

Received 2-19-93

or (C.R.)

LESLIE H. GEESLIN
REGISTERED SURVEYOR NO 5248
P. O. BOX 274
RUSHSYLVANIA, OHIO 43347

TELEPHONE: (513) 468-2793

VILLAGE OF DEGRAFF SURVEY

February 19, 1993



Leslie H. Geeslin

The following described real estate situated in the State of Ohio, County of Logan, Township of Pleasant, being part of Section 7, Town 2, Range 14, B. M. R. S. in the Village of DeGraff and more particularly described as follows:

Beginning at a concrete post found in the south line of Nevin F. Hirschfeld's 40.66 acre tract as described in O. R. Vol. 10 page 238 at the northwest corner of Greenwood Cemetery's 18.5 acre tract as described in D. B. Vol. 123 Page 385.

Thence with the west line of said Cemetery S. 00° 39' 49" W. 405.81 feet to a 5/8 inch iron bar found.

Thence with said Cemetery's west line S. 00° 18' 50" E. 928.34 feet to a 5/8 inch iron bar found at the northeast corner of the Village of DeGraff's 4.95 acre tract as described in D. B. Vol. 353 Page 973.

Thence with the north line of said 4.95 acre tract S. 88° 01' 12" W. 165.42 feet to a 5/8 inch iron bar set.

Thence N. 00° 01' 15" W. 1338.65 feet to a 5/8 inch iron bar set in the south line of said Hirschfeld's 40.66 acre tract.

Thence with said Hirschfeld's south line N. 89° 35' 39" E. 165.41 feet to the place of beginning.

Containing 5.000 acres more or less.

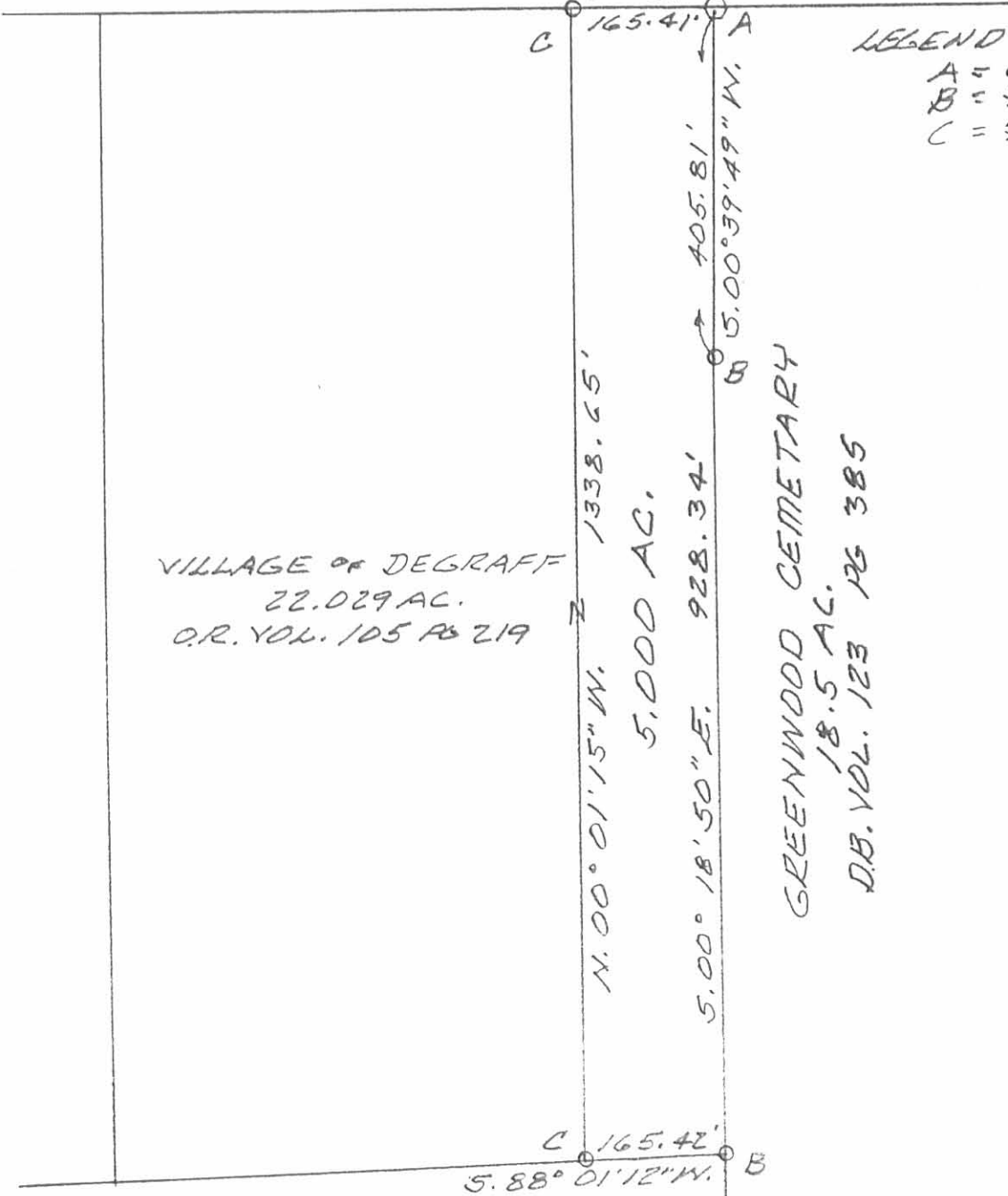
The above described 5.000 acre tract being on the east side of the Village of DeGraff's 22.029 acre tract as described in O. R. Vol. 105 Page 219.

Bearings are based on an assumed bearing (S. 00° 39' 49" W.) for the west line of the Cemetery in this field survey by Leslie H. Geeslin.

INDEXED ON MAP
95/1D

Nevin F. Hirschfeld
 O.R. VOL. 10 PG 238
 40.66 AC. N. 89° 35' 39" E.

LEGEND:
 A = CONCRETE COR. POST
 B = 5/8" IRON BAR F.D.
 C = 5/8" IRON BAR SET



VILLAGE OF DEGRAFF
 22.029 AC.
 O.R. VOL. 105 PG 219

GREENWOOD CEMETARY
 18.5 AC.
 D.B. VOL. 123 PG 385



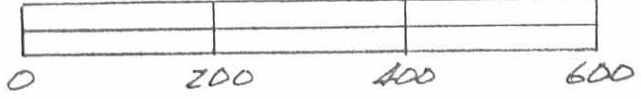
VILLAGE OF DEGRAFF
 4.95 AC.
 D.B. VOL. 353 PG 973

SURVEY OF 5.000 AC. TRACT
 IN SEC. 7, TOWN 2, RANGE 14,
 B.M.R.S., PLEASANT TWP., LOGAN
 COUNTY, OHIO IN THE VILLAGE OF
 DEGRAFF.
 FEBRUARY 19, 1993
 SCALE: 1" = 200'



Leslie H. Geeslin
 LESLIE H. GEESLIN
 RUSHSVLVANIA, OHIO
 PH 513-468-2793

INDEXED ON MAP
 951 IP



(951) 2P

Corporation survey
DeGraff

