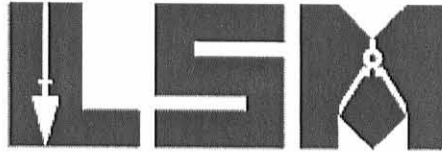


Rec'd 2-22-12 8M/AC

Lee Surveying and Mapping Co., Inc.

Land Surveys • Topography • Subdivisions • Construction Layout

117 N. Madriver St.
Bellefontaine OH 43311



Phone: (937) 593-7335
Fax: (937) 593-7444
surveys@lsmcinc.us

RAMSEY 5.158 ACRES

Lying in Virginia Military Survey 10060, Bokescreek Township, Logan County, Ohio.

Being out of the Darrell W. Ramsey and Beverly Ramsey 41.67 acre tract as deeded and described in Official Record 235, Page 939, Tract I of the Logan County Records of Deeds and being more particularly described as follows:

Commencing on a 5/8 inch iron rod found on the northwest corner of Virginia Military Survey 10060 and on the intersection of the center-lines on Ohio Route 292 and County Highway 117.

THENCE, with the north line of Virginia Military Survey 10060 and the center-line of County Highway 117 (60 feet wide), N 83°-35'-07"E, a distance of 2649.00 feet to a MAG nail set at the TRUE POINT OF BEGINNING.

THENCE, with the north line of Virginia Military Survey 10060 and the center-line of County Highway 117, N 83°-35'-07"E, a distance of 180.00 feet to a MAG nail set.

THENCE, S 05°-55'-35"E, a distance of 804.50 feet to a 5/8 inch iron rod set, passing a 5/8 inch iron rod set at 30.01 feet.

THENCE, S 49°-00'-45"E, a distance of 49.28 feet to a 5/8 inch iron rod set.

THENCE, S 05°-55'-36"E, a distance of 353.51 feet to a 5/8 inch iron rod set.

THENCE, N 88°-37'-15"W, a distance of 216.00 feet to a 5/8 inch iron rod set.

THENCE, N 05°-53'-51"W, a distance of 1165.00 feet to the point of beginning, passing a 5/8 inch iron rod set at 1134.99 feet.

Containing 5.158 acres, of which 0.124 acre is within the highway right-of-way.

Property is subject to any and all previous easements and rights-of-way of record.

The basis for bearings is the north line of Virginia Military Survey 10060, being N 83°-35'-07"E, and all other bearings are from angles and distances measured in a field survey by Lee Surveying and Mapping Co., Inc. on February 13, 2012, revised February 20, 2012.



Description prepared by:

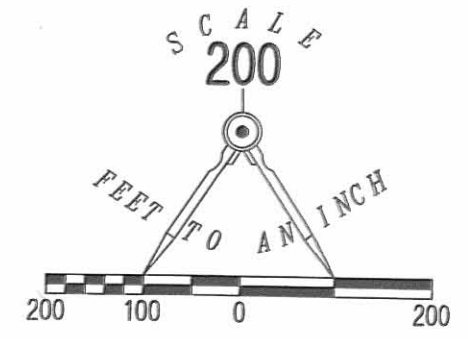
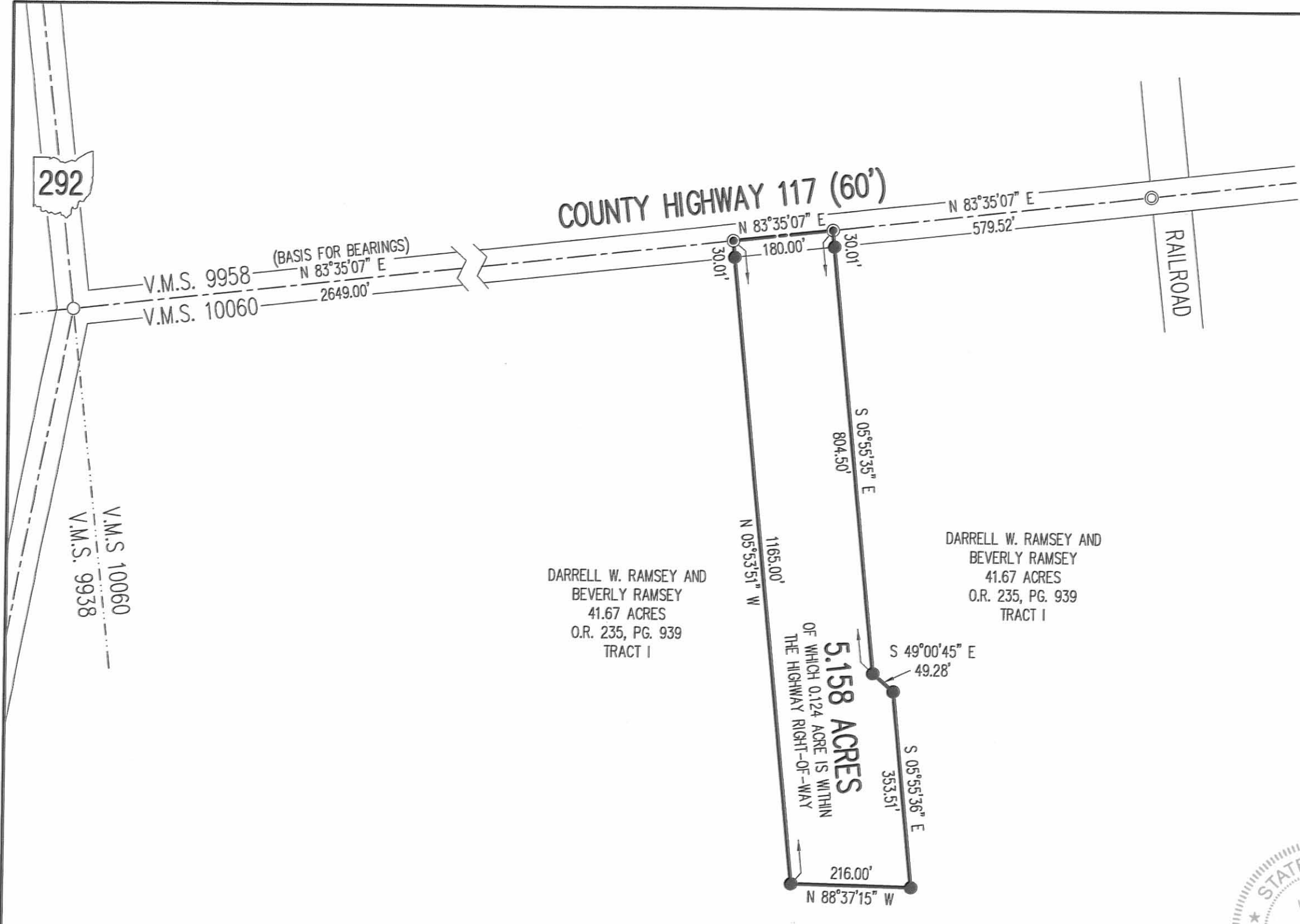
A handwritten signature in cursive script that reads 'William K. Bruce'.

William K. Bruce
Professional Surveyor 7437
February 20, 2012

52680212REV

INDEXED ON MAP
9045 1D

REC'D 2-22-12 SMY OK



- LEGEND:
- 5/8 INCH IRON ROD FOUND
 - ⊙ MAG NAIL FOUND
 - MAG NAIL SET
 - 5/8 INCH IRON ROD SET WITH PLASTIC I.D. CAP STAMPED "LSM 7437"

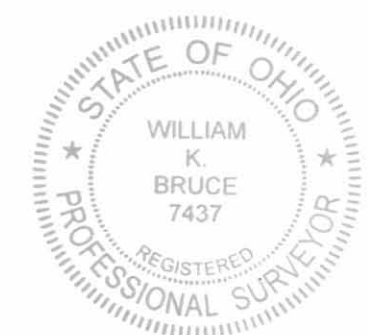
**SURVEY OF 5.158 ACRES OUT OF THE
 DARRELL W. RAMSEY AND
 BEVERLY RAMSEY
 41.67 ACRE TRACT
 OFFICIAL RECORD 235, PAGE 939
 TRACT I
 VIRGINIA MILITARY SURVEY 10060
 BOKESCREEK TOWNSHIP
 LOGAN COUNTY, OHIO**

DARRELL W. RAMSEY AND
 BEVERLY RAMSEY
 41.67 ACRES
 O.R. 235, PG. 939
 TRACT I

DARRELL W. RAMSEY AND
 BEVERLY RAMSEY
 41.67 ACRES
 O.R. 235, PG. 939
 TRACT I

5.158 ACRES
 OF WHICH 0.124 ACRE IS WITHIN
 THE HIGHWAY RIGHT-OF-WAY

SURVEYED BY:
William K. Bruce
 WILLIAM K. BRUCE
 PROFESSIONAL SURVEYOR 7437
 FEBRUARY 13, 2012
 REVISED FEBRUARY 20, 2012 (CLIENT REQUEST)



ORIGINAL STAMP IN GREEN

COPYRIGHT 2012 BY:
LEE SURVEYING & MAPPING CO., INC.
 117 North Madriver Street
 BELLEFONTAINE, OHIO 43311
 (937) 593-7335
 WWW.LSMINC.US
 surveys@lsminc.us
 KSS D0212 52680212REV L-5268-3

2 WORKING DAYS
BEFORE YOU DIG
 CALL TOLL FREE **800-362-2764**
 OHIO UTILITIES PROTECTION SERVICE

INDEXED ON MAP
 9645 IP