

REC'D 4-7-08 SMY OK

# Lee Surveying and Mapping Co., Inc.

Land Surveys • Topography • Subdivisions • Construction Layout

117 N. Madriver St.  
Bellefontaine OH 43311



Phone: (937) 593-7335  
Fax: (937) 593-7444

## CARPENTER 23.801 ACRES

Lying in Virginia Military Survey 9891, Bokescreek Township, Logan County, Ohio.

Being all of the Richard F. Carpenter or Jeanne K. Carpenter, Trustees or their Successor(s) as Trustees of the Carpenter Family Trust, Dated March 22, 2000, 17.1 acre tract and 6.7 acre tract as deeded and described in Official Record 457, Page 576, Tract I of the Logan County Records of Deeds and being more particularly described as follows:

Beginning on a 1 inch square iron bolt found in a monument box on the east line of Virginia Military Survey 9891 at the intersection of County Highway 119 and County Highway 120 at center-line Station 33+38.15 (Logan County Engineer's Field Book 701, Page 74).

THENCE, with the east line of Virginia Military Survey 9891 and the center-line of County Highway 120 (60 feet wide), S 8°-03'-13"E, a distance of 1691.00 feet to a railroad spike set at center-line Station 16+47.2 (Logan County Engineer's Field Book 701, Page 74).

THENCE, with the north line of the Bernard W. Bates 5 acre tract (Vol. 262, Pg. 542, Fourth Tract), S 82°-20'-45"W, a distance of 613.80 feet to a stone found, passing a 5/8 inch iron rod set at 28.13 feet.

THENCE, with the east line of the Bernard W. Bates 1.2 acre tract (Vol. 262, Pg. 542, Second Tract), N 8°-03'-15"W, a distance of 1687.30 feet to a railroad spike set on the center-line of County Highway 119, passing a 5/8 inch iron rod set at 1657.30 feet.

THENCE, with the center-line of County Highway 119 (60 feet wide), N 82°-00'-00"E, a distance of 613.80 feet to the point of beginning.

Containing 23.801 acres, of which 1.566 acres are within the highway rights-of-way.

The basis for bearings is the center-line of County Highway 119, being N 82°-00'-00"E, and all other bearings are from angles and distances measured in a field survey by Lee Surveying and Mapping Co., Inc. on April 3, 2008.

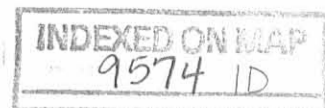


ORIGINAL STAMP IN GREEN

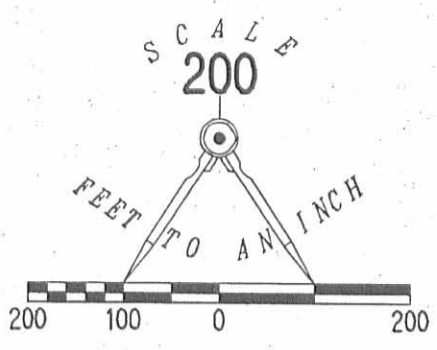
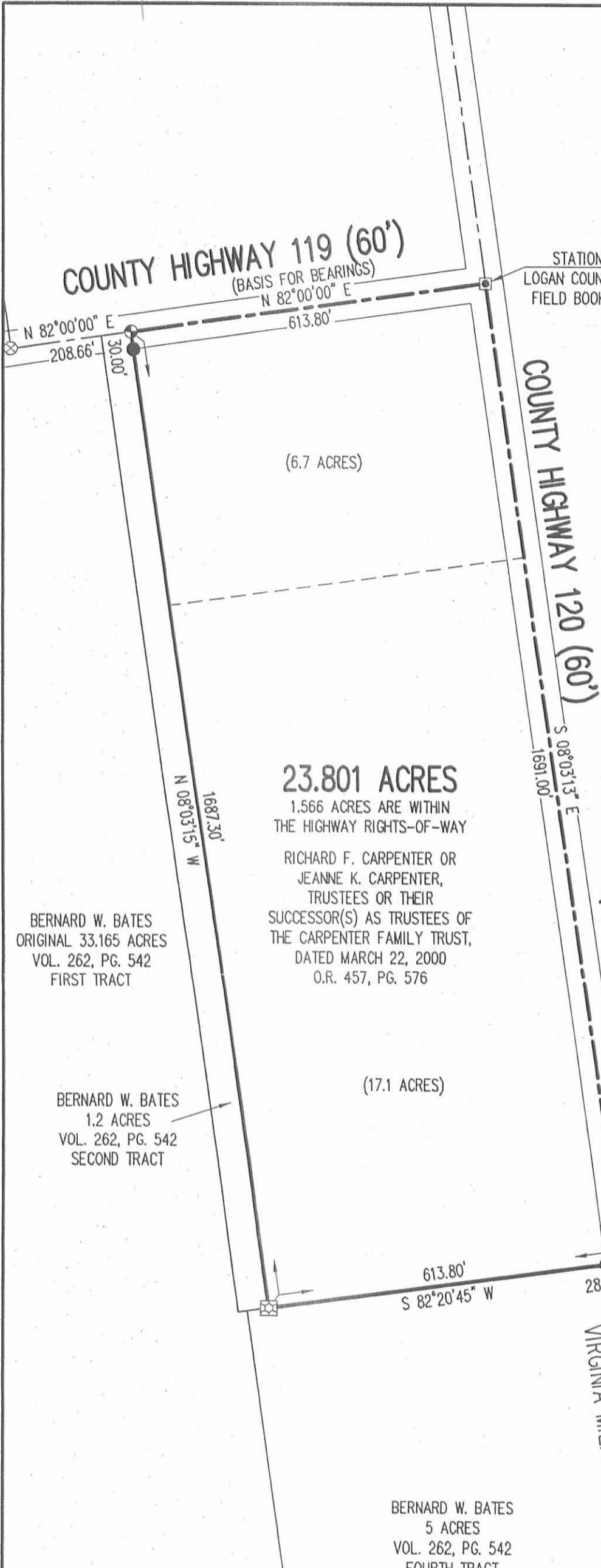
Description prepared by:

William K. Bruce  
Professional Surveyor 7437  
April 4, 2008

4606038



REV'D 4-7-08 S.M.Y. BK



- LEGEND:
- ⊗ 3 INCH DIAMETER PIPE FOUND IN MONUMENT BOX
  - ⊠ 1 INCH SQUARE IRON BOLT FOUND IN MONUMENT BOX
  - ⊕ RAILROAD SPIKE SET
  - ⊗ RAILROAD SPIKE FOUND
  - ⊠ STONE FOUND
  - 5/8 INCH IRON ROD SET

**SURVEY OF THE**  
**RICHARD F. CARPENTER OR**  
**JEANNE K. CARPENTER,**  
**TRUSTEES OR THEIR**  
**SUCCESSOR(S) AS TRUSTEES OF**  
**THE CARPENTER FAMILY TRUST,**  
**DATED MARCH 22, 2000**  
**17.1 ACRE TRACT AND 6.7 ACRE TRACT**  
**OFFICIAL RECORD 457, PAGE 576**  
**TRACT I**  
**VIRGINIA MILITARY SURVEY 9891**  
**BOKESCREEK TOWNSHIP**  
**LOGAN COUNTY, OHIO**

BERNARD W. BATES  
ORIGINAL 33.165 ACRES  
VOL. 262, PG. 542  
FIRST TRACT

**23.801 ACRES**  
1.566 ACRES ARE WITHIN  
THE HIGHWAY RIGHTS-OF-WAY  
RICHARD F. CARPENTER OR  
JEANNE K. CARPENTER,  
TRUSTEES OR THEIR  
SUCCESSOR(S) AS TRUSTEES OF  
THE CARPENTER FAMILY TRUST,  
DATED MARCH 22, 2000  
O.R. 457, PG. 576

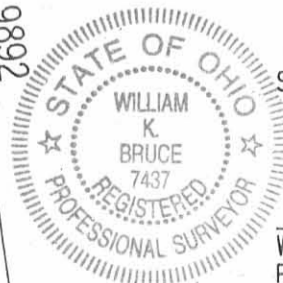
BERNARD W. BATES  
1.2 ACRES  
VOL. 262, PG. 542  
SECOND TRACT

(17.1 ACRES)

BERNARD W. BATES  
5 ACRES  
VOL. 262, PG. 542  
FOURTH TRACT

STATION 16+47.2  
LOGAN COUNTY ENGINEER'S  
FIELD BOOK 701, PG. 74

STATION 0+00  
LOGAN COUNTY ENGINEER'S  
FIELD BOOK 701, PG. 74



SURVEYED BY:  
*William K. Bruce*  
WILLIAM K. BRUCE  
PROFESSIONAL SURVEYOR 7437  
APRIL 3, 2008

COPYRIGHT 2008 BY:  
**LEE SURVEYING & MAPPING CO., INC.**  
117 North Madriver Street  
BELLEFONTAINE, OHIO 43311  
(937) 593-7335

2 WORKING DAYS  
**BEFORE YOU DIG**  
CALL TOLL FREE **800-362-2764**  
OHIO UTILITIES PROTECTION SERVICE.

**C.H. 26**

V.M.S. 7995

KSS D0408 4606038 L-4606-3

INDEXED ON MAP  
9574 1P