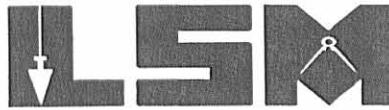


REC'D 11-22-04 SVM OK

Lee Surveying and Mapping Co., Inc.

Land Surveys • Topography • Subdivisions • Construction Layout



117 N. Madriver St.
Bellefontaine OH 43311

Phone: (937) 593-7335
Fax: (937) 593-7444

CHERRY 3.000 ACRES

Lying in Virginia Military Surveys 775-6155, Bokescreek Township, Logan County, Ohio.

Being out of the Louis M. Cherry and Geraldine Cherry 64.70 acre tract as deeded and described in Official Record 307, Page 281, Tract IV of the Logan County Records of Deeds and being more particularly described as follows:

Beginning at a 1/2 inch iron rod found on the intersection of centerlines of County Highway 125 and Ohio Route 47.

THENCE, with the center-line of County Highway 125 (60 feet wide), N 11°-30'-00"E, a distance of 1039.64 feet to a railroad spike set at the TRUE POINT OF BEGINNING, passing a 1/2 inch iron rod found at the southwest corner of the said 64.70 acre tract at 889.64 feet.

THENCE, with the center-line of County Highway 125, N 11°-30'-00"E, a distance of 358.12 feet to a railroad spike set.

THENCE, S 78°-20'-34"E, a distance of 364.91 feet to a 5/8 inch iron rod set, passing a 5/8 inch iron rod set at 30.00 feet.

THENCE, S 11°-30'-00"W, a distance of 358.12 feet to a 5/8 inch iron rod set.

THENCE, N 78°-20'-34"W, a distance of 364.91 feet to the point of beginning, passing a 5/8 inch iron rod set at 334.91 feet

Containing 3.000 acres, of which 0.247 acre is within the highway right-of-way.

The basis for bearings is the center-line of County Highway 125, being N 11°-30'-00"E, and all other bearings are from angles and distances measured in a field survey by Lee Surveying and Mapping Co., Inc. on November 19, 2004.

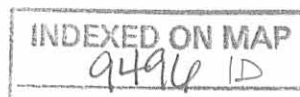


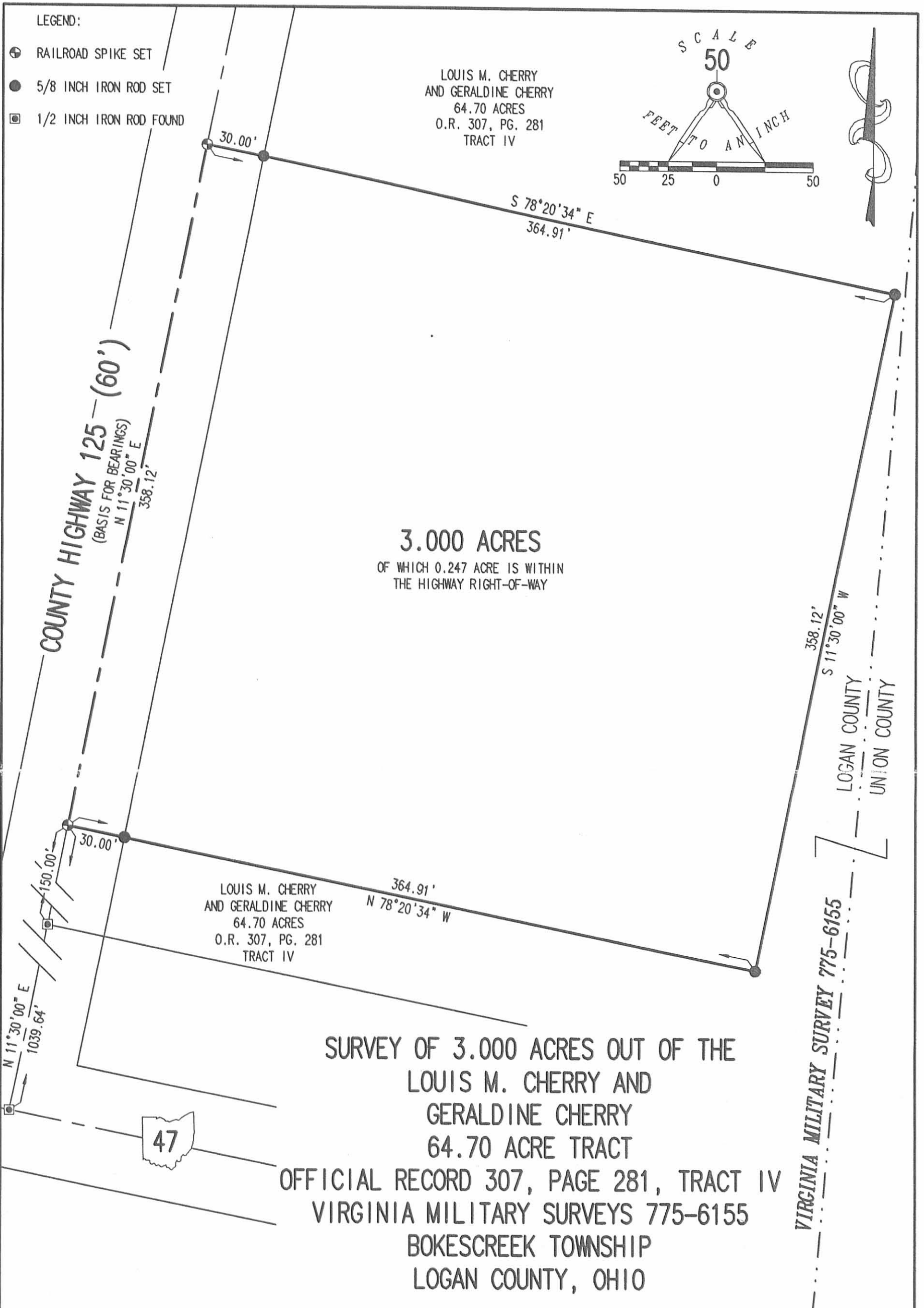
ORIGINAL STAMP IN GREEN

Description prepared by:

[Signature]
Jeffrey I. Lee
Professional Surveyor 6359
November 19, 2004

L-3934





INDEXED ON MAP
9496 IP

2 WORKING DAYS
BEFORE YOU DIG
CALL TOLL FREE **800-362-2764**
OHIO UTILITIES PROTECTION SERVICE.



ORIGINAL STAMP IN GREEN

SURVEYED BY:

Jeffrey I. Lee
JEFFREY I. LEE
PROFESSIONAL SURVEYOR 6359
NOVEMBER 19, 2004

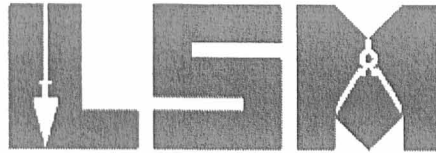
COPYRIGHT 2004 BY:
LEE SURVEYING & MAPPING CO., INC
117 North Madriver Street
BELLEFONTAINE, OHIO 43311
(937) 593-7335
KSR D413 3934104 L-3934-3

REC'D 1-22-09 SMY/OK

Lee Surveying and Mapping Co., Inc.

Land Surveys • Topography • Subdivisions • Construction Layout

117 N. Madriver St.
Bellefontaine OH 43311



Phone: (937) 593-7335
Fax: (937) 593-7444

CHERRY 61.995 ACRES

Lying in Virginia Military Surveys 775-6155 and 6154, Bokescreek Township, Logan County and York Township, Union County, Ohio.

Being all of the Louis M. Cherry and Geraldine Cherry 0.08 acre tract, 0.50 acre tract and the remainder of the 64.70 acre tract as deeded and described in Official Record 307, Page 281, Tract II, Tract III, Parcel 2 and Tract IV of the Logan County Records of Deeds and Official Record 62, Page 20, Tract II, Tract III, Parcel 2 and Tract IV of the Union County Records of Deeds and being more particularly described as follows:

Commencing on a railroad spike found on the intersection of the center-lines of Ohio Route 47 and Logan County Highway 125.

THENCE, with the center-line of Logan County Highway 125 (60 feet wide), N 11°-30'-00"E, a distance of 889.25 feet to a 1/2 inch iron rod found at the TRUE POINT OF BEGINNING.

THENCE, with the center-line of Logan County Highway 125, N 11°-30'-00"E, a distance of 150.00 feet to a railroad spike found.

THENCE, with the lines of the Dino Deleon 3.000 acre tract (O.R. 752, Pg. 803), the following three courses:

S 78°-20'-34"E, a distance of 364.92 feet to a 5/8 inch iron rod found, passing a 5/8 inch iron rod found at 30.00 feet.

N 11°-29'-48"E, a distance of 358.12 feet to a 5/8 inch iron rod found.

N 78°-20'-34"W, a distance of 364.90 feet to a railroad spike found on the center-line of Logan County Highway 125, passing a 5/8 inch iron rod found at 334.90 feet.

THENCE, with the center-line of Logan County Highway 125, N 11°-30'-00"E, a distance of 966.92 feet to a 3/4 inch iron rod found on the north line of Virginia Military Survey 775-6155 at angle point Station 23+64.40 (Logan County Engineer's Field Book 708, Page 47), passing a 3/4 inch iron rod found at 950.42 feet.

THENCE, with the center-line of Logan County Highway 125, N 10°-22'-27"E, entering into Virginia Military Survey 6154, a distance of 16.50 feet to a railroad spike set.

THENCE, within the Carroll R. Eastman and Anna Mae Eastman 29.63 acre tract (O.R. 588, Pg. 22, Tract I-Logan County, O.R. 379, Pg. 312, Tract I-Union County), S 78°-43'-17"E, passing over the Logan County/Union County line, a distance of 708.08 to a 5/8 inch iron rod set, passing a 5/8 inch iron rod set at 30.00 feet.

THENCE, with the west line of the Louis M. Cherry and Geraldine Cherry 54 acre tract (O.R. 62, Pg. 20, Tract III, Parcel 1), S 10°-00'-00"W, a distance of 16.50 feet to a 5/8 inch iron rod set on the north line of Virginia Military Survey 775-6155.

THENCE, with the north line of Virginia Military Survey 775-6155 and the south line of the said 54 acre tract, S 78°-43'-17"E, a distance of 1241.44 feet to a stone found at the northeast corner of Virginia Military Survey 775-6155.

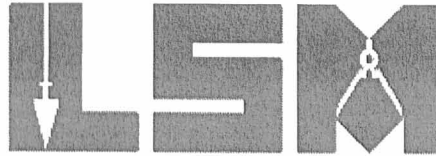
THENCE, with the east line of Virginia Military Survey 775-6155 and the west lines of the Sharon L. Beck 69.25 acre tract (O.R. 317, Pg. 286), the Constance D. Lawrence 44.46-1/2 acre tract (O.R. 343, Pg. 863-ref. Vol. 317, Pg. 194) and the Carol Jane Mohler, Trustee of the Carol Jane Mohler Trust 72.75 acre tract (O.R. 553, Pg. 286-Logan County, O.R. 344, Pg. 450-Union County) and John E. Potts, Trustee of the John

INDEXED ON MAP
9496 2D-1

Lee Surveying and Mapping Co., Inc.

Land Surveys • Topography • Subdivisions • Construction Layout

117 N. Madriver St.
Bellefontaine OH 43311



Phone: (937) 593-7335
Fax: (937) 593-7444

E. Potts Trust 72.75 acre tract (O.R. 553, Pg. 284-Logan County, O.R. 344, Pg. 453-Union County), S 12°-50'-10"W, a distance of 1443.29 feet to a stone found.

THENCE, with the north line of the said 72.75 acre tract, N 79°-41'-10"W, passing over the Union County/Logan County line a distance of 1916.37 feet to the point of beginning, passing a 5/8 inch iron rod set at 1886.36 feet.

Containing 61.995 acres, of which 0.780 acre is within the highway right-of-way. There are 8.768 acres in Logan County and 53.227 acres in Union County. There is 0.268 acre in Virginia Military Survey 6154 and 61.727 acres in Virginia Military Survey 775-6155.

The basis for bearings is the center-line of Logan County Highway 125 from the intersection of Ohio Route 47 to Station 23+64.40, being N 11°-30'-00"E, and all other bearings are from angles and distances measured in a field survey by Lee Surveying and Mapping Co., Inc. on December 30, 2008.



ORIGINAL STAMP IN GREEN

Description prepared by:

A handwritten signature in cursive script that reads 'William K. Bruce'.

William K. Bruce
Professional Surveyor 7437
January 8, 2009

3934128



1 RECID 1-22-09 SMM/AL

Lee Surveying and Mapping Co., Inc.

Land Surveys • Topography • Subdivisions • Construction Layout

117 N. Madriver St.
Bellefontaine OH 43311



Phone: (937) 593-7335
Fax: (937) 593-7444

CHERRY-VS-EASTMAN OVERLAP 0.268 ACRE

Lying in Virginia Military Survey 6154, Bokescreek Township, Logan County and York Township, Union County, Ohio.

Being part of the Louis M. Cherry and Geraldine Cherry 0.50 acre tract as deeded and described in Official Record 307, Page 281, Tract III, Parcel 2 of the Logan County Records of Deeds and Official Record 62, Page 20, Tract III, Parcel 2 of the Union County Records of Deeds and part of the Carroll R. Eastman and Anna Mae Eastman 29.63 acre tract as deeded and described in Official Record 588, Page 22, Tract I of the Logan County Records of Deeds and Official Record 379, Page 312, Tract I of the Union County Records of Deeds and being more particularly described as follows:

Beginning on a 3/4 inch iron rod found on the north line of Virginia Military Survey 775-6155 and the south line of Virginia Military Survey 6154 on the center-line of Logan County Highway 125 at angle point Station 23+64.40 (Logan County Engineer's Field Book 708, Page 47).

THENCE, with the center-line of Logan County Highway 125 (60 feet wide), N 10°-22'-27"E, a distance of 16.50 feet to a railroad spike set.

THENCE, within the said 29.63 acre tract and the north line of the said 0.50 acre tract, S 78°-43'-17"E, passing over the Logan County/Union County line, a distance of 708.08 to a 5/8 inch iron rod set, passing a 5/8 inch iron rod set at 30.00 feet.

THENCE, with the west line of the Louis M. Cherry and Geraldine Cherry 54 acre tract (O.R. 62, Pg. 20, Tract III, Parcel 1), S 10°-00'-00"W, a distance of 16.50 feet to a 5/8 inch iron rod set on the north line of Virginia Military Survey 775-6155 and the south line of Virginia Military Survey 6154.

THENCE, with the north line of Virginia Military Survey 775-6155 and the south line of Virginia Military Survey 6154, within the said 0.50 acre tract and the south line of the said 29.63 acre tract, N 78°-43'-17"W, passing over the Union County/Logan County line, a distance of 708.19 feet to the point of beginning.

Containing 0.268 acre, of which 0.011 acre is within the highway right-of-way. There is 0.099 acre in Logan County and 0.169 acre in Union County.

The basis for bearings is the center-line of County Highway 125 from the intersection of Ohio Route 47 to Station 23+64.40, being N 11°-30'-00"E, and all other bearings are from angles and distances measured in a field survey by Lee Surveying and Mapping Co., Inc. on December 30, 2008.



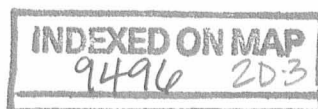
ORIGINAL STAMP IN GREEN

Description prepared by:

William K. Bruce

William K. Bruce
Professional Surveyor 7437
January 13, 2009

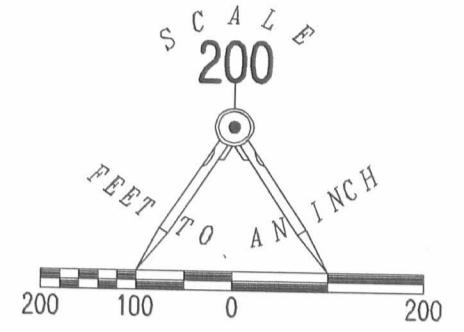
3934128



FLOOD ZONE NOTE:

BY GRAPHIC PLOTTING ONLY, THE AREA IN UNION COUNTY SHOWN IS IN FLOOD ZONE "X", AREAS DETERMINED TO BE OUTSIDE 500-YEAR FLOOD PLAIN, PER THE FLOOD INSURANCE RATE MAP (FIRM) PANEL NUMBER 39159C 0125 D WITH AN EFFECTIVE DATE OF DECEMBER 16, 2008.

NO FIELD SURVEYING WAS PERFORMED TO DETERMINE THESE ZONES AND AN ELEVATION CERTIFICATE MAY BE NEEDED TO VERIFY THIS DETERMINATION OR TO APPLY FOR A VARIANCE FROM THE FEDERAL EMERGENCY MANAGEMENT AGENCY.



- LEGEND:
- ⊗ RAILROAD SPIKE FOUND
 - ⊙ 1/2 INCH IRON ROD FOUND
 - 5/8 INCH IRON ROD FOUND
 - ⊕ 3/4 INCH IRON ROD FOUND
 - ⊕ RAILROAD SPIKE SET
 - 5/8 INCH IRON ROD SET
 - ⊞ STONE FOUND

SHARON L. BECK
69.25 ACRES
O.R. 317, PG. 286

CONSTANCE D. LAWRENCE
44.46-1/2 ACRES
O.R. 343, PG. 863
(REF VOL. 317, PG. 194)

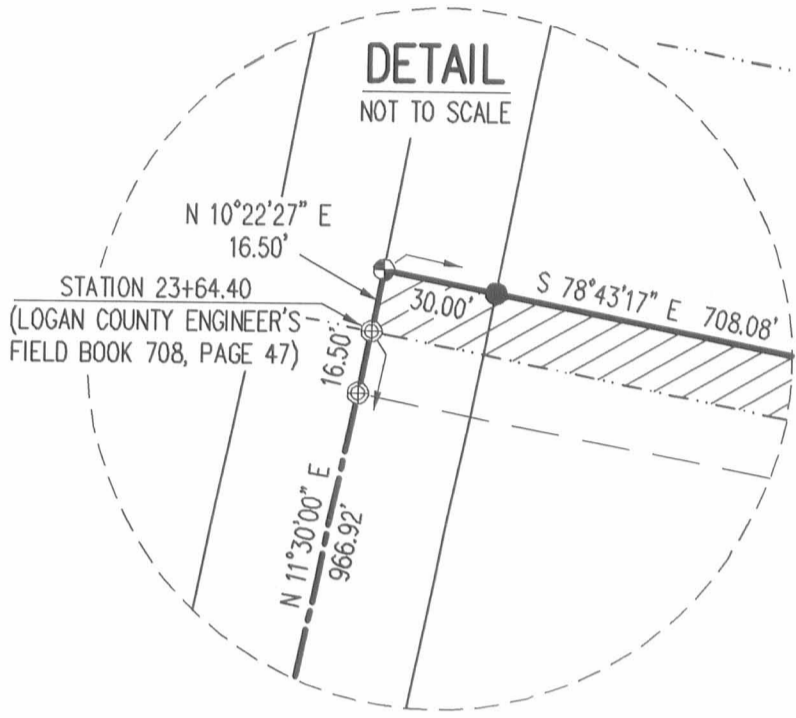
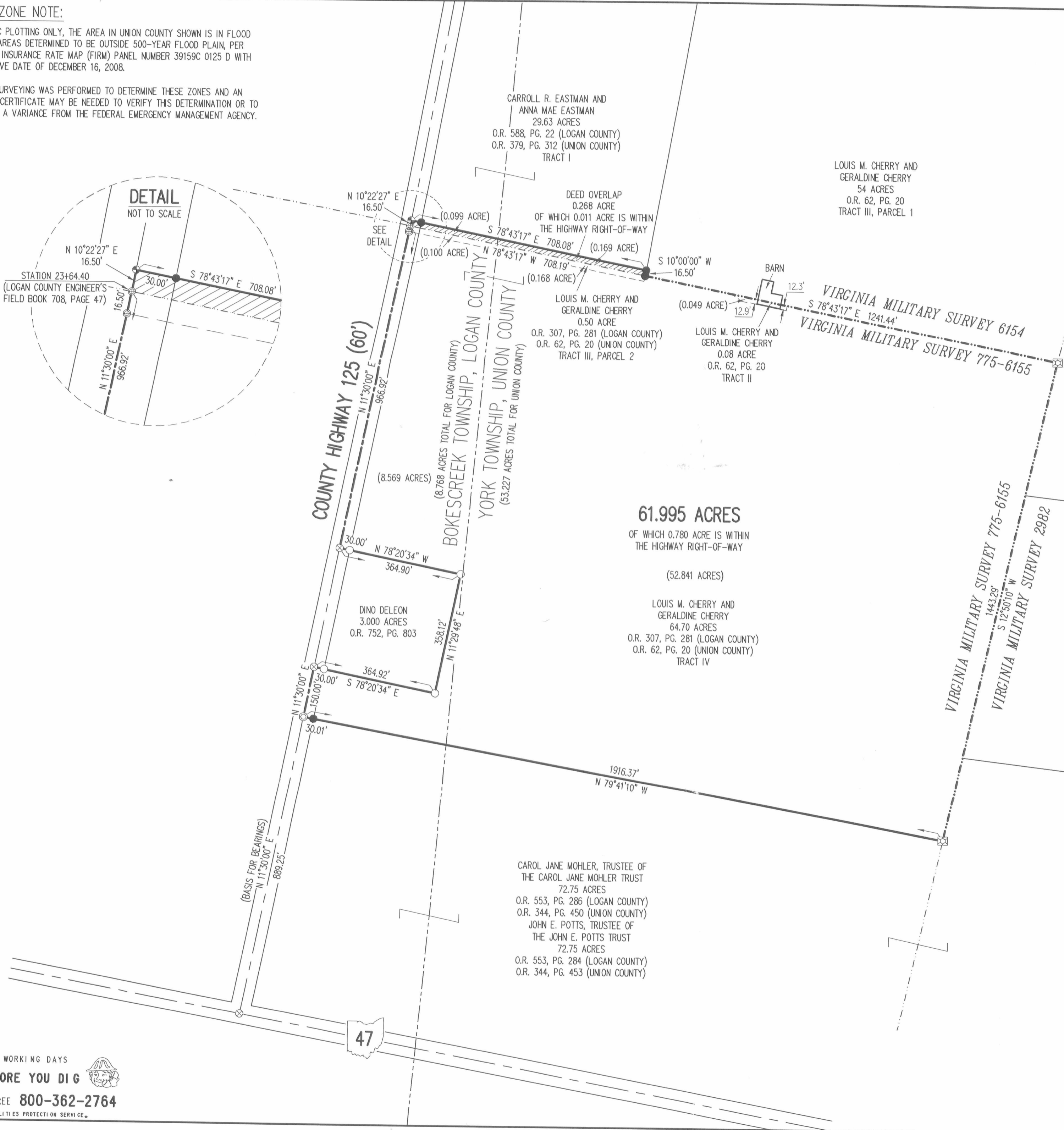
RETRACEMENT SURVEY OF THE
LOUIS M. CHERRY AND
GERALDINE CHERRY
0.08 ACRE TRACT, 0.50 ACRE TRACT
AND 64.70 ACRE TRACT
OFFICIAL RECORD 307, PAGE 281 (LOGAN COUNTY)
OFFICIAL RECORD 62, PAGE 20 (UNION COUNTY)
TRACT II, TRACT III, PARCEL 2
AND TRACT IV
VIRGINIA MILITARY SURVEYS 775-6155 AND 6154
BOKESCREEK TOWNSHIP, LOGAN COUNTY
YORK TOWNSHIP, UNION COUNTY
OHIO

SURVEYED BY:

William K. Bruce
WILLIAM K. BRUCE
PROFESSIONAL SURVEYOR 7437
DECEMBER 30, 2008



COPYRIGHT 2009 BY:
LEE SURVEYING & MAPPING CO., INC.
117 North Madriver Street
BELLEFONTAIN, OHIO 43311
(937) 593-7335
surveys@lsmcinc.us
KSS D1208 3934128 L-3934-2



61.995 ACRES
OF WHICH 0.780 ACRE IS WITHIN THE HIGHWAY RIGHT-OF-WAY
(52.841 ACRES)

LOUIS M. CHERRY AND GERALDINE CHERRY
64.70 ACRES
O.R. 307, PG. 281 (LOGAN COUNTY)
O.R. 62, PG. 20 (UNION COUNTY)
TRACT IV

CAROL JANE MOHLER, TRUSTEE OF THE CAROL JANE MOHLER TRUST
72.75 ACRES
O.R. 553, PG. 286 (LOGAN COUNTY)
O.R. 344, PG. 450 (UNION COUNTY)
JOHN E. POTTS, TRUSTEE OF THE JOHN E. POTTS TRUST
72.75 ACRES
O.R. 553, PG. 284 (LOGAN COUNTY)
O.R. 344, PG. 453 (UNION COUNTY)