

Received 7-15-98 ML ✓

LESLIE H. GEESLIN

REGISTERED SURVEYOR 5248

P. O. BOX 274

RUSHSVLVANIA, OHIO 43347

TELEPHONE: (937) 468-2793

FAX: (937) 468-2082

RAMSEY SURVEY

July 15, 1998

The following described real estate situated in the State of Ohio, County of Logan, Township of Bokescreek, being part of Virginia Military Survey 9938 and more particularly described as follows:

Beginning at a railroad spike found in the centerline of County Highway 50 in the west line of V. M. S. 9938 at the northeast corner of the remainder of Henry Corwin's 150 acre tract as described in D. B. Vol. 47 Page 448.

Thence with the centerline of said C. H. 50 N. 64° 27' 41" E. 85.91 feet to a magnetic nail set

Thence S. 4° 09' 40" E. 830.85 feet to a 5/8 inch iron bar set, passing a 5/8 inch iron bar set at 32.22 feet.

Thence S. 85° 11' 55" E. 290.38 feet to a 5/8 inch iron bar set.

Thence S. 87° 53' 21" E. 375.16 feet to a feet to a 5/8 inch iron bar set.

Thence S. 2° 50' 10" E. 163.05 feet to a 5/8 inch iron bar set.

Thence S. 89° 32' 55" W. 189.38 feet to a 5/8 inch iron bar set.

Thence N. 3° 47' 32" W. 141.66 feet to a 5/8 inch iron bar set.

Thence N. 87° 53' 21" W. 185.46 feet to a feet to a 5/8 inch iron bar set.

Thence N. 85° 11' 55" W. 368.05 feet to a 5/8 inch iron bar set in the west line of V. M. S. 9938.

Thence with said V. M. S. line (the east line of Robert C. Fredrick's 100 acre tract as described in D. B. Vol. 384 Page 251 and the east line of said Corwin tract) N. 4° 09' 40" W. 817.26 feet to the place of beginning, passing 5/8 inch iron bars set at 76.55 feet and 785.04 feet.

Containing 2.599 acres more or less, of which 0.059 acre is in the right of way of C. H. 50.

The above described 2.599 acre tract being all of Newton W. Ramsey etux's 0.275 acre tract (Tract 3), 1.101 acre from his 3.42 acre tract (Tract 5) and 1.223 acre from his 76.5 acre tract (Tract 2) as all are described in D. B. Vol. 379 Page 381.

Bearings are based on an assumed bearing (N. 64° 27' 41" E.) for the centerline of C. H. 50 in this field survey by Leslie H. Geeslin, Reg. Surveyor # 5248, on July 15, 1998.



INDEXED ON MAP
9201 1D

Leslie H. Geeslin

V.M.S. 9937
 3340.26'
 V.M.S. 9938

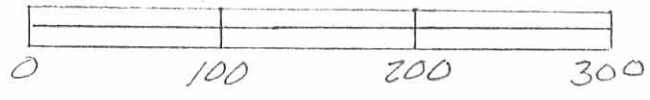
17.72'
 N. 4° 09' 40" W.

N. 64° 27' 41" E.
 COUNTY HWY. 50 (60')

HENRY CORWIN
 150 AC. (REMAINDER)
 D.B. VOL. 47 PG 448

NEWTON W. RAMSEY ETUX
 60 AC. (TR. 4)
 D.B. VOL. 379 PG 381

SURVEY OF 2.599 AC. TRACT IN
 V.M.S. 9938, BOKESCREEK
 TOWNSHIP, LOGAN COUNTY, OHIO
 FOR NEWT RAMSEY.
 JULY 15, 1998
 SCALE: 1"=100'



817.26'
 830.85'
 N. 4° 09' 40" W.
 0.275 AC. (TR. 3) (1.101 A)
 S. 4° 09' 40" E.
 3.42 AC. (TR. 5)

76.55'
 76.5 AC. (TR. 2)
 S. 85° 11' 55" E. 290.38'
 N. 85° 11' 55" W. 368.05'
 S. 87° 53' 21" E. 375.16'
 N. 87° 53' 21" W. 185.46'
 N. 3° 47' 32" W. 141.66'
 189.38'
 S. 89° 32' 55" W.
 163.05'
 5.2° 50' 10" E.

ROBERT C. FREDERICK
 100 AC.
 D.B. VOL. 384 PG 251

LEGEND:
 ○ = 8" WOOD POST IN CONCRETE FD.
 △ = P.R. SPIKE FD.
 ○ = MAGNETIC NAIL SET
 ○ = 5/8" IRON BAR SET

(1223 A)
 2.599 AC.



INDEXED ON MAP
 9201 IP

LESLIE H. GEESLIN
 RUSHLYNIA, OH
 PH 937-468-2793

REC'D 3-8-99 SMJ AK ✓

LESLIE H. GEESLIN

REGISTERED SURVEYOR 5248

P. O. BOX 274

RUSHSVLVANIA, OHIO 43347

TELEPHONE: (937) 468-2793

FAX: (937) 468-2080

RAMSEY EASEMENT

March 2, 1999

The following described centerline of a 15 foot ingress and egress easement situated in the State of Ohio, County of Logan, Township of Bokescreek, being part of Virginia Military Survey 9938 and more particularly described as follows:

Beginning at a point in the centerline of County Highway 50 that is N. 64° 27' 41" E. 8.05 feet from a R. R. spike found at the northeast corner of the remainder of Henry Corwin's 150 acre tract as described in D. B. Vol. 47 Page 448 and the northwest corner of Newton W. Ramsey, et ux's 0.275 acre tract as described in D. B. Vol. 379 Page 381, Tr. 3.

Thence S. 4° 09' 40" E. 750.76 feet to a point.

Thence S. 50° 41' 21" E. 96.68 feet to a point.

Thence S. 85° 11' 54" E. 291.08 feet to a point.

Thence S. 87° 53' 21" E. 376.46 feet to a point and there terminate.

The above described centerline of a 15 foot ingress and egress easement being on Newton W. Ramsey, et ux's 0.275 acre tract as described in D. B. Vol. 379 Page 381, Tr. 3 and his 76.5 acre tract, Tr. 2 as also described in D. B. Vol. 379 Page 381.

This description was prepared from a field survey by Leslie H. Geeslin, Reg. Surveyor 5248 on March 2, 1999



Leslie H. Geeslin

BOKESCRK\09\RAMSEYES.SAM

920120

COUNTY HIGHWAY 50 (60')
 N. 64° 27' 41" E

8.05'

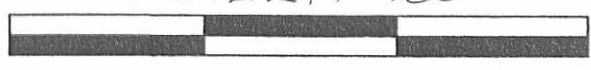
HENRY CORWIN 150 AC. (REMAINDER) D.B. VOL. 47 PG. 448

750.76'

(0.275 AC. TR. 3)

NEWTON W. RAMSEY, ET UK
 3.42 AC. (TR. 5)
 D.B. VOL. 379 PG. 381

SCALE: 1"=100'



LEGEND:
 Δ = R.R. SPIKE FOUND
 ○ = 5/8 INCH IRON BAR SET

SURVEY OF THE CENTERLINE OF A 15' INGRESS AND EGRESS EASEMENT IN VIRGINIA MILITARY SURVEY 9938, BOKESCREEK TOWNSHIP, LOGAN COUNTY, OHIO FOR NEWTON RAMSEY ON MARCH 2, 1999

60 AC. (TR. 4)

76.5 AC. (TR. 2)

S. 85° 11' 54" E. 291.08' S. 87° 53' 21" E.
 15' INGRESS - EGRESS EASEMENT 376.46'

V.M.S. 9937
 V.M.S. 9938

ROBERT C. FREDRICK
 100 AC.
 D.B. VOL. 384 PG. 251



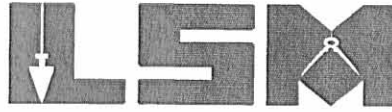
Leslie H. Geeslin
 LESLIE H. GEESLIN
 RUSHSVLVANIA, OH
 PH: (937) 468-2795
 FAX: (937) 468-2080

INDEXED
 9201 2P

Lee Surveying and Mapping Co., Inc.

Land Surveys • Topography • Subdivisions • Construction Layout

117 N. Madriver St.
Bellefontaine OH 43311



Phone: (937) 593-7335
Fax: (937) 593-7444

RAMSEY 0.314 ACRE

Lying in Virginia Military Survey 9938, Bokescreek Township, Logan County, Ohio

Being out of the Newton W. Ramsey, Trustee, original 76.5 acre tract as deeded and described in Official Record 495, Page 603, Tract II, of the Logan County Records of Deeds and being more particularly described as follows:

Beginning at a 5/8 inch iron rod found on the most southeasterly corner of the Jay D. Gillfillan 2.599 acre tract (O.R. 470, Pg. 633).

THENCE, with the east line of the said 2.599 acre tract, N 2°-50'-42" W, a distance of 163.05 feet to a 5/8 inch iron rod found.

THENCE, with a north line of the said 2.599 acre tract extended, S 87°-53'-21" E, a distance of 82.00 feet to a 5/8 inch iron rod set.

THENCE, S 5°-04'-48" E, a distance of 159.75 feet to a 5/8 inch iron rod set.

THENCE, with a south line of the said 2.599 acre tract extended, S 89°-32'-29" W, a distance of 88.00 feet to the point of beginning.

Containing 0.314 acre.

The basis for bearings is the north line of the said 2.599 acre tract, S 87°-53'-21" E, and all other bearings are from angles and distances measured in a field survey by Lee Surveying and Mapping Co., Inc. on January 2, 2003.

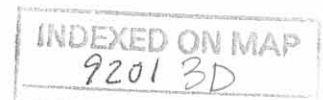
Description prepared by:



ORIGINAL STAMP IN GREEN

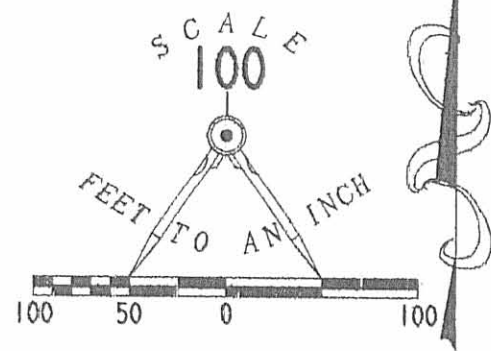
Jeffrey I. Lee
Professional Surveyor 6359
January 22, 2003

L-3511



INDEXED ON MAP
9201 3P

COUNTY HIGHWAY 50 (60')



LEGEND

- 5/8 INCH IRON ROD SET
- 5/8 INCH IRON ROD FOUND

V.M.S. 9937
VIRGINIA MILITARY SURVEY 9938

S 04° 09' 40" E
817.28'

NEWTON W. RAMSEY, TRUSTEE
ORIG. 3.42 ACRES
O.R. 495, PG. 603
TRACT V

NEWTON W. RAMSEY, TRUSTEE
ORIG. 60.0 ACRES
O.R. 495, PG. 603
TRACT IV

0.314 ACRE
TO BE ATTACHED TO THE
2.599 ACRE TRACT

(BASIS FOR BEARINGS)
S 87° 53' 21" E

368.05'
S 85° 11' 55" E

185.46'
S 87° 53' 21" E

375.11'

S 87° 53' 21" E
82.00'

JAY D. GILLFILLAN
2.599 ACRES
O.R. 470, PG. 633

S 03° 47' 45" E
141.64'

N 02° 50' 42" W
163.05'

S 05° 04' 48" E
159.75'

NEWTON W. RAMSEY, TRUSTEE
ORIG. 76.5 ACRES
O.R. 495, PG. 603
TRACT II

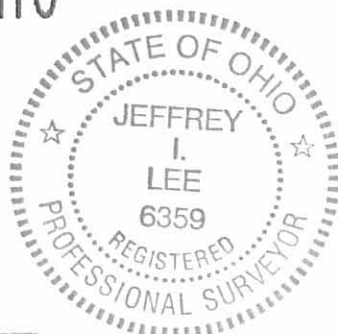
189.38'

N 89° 32' 29" E

88.00'

S 89° 32' 29" W

SURVEY OF 0.314 ACRES OUT OF THE
NEWTON W. RAMSEY, TRUSTEE
ORIGINAL 76.5 ACRE TRACT
OFFICIAL RECORD 495, PAGE 603, TRACT II
VIRGINIA MILITARY SURVEY 9938
BOKESCREEK TOWNSHIP
LOGAN COUNTY, OHIO



SURVEYED BY:

Jeffrey I. Lee
JEFFREY I. LEE
PROFESSIONAL SURVEYOR 6359
JANUARY 2, 2003

COPYRIGHT 2003 BY:

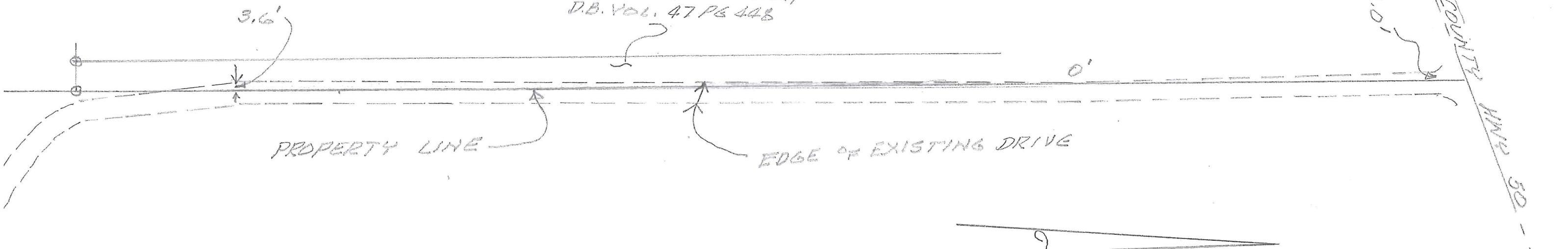
LEE SURVEYING & MAPPING CO., INC.
117 North Madriver Street
BELLEFONTAINE, OHIO 43311
(937) 593-7335

2 WORKING DAYS
BEFORE YOU DIG
CALL TOLL FREE **800-362-2764**
OHIO UTILITIES PROTECTION SERVICE.

INDEXED ON MAP ORIGINAL STAMP IN GREEN

AREA WHERE DRIVE IS WEST OF
PROPERTY LINE.

HENRY CORWIN
150 AC (REMAINDER)
D.B. VOL. 47 PG 448



SCALE: 1" = 50'



EXISTING RAMSEY DRIVE RELATIVE TO
PROPERTY LINE,
JULY 15, 1998



INDEXED ON MAP
9201

Leslie H. Geeslin
LESLIE H. GEESLIN
RUSHSVLVANIA, OH
PH 937-468-2793