

Lee Surveying and Mapping Co.



Farm Surveys • Lot Surveys • Topography • Subdivisions • Construction Layout

855 EAST SANDUSKY AVENUE
BELLEFONTAINE, OHIO 43311

(513) 593-5780

CLAYTON M. LEE, P.S.
JEFFREY I. LEE, P.S.

JOE ELLIOT SURVEY (1.902 ACRES)

Lying in V.M.S. 6154, Bokescreek Township, Logan County, Ohio.

Being off the northeast corner of that 32 acre tract in the name of Joe Elliott as deeded and described in O.R. 84, Page 522 of the Logan County Records of Deeds and being more particularly described as follows,

Beginning at a railroad spike set on the center-line of County Highway 142, marking the northeast corner of said 32 acres (County engineer's station 47+91.27).

THENCE, with the said center-line of County Highway 142, S 12°08' W, a distance of 150.00 feet to a railroad spike (set).

THENCE, N 78°-44'-33" W, a distance of 552.40 feet to a 1/2" iron rod (set).

THENCE, N 12°-08' E, a distance of 150.00 feet to a 1/2" iron rod set on the north line of said 32 acre tract.

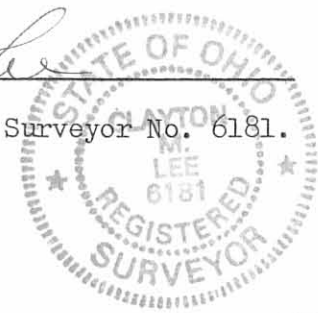
THENCE, with the said north line, S 78°-44'-33" E, a distance of 552.40 feet to the point of beginning.

Containing 1.902 acres.

This description prepared from an actual field survey,
Basis for bearings: Center-line of County Highway 142 = S 12°-08' W.

Prepared by:

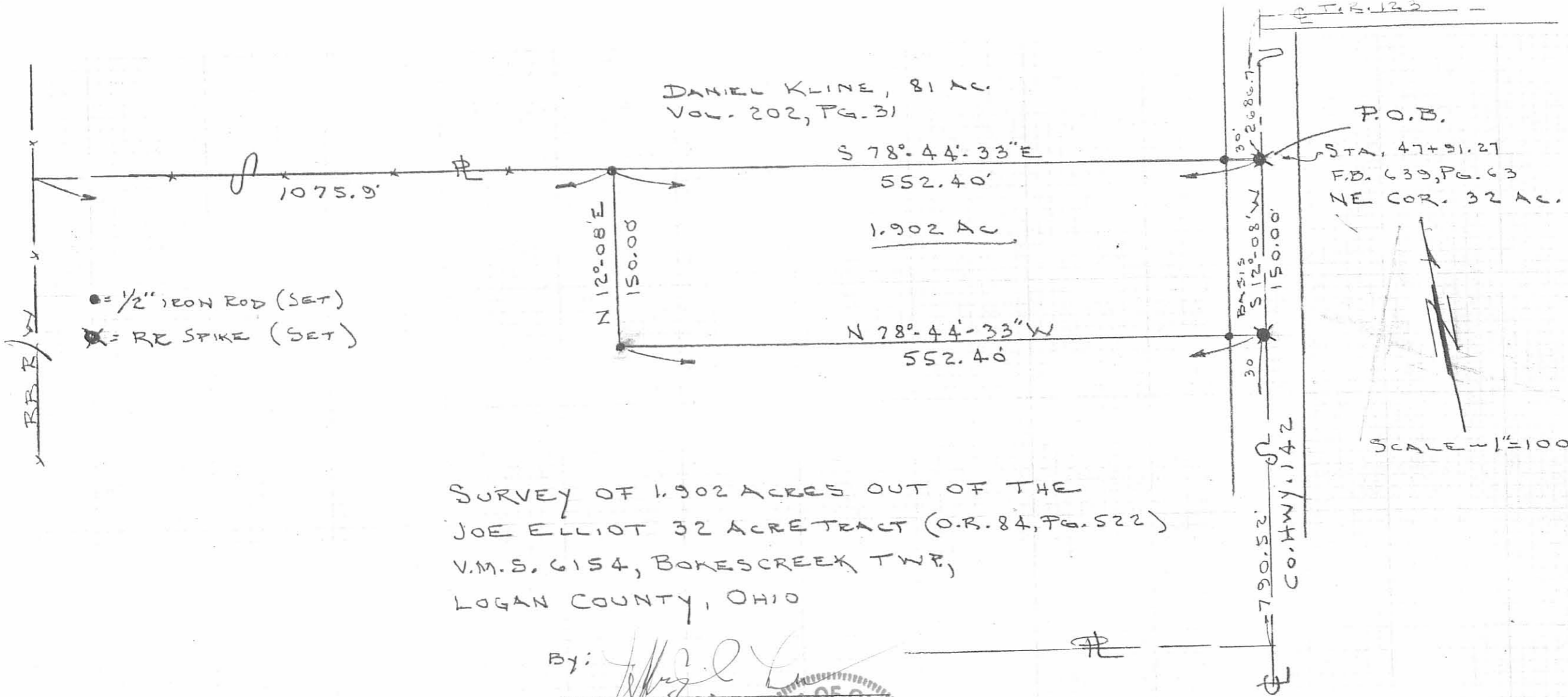
Clayton M. Lee
Clayton M. Lee
Registered Professional Surveyor No. 6181.
September 18, 1989



ORIGINAL STAMP IN GREEN

L-1754

INDEXED ON MAP
7947 ID



DANIEL KLINE, 81 AC.
VOL. 202, PG. 31

● = 1/2" IRON ROD (SET)
✕ = RE SPIKE (SET)

P.O.B.
STA. 47+91.27
F.D. 639, PG. 63
NE COR. 32 AC.



SURVEY OF 1.902 ACRES OUT OF THE
JOE ELLIOT 32 ACRE TRACT (O.R. 84, PG. 522)
V.M.S. 6154, BOKESCREEK TWP,
LOGAN COUNTY, OHIO

By: *[Signature]*
JEFFREY I. LEE
REG. SURVEYOR
SEPT.



ORIGINAL STAMP IN GREEN

INDEXED ON MAP
7947 1P