

# Lee Surveying and Mapping Co., Inc.

Land Surveys • Topography • Subdivisions • Construction Layout

117 N. Madriver St.  
Bellefontaine OH 43311



Phone: (937) 593-7335  
Fax: (937) 593-7444

## VAN WINKLE 1.364 ACRE TRACT

Lying in Virginia Military Survey 775-6155, Bokescreek Township, Logan County, Ohio.

Being out of the Robert A. Van Winkle and Sharon S. Van Winkle original 43.86 acre tract as deeded and described in Volume 339, Page 842, Tract One of the Logan County Records of Deeds and being more particularly described as follows:

Beginning at a railroad spike found at the intersection of the center-lines of County Highway 125 and State Route 47 and on the east Corporation Line of the Village of West Mansfield.

THENCE, with the center-line of State Route 47 (60 feet wide), S 82°-15'-00" E, a distance of 254.00 feet to a MAG nail set.

THENCE, S 14°-10'-00" W, a distance of 240.33 feet to a 5/8 inch iron rod set, passing a 5/8 inch iron rod set at 30.18 feet.

THENCE, N 84°-58'-49" W, a distance of 233.34 feet to a 5/8 inch iron rod set.

THENCE, with the east Corporation line of the Village of West Mansfield and the east line of the Robert A. Powell 3.012 acre tract (O.R. 420, Pg. 222), N 9°-06'-34" E, a distance of 250.01 feet to the point of beginning, passing a 5/8 inch iron rod found at 220.01 feet.

Containing 1.364 acre.

Subject to all easements and rights-of-way of record.

The basis for bearings is the center-line of State Route 47 being N 82°-15'-00" W, and all other bearings are from angles and distances measured in a field survey by Lee Surveying and Mapping Co., Inc. on 10, 2001.

Description prepared by:

Jeffrey I. Lee  
Professional Surveyor 6359  
May 9, 2001



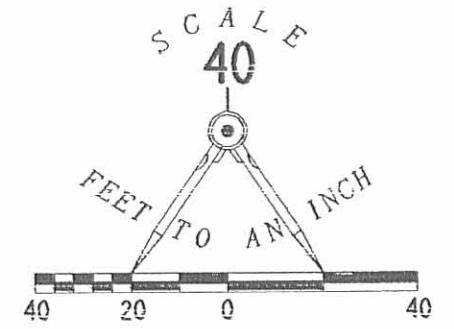
ORIGINAL STAMP IN L-667N

INDEXED ON MAP  
5804 1D

REC'D 5-15-01 SAM OK

COUNTY HIGHWAY 125

EAST CENTER STREET



LEGEND

- ⊗ RAILROAD SPIKE FOUND
- 5/8 INCH IRON ROD FOUND
- 5/8 INCH IRON ROD SET
- ⊙ MAG NAIL SET

ROBERT A. POWELL  
3.012 ACRE TRACT  
O.R. 420, PG. 222

WEST MANSFIELD CORPORATION  
N 09° 06' 34" E  
250.01'

30 FEET WIDE PIPELINE EASEMENT  
O.R. 75, PG. 534

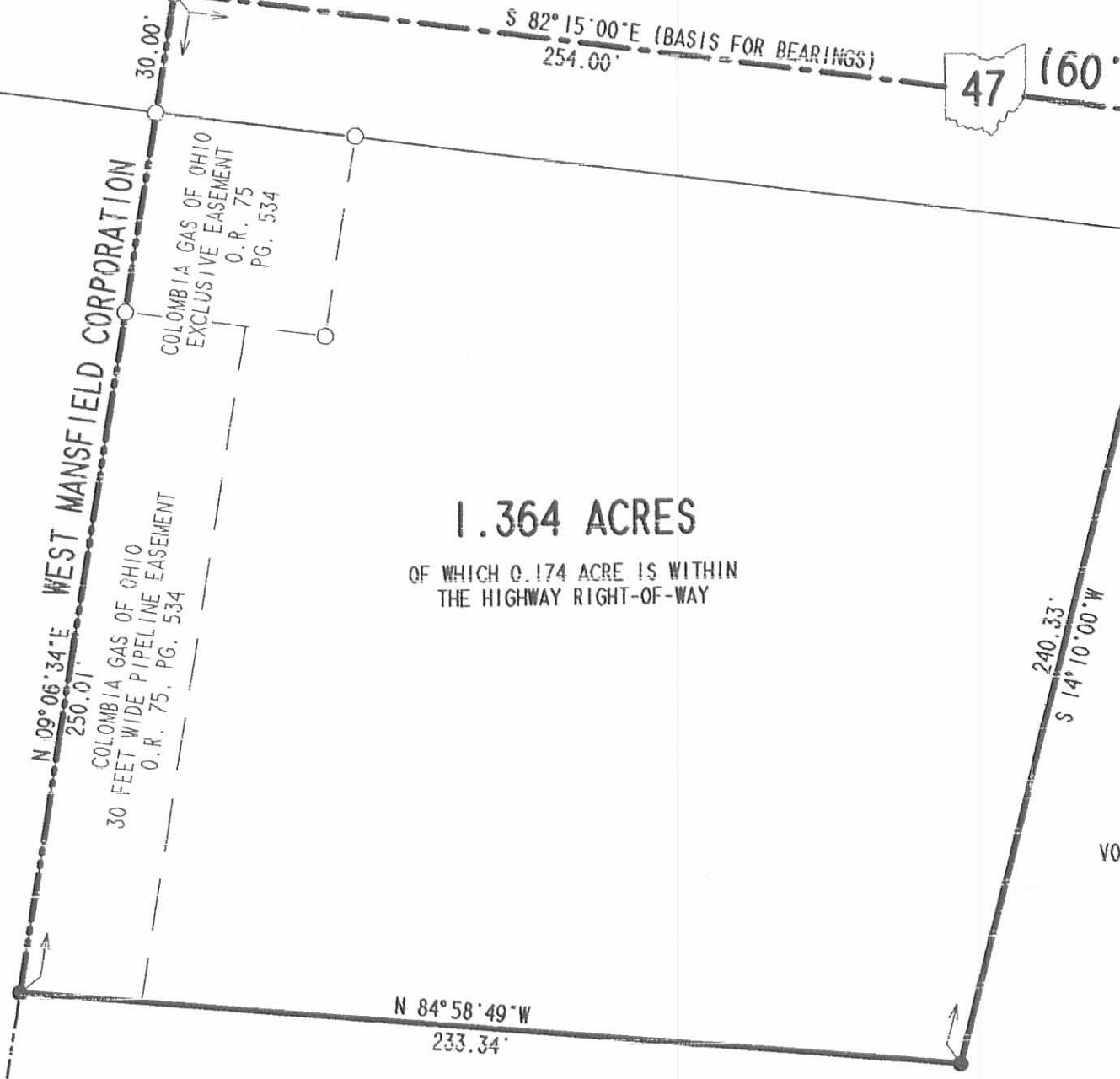
COLOMBIA GAS OF OHIO  
EXCLUSIVE EASEMENT  
O.R. 75  
PG. 534

1.364 ACRES  
OF WHICH 0.174 ACRE IS WITHIN  
THE HIGHWAY RIGHT-OF-WAY

47 (60' R/W)

ROBERT A. VAN WINKLE  
ORIG. 43.86 ACRE TRACT  
VOL. 339, PG. 842, TRACT ONE

SURVEY OF A 1.364 ACRE TRACT  
OUT OF THE ROBERT A. VAN WINKLE  
AND SHARON S. VAN WINKLE  
ORIGINAL 43.86 ACRE TRACT  
VOLUME 339, PAGE 842, TRACT ONE  
VIRGINIA MILITARY SURVEY 775-6155  
BOKESCREEK TOWNSHIP  
LOGAN COUNTY, OHIO



N 84° 58' 49" W  
233.34'

ROBERT A. VAN WINKLE  
ORIG. 43.86 ACRE TRACT ONE  
VOL. 339, PG. 842, TRACT ONE



SURVEYED BY:

*Jeffrey I. Lee*  
JEFFREY I. LEE  
PROFESSIONAL SURVEYOR 6359  
APRIL 10, 2001

ORIGINAL STAMP IN GREEN

COPYRIGHT 2001 BY:  
LEE SURVEYING & MAPPING CO., INC.  
117 North Madriver Street  
BELLEFONTAINE, OHIO 43311  
(937) 593-7335

2 WORKING DAYS  
BEFORE YOU DIG  
CALL TOLL FREE 800-362-2764  
OHIO UTILITIES PROTECTION SERVICE.

INDEXED ON MAP  
5864 1P