

Road 142

Bokes Creek Twp.

10-24-38

A Stone (found) SW corner 9893
SE corner 9892 and
E 142 and E 26

B Stone (found) SE corner 9914
and SW corner 9915
E 142 and E 20

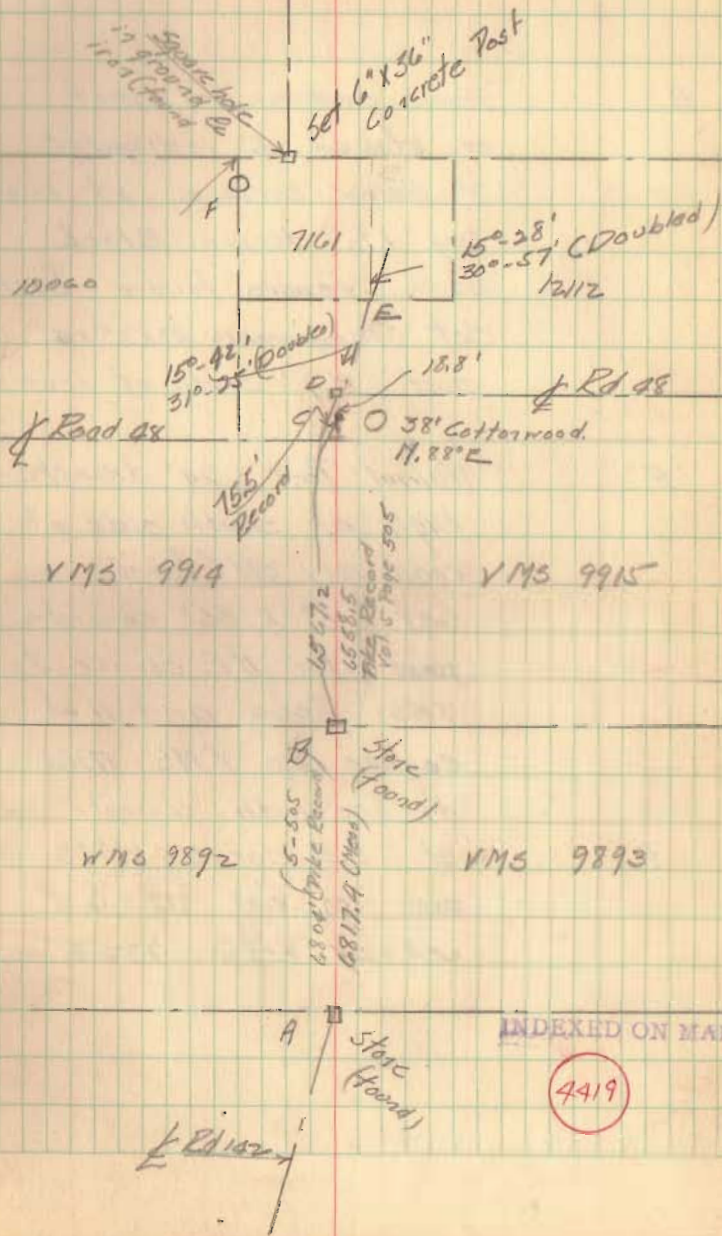
C Bolt (set) 588 W at
center of 38" Cottonwood.
at angle in 142. See
Free Turnpike Record
Book 5 Page 493

D Stone (found) Center at
Road 48 E See Road
Record Book Page

C. A. Inskip
C. Wilgus
H. Campbell

A. Phillips
Dobie

11



Continued

E Found evidence of post
or stake 6" in diameter
3' below surface at road
Dug 1 1/2' deeper. Black
earth tapers toward bottom
Set temporary 3" x 3" x 4'
post 3.7' south of iron bar

"F" Walnut Post 24" diameter 4 1/2'
high on south side of
road very old (found)
Set 6" x 36" concrete
post for NE corner to
VMS 10060 and NW
corner to VMS 17161
on line with concrete post
at S.E. corner VMS 9958
and iron bar at S.W.
corner VMS 9958

15