

Earl O. Jacobs - Edgar Farrington Survey

The following described real estate situated in the Township of Bokescreek, County of Logan, State of Ohio and being in Virginia Military Survey No.'s 9938 and 10060 and being more particularly described as follows:

Beginning at an iron pin, being Sta. 318+37, S. R. No. 292, as shown in Logan County Engineers Field Book No. 572, Page 56. Said iron pin being in the North line of Mayme L. Lindamood's 45.58 Acre tract;

Thence with Lindamood's north line, N. $84^{\circ} 45'$ E. 787.00 feet to a hub, northeast corner to Lindamood's tract, passing through an iron bar at 31.73 feet;

Thence with Lindamood's east line, S. $4^{\circ} 58'$ E. 1101.00 feet to a wood corner post, southeast corner to Lindamood's 45.58 Acre tract and northwest corner to Lindamood's 56.60 Acre tract;

Thence with Lindamood's 56.60 Acre tract and Ramsey's 25.00 Acre tract, north lines, N. $85^{\circ} 32'$ E. 2,442.00 feet to a wood corner post, northeast corner to Ramsey and in the west line of Elmer Kavanaugh's land, passing the line between V.M.S. Survey No. 9938 and V.M.S. Survey No. 10060 at 1530.00 feet and Ramsey's 25.00 Acre tract northwest corner at 1717.00 feet;

Thence with Kavanaugh's west line, N. $5^{\circ} 28'$ W. 1162.50 feet to a wood corner post, northwest corner to Kavanaugh and in the south line of William S. Ramsey's 101.88 Acre tract;

Thence with Ramsey's south line the following three courses and distances, S. $85^{\circ} 00'$ W. 589.40 feet to a steel post in concrete, S. $5^{\circ} 50'$ E. 463.00 feet to a steel post in concrete and S. $84^{\circ} 10'$ W. 286.60 feet to a steel post in concrete, the last point being in the line between V.M.S. No. 9938 and V.M.S. No. 10060 and also being the southwest corner of Ramsey's 101.88 Acre tract and the southeast corner to Ramsey's 85.89 Acre tract;

Thence continuing with the south line of Ramsey's 85.89 Acre tract the following four courses and distances, N. $83^{\circ} 20'$ W. 113.50 feet to a steel post in concrete, N. $80^{\circ} 58'$ W. 1467.00 feet to a steel post in concrete, N. $4^{\circ} 58'$ W. 48.10 feet to a steel post and S. $84^{\circ} 45'$ W. 793.70 feet to a small iron in the center line of S. R. No. 292 and being Sta. 318+59 as shown in Field Book No. 572, page 56 and being the southwest corner to Ramsey's 85.89 Acre tract, passing a steel post in concrete at 763.00 feet;

(2)

Thence with the center line of S. R. No. 292, S. 13° 45' W. 22.00 feet
to the place of beginning, containing 52.31 Acres, more or less.

Of the above 52.31 Acres, there is 31.29 Acres in V.M.S. No. 9938 and
21.02 Acres in V.M.S. No. 10060.

I hereby certify that this is a true and accurate description of a survey
made by me on April 13, 1968.

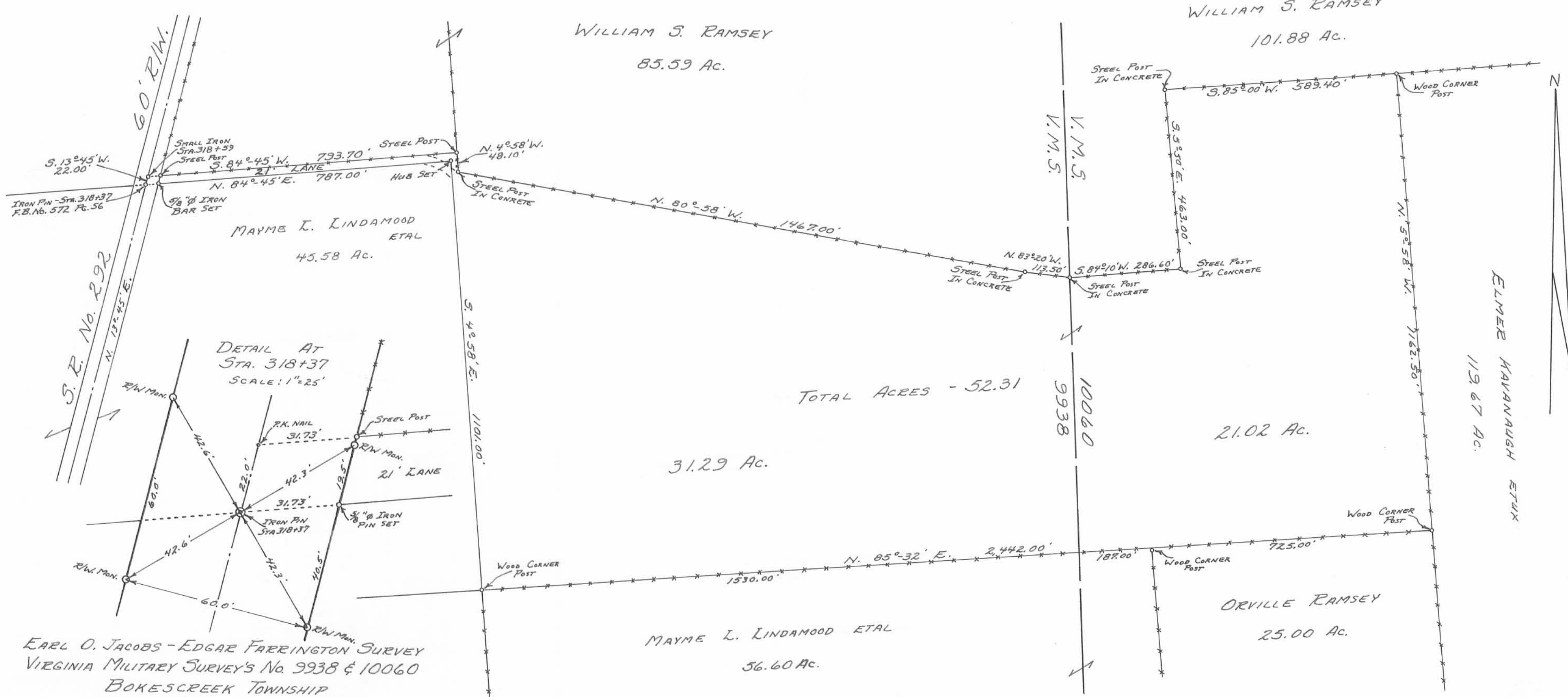
Daniel E. Gilbert

Daniel E. Gilbert, P.S.
Reg. Sur. No. 5402
428 N. Madriver St.
Bellevue, Ohio
43111



(4213) 10-2

INDEXED ON MAR



DETAIL AT
STA. 318+37
SCALE: 1"=25'

EARL O. JACOBS - EDGAR FARRINGTON SURVEY
VIRGINIA MILITARY SURVEY'S No. 9938 & 10060
BOKESCREEK TOWNSHIP
LOGAN COUNTY, OHIO
APRIL 13, 1968

SCALE: 1"=200'

SURVEYED AND PLATTED BY
DANIEL E. GILBERT, P.S.
REG. SUR. No. 5402