

FB 702

RESURVEY OF C.H. No. 131
 BOKESCREEK TOWNSHIP
 EXISTING R/W = 40'
 PROPOSED R/W = 60'

PT 101+62.32

99+17.0 1/2" x 1/2" x 20" Iron Bar Found - 53°-16' Rt

PC. 96+29.65

Curve Data

$\Delta = 53^\circ - 16'$
 $D = 10^\circ - 00'$
 $R = 572.36$
 $T = 287.35'$
 $L = 532.67'$

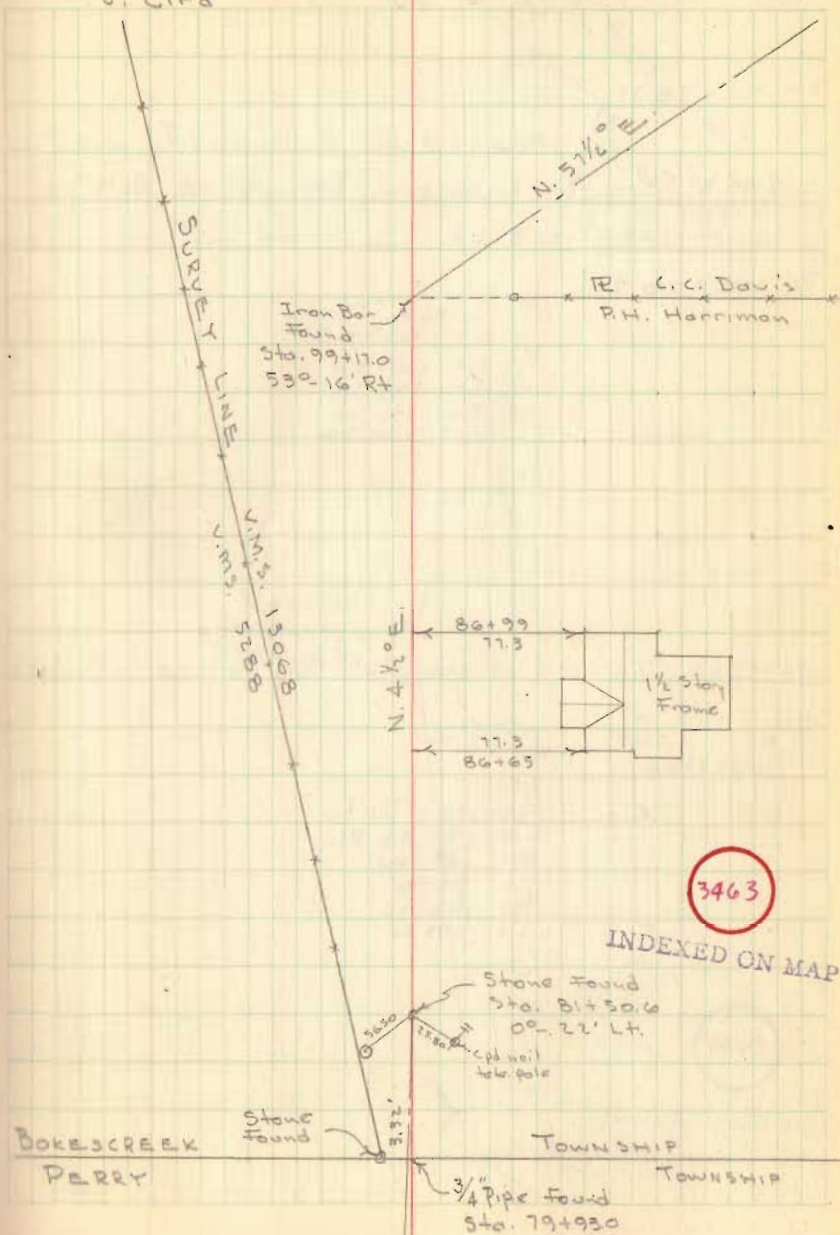
SEE FB # 561, PGS 40-43 FOR
 ORIGINAL SURVEY - AUG. 15, 1932

81+50.6 Stone Found - 0°-22' Lt. - 1" # Bar
 Set after Const.

79+50.0 3/4" Pipe Found - Township Line
 1" # Bar Set after Construction

D. Gilbert - Dodson
 D. Lewis *
 J. Cira

Nov. 21, 1960
 Cool - Fair 32



FB 702

C.H. No. 131

PT 114+78.71

111+87.8 Iron Bar found, bent, Replaced with $\frac{3}{4}$ " pipe
67°-03' Lt.

P.C. 108+08.21

Curve Data
 $\Delta = 67^{\circ}-03'$
 $D = 10^{\circ}-00'$
 $T = 379.59'$
 $R = 572.96'$
 $L = 670.50'$

PT 105+70.22

104+92.20 Did not find iron pin - Set $\frac{3}{4}$ " pipe - 15°-43' Rt.

P.C. 104+13.02

Curve Data
 $\Delta = 15^{\circ}-43'$ Rt
 $D = 10^{\circ}-00'$
 $T = 79.18'$
 $R = 572.96'$
 $L = 157.20'$

11-22-60

Fair - 33

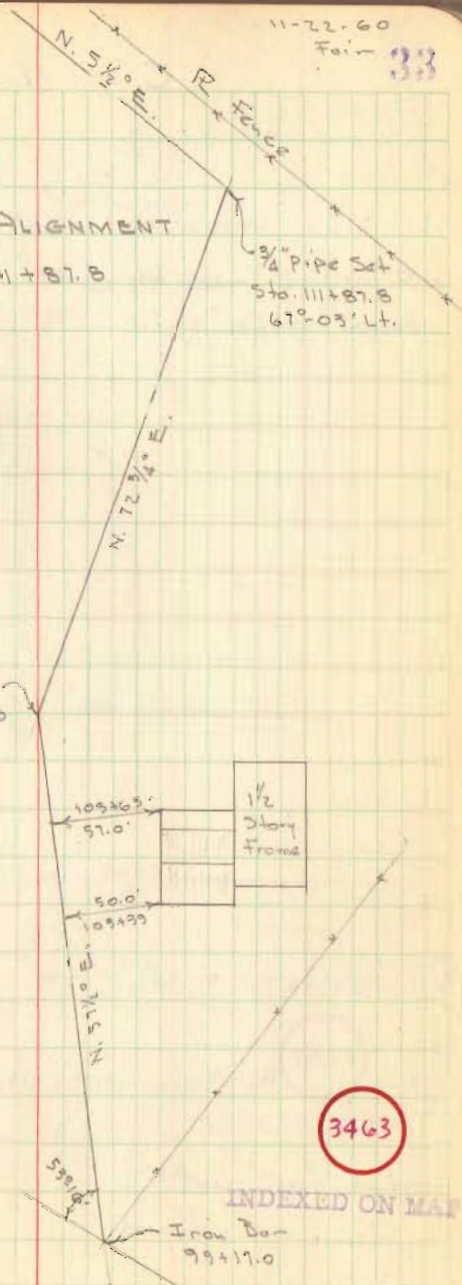
SEE REVISED ALIGNMENT

STA. 99+17.0 To 111+87.8

PG. 35

$\frac{3}{4}$ " pipe Set
 Sta. 104+92.20
 15°-43' Rt.

$\frac{3}{4}$ " Pipe Set
 Sta. 111+87.8
 67°-03' Lt.



FB 702

C. H. No. 131

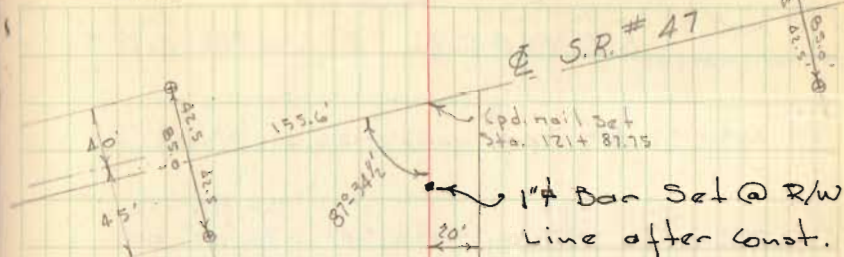
121+87.75 Lopped nail set Φ S.R. # 47

PT 114+78.11

114+06 R Fence McColluch - Davis

D.G. Ibert
D. Tevitt
J. Cira

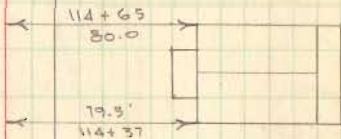
11-22-60



NOTE: Φ S.R. 47 AS
SHOWN ABOVE INCORRECT.
SHOULD BE 40' ON N. &
45' ON SOUTH - NAIL
SET AS SHOWN - 422-422'

N. $5\frac{1}{2}$ ' E.

Property Line



3463

INDEXED ON MAP

1" Bar Set after Const.

FB 702

C. H. No. 131
 REVISED ALIGNMENT

PT 115+35.63 Back - 115+26.41 Ahead

112+59.9	PI Harrow tooth set	$\Delta = 59^{\circ}-12'$
		$D = 10^{\circ}-00'$
		$T = 325.49$
		$R = 572.96$
		$L = 592.00$
		$E = 86.00$

PC 109+34.41

105+12.9 $\frac{3}{4}$ " Pipe - No Angle (old Sta. 104+92.20)

PT 102+86.21

100+13.38 PI $\frac{3}{4}$ " Pipe Set

PC 96+75.21

$\Delta = 61^{\circ}-06'$
$D = 10^{\circ}-00'$
$R = 572.96$
$T = 338.17$
$L = 611.00$

D. Dodson
 D. Gilbert
 D. Lewis
 J. Lind

3-27-61

35

1" Bar Set
 after Const.

