

Road 60
Bloomfield Tap

60' - Commissioners Journal No. 5
Pages 97 - 183 (1837)

10+00

5+00

1+00

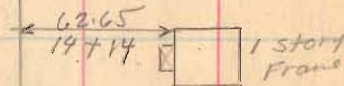
Minimum ends
30' from d

1728

INDEXED ON MAP

July-13-1936
Warren
F. Wright
J. Montgomery
G. Wilgus
Max James
Joe Roberts

84



concrete
box



2+25

Metz St. Ditch →



Road. 60

36+00

32+00

24+25

21+00

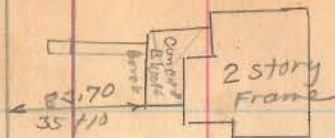
15+00

1728

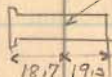
INDEXED ON MAP

7-13-36

55



± 30" c.i.
32+41



Section 19
J. E. Smith

T. 7 R. 8

Gov. BPA

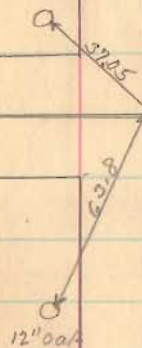
Philip Metz

Road. 23

Road. 23

Hughes

Viola B. Clayton

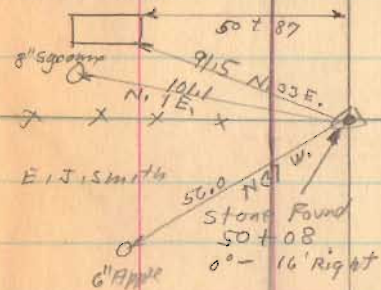


Section 24

T. 7 R. 7

Road 60

J. L. West
1898
District No. 5
Brick School



7-13-04

86

Nevin J. Smith

Road 34

See Book 396

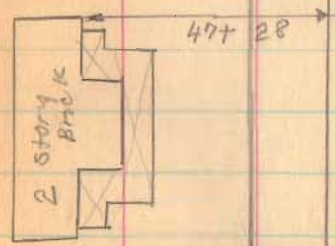
Philip J. Metz

56+00

51+00

49+00

43+00



172B

INDEXED ON MAP

148 12.2

→ 39+20 & stone box

Road. 60

72+00

66+50

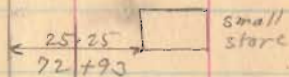
60+00

1728

INDEXED ON MAP

7-13-36

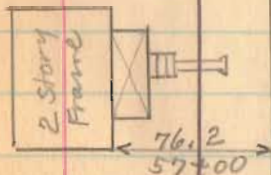
57



Emery Garling

x 60+26 x

NEWELL U. SMITH



N. Hoffmann

x 56+70 x

J. L. West

Road 60

Evans Devcon Co.

89+69

E.W. Garling



July -14-1936

Chas
 F. Wright
 J. Mountgomery
 G. Wilgus
 Max James
 Joe Roberts

38



section 20

T. 7 R. 8

E. W. Garling

E. Y. Garling

Concrete Post

Road 35

33.40

82.20

Stone found.

No. Angle

76+51

Road 35
 see Book 601
 page 64

N. Huffman

Concrete Post

E. Y. Garling

section 19

T. 7 R. 8

88+00

83+00

76+00

1728

INDEXED ON MAP

Road 60

115+50

110+00

104+00

101+00

94+00

INDEXED ON MAP

1728

Florence
Kemp
116+08
Evans Dev Co

Dug
NoiLock

EVANS Dev Co

Road 53
see Book 60/
Page 67

EVANS Dev Co

1 story
Frame

64.80
95+90

7-14-36

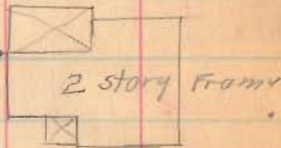
John Wilder mouth 23

Road 53

116+08 Appoint to

W.E. & H.B. Garling.

96.70
107+46



2 story Frame

W.E. & H.B. Garling

stone found.
102+88
02 08 47

32.25

80.00
S. 27 W.

E. Knief

E. Knief

100+87

E.Y. Garling

10" Pipe

Road 60

125700

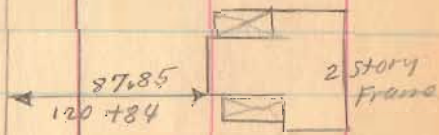
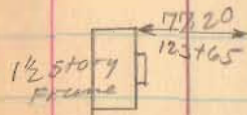
120765

1726

INDEXED ON MAP

7-14-34

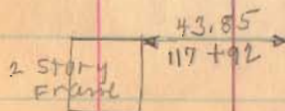
60



Minnie Day, mple.

x x 118+73

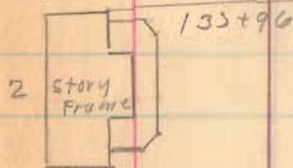
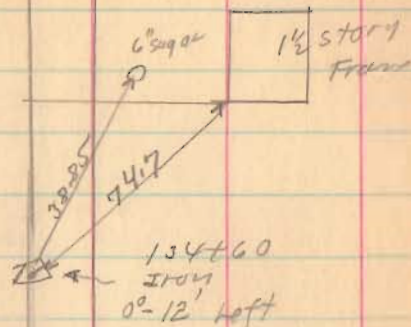
Florence
Konabrake



Flood Co

7-14-36

61



134+60

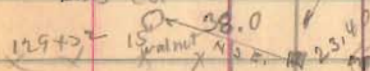
stake
129+32
0°-33' left.

section 21

T. 7 R. 8

Ins Co.

Ray Darlymple



119+32

Steel Post
in corner
John Wilder

129+25

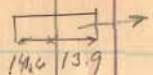
Miner M.
Darlymple

Section 21 T. 7 R. 8

Road. Co

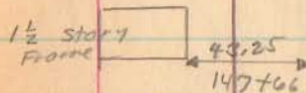
7-14-36

63



150+07 & stone Box

^ ^ ^ ^
 148+55
 W. F. Wahler



x 147+37

157+00

146+00

141+00

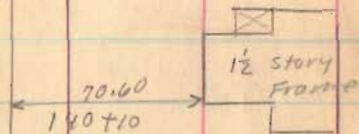
old Church Lot 1

x x x x
 142+61
 Ins. 001

Geo. Metz

142+65

Arton Rex
John Culver



Arton Rex

136+00

Ray Early

1728

INDEXED ON MAP

Road 20

155+72

154+00

1728

NEEDED ON MAP

7-14-36

63

