

Shaffer survey (continued)

A } see Page 41
 B }

ABCP = 151.74 → see Page 43

CD TARIFF $\frac{3.82}{19.56}$

West of Road 59
 East " " "

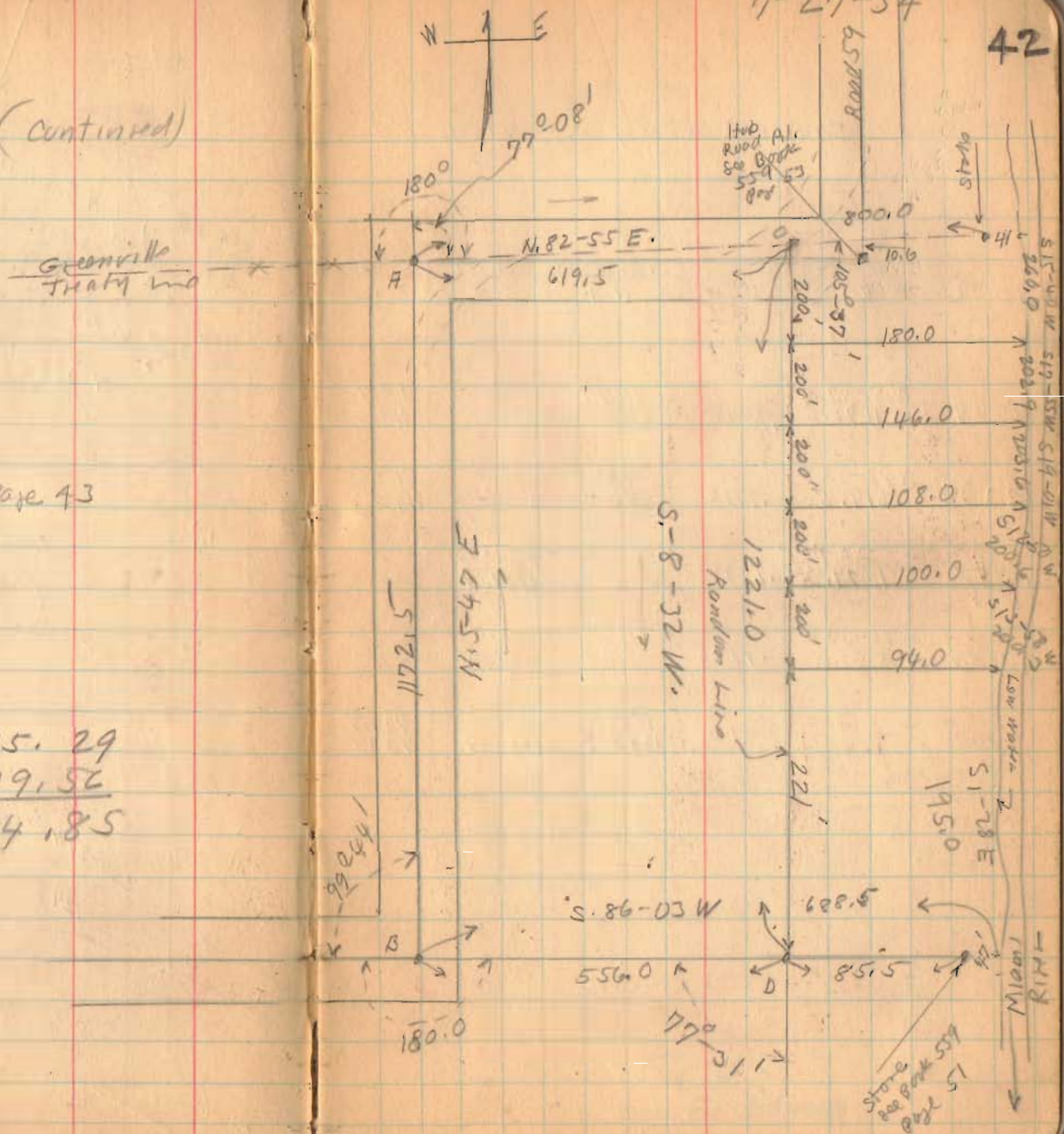
65.29
19.56
 84.85

INDEXED ON MAP

1596

7-27-34

42



Shaffer Survey (Continued)

Cosine	Bearg Dist	Sine	Latitude (Course)		Dept ET	Course W-	D.M.I.D	D.M.I.D (Lat)	
			N+	S-				N+	S-
.9944	N. 5-47 E 1192.5	.1008	1167.5 1166.5		118.7 118.2		118.7	138, 582	
.1203	N. 22-55 E 619.5	.9924	76.8 76.4		65.8 114.3		853.2	65 526	
.9889	S. 8-32 W. 1221.0	.1484		1206.2 1207.4		180.7 181.2	1288.3		1554, 076
.0689	S. 86-03 W 556.0	.9976		38.0 88.3		554.7 553.8	553.8		21, 044
			1244.2 1242.9	1244.2 1245.7	704.5 733.0	734.5 735.9		204, 108	1, 575, 120 204, 108

2
43560

1,371,012
685500
15,73705
15,74

(See Pg. 42)

1596

shaffer survey (continued)

Cosine	Bearing Dist.	Sine	Lat (Cosine)		Dept (Sine)		DMD	(DIM. D. X Lat)	
			N. +	S. -	E. +	W. -		N. +	S. -
9996	N. 11-38 E 1094.0	.0285	1672.3 1673.3		48.0 48.3		48.0		81,230
.1219	N. 83-0 E 1578.5	.9925	194.6 194.9		1585.5 1586.5		1618.5		327,220
.1253	N. 82-55 E 1767.5	.9924	94.5 94.6		261.0 261.9		4028.0		329,840
.9949	S. 5-49 W 1177.5	.1008		1167.0 1166.5		118.4 118.2	4670.6		5,450,590
.0689	S. 86-03 W 1261.0	.9976		87.0 86.9		1259.0 1258.0	3293.2		286,508
.5814	S. 54-27 W 1249.0	.8136		727.2 726.2		1017.1 1016.2	1017, 1		739,635
			1981.2 1982.8	1981.2 1979.6	2394.5 2390.5	2394.5 2392.4			788,290

6,496,703
788,290
2 (5,688,44)
4356.0 (2844221
45,29

1596

INDEXED ON MAP

1934

Shaffer Survey.

The following described land in Section 24, Town 2, Range 8 of Miami River Survey and being in Bloomfield Township, Logan County Ohio.

Beginning at a post at John W. Melvin S.W. corner, said post being in the Greenville Treaty line at the S.W. corner of Nancy Stewart Section, Town 7 South Range 9 East; thence with the Greenville Treaty line N. 82° 55' E. 767.5 feet to a stone at an angle in Road No. 59 continuing with the Greenville Treaty line N. 82° 55' E. 841.0 feet to the N.E. corner of Fractional Section 24, Town 2, Range 8 of Miami River Survey said point being on the West water's edge of The Great Miami River; thence downstream with said West bank the following courses and distances S. 15° 40' W. 260.0 feet; S. 17° 55' W. 202.9 feet; S. 19° 01' W. 203.6 feet S. 12° 50' W. 200.6 feet; S. 13° 50' W. 200.3 feet S. 1° 28' E. 195.0 feet to N.E. corner of Perry Wright .77 acre tract; thence S. 86° 03' W. 688.5 feet to a hub at an angle in Road 59, the last described line passing a stone at 47.0 feet; thence with the center of Road 59 S. 86° 03' W. 1261.0 feet to an iron; thence with center of Road 59 S. 54° 27' W. 1249.0 feet to a hub at Harry Evans S.W. corner; thence with said Evans East line N. 1° 58' E. 1694 feet to a point in Greenville Treaty line; thence with The Greenville Treaty line N. 83° 0' E. 1598.5 feet to place of beginning said tract containing 84.85 acres more or less 65.29 acres being on the West side

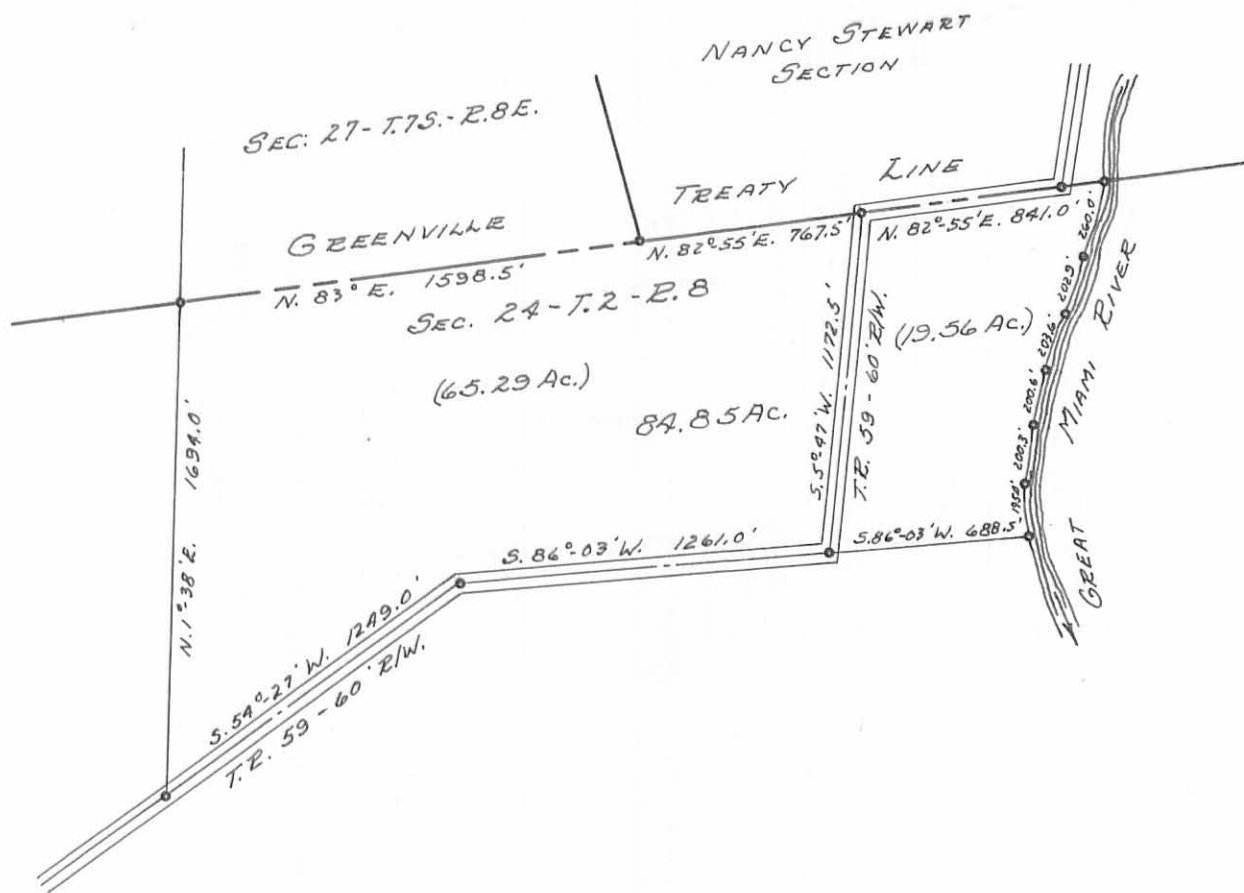
1596 1D-1

of Road No.59 and 19.56 acres East of Road No.59, said survey
having been made July 1934 as shown in Logan County Surveyor's
Book 521, Pages 41 and 42.

1596

INDEXED ON MAP

34



SHAFER SURVEY
 SECTION 24, TOWN 2, RANGE 8
 BLOOMFIELD TOWNSHIP
 LOGAN COUNTY, OHIO
 SURVEYED BY F. F. WRIGHT AND
 E. K. CORE - JULY 27, 1934
 SEE F. B. NO. 521 PAGES 41, 42 & 43
 SCALE 1" = 660'

1596 H