

Road # 79
Bloomfield

JUNE 30 - 30

A. M. Renick	1
Harold Taylor	1
Leonard Tamblin	1
Ivan Wickersham	1
J. S. Crane	1

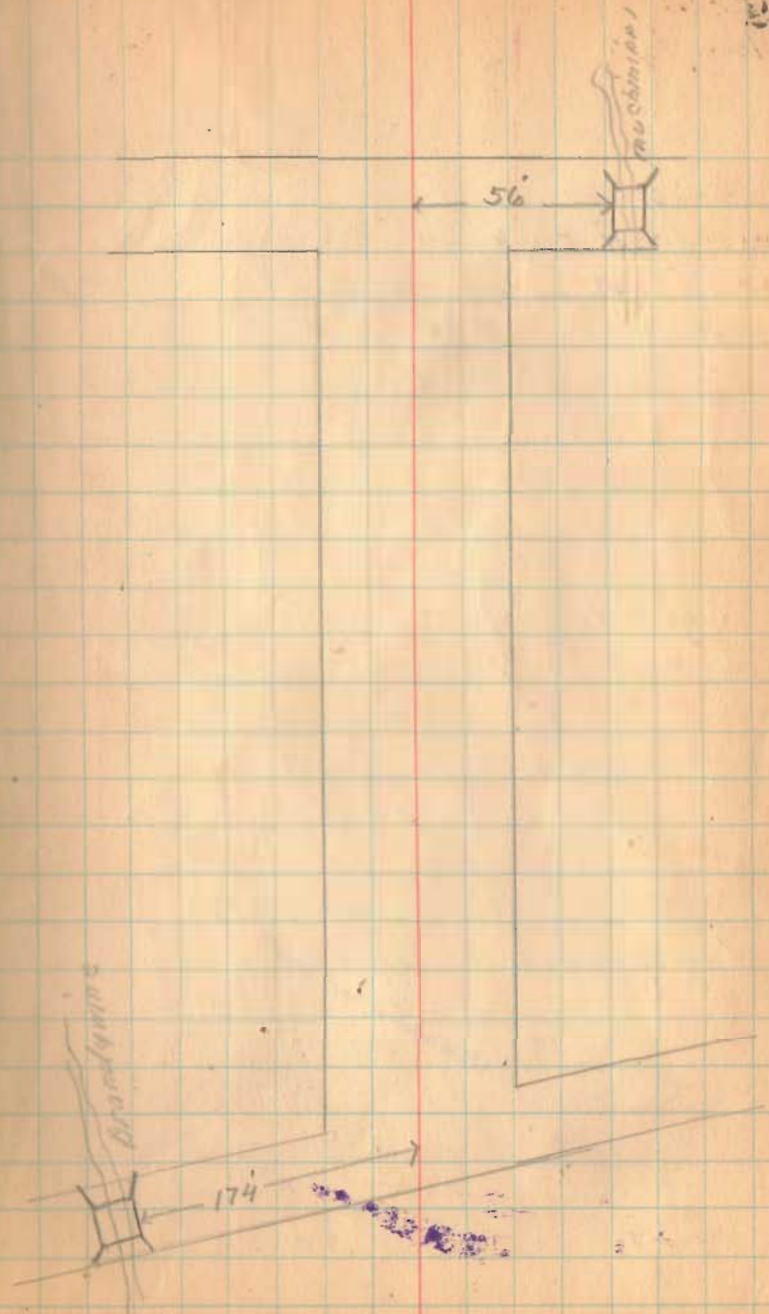
Lunches

300

1332

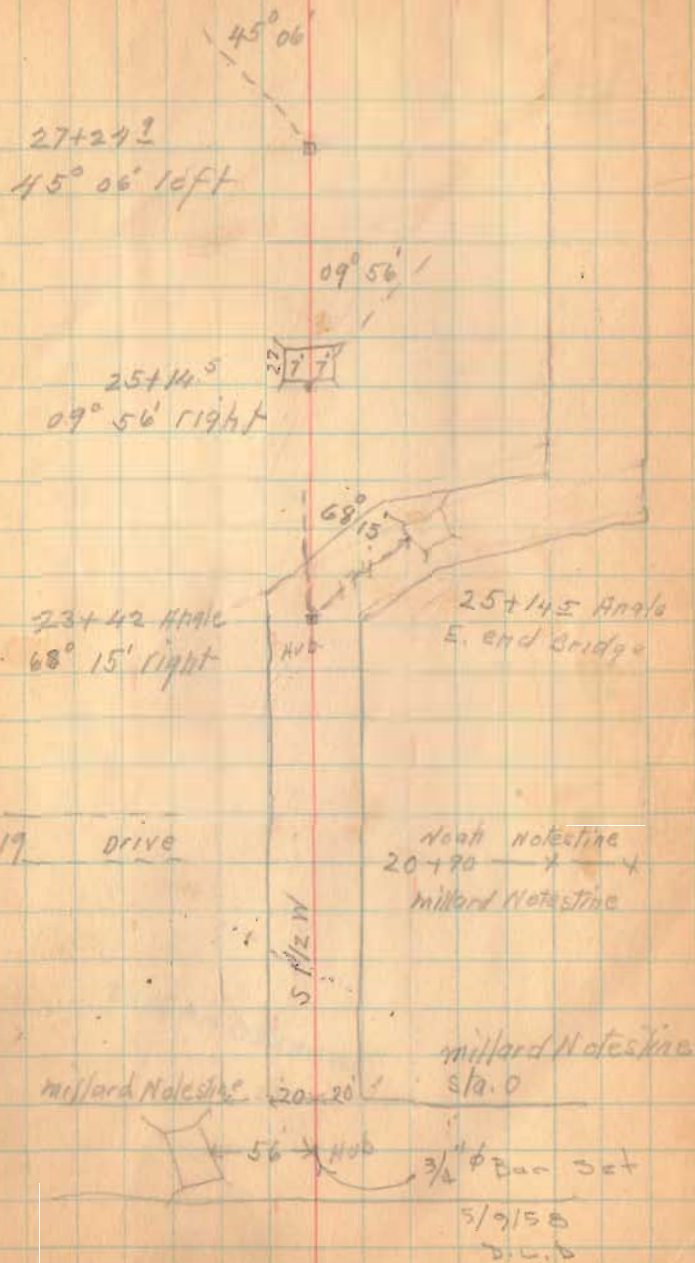
INDEXED ON MAP

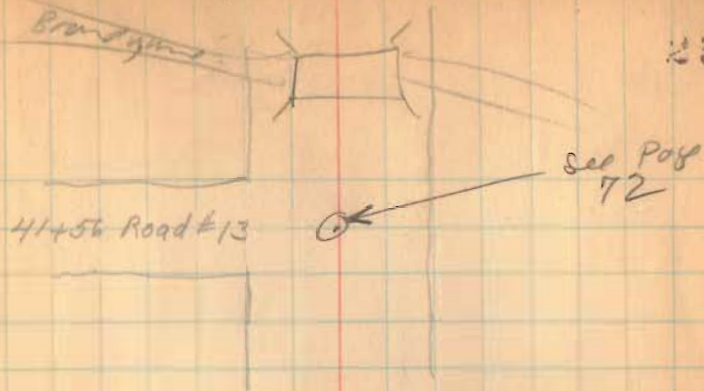
3



(See Book 49
Pages 23 TO 26)

1522
INDEX - VIA MAP





J. G. Ellis
32+18
North Holston

34+20 = 160 or AM 12 13

31+00 drive

N. 89° W. 26'

North Holston 29+30?

Millard Holston 86° 45' right

26' from P. 1. Hub 10
Acres North

29° 45'

S. 54 1/2° W.

27+97 1/2 Hub

1332
INDEXED ON MAP