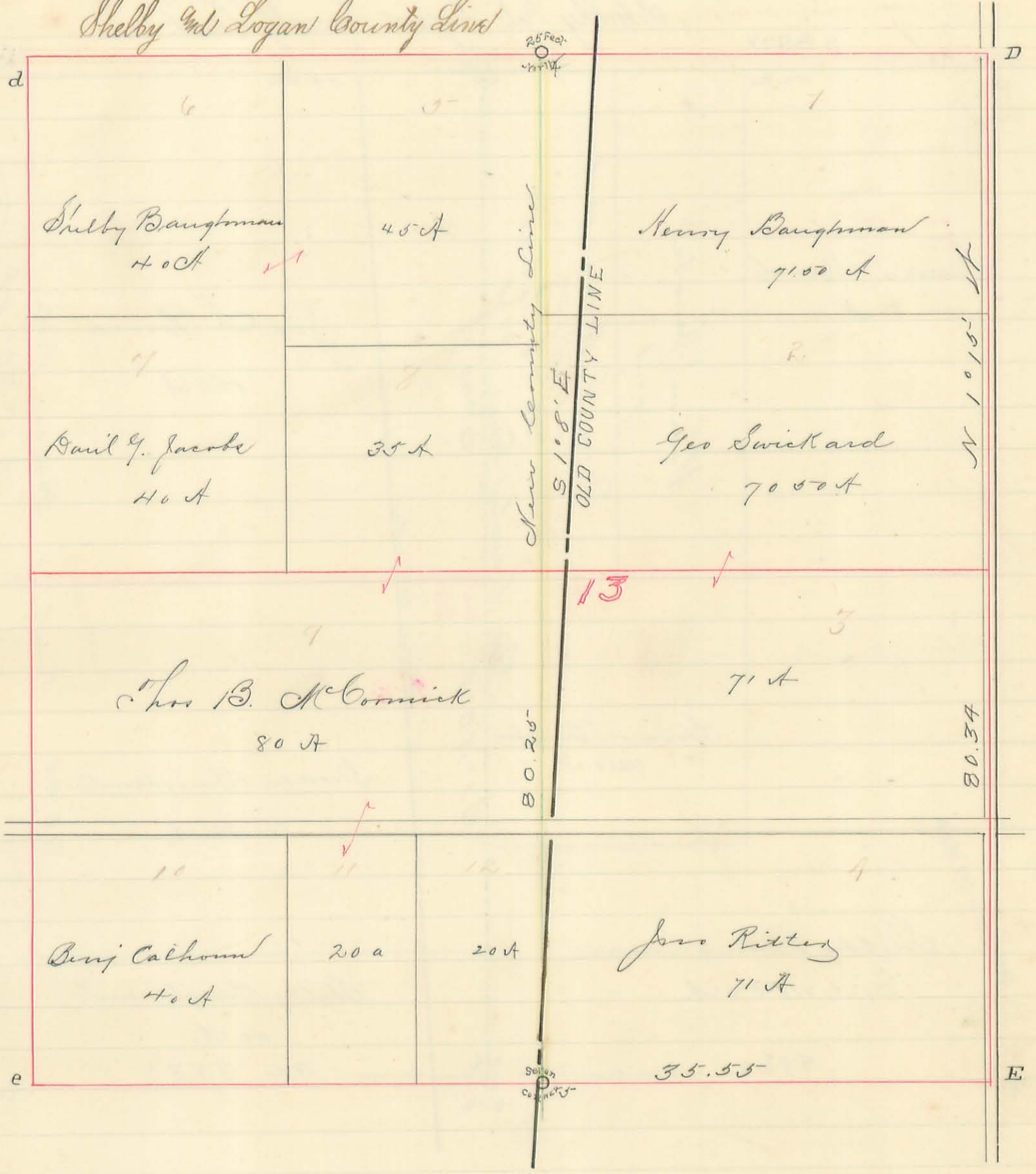


Plat of Sec. 15 T. 7. R. 7.

RECORD OF SURVEYS
BOOK C

Shelby and Logan County Lines

348



— Report of, —
— County Line Survey. —
— Between —
— LOGAN & CHELBY —
— COUNTIES. —
— 1884. —
— — —

Filed Jan'y 12th 1885
Geo. H. Allen
Clerk

Recorded on Journal No. 1
Page 261 to 269

INDEXED ON FILE
1884 151

To the Clerk of the Court
of Common Pleas, of
Logan Co. Ohio.

The undersigned
surveyors of Shelby & Logan
counties, make the follow-
ing report of the survey:
location & marking of the
new county line, between
Shelby & Logan counties,
north of the Great Miami
River, as changed & estab-
lished by the Sixty fifth
General Assembly of Ohio
April 11th 1833. as follows to wit:

That the boundary
line between Logan & Shelby
counties be changed so as
to run parallel with sec-
tion lines, instead of ang-
ling across them as it now
does to wit:

That said line,
be located on the North &
South center line of section
number thirty six, Township

six South, range seven east
and sections one, twelve,
thirteen, twenty four & twenty
five, thirty six. of township
seven South, range seven
east, to the Greenville Treaty
line, thence with it west
to the center of the east half
of section twenty nine. Town-
ship two, Range eight east
thence with the line throu-
gh the center of the east
half of said section num-
ber twenty nine & section
number thirty two, Range
eight east & sections five,
eight, seventeen & twenty, to
the Great Miami River."

See: Laws of Ohio. Vol 80. 1855.
Page 324.

Chains

Begin survey at corner
of sections 16, 17, 20, + 21. Township
N^o 1 Range N^o 8 east of first
meridian at N.

Witness a W. Ch. 40 in diam.
Bears South $25\frac{1}{4}$ degrees east $29\frac{1}{2}$
links distant, and a crooked
sugar bears South $79\frac{1}{2}$ degrees
east, 104 links distant. There
is also a Fowler's stone at
this corner.

chains

South on random line bet
sections 20 + 21 S. $1\frac{1}{2}$ ° E.

3214

Centre of Miami Valley Joint
Pike. Bears N 55 ° W

4187

Strike 9 links west of post
on north bank of Great
Miami River, corner to Sec's
20 + 21 at O. Where a W Hick-
ory 20 in. diam. bears N $57\frac{1}{2}$ ° E.
 $80\frac{3}{4}$ links distant, and an Ash
18 in. diam. bears S $36\frac{1}{4}$ ° W, $111\frac{1}{2}$
links distant:

Corrected course of line bears
S. $1^{\circ}37'$ E.

Returned to corner of Sec's

Chains. 16. 17. 20 + 21 at N.

West in road on line bet
secs 17 + 20. S 87 1/2° W.

20⁰⁰

Set post on County line for
monument at N° 14.

Road turns south here

30⁶⁶

Boulder stone at William John-
ston's north east corner and B
F Allebaugh's north west corner.

40⁰⁰

William Johnston's west line.

43¹⁰

Centre of Miami Valley Joint
pike.

46⁴⁶

Centre of North abut of Miami
river bridge.

Traveled back to County line.

South on County line S 1° 37' E
Boulder stone on river bank
on county line 10 feet north
of average waters edge at N° 15

Returned to corner of Sec's
16. 17. 20 + 21 at N.

North in road on line
between secs 16 + 17 N. 1 3/4° W.

40²⁰

Centre of 1/4 Sec. line fence

INDEXED ON MAP
1884 1D-5

60²⁷

Centre of 40 acre line fence.

80⁴⁴

Corner of sec's 8, 9, 16 & 17, at M.

Went on random line bet sec's
8 & 17 S 87 $\frac{3}{4}$ ° W

20⁰⁰

Set temporary post for county
line at N^o 13.

40⁰⁴

Fell 38 links south of $\frac{1}{4}$ corner
stone at S. Correct bearing of
line S 88 $\frac{1}{4}$ ° W.

Returned to temporary post at
county line and ^{moved} it 19 links
north and 2 links west to
intersection of county line
with section line, for mon-
ument at N^o 13. and took
the following witness trees:
A Beech 18 in diam bears N
4 $\frac{1}{4}$ ° W. 24 $\frac{1}{2}$ links distant and
an R. Oak 8 in diam, bears
S. 48 $\frac{1}{2}$ ° E. 3 $\frac{1}{2}$ links distant.
Traveled on east to corner
of sec's 8, 9, 16 & 17 at M.

North in road on line bet
sec's 8 & 9. N. 1 $\frac{1}{2}$ ° E.

2485

Centre of Bellefontaine - Sidney
pike bears S 85° W

4020

Struck 2 links west of stone
at $\frac{1}{4}$ corner

6030

Struck 1 link west of 40 acre
corner

8024

Struck 3 links west of corner stone
at cor of Sec's 4, 5, 8 & 9. at L.

1979

Went on line bet sec's 5 & 8
Fell 22 links south of 40 acre
corner stone set by H. C. Moore
at county line

3953

Fell 41 links south of $\frac{1}{4}$ corner stone
at 7. Correct course of line
S 88° W.

Traveled back to county line
and set post for monument
 $2\frac{1}{2}$ links east + $1\frac{1}{2}$ links north
of stone, at intersection of
county & section lines at
No 12. Returned to corner
of sec's 4, 5, 8 & 9 at L

North in road on line bet
Sec's 4 & 5 - N 13 $\frac{1}{4}$ ° W.

INDEXED ON MAP
1884 1D-7

40¹⁷

Struck 1 1/2 links east of 1/4 cor. stone: witnessed by a Lyrus 24 in diam bearing N. 49 1/4° W. 75 1/4 links distant

57⁵⁰

Road running west.

80³⁴

Struck 3 links west of stone, cor to Secs 4 + 5 Tp 1. Q. S. E. Secs 32 + 33 Tp 2 Q. S. E. at. K.

Witness a R Oak 26 in diam. bears S 81 1/4° W 64 3/4 links distant
A road runs East from this corner.

West on line bet Secs 5 + 32 Tps 1 + 2 Q. S. East. S 88 1/4° W

20⁰⁰

Set temporary post for monument on county line at N° 11

40²⁴

Strike 1 1/2 links south of 1/4 corner stone bet Secs 5 + 32 at Q. Returned to County line + moved temporary post for monument 12 links west + 3/4 of a link north to point of inter-section of county + sec lines at N° 11, and took the following witness trees
an Ash 20 in. diam. bears

MISSOURI MAP
S-DI
1884 10-8

S $68\frac{3}{4}^{\circ}$ N 156 $\frac{3}{4}$ links distant
and a Jack Oak 12 in diam
Leans S. $45\frac{1}{2}^{\circ}$ E. 42 $\frac{3}{4}$ links distant.
Traveled east to corner of sec's
4, 5, 32 + 33 at, K.

North in road on line bet
sec's 32 + 33.

4047

Centre of $\frac{1}{4}$ sec line fence
Geo K Hill who was present
at a previous survey says:
the corner was opposite the
centre of this fence.

8068

Full 19 links west of stone,
corner to sec's 28, 29, 32 + 33. in
centre of Stewart + Shroyer
pike at J. where a forked
Cherry 8 in diam. Leans S $52\frac{1}{2}^{\circ}$ W
 $60\frac{1}{2}$ links distant and an
Elm 24 in. diam. ^{Leans} N $30\frac{3}{4}^{\circ}$ W
 $178\frac{1}{2}$ links distant. Correct bear-
ing of line N. $1\frac{1}{4}^{\circ}$ W.

INDEXED ON MAP
1084 1D-9

West end line in pike bet
sec's 29 + 32 S. $88\frac{3}{4}^{\circ}$ W.

2049

Stone in centre of pike on

county line at N^o 10

25³⁶

Supposed location of old county line.

35³⁵

Centre of line fence on the south - bet Piper + Lefevre

40³⁸

Corner in pike at P.

Returned to corner of Sec's 28, 29, 32 + 33 at J.

North in road on line bet Sec's 28 + 29 -

40⁰⁶

South east corner of Grave yard

80¹⁶

Strike 39 1/2 links east of corner stone at cor. of sec's 20, 21, 28 + 29 at I in centre of Boundary pike. Bearing of line N 20^o West on line between Sec's 20 + 29 S 87 3/4^o W

6.46

West end of fractional Sec 20 in pike on Greenville Treaty Line

West in pike on Greenville Treaty line bet Sec 29. Tp 2. R. 8. E + Sec 36 Tp. 7. S. R. 7 E. Treaty line bears S 80 1/2 west.

INDEXED ON MAP
1884 15-10

1.79

Corner Stone in pike at east angle of county line and at southwest cor of fractional east half of sec 36 at N^o 8.

13.83

West ang in county line in pike on treaty line bet sees 29 + 36 at N^o 9.

Feb 5. 1884

Traveled to corner of sees 31 + 36 at intersection of Greenville Treaty line with Range line bet Ranges 7 + 8 at H

21¹⁹

North on Range line in road bet sees 31 + 36

Fell 1 link west of corner to sees 25, 30, 31, + 36. at G. Bearing of line N. 1 1/2° W.

40²⁵

Continued north in road on Range line bet sees 25 + 30

Struck 3 1/2 links east of 1/4 cor stone

42⁶⁵

Centre of Brandy Wine Creek

60³⁸

Struck 12 links east of 40 acre

corner stone

8050

Struck 8 links east of stone corner to sec's 19, 24, 25, & 30, at F. Bearing of line N. 125° W.

Continued north in road on range line bet sec's 24 & 19

2016

40 Acres corner

4023

Centre of Trout & Smith pike running east and west

8050

Struck 7 links east of corner to sec's 13, 18, 19 & 24 at E. Witness an Ash 24 in. diam. North 5 links distant Bearing of line N 1° 25' W

Continued north in road on range line bet sec's 13 & 18.

2003

Centre of road running west

8034

Struck corner stone in Duckworth & Baughman pike in south end of Frank & Pence pike, being corner to sec's 7, 12, 13 & 18 at D.

INDEXED ON MAP
1904 15-12

Line bears N. 174° W.

Continued North in pike
on range line between
Secs 7 + 12

1137

Gordon Baughman's south line

4020

1/4 Sec line

8040

Full 12 links west of stone
in centre of pike at con.
to secs 1, 6, 7 + 12. at C. Line
bears N. 172° W.

Continued North in pike
on range line bet secs 1 + 6

2007

Centre of 40 acre line fence

4013

Full 10 links west of corner

6019

Centre of 40 acre line fence

8026

Full 4 links west of corner
to secs 1, 6, 31 + 36. Tps 6 + 7 S.
and Ranges 7 + 8 at B.

Bearing of line N. 172° W.

Cont'd north in pike
on range line bet secs
31 + 36 N. 172° W.

2012

Centre of 40 acre line fence

INDEXED ON MAP

40¹⁹

Centre of 1/4 Sec line fence
Struck 7 links west of cor.
at A

80⁵⁰

West on line bet sec's
25 + 36. T^o 6. South Range 7 east
S 88 3/4° W

14⁵⁰

Old Co line and South
east cor. of Auglaizees.

15-16

Line fence bet David
Shopstall + James Baggs.

35-72

Set temporary 1/4 Sec post
for Co. lines

Original witness trees at
this cor. were a Pigeon Oak
12 in diam. Bearing of 69° W.
15 links distant + a swamp
Ash. 8 in diam. Bearing
of 35° W. 26 links distant
Both trees gone.

55-66

Struck 26 links south of
40 acre corner.

A little further on is
Tuckinippi creek which
is too deep to cross on
account of freshet now.

Returned to temporary post

at county line & moved
it $16\frac{3}{4}$ links north & 47
links east at No 1 & took
the following witness trees

A water Beech 4 in diam.
bearing S 66° W 78 links distant
and a swamp Ash 11 in
diam bearing N $70\frac{1}{2}^{\circ}$ W. 78
links distant

South on county line
through sec. 36.

20¹⁰

Line fence crosses.

40³⁰

Line fence crosses.

52⁰⁰

Line fence running west.

60⁴¹

Line fence running east.

80⁴⁴

Boulder, corner stone at
No 2. $\frac{1}{4}$ sec cor bet Sec. 36
T. 6. S. R. 7 E. and sec 1. T. 7. S.
R. 7 E. Stone was set by
Jonathan Counts on east
and west road. Witness
trees gone.

Bearing of line S $1^{\circ} 23'$ E.

Continued south on county

INDEXED ONLY
1884 P-15

line through Sec 1.

2011

40 acre cor. stone.

40^{RR}

1/4 sec. line fence crosses

60³³

40 acre corner stone.

80⁴⁶

Small Bolder in east & west road possibly intended for 1/4 cor. bet Secs 1 & 12 at N° 3. Here the original witness trees are also gone.

Traveled west to corner of Secs 1, 2, 11 & 12 corner stone at C.

East in road on line bet Secs 1 & 12

40²⁸

Strike 2. Links south of stone at county line.

75⁷⁸

Corner to sec's 1, 6, 7 & 12. at C. The original field notes length of line. is west half 4000 chains & east half 35.18 chs. which length 75.18 chs. The excess of 20 links is divided proportional to the lengths of the east & west

91-D-4891
1884-16

halves of the line

This fixes the county line 40.32 chains east of the west line & 35.46 chains west of the east line of the section. Returned

to county line and planted fowlder at 1/4 corner on Co. line. 2 links north & 4 links east of stone already there at No 3. Bearing of line S. 1° 29' E. July 18. 1884.

Continued south on county line through sec. 12.

1/4 Sec line.

Line runs west.

Line running east.

Centre of Stephenson pike at No 4. No corner marked & witness trees gone. Set

temporary posts on north & south sides of pike, each 17 links from centre. Travelled west to cor. of Secs 11. 12 13 & 14 at D.

40.20
54.65
69.03
80.40

INDEXED ON MAP
1884 10-17

4038

East on line bet secs 12 & 13
Intersect temporary posts at
county line on Stephenson
pike at No 4.

75-59

Corner of secs 7.12.13 & 18 at D.
The original field notes
give the east half of the line
35.21 chains & the west half
40 chains, whole length 75.21
chains. The excess of 38 links
is divided proportionally bet
the east & west halves of the
line. Placing the county
line 40.20 chas east of the
west line & 35.39 west of
the east line. Returned
to co. line & moved posts
38 links west to true point
of intersection at No 4. Bear-
ing of line S. 1° 33' E.

Continued South on Co. line
through sec 13 S. 1° 8' E.

2042

2200

4025

Line running east-
Line running west.
Supposed 1/4 sec line

INDEXED ON MAP
1004 1D-10

6033

Centre of road running east & west

8025

Strike $\frac{1}{4}$ corner post bit secs 13 & 24, on county line at point for monument at No 5

Cont'd south on co. line through sec 24.

4025

Centre of road running east & west

6025

40 acre line.

8025

Strike $\frac{1}{4}$ cor post bit secs 24 & 25 on co line at point for monument at No 6 Bearing of line S. 1° E

Continued south on county line through sec 25.

2007

40 acre line running east

4020

Strike $\frac{1}{4}$ corner stone in centre of sec.

3720

Line running west

8045

Strike $\frac{1}{4}$ cor stone bit secs 25 & 36 at point for monument at No 7. Bearing of line S. 1° E.

Continued south on county line through sec 36. Run

INDEXED ON MAP
1884 D-19

1030 / Creek crosses.

1033- Line runs east.

2665- Strike stone in pile on Greenville Treaty line at No. 8. Bearing of line S 1 1/2° E

All the courses given are at the magnetic bearing.

Feb 9th 1884.

The line is marked by sand stone monuments four feet long & twelve inches sq. The tops are dressed pyramidal with the apex 6 in. high, and the four sides are dressed smooth twelve inches down, making each face 1 ft. sq. The other part thirty in. is left rough & buried in the ground. The monuments are invariably planted on the County line and at the inter-sections of the county line

INDEXED ON MAP
1884 1D-20

with the section lines except where there is a road on section line & at the south end at the river where they are planted twenty five feet either north or south of the section lines.

All the monuments except the one at the north end of the county line, were set by & in the presence of J. A. Buchanan County Suror of Logan Co W. H. Pampel, Dep. Co. Suror. Shelby Co E Cantwell derrick Boss & Kellis Johnson and Jas Stewart helpers, last two named named men are colored July 15th 84

Set monument N^o 15-20 feet north of average waters edge of Great Miami River and 15 feet north of stone on line bet lands of J A Pool & B F Allbaugh The monument

has the following inscriptions on the four sides North side S. 20. T. 1. R. 8.

South side 1884. East side I. West side S

Set monument No 14 on county line 25 feet north of line between Sec's 17 & 20 T. 1. R. 8. E. with the following inscriptions North side S. 17. T. 1. R. 8. South side S. 20. 1884 E side I. West side S.

July 16th 1884 Set monument No 13 at intersection of County line with line bet Secs 8 & 17. Inscriptions North side S. 8. T. 1. R. 8. South side S. 17. 1884 E side I. West side S

Monument No 12 Set at intersection of county line with line bet sec's 5 & 8 Inscribed as follows North side S. 5. T. 1. R. 8. South side S. 8. 1884. E side I. & West side S.

Set monument No 11 at intersection of Co. line.

INDEXED ON MAP

with township line between
secs 5 + 32 Tps 1 + 2. Descrip-

tions. North side S. 32. T. 2. R. 8. ✓

South side S. 5. T. 1. R. 8. 1884

East side I. West side S.

Set monument No 10
on county line 25 feet
north of line between
secs 29 + 32 on Stewart pike

Descriptions North side

S. 29. T. 2. R. 8. South side S. 32. 1884

East side I. West side S.

There is also a boulder at
the corner in pike.

July 17. 1884.

Set monument No 9 on
county line 20 feet south
of Greenville Treaty line. Des.

North. side S. 36. T. 7. R. 7. South

side S. 29. T. 2. R. 8. 1884 E side I

W. side S.

Set monument No 8
on county line 20 feet north
of Greenville Treaty line bet
secs 29 Tps 2 R 8 + Sec 36 Tps 7 S. R. 7. E.

Descriptions North side

INDEXED ON MAP
1884 1D-23

S 36. T. 7. R. 7. South side S 29. T. 2. R. 8, ¹⁸⁸⁴
East side L. west side S

There is also a boulder at the corner in pike.

At No 7 the corner stone already set was removed & monument set in its place at intersection of Co line with line bet secs 25 & 36. Description North side S 25. T. 7. R. 7 South side S. 36. 1884. East side L. west side S.

Monument No 6 was set at the intersection of the Co. line with the line bet secs 24 & 25. Description as follows:- North side S. 24. T. 7. R. 7. South side S. 25. 1884. East side L. west side S.

Monument No 5 was set at the intersection of the county line with the line between Sec's 13 & 24. Description North side S. 13. T. 7. R. 7. South side S. 24. 1884. East side L. West side S

Set monument No 4 on Co. line 25 feet north of line bet secs 12 - 13. Descriptions as follows, to wit: - on the north side S12 T7 R7 on the south side S 13 1884. On the east side L. & on the west side S.

July 1884 Set monument No 3 on Co. line 25 feet north of of line bet secs 1 + 12. Des. as follows. north side S. 1. T. 7. R. 7. South side S 12. 1884. E. side L. & west side S. Stone at corner

Set monument No 2 on Co. line 25 feet south of Tp. line between secs 1. T7 S R7 E & Sec. 36. T. 6. S. R. 7. E. with inscriptions as follows. On north side S. 36. T. 6. R. 7. On south side S 1. T. 7. R. 7. 1884. on east side L. and on west side S. Stone.

Adjourned to meet hereafter with the co. suor. of Auglaize Co or his rep.

INDEXED ON MAP
1884 1D-25

representative to set the
monument at the north
end of the twenty line
between Shelby & Logan less
on the south line of Auglaize

Aug 25th 1884

By a previous appointment
Samil Craig surveyor appoint
ed by Auglaize les. met
this day with A. H. Bushan-
an & W. W. Pampel to set
monument bet Auglaize
Logan & Shelby les. W. F.
Craig son of Samil Craig
was also present

A careful search was
made to discover if pos-
sible remains of the
original witness trees, no
traces being visible above
ground, except a slight
unevenness of the ground
which was examined &
found to contain a hole
lined with oak bark.
The tap root having

INDEXED ON MAP

entirely disappeared. From this the course & distance was measured, to where the corner should be at the post & from this point the course & distance was also measured to where the Ash should have stood & the ground dug open showed remains of ash roots. This was regarded sufficient evidence to locate the corner & monument. In making the excavation for the monument we were rewarded with additional evidence and positive proof of the corner at this place by finding the points of two old posts, one having the appearance of being thirty or forty years old & the other one half that age a hole in which the original corner post evidently stood was plain to be

seen also. all of these
marks were about 18 in
below the surface of the
ground & within an area
of one square foot

Set monument No 1
at intersection of Co. line.
Set Logan & Shelby & sec. line
& county line, set Secs 25 & 36
T. 6. S. R. 7. E. Set Anglaize Logan
& Shelby. Inscription on
North side Anglaize S. 25. T. 6. R. 7.
On South side County line
S. 36. 1884 On East side Logan &
on west side Shelby.

Dec 19-84 ~~S. W. P.~~ Currier Dep. Co Surv. Shelby Co. O.

Dec 19-84 S. A. Buchanan Co Surv. Logan Co. O.

Co. Surv. Shelby Co

COST BILL

For Survey of Line between -

— LOGAN & SHELBY CO'S. —

	J. C. Wonders, Chairman	10d	20	00	
	Chiff Cookston	" 10d	20	00	
	C. H. Buchanan Flag	10d	20	00	
	Everett Johnston	" 4d	8	00	
	C. C. Cookston	" 6d	12	00	
	Os Marquis Ax	10d	20	00	
	Kellis Jackson Teamster				
	deliv & setting monuments		28	80	
	Jas Stewart, laborer, do.		8	00	
	E. Cantwell Derrick boss do		22	00	
	Same use of derrick		3	00	
	Cantwell & Stillwell Monuments		120	00	
	Auditor state. Cop. orig. field notes.		6	10	288 10
Dec 27, 1883.	S. A. Buchannan Survey				
to Jan 28, 1884	Making preliminary plats & records		50	75	
Jan 5	Trip to Sidney with Logan Co Aud		4	30	
Jan. 16 to 19	Surveying		20	00	
" 22 to 23	Plating field notes Office		8	00	
" 24 to 31	" " " " "		24	00	
Feb 4 to 9	Surveying		30	00	
" 11 to 12	Office work self and asst.		13	00	
" 13	" " " " "		2	50	
" 21 to 22	Field work locating buildings		10	00	
" 27 to Mar 6.	Maps & Schedule Auditor		37	50	
Mar 23 to 25	Schedule for Shelby Co Audt		11	00	
			211	05	288 10

INDEXED ON MAP
1884 ID-29

	Ant. Prot. Ford.	211	05	288	10
July 15 th 19	Setting monuments	23	00		
Aug 25-	"	5	00		
Dec 1 st 19	Making plat & copying field notes	17	80		
	Making & Copying report.	15	00	271	80
	D.W. Pampel Surveyor				
Feb	Surveying	30	00		
4.5.6.7.8.9	Surveying				
15.16.18.19.20	Copying records	25	00		
21.22	Locating buildings &c	10	00		
24.25.26.27.28	Making plats & duplicate descrip's	25	00		
March 5	Went to Bellef to compare notes	5	00		
18.19.20.21.22	Making plats & duplicate descrip's	25	00		
23.24	Making plats & specific. for monuments	10	00		
25.26	Making plats & duplicate descrip's	10	00		
28.31	Making duplicate of land to transfer to Logans lco	10	00		
July	Setting monuments	20	00		
15.16.17.18	"	5	00		
Aug 25-	"				
Oct. 10.11.12.18.19.24	Making report	30	00		
Nov 12.13.14.15.17.18.19	Making report & copy	35	00	240	00
	Total cost of work.			799	95

The above counties are each to pay one half the entire expense of survey

Amount already paid by Logans Co 488 15

Amount ~~not~~ paid by Logans lco 88 17 1/2

Amount due from Shelby lco 399 97 1/2

799 95

INDEXED ON MAP
1004 10-30

The above bills allowed and
approved by

R. P. Lukens
J. M. Putnam } Commissioners
of
Logan County.

John Linker
John E. Bush } Commissioners
of
Shelby County.

line through Sec 1.

2011

40 acre cor. stone.

40^{RR}

$\frac{1}{4}$ sec. line fence crosses

60³³

40 acre corner stone.

80⁴⁶

Small Bolder in east & west road possibly intended for $\frac{1}{4}$ cor. bet Secs 1 & 12 at N^o 3. Now the original witness trees are also gone.

Traveled west to corner of Secs 1, 2, 11 & 12 corner stone at C.

East in road on line bet Secs 1 & 12

40²⁸

Strike 2. Links south of stone at county line.

75⁷⁸

Corner to sec's 1, 6, 7 & 12. at C. The original field notes length of line. is west half 4000 chains & east half 35.18 chs. which length 75.18 chs. The excess of 20 links is divided proportional to the lengths of the east & west

halves of the line

This fixes the county line 40.32 chains east of the west line & 35.46 chains west of the east line of the section. Returned

to county line and planted fowlder at 1/4 corner on Co. line. 2 links north & 4 links east of stone already there at No 3. Bearing of line S. 1° 29' E. July 18. 1884.

Continued south on county line through sec. 12.

1/4 Sec line.

Line runs west.

Line running east.

Centre of Stephenson pike at No 4. No corner marked & witness trees gone. Set

temporary posts on north & south sides of pike, each 17 links from centre. Travelled west to cor. of Secs 11. 12 13 & 14 at D.

40.20
54.65
69.03
80.40

INDEXED ON MAP
1884 10-17

4038

East on line bet secs 12 & 13
Intersect temporary posts at
county line on Stephenson
pike at No 4.

75-59

Corner of secs 7.12.13 & 18 at D.
The original field notes
give the east half of the line
35.21 chains & the west half
40 chains, whole length 75.21
chains. The excess of 38 links
is divided proportionally bet
the east & west halves of the
line. Placing the county
line 40.20 chas east of the
west line & 35.39 west of
the east line. Returned
to co. line & moved posts
38 links west to true point
of intersection at No 4. Bear-
ing of line S. 1° 33' E.

Continued South on Co. line
through sec 13 S. 1° 8' E.

2042

2200

4025

Line running east-
Line running west.
Supposed 1/4 sec line

INDEXED ON MAP
1004 1D-10

6033

Centre of road running east
& west

8025

Strike $\frac{1}{4}$ corner post bit
secs 13 & 24, on county line
at point for monument at No 5

Cont'd south on co. line
through sec 24.

4025

Centre of road running east & west

6025

40 acre line.

8025

Strike $\frac{1}{4}$ cor post bit secs 24 & 25
on co line at point for mon-
ument at No 6 Bearing of line
S. 1° E

Continued south on county
line through sec 25.

2007

40 acre line running east

4020

Strike $\frac{1}{4}$ corner stone in centre of sec.

3720

Line running west

8045

Strike $\frac{1}{4}$ cor stone bit secs 25 & 36
at point for monument at
No 7. Bearing of line S. 1° E.

Continued south on county
line through sec 36. Run

INDEXED ON MAP
1884 D-19

1030 / Creek crosses.

1033- Line runs east.

2665- Strike stone in pile on Greenville Treaty line at No. 8. Bearing of line S 1 1/2° E

All the courses given are at the magnetic bearing.

Feb 9 1884.

The line is marked by sand stone monuments four feet long & twelve inches sq. The tops are dressed pyramidal with the apex 6 in. high, and the four sides are dressed smooth twelve inches down, making each face 1 ft. sq. The other part thirty in. is left rough & buried in the ground. The monuments are invariably planted on the County line and at the inter-sections of the county line

with the section lines except where there is a road on section line & at the south end at the river where they are planted twenty five feet either north or south of the section lines.

All the monuments except the one at the north end of the county line, were set by & in the presence of J. A. Buchanan County Suror of Logan Co W. H. Pampel, Dep. Co. Suror. Shelby Co E Cantwell derrick Boss & Kellis Johnson and Jas Stewart helpers, last two named named men are colored July 15th 84

Set monument N^o 15-20 feet north of average waters edge of Great Miami River and 15 feet north of stone on line bet lands of J A Pool & B F Allbaugh The monument

has the following inscriptions on the four sides North side S. 20. T. 1. R. 8.

South side 1884. East side I. West side S

Set monument No 14 on county line 25 feet north of line between Sec's 17 & 20 T. 1. R. 8. E. with the following inscriptions North side S. 17. T. 1. R. 8. South side S. 20. 1884 E side I. West side S.

July 16th 1884 Set monument No 13 at intersection of County line with line bet Secs 8 & 17. Inscriptions North side S. 8. T. 1. R. 8. South side S. 17. 1884 E side I. West side S

Monument No 12 Set at intersection of county line with line bet sec's 5 & 8 Inscribed as follows North side S. 5. T. 1. R. 8. South side S. 8. 1884. E side I. & West side S.

Set monument No 11 at intersection of Co. line.

INDEXED ON MAP

with township line between
secs 5 + 32 Tps 1 + 2. Descrip-

tions. North side S. 32. T. 2. R. 8. ✓

South side S. 5. T. 1. R. 8. 1884

East side I. West side S.

Set monument No 10
on county line 25 feet
north of line between
secs 29 + 32 on Stewart pike

Descriptions North side

S. 29. T. 2. R. 8. South side S. 32. 1884

East side I. West side S.

There is also a bowlder at
the corner in pike.

July 17. 1884.

Set monument No 9 on
county line 20 feet south
of Greenville Treaty line. Des.

North. side S. 36. T. 7. R. 7. South

side S. 29. T. 2. R. 8. 1884 E side I

W. side S.

Set monument No 8
on county line 20 feet north
of Greenville Treaty line bet
secs 29 Tps 2 R 8 + Sec 36 Tps 7 S. R. 7 E.

Descriptions North side

INDEXED ON MAP
1884 1D-23

S 36. T. 7. R. 7. South side S 29. T. 2. R. 8, ¹⁸⁸⁴
East side L. west side S

There is also a boulder at the corner in pike.

At No 7 the corner stone already set was removed & monument set in its place at intersection of Co line with line bet secs 25 & 36. Description North side S 25. T. 7. R. 7 South side S. 36. 1884. East side L. west side S.

Monument No 6 was set at the intersection of the Co. line with the line bet secs 24 & 25. Description as follows:- North side S. 24. T. 7. R. 7. South side S. 25. 1884. East side L. west side S.

Monument No 5 was set at the intersection of the county line with the line between Sec's 13 & 24. Description North side S. 13. T. 7. R. 7. South side S. 24. 1884. East side L. West side S

Set monument No 4 on Co. line 25 feet north of line bet secs 12 - 13. Descriptions as follows, to wit: - on the north side S12 T7 R7 on the south side S 13 1884. On the east side L. & on the west side S.

July 1884 Set monument No 3 on Co. line 25 feet north of of line bet secs 1 + 12. Des. as follows. north side S. 1. T. 7. R. 7. South side S 12. 1884. E. side L. & west side S. Stone at corner

Set monument No 2 on Co. line 25 feet south of Tp. line between secs 1. T7 S R7 E & Sec. 36. T6. S. R7 E. with inscriptions as follows. On north side S. 36. T. 6. R. 7. On south side S 1. T 7. R. 7. 1884. on east side L. and on west side S. Stone.

Adjourned to meet hereafter with the co. suor. of Auglaize Co or his rep.

INDEXED ON MAP
1884 1D-25

representative to set the
monument at the north
end of the twenty line
between Shelby & Logan less
on the south line of Auglaize

Aug 25th 1884

By a previous appointment
Samil Craig surveyor appoint
ed by Auglaize les. met
this day with A. H. Bushan-
an & W. W. Pampel to set
monument bet Auglaize
Logan & Shelby les. W. F.
Craig son of Samil Craig
was also present

A careful search was
made to discover if pos-
sible remains of the
original witness trees, no
traces being visible above
ground, except a slight
unevenness of the ground
which was examined &
found to contain a hole
lined with oak bark.
The tap root having

entirely disappeared. From this the course & distance was measured, to where the corner should be at the post & from this point the course & distance was also measured to where the Ash should have stood & the ground dug open showed remains of ash roots. This was regarded sufficient evidence to locate the corner & monument. In making the excavation for the monument we were rewarded with additional evidence and positive proof of the corner at this place by finding the points of two old posts, one having the appearance of being thirty or forty years old & the other one half that age a hole in which the original corner post evidently stood was plain to be

seen also. all of these marks were about 18 in below the surface of the ground & within an area of one square foot

Set monument No 1 at intersection of Co. line. Set Logan & Shelby & sec. line & county line, set Secs 25 & 36 T. 6. S. R. 7. E. Set Anglaize Logan & Shelby. Inscription on north side Anglaize S. 25. T. 6. R. 7. On south side County line S. 36. 1884 On East side Logan & on west side Shelby.

Dec 19-84 ~~S. W. P. Currier~~ Dep. Co Surv. Shelby Co. O.

Dec 19-84 S. A. Buchanan Co Surv. Logan Co. O.

Co. Surv. Shelby Co

COST BILL

For Survey of Line between -

— LOGAN & SHELBY CO'S. —

	J. C. Wonders, Chairman	10d	20	00	
	Chiff Cookston	" 10d	20	00	
	C. H. Buchanan Flag	10d	20	00	
	Everett Johnston	" 4d	8	00	
	C. C. Cookston	" 6d	12	00	
	Os Marquis Ax	10d	20	00	
	Kellis Jackson Teamster				
	deliv & setting monuments		28	80	
	Jas Stewart, laborer, do.		8	00	
	E. Cantwell Derrick boss do		22	00	
	Same use of derrick		3	00	
	Cantwell & Stillwell Monuments		120	00	
	Auditor state. Cop. orig. field notes.		6	10	288 10
Dec 27, 1883.	S. A. Buchannan Survey				
to Jan 28, 1884	Making preliminary plats & records		50	75	
Jan 5	Trip to Sidney with Logan Co Aud		4	30	
Jan. 16 to 19	Surveying		20	00	
" 22 to 23	Plating field notes Office		8	00	
" 24 to 31	" " " " "		24	00	
Feb 4 to 9	Surveying		30	00	
" 11 to 12	Office work self and asst.		13	00	
" 13	" " " " "		2	50	
" 21 to 22	Field work locating buildings		10	00	
" 27 to Mar 6.	Maps & Schedule Auditor		37	50	
Mar 23 to 25	Schedule for Shelby Co Audt		11	00	
			211	05	288 10

INDEXED ON MAP
1884 ID-29

	Ant. Prot. Ford.	211	05	288	10
July 15 th 19	Setting monuments	23	00		
Aug 2 nd 19	"	5	00		
Dec 1 st 19	Making plat & copying field notes	17	80		
	Making & Copying report.	15	00	271	80
	D.W. Pampel Surveyor				
Feb 4. 5. 6. 7. 8. 9	Surveying	30	00		
15. 16. 18. 19. 20	Copying records	25	00		
21. 22	Locating buildings &c	10	00		
24. 25. 26. 27. 28	Making plats & duplicate descrip's	25	00		
March 5	Went to Bellef to compare notes	5	00		
18. 19. 20. 21. 22	Making plats & duplicate descrip's	25	00		
23. 24	Making plats & specific. for monuments	10	00		
25. 26	Making plats & duplicate descrip's	10	00		
28. 31	Making duplicate of land to transfer to Logans lco	10	00		
July 15. 16. 17. 18	Setting monuments	20	00		
Aug 2 nd 19	" "	5	00		
Oct. 10. 11. 16. 18. 19. 24	Making report	30	00		
Nov 12. 13. 14. 15. 17. 18. 19	Making report & copy	35	00	240	00
	Total cost of work.			799	95

The above counties are each to pay one half the entire expense of survey

Amount already paid by Logans Co 488 15

Amount ~~not~~ paid by Logans lco 88 17 1/2

Amount due from Shelby lco 399 97 1/2

799 95

INDEXED ON MAP
1004 10-30

The above bills allowed and
approved by

R. Lukens
J. M. Putnam } Commissioners
of
Logan County.

John Linker
John E. Bush } Commissioners
of
Shelby County.