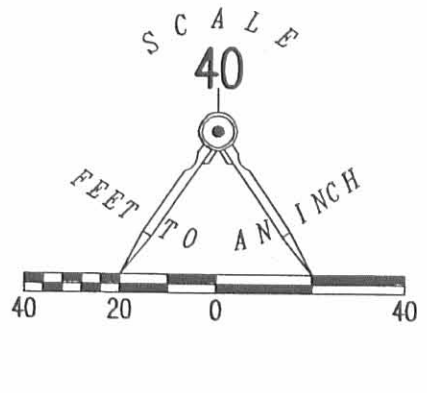
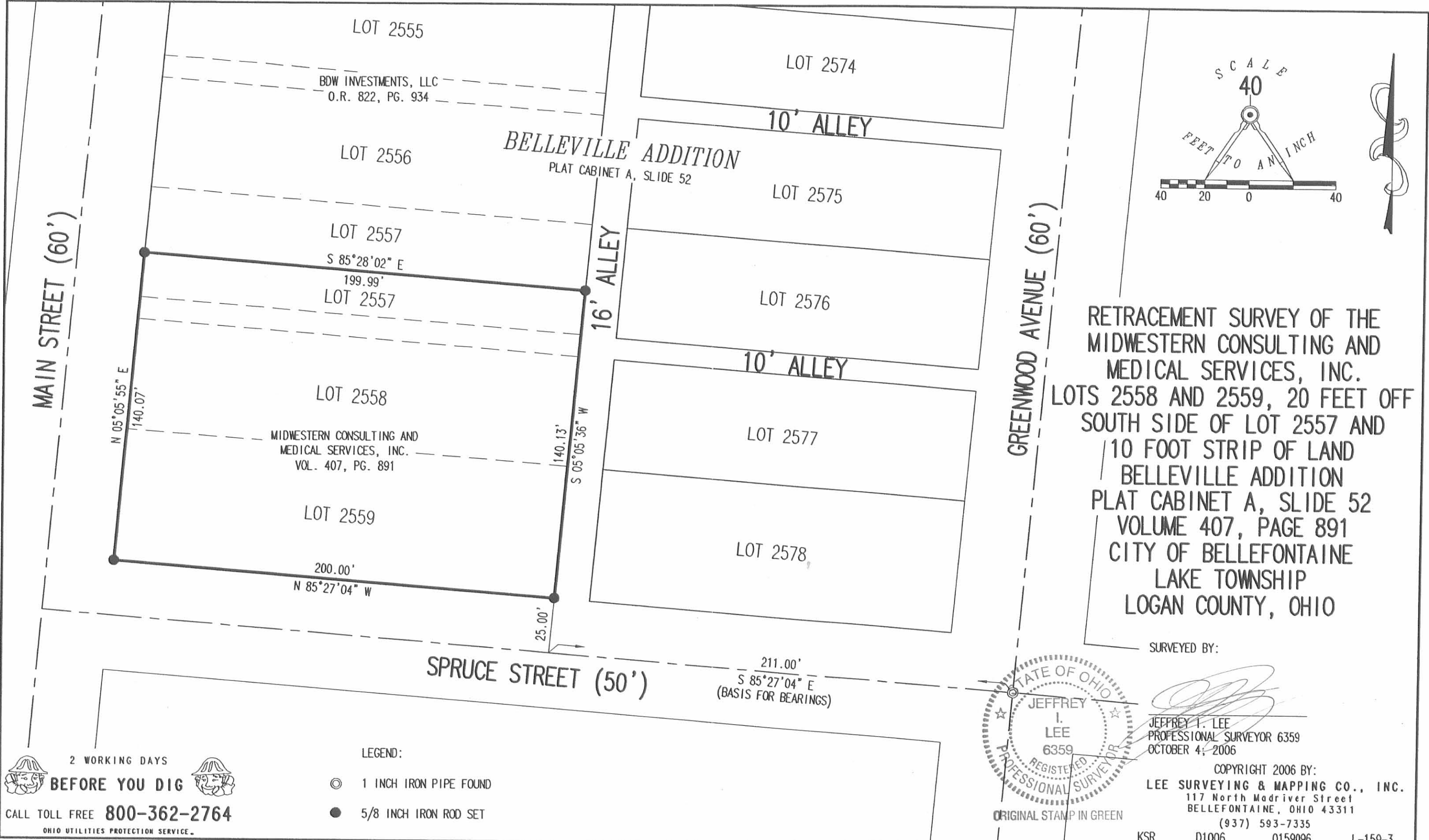
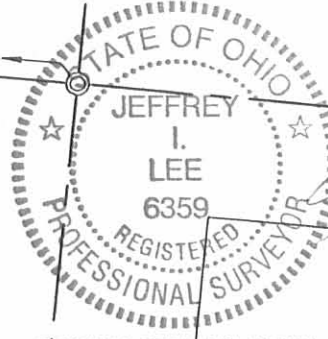


REC'D 10-10-06 SMM/OK



RETRACEMENT SURVEY OF THE
MIDWESTERN CONSULTING AND
MEDICAL SERVICES, INC.
LOTS 2558 AND 2559, 20 FEET OFF
SOUTH SIDE OF LOT 2557 AND
10 FOOT STRIP OF LAND
BELLEVILLE ADDITION
PLAT CABINET A, SLIDE 52
VOLUME 407, PAGE 891
CITY OF BELLEFONTAINE
LAKE TOWNSHIP
LOGAN COUNTY, OHIO

SURVEYED BY:



[Signature]
JEFFREY I. LEE
PROFESSIONAL SURVEYOR 6359
OCTOBER 4, 2006

COPYRIGHT 2006 BY:
LEE SURVEYING & MAPPING CO., INC.
117 North Madriver Street
BELLEFONTAINE, OHIO 43311
(937) 593-7335

ORIGINAL STAMP IN GREEN

KSR D1006 0159096 L-159-3

2 WORKING DAYS
BEFORE YOU DIG
CALL TOLL FREE **800-362-2764**
OHIO UTILITIES PROTECTION SERVICE

LEGEND:
⊙ 1 INCH IRON PIPE FOUND
● 5/8 INCH IRON ROD SET

INDEXED ON MAP
9555 IP