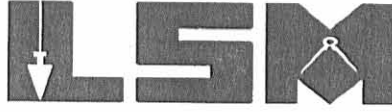


1 REC'D 5-27-05 SMM OK

Lee Surveying and Mapping Co., Inc.

Land Surveys • Topography • Subdivisions • Construction Layout

117 N. Madriver St.
Bellefontaine OH 43311



Phone: (937) 593-7335
Fax: (937) 593-7444

1975-2005 - 30 YEARS OF EXCELLENCE

**CALVIN
0.066 ACRE**

Lying in Section 35, Town 4, Range 14, City of Bellefontaine, Lake Township, Logan County, Ohio.

Being all of the Donna C. Calvin 0.04 acre tract and 0.03 acre tract as deeded and described in Official Record 243, Page 166 of the Logan County Records of Deeds and being more particularly described as follows:

Beginning at a 1 inch iron rod found in a monument box on the west line of Section 35, the west line of Lake Township and at the intersection of center-lines of Troy Street and Garfield Avenue.

THENCE, with the center-line of Garfield Avenue (60 feet wide), S 55°-20'-05"E, a distance of 33.94 feet to a point.

THENCE, S 34°-39'-55"W, a distance of 30.00 feet to a railroad spike set with an "x" cut in top on the south right-of-way of Garfield Avenue and the east right-of-way of Troy Street (35 feet wide-15 feet east of center-line and 20 feet west of center-line) at the TRUE POINT OF BEGINNING.

THENCE, with the south right-of-way of Garfield Avenue, S 55°-20'-05"E, a distance of 130.00 feet to a 5/8 inch iron rod set.

THENCE, with the west line of the City of Bellefontaine 0.18 acre tract (Vol. 306, Pg. 133), S 5°-20'-23"W, a distance of 25.34 feet to a 5/8 inch iron rod set.

THENCE, with the north line of the Kemp G. Carter, III, 17.460 acre tract (O.R. 241, Pg. 388), N 55°-20'-05"W, a distance of 130.00 feet to a 5/8 inch iron rod set on the east right-of-way of Troy Street.

THENCE, with the east right-of-way of Troy Street, N 5°-20'-23"E, a distance of 25.34 feet to the point of beginning.

Containing 0.066 acre. Property is subject to easements and rights-of-way of record.

The basis for bearings is the center-line of Garfield Avenue, being S 55°-20'-05"E, and all other bearings are from angles and distances measured in a field survey by Lee Surveying and Mapping Co., Inc. on May 24, 2005.



ORIGINAL STAMP IN GREEN

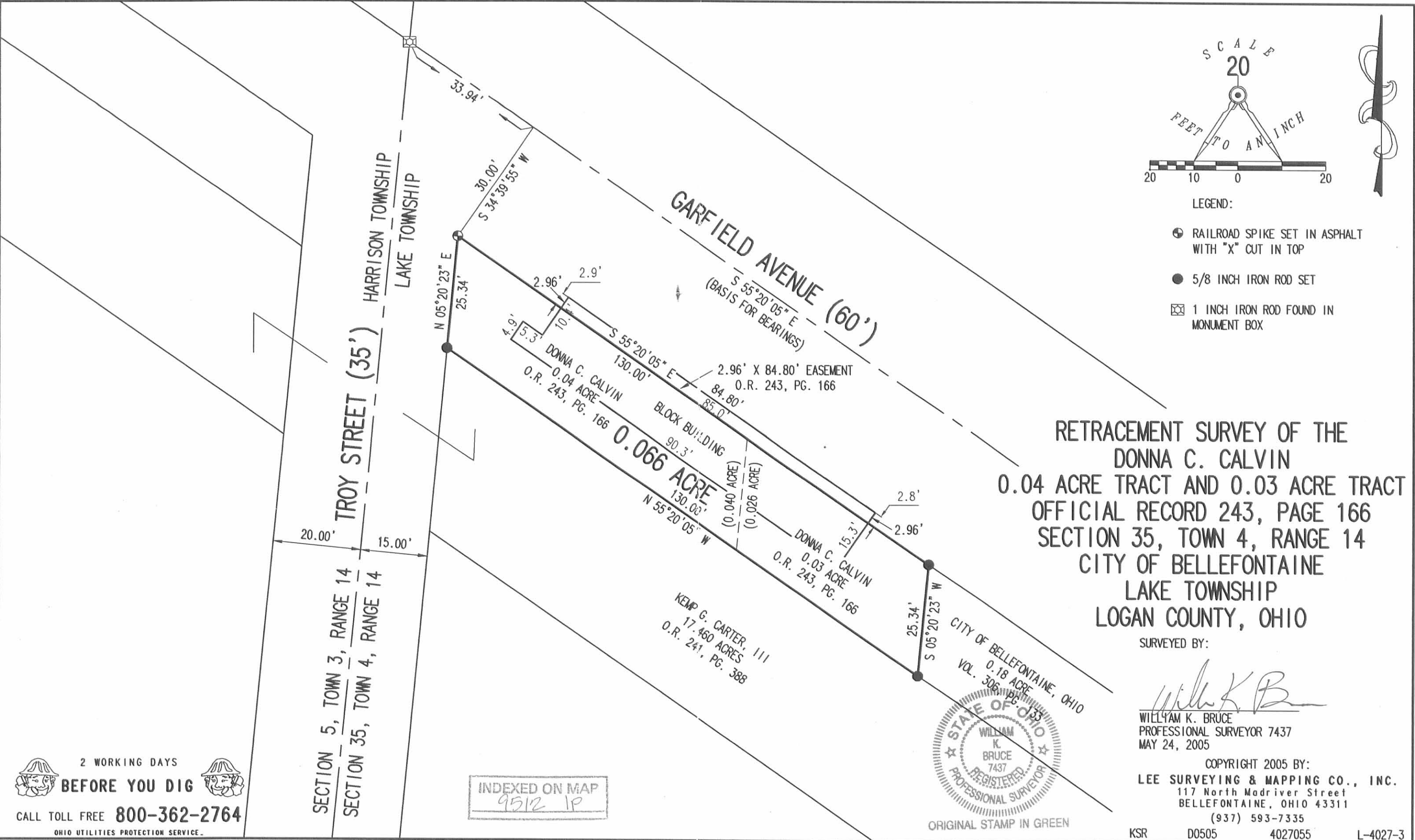
Description prepared by:

William K. Bruce
Professional Surveyor 7437
May 25, 2005

L-4027

INDEXED ON MAP
9512 1D

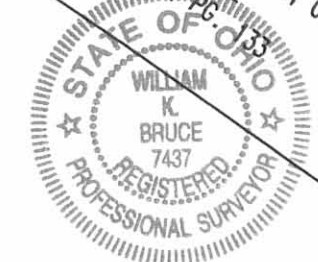
PLAT E-27-05 BY OK



RETRACEMENT SURVEY OF THE
 DONNA C. CALVIN
 0.04 ACRE TRACT AND 0.03 ACRE TRACT
 OFFICIAL RECORD 243, PAGE 166
 SECTION 35, TOWN 4, RANGE 14
 CITY OF BELLEFONTAINE
 LAKE TOWNSHIP
 LOGAN COUNTY, OHIO

SURVEYED BY:

 WILLIAM K. BRUCE
 PROFESSIONAL SURVEYOR 7437
 MAY 24, 2005



ORIGINAL STAMP IN GREEN

COPYRIGHT 2005 BY:
 LEE SURVEYING & MAPPING CO., INC.
 117 North Madriver Street
 BELLEFONTAINE, OHIO 43311
 (937) 593-7335

KSR D0505 4027055 L-4027-3

2 WORKING DAYS
BEFORE YOU DIG
 CALL TOLL FREE **800-362-2764**
 OHIO UTILITIES PROTECTION SERVICE.

INDEXED ON MAP
 9512 1P