

Lee Surveying and Mapping Co., Inc.

Land Surveys • Topography • Subdivisions • Construction Layout

117 N. Madriver St.
Bellefontaine OH 43311



Phone: (937) 593-7335
Fax: (937) 593-7444

MARKER 0.011 ACRE

Lying in Virginia Military Survey 4990, the City of Bellefontaine, Lake Township, Logan County, Ohio.

Being out of the Chester S. Marker and Joyce D. Marker 0.12 acre tract as deeded and described in Deed Volume 365, Page 629 of the Logan County Records of deeds and being more particularly described as follows:

Beginning at a MAG nail set in a drill hole on the concrete walk, at the northwest corner of the Bertha E. Schwaderer part of Lot 3511 of Grandi Subdivision (Plat Cabinet A, Slide 46), and deeded and described in O.R. 359, Pg. 232.

THENCE, with the west right-of-way of Hayes Street, N 0°00'-30"E, a distance of 6.00 feet to a MAG nail set inside a drill hole in the concrete walk

THENCE, S 89°-14'-22"E, a distance of 80.40 feet to a 5/8 inch iron rod set.

THENCE, with the west line of Lot 3509, S 0°00'-30"W, a distance of 6.00 feet to a point on a retaining wall.

THENCE, with the north line of Lot 3511, N 89°-14'-22"W, a distance 80.40 feet to the point of beginning.

Containing 0.011 acre.

The basis for bearings is S 0°-0'-30"E, and all other bearings are from angles and distances measured in a field survey by Lee Surveying and Mapping Co., Inc. on September 13, 2004.

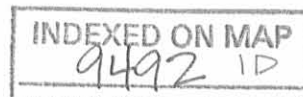
Description prepared by:



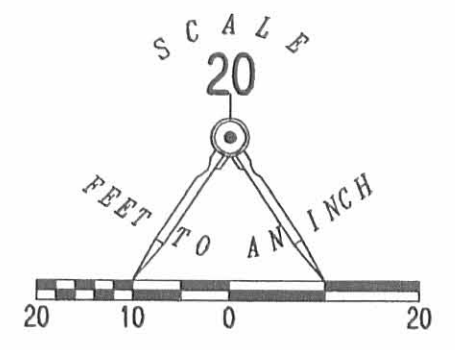
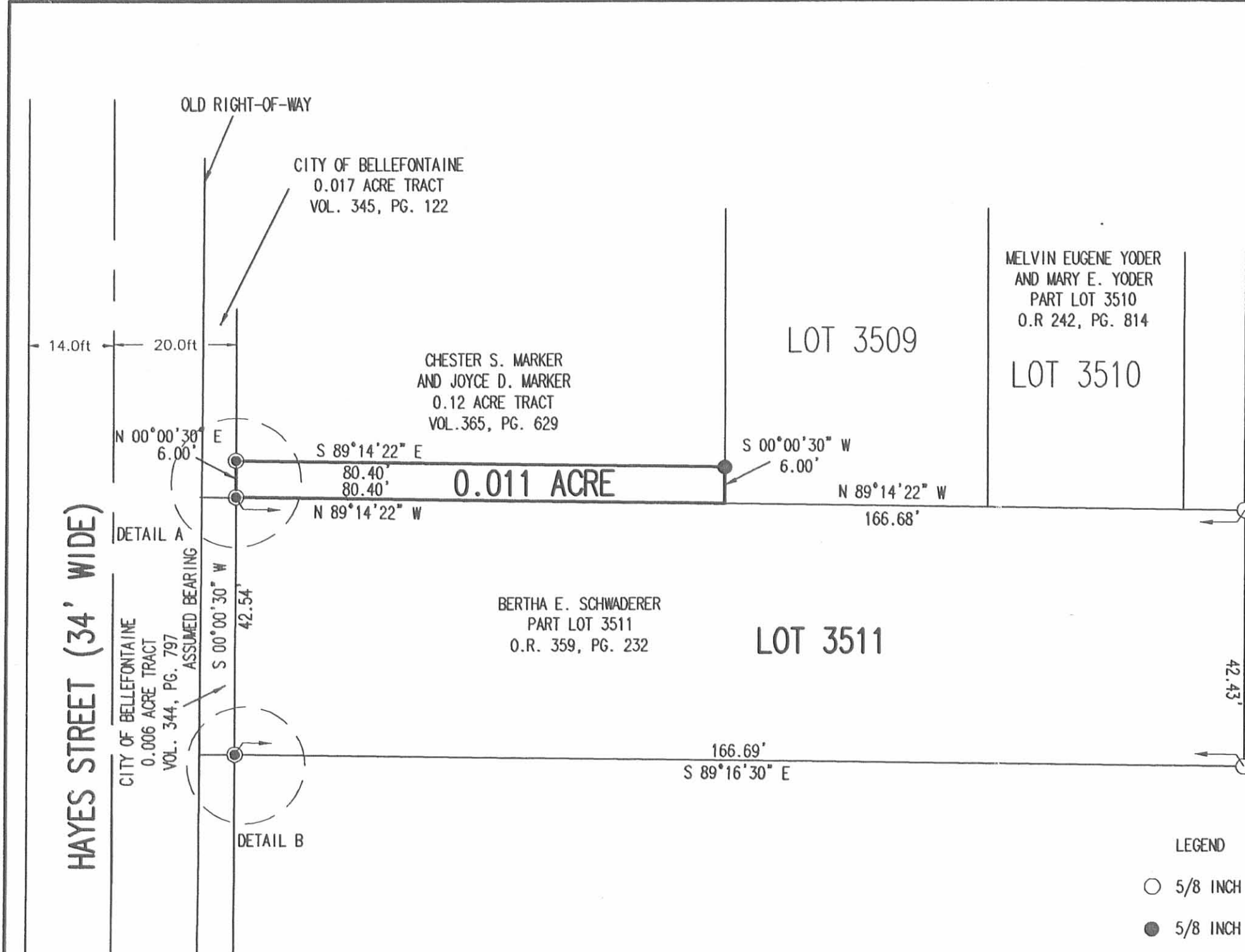
ORIGINAL STAMP IN GREEN

Jeffrey I. Lee
Professional Surveyor 6359
September 15, 2004

1828094



REC'D 9-17-04 SMM/OL



A RETRACEMENT SURVEY OF
PART LOT NUMBER 3511
GRANDI SUBDIVISION
PLAT CABINET A, SLIDE 46
AND A SURVEY OF A 0.011 ACRE TRACT OUT OF THE
CHESTER S. MARKER AND JOYCE D. MARKER
ORIGINAL 0.12 ACRE TRACT
VOLUME 365, PAGE 629
VIRGINIA MILITARY SURVEY 4990
CITY OF BELLEFONTAINE
LAKE TOWNSHIP
LOGAN COUNTY, OHIO

LEGEND

- 5/8 INCH IRON ROD FOUND
- 5/8 INCH IRON ROD SET
- ⊙ MAG NAIL SET IN DRILL HOLE
- ⊗ CHISELED "X" FOUND
- ⊗ CHISELED "X" SET

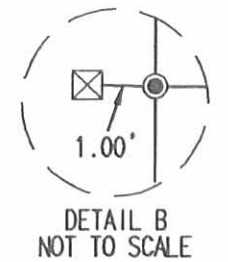
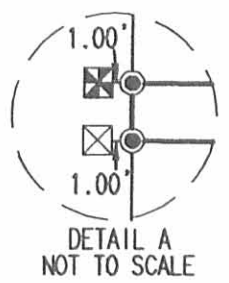
SURVEYED BY:



Jeffrey T. Lee
JEFFREY T. LEE
PROFESSIONAL SURVEYOR 6359
SEPTEMBER 13, 2004

COPYRIGHT 2004 BY:
LEE SURVEYING & MAPPING CO., INC.
117 North Madriver Street
BELLEFONTAINE, OHIO 43311
(937) 593-7335

2 WORKING DAYS
BEFORE YOU DIG
CALL TOLL FREE **800-362-2764**
OHIO UTILITIES PROTECTION SERVICE.



INDEXED ON MAP
9492 IP

ORIGINAL STAMP IN GREEN ADW D413 1828094 L-1828094-3