

poles to a post in the N side of said
Street: Thence with said St N 88 W $9\frac{6}{100}$ poles
to the beginning containing $\frac{15}{1000}$ of an acre.
Also part of Original Virginia Military Survey
No 4990 and bounded as follows: Beginning at
a post in the center of an Alley N. E. corner
to Moores lot: Thence with said Alley S 88 E
3. poles to a post: Thence S 16 E $17\frac{5}{10}$ poles to
a post in the center of the Jonesfield Pike
Thence with said pike N 70 W $5\frac{3}{10}$ poles to
a post in Audlows line: Thence with said
line N $18\frac{3}{4}$ W $6\frac{4}{10}$ poles to a post: Thence N 5 W
 $9\frac{8}{10}$ poles to the place of beginning containing
 $\frac{44}{100}$ of an acre.

Sullivan & Boyd

INDEXED ON MAP
9402 1P-2

1 REC'D 4-21-06 SM al

Lee Surveying and Mapping Co., Inc.

Land Surveys • Topography • Subdivisions • Construction Layout

117 N. Madriver St.
Bellefontaine OH 43311



Phone: (937) 593-7335
Fax: (937) 593-7444

1975 - 2005 - 30 YEARS OF EXCELLENCE

**HAW
0.272 ACRE**

Lying in Virginia Military Survey 4990 and Fractional Section 28, Town 4, Range 14 M.R.S., City of Bellefontaine, Lake Township, Logan County, Ohio.

Being all of the remainder Elizabeth M. Haw 0.295 acre tract as deeded and described in Official Record 73, Page 346, of the Logan County Records of Deeds and being more particularly described as follows:

Commencing at a 3/4 inch iron bolt found at the intersection of center-lines of Chillicothe Street (60 feet wide) and Eastern Avenue.

THENCE, with the center-line of Chillicothe Street, N 86°-59'-00"W, a distance 10.44 feet to a point.

THENCE, N 4°-00'-00"W, a distance of 30.23 feet to a 5/8 inch iron rod set at THE TRUE POINT OF BEGINNING.

THENCE, with the east line of the James P. Vanvoorhis and Heather J. Vanvoorhis 0.21 acre tract (O.R. 324, Pg. 460), N 4°-00'-00"W, distance of 221.73 feet to a 5/8 inch iron rod set.

THENCE, with the south right-of-way of a 16.5 feet wide alley, S 87°-00'-23"E, a distance of 57.00 feet to a 5/8 inch iron rod set.

THENCE, with the west line of the Gary Lee Kelley and Lori Ruth Kelley 0.25 acre tract (O.R. 465, Pg. 197), S 2°-23'-18"E, a distance of 221.07 feet to a 1 inch iron bar found.

THENCE, with the north right-of-way of Chillicothe Street, N 86°-59'-07"W, a distance of 50.74 feet to the point of beginning.

Containing 0.272 acre.

The basis for bearings is the center-line of Powers Street being N 2°-59'-41"E, and all other bearings are from angles and distances measured in a field survey by Lee Surveying and Mapping Co., Inc. on April 17, 2006.



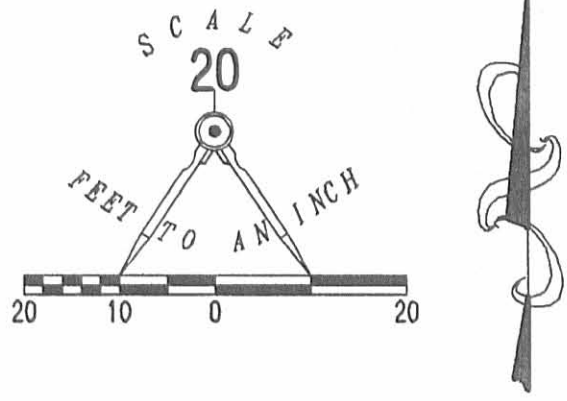
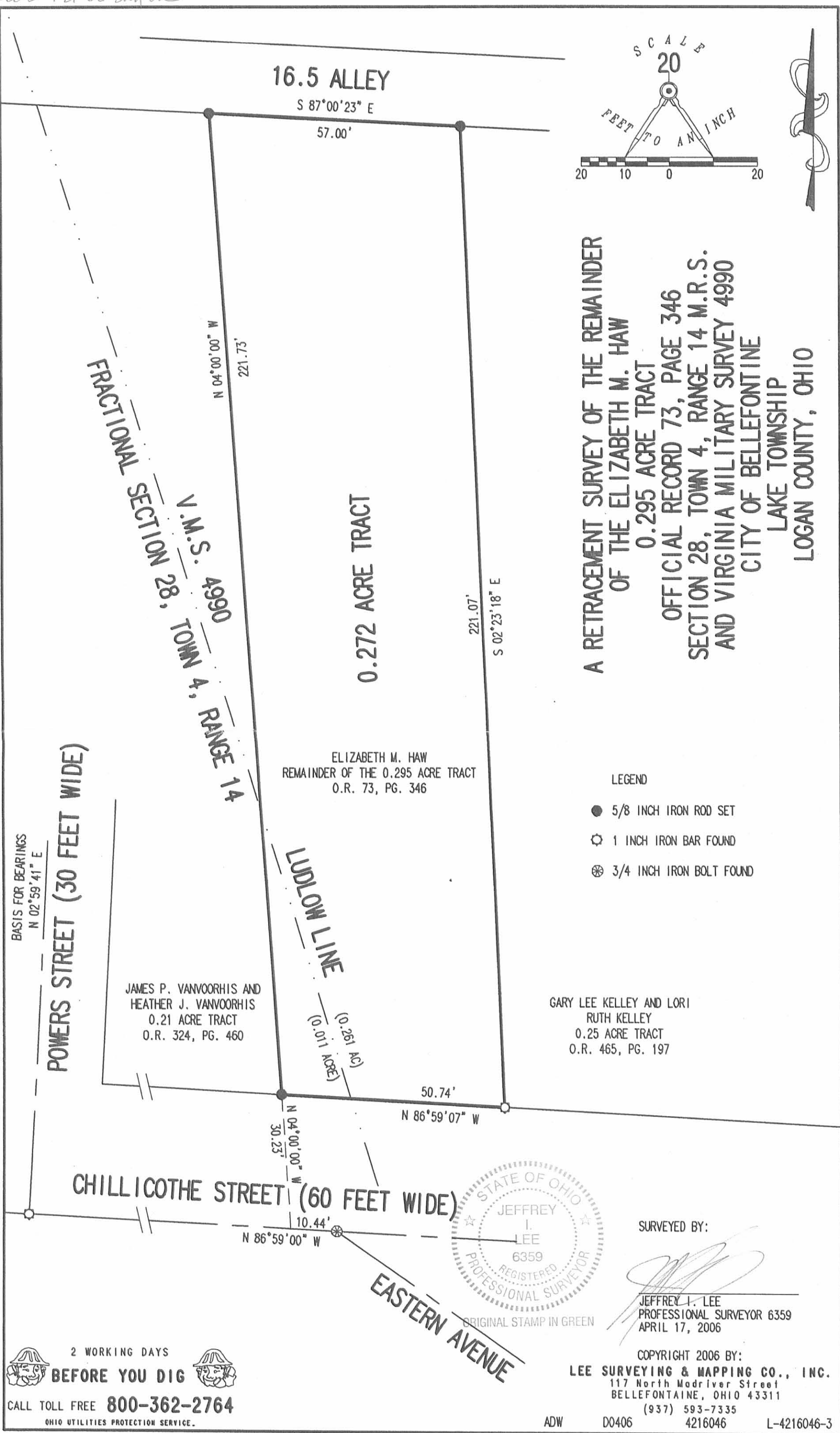
ORIGINAL STAMP IN GREEN

Description prepared by:

Jeffrey I. Lee
Professional Surveyor 6359
April 18, 2006

L-4216046





A RETRACEMENT SURVEY OF THE REMAINDER
OF THE ELIZABETH M. HAW
0.295 ACRE TRACT
OFFICIAL RECORD 73, PAGE 346
SECTION 28, TOWN 4, RANGE 14 M.R.S.
AND VIRGINIA MILITARY SURVEY 4990
CITY OF BELLEFONTAINE
LAKE TOWNSHIP
LOGAN COUNTY, OHIO

- LEGEND
- 5/8 INCH IRON ROD SET
 - ⊗ 1 INCH IRON BAR FOUND
 - ⊗ 3/4 INCH IRON BOLT FOUND



SURVEYED BY:
[Signature]
JEFFREY I. LEE
PROFESSIONAL SURVEYOR 6359
APRIL 17, 2006

COPYRIGHT 2006 BY:
LEE SURVEYING & MAPPING CO., INC.
117 North Madriver Street
BELLEFONTAINE, OHIO 43311
(937) 593-7335

2 WORKING DAYS
BEFORE YOU DIG
CALL TOLL FREE 800-362-2764
OHIO UTILITIES PROTECTION SERVICE.

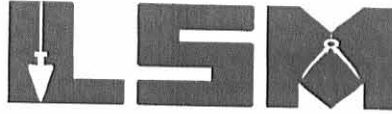
INDEXED ON MAP
9402 2P

REC'D 3-29-02 SMM ok

Lee Surveying and Mapping Co., Inc.

Land Surveys • Topography • Subdivisions • Construction Layout

117 N. Madriver St.
Bellefontaine OH 43311



Phone: (937) 593-7335
Fax: (937) 593-7444

YOE 0.260 ACRE

Lying in Fractional Section 28, Town 4, Range 14, City of Bellefontaine, Lake Township, Logan County, Ohio.

Being all of the Edward L. Yoe 0.28 acre tract as deeded and described in Official Record 360, Page 415 of the Logan County Records of Deeds and being more particularly described as follows:

Beginning at a 1 inch iron bar found in a monument box at the intersection of the center-lines of Powers Street (30 feet wide) and Chillicothe Avenue (60 feet wide).

THENCE, with the center-line of Powers Street, N 1°-00'-00" E, a distance of 30.00 feet to a point.

THENCE, with the north right-of-way extended and the north right-of-way of Chillicothe Avenue, S 88°-58'-41" E, a distance of 70.00 feet to a 3/4 inch iron pipe found at the TRUE POINT OF BEGINNING.

THENCE, with the east line of the Robert C. Frey 0.190 acre tract (O.R. 508, Pg. 935) and the east line of the Mitzi A. Coate 0.09 acre tract (O.R. 507, Pg. 299), N 1°-00'-00" E, a distance of 220.00 feet to a 5/8 inch iron rod set.

THENCE, with the south line of a 16.5 feet wide alley, S 88°-58'-41" E, a distance of 48.00 feet to a 5/8 inch iron rod set.

THENCE, with the west line of the Robert D. Reynolds 0.17 acre tract (O.R. 483, Pg. 856), S 0°-49'-21" E, a distance of 220.11 feet to a 1-1/2 inch iron pipe found.

THENCE, with the north right-of-way of Chillicothe Avenue, N 88°-58'-41" W, a distance of 55.00 feet to the point of beginning.

Containing 0.260 acre.

The basis for bearings is the center-line of Powers Street, being N 1°-00'-00" E, and all other bearings are from angles and distances measured in a field survey by Lee Surveying and Mapping Co., Inc. on March 21, 2002.

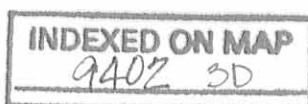


ORIGINAL STAMP IN GREEN

Description prepared by:

Jeffrey I. Lee
Professional Surveyor 6359
March 27, 2002

L-3335

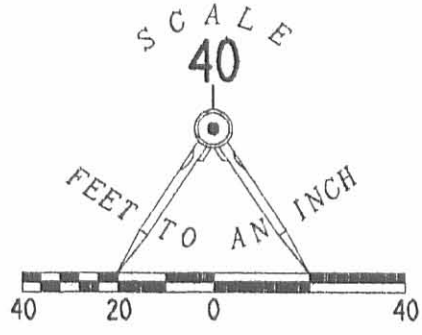


SECTION 34, TOWN 4, RANGE 14
SECTION 28, TOWN 4, RANGE 14

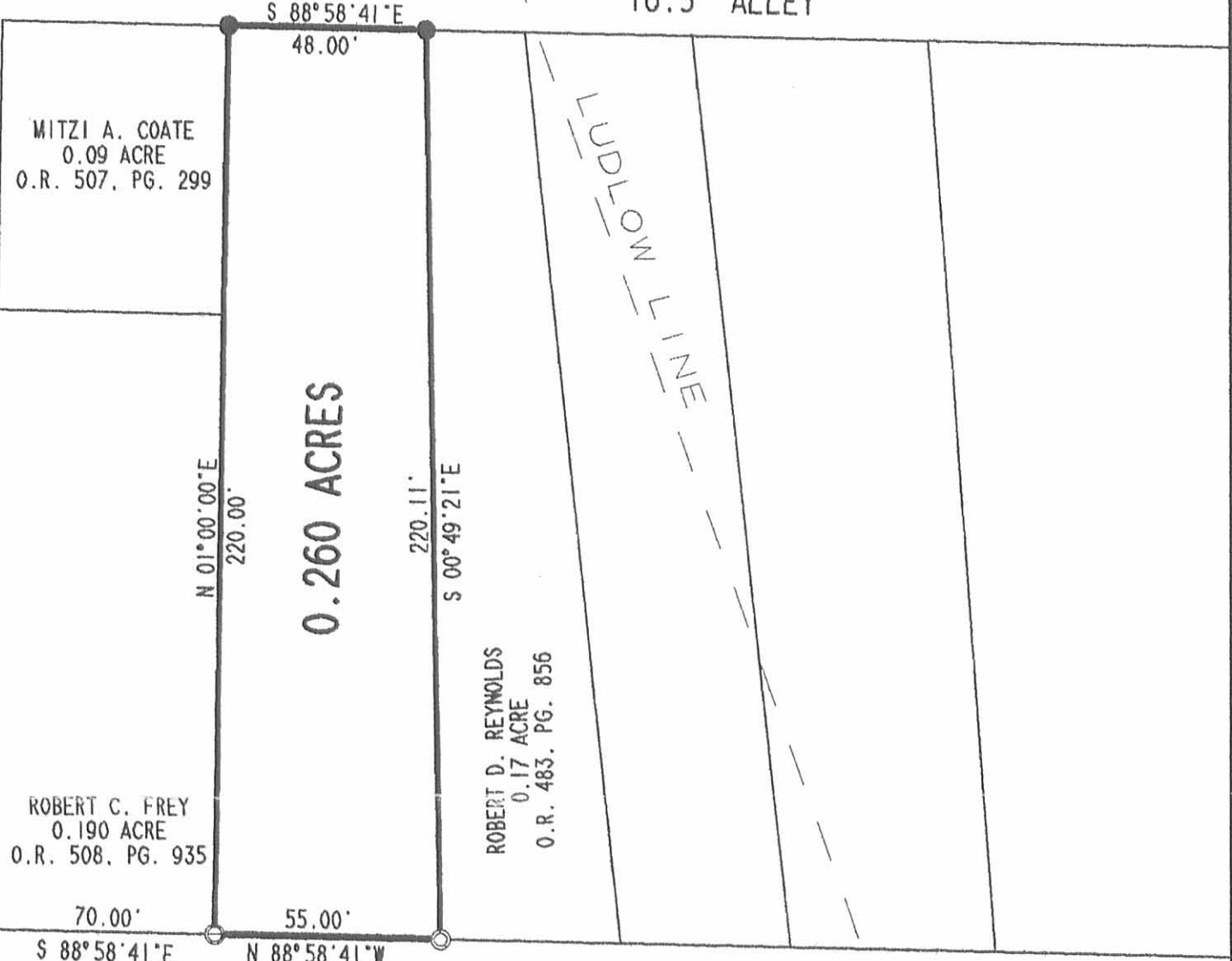
POWERS STREET (30' R/W)

LEGEND

- 5/8" IRON ROD SET
- ⊖ 3/4" IRON PIPE FOUND
- ⊙ 1 1/2" IRON PIPE FOUND
- ⊕ 1" IRON BAR FOUND IN MOMUMENT BOX ASSEMBLY
- 3/4" SQUARE BOLT FOUND



(BASIS FOR BEARINGS)
N 01°00'00"E
525.29' TO A MONUMENT BOX FOUND AT THE CENTER-LINE OF COLUMBUS AVENUE



CHILLICOTHE AVENUE (60' R/W)

EASTERN AVENUE

RETRACEMENT SURVEY OF THE
EDWARD L. YOE 0.28 ACRE TRACT
(0.260 ACRE BY THIS SURVEY)
OFFICIAL RECORD 360, PAGE 415
FRACTIONAL SECTION 28, TOWN 4, RANGE 14
CITY OF BELLEFONTAINE
LAKE TOWNSHIP
LOGAN COUNTY, OHIO

REFERENCE LOGAN COUNTY ENGINEER FILES:
R-5108, PLAT BOOK "D", PAGE 9,
LSM FILES: 1722, 2044, 3021

2 WORKING DAYS
BEFORE YOU DIG
CALL TOLL FREE **800-362-2764**
OHIO UTILITIES PROTECTION SERVICE.



ORIGINAL STAMP IN GREEN

SURVEYED BY:

[Signature]
JEFFREY I. LEE
PROFESSIONAL SURVEYOR 6359
MARCH 21, 2002

COPYRIGHT 2002 BY:
LEE SURVEYING & MAPPING CO., INC.
117 North Madriver Street
BELLEFONTAINE, OHIO 43311
(937) 593-7335

D 401 EDYOE L-3335-3

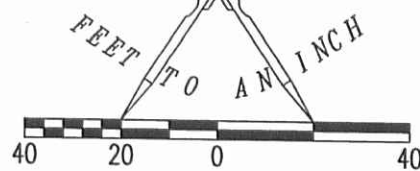
INDEXED ON MAP
9402.3P

5-29-13

APPROVED

COLUMBUS AVENUE

SCALE
40

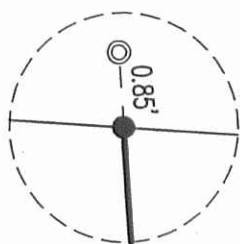


LEGEND:

- ☒ STONE FOUND IN A MONUMENT BOX
- ⊕ 1 INCH IRON BAR FOUND
- ⊗ 3/4 INCH IRON BOLT FOUND
- ⊙ 1-3/4 INCH IRON PIPE FOUND
- 5/8 INCH IRON ROD FOUND
- 5/8 INCH IRON ROD SET WITH PLASTIC I.D. CAP STAMPED "LSM 7437"

RETRACEMENT SURVEY OF THE
 JAMES P. VANVOORHIS AND
 HEATHER J. VANVOORHIS
 0.21 ACRE TRACT
 OFFICIAL RECORD 324, PAGE 460
 SECTION 28, TOWN 4, RANGE 14
 AND VIRGINIA MILITARY SURVEY 4990
 CITY OF BELLEFONTAINE
 LAKE TOWNSHIP
 LOGAN COUNTY, OHIO

DETAIL
NOT TO SCALE



N 02°59'41" E
525.29'

16.5' ALLEY

S 87°00'23" E

24.08'

40.92'

SEE
DETAIL

POWERS STREET (30')

N 03°56'50" W
 221.70'
 PATRICK E. WOLFE
 0.17 ACRE
 O.R. 923, PG. 905

VIRGINIA MILITARY SURVEY 4990
 FRACTIONAL SECTION 28, TOWN 4, RANGE 14
 JAMES P. VANVOORHIS AND
 HEATHER J. VANVOORHIS
 0.21 ACRE
 O.R. 324, PG. 460

LUDLOW LINE

44.00'

41.00'

N 86°59'00" W

N 86°59'00" W

224.12'
N 86°59'00" W

CHILlicothe STREET (60')

EASTERN AVE.

SURVEYED BY:

William K. Bruce

WILLIAM K. BRUCE
 PROFESSIONAL SURVEYOR 7437
 MAY 17, 2013



ORIGINAL STAMP IN GREEN

COPYRIGHT 2013 BY:
LEE SURVEYING & MAPPING CO., INC.
 117 North Madriver Street
 BELLEFONTAINE, OHIO 43311
 (937) 593-7335
 WWW.LSMINC.US
 surveys@lsminc.us

KSS D0513 55390513 L-5539-3

2 WORKING DAYS



BEFORE YOU DIG



CALL TOLL FREE **800-362-2764**

OHIO UTILITIES PROTECTION SERVICE

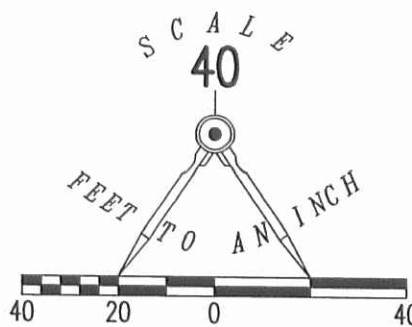
INDEXED ON MAP

9402 4P

APPROVED 9-5-13

LEGEND:

- ⊙ 1-3/4 INCH IRON PIPE FOUND
- 5/8 INCH IRON ROD FOUND
- 5/8 INCH IRON ROD SET WITH PLASTIC I.D. CAP STAMPED "LSM 7437"



16.5' ALLEY

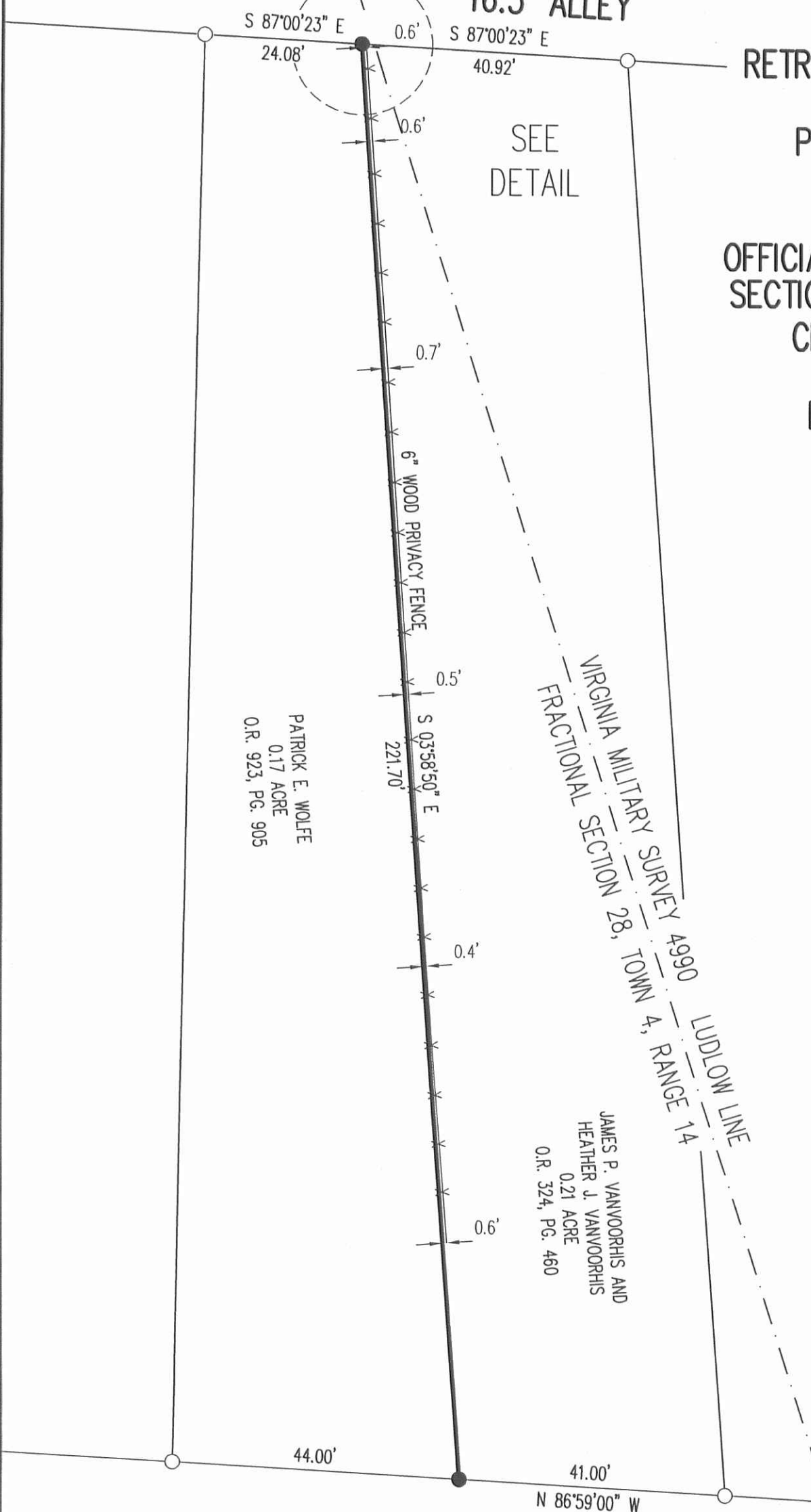
RETRACEMENT SURVEY OF THE
EAST LINE OF THE
PATRICK E. WOLFE AND
SHERI A. SMITH
0.17 ACRE TRACT
OFFICIAL RECORD 923, PAGE 905
SECTION 28, TOWN 4, RANGE 14
CITY OF BELLEFONTAINE
LAKE TOWNSHIP
LOGAN COUNTY, OHIO

SEE
DETAIL

PATRICK E. WOLFE
0.17 ACRE
O.R. 923, PG. 905

JAMES P. VANVOORHIS AND
HEATHER J. VANVOORHIS
0.21 ACRE
O.R. 324, PG. 460

VIRGINIA MILITARY SURVEY 4990
FRACTIONAL SECTION 28, TOWN 4, RANGE 14
LUDLOW LINE



SURVEYED BY:

William K. Bruce

WILLIAM K. BRUCE
PROFESSIONAL SURVEYOR 7437
AUGUST 28, 2013

COPYRIGHT 2013 BY:
LEE SURVEYING & MAPPING CO., INC.
117 North Madriver Street
BELLEFONTAINE, OHIO 43311
(937) 593-7335
WWW.LSMINC.US
surveys@lsminc.us



ORIGINAL STAMP IN GREEN

INDEXED ON MAP
9402 SP

2 WORKING DAYS
BEFORE YOU DIG
CALL TOLL FREE 800-362-2764
OHIO UTILITIES PROTECTION SERVICE.

KSS D0713 55860713 L-5586-3