

PARKS-CRUMRINE SURVEY
Part of Lots No. 1338,
1339 and 1340
City of Bellefontaine

The following described real estate situated in the City of Bellefontaine, Township of Lake, County of Logan, State of Ohio and being all of Patricia A. Parks part of Lots No. 1338, 1339 and 1340 as described in Official Record No. 275 Page 838 (12-22-1995) and as being 40.00 feet off the north ends of Lots No. 1338, 1339 and 1340 of Gardner Addition No. 5 to the City of Bellefontaine as recorded in Plat Cabinet A, Slide 21 (6-30-1891) and now being more particularly described as follows:

Beginning at a 5/8" x 30" Rebar set at the northeast corner to Lot No. 1338 and being the intersection of the west line of North Elm Street (50 feet wide) and the south line of West High Avenue (50 feet wide);

Thence with the west line of North Elm Street, S. 4°00'00" W. 40.08 feet to a Chisel Mark or "+" on a Concrete Step set, passing through a 5/8" x 30" Rebar set at 39.93 feet, (Note: The monumented centerline of North Elm Street is the Basis of Bearing for this survey - S. 4°00'00" W.), this point being the northeast corner to that part of Lot No. 1338 in the name of Roger E. Bump et al as recorded in Official Record No. 338 Page 660 (9-30-1997);

Thence with the north line of Bump's tract, N. 86°23'07" W. 165.01 feet to a 5/8" x 30" Rebar set in the line between Lots No. 1340 and 1341, passing through the line between Lots No. 1338 and 1339 at 50.004 feet, the line between Lots No. 1339 and a Vacated 15.00 foot Alley at 100.007 feet and the line between said Vacated 15.00 foot Alley and Lot No. 1340 at 115.007 feet;

Thence with the line between Lots 1340 and 1341, N. 3°55'37" E. 40.06 feet to a One Inch Iron Pipe found at the northwest corner to Lot No. 1340 and the northeast corner to Lot No. 1341 and being in the south line of West High Avenue;

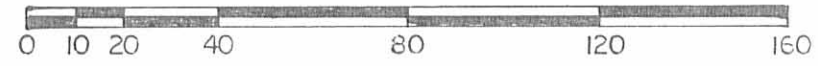
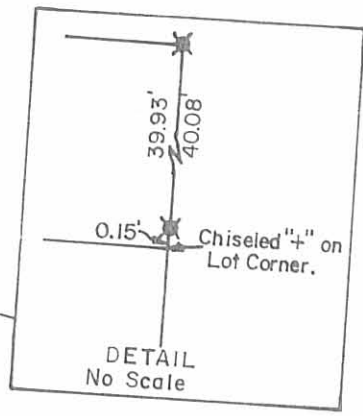
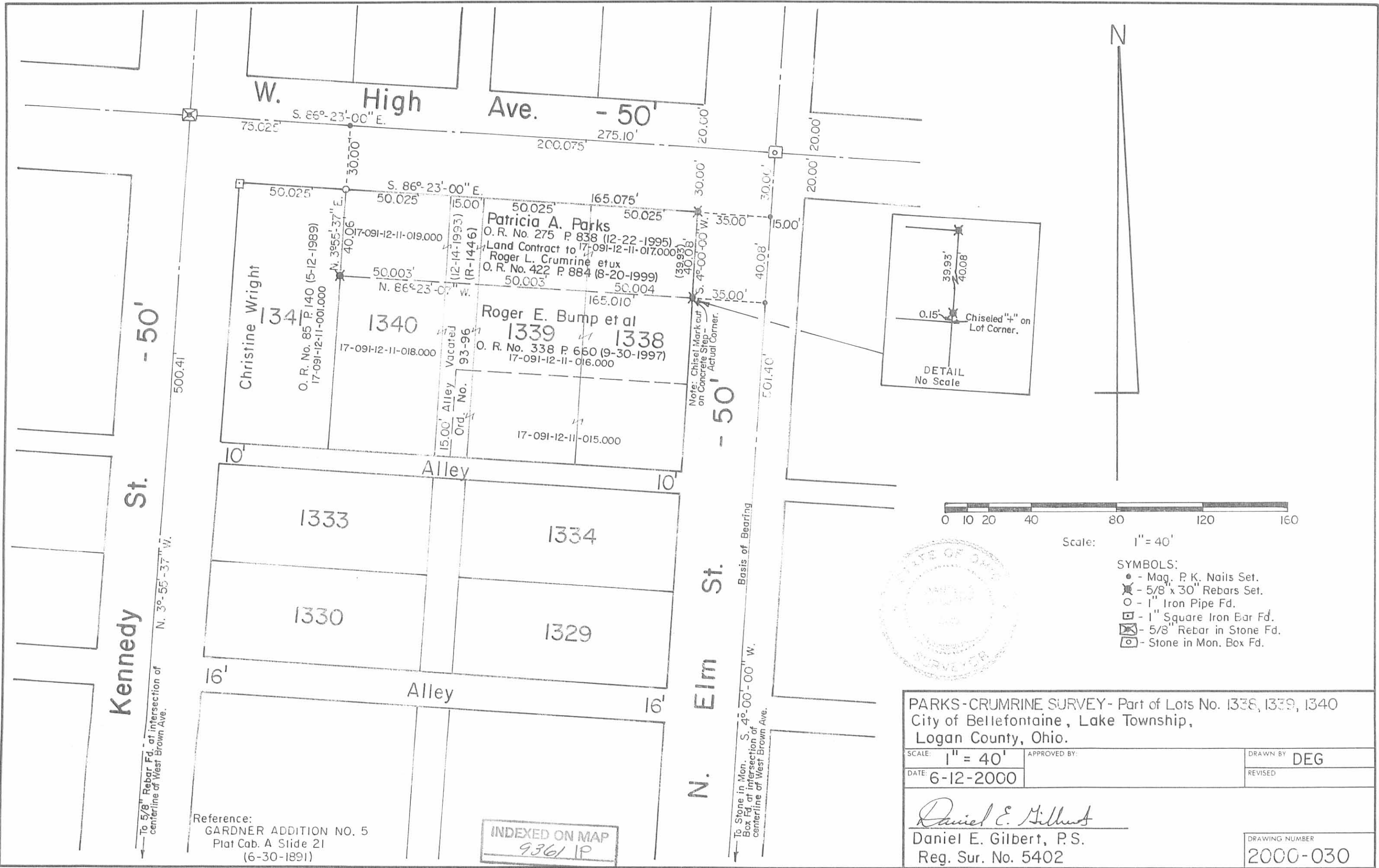
Thence with the south line of West High Avenue, S. 86°23'00" E. 165.075 feet to the place of beginning, passing through the corner to Lot No. 1340 and a Vacated 15.00 foot Alley at 50.025 feet and the corner to said Vacated 15.00 foot Alley and Lot No. 1339 at 60.025 feet and passing through the corner to Lot No. 1339 and 1338 at 115.050 feet.

I hereby certify that this description is the result of a field survey made by me on June 12, 2000.



Daniel E. Gilbert
DANIEL E. GILBERT, P.S.
REG. SUR. NO. 5402
400 N. PARK ST.
BELLEFONTAINE, OHIO 43311
TELEPHONE: 1 (513) 593-1428

INDEXED ON MAP
9361 1D



Scale: 1" = 40'

- SYMBOLS:
- - Mag. P.K. Nails Set.
 - ⊗ - 5/8" x 30" Rebars Set.
 - - 1" Iron Pipe Fd.
 - ⊠ - 1" Square Iron Bar Fd.
 - ⊞ - 5/8" Rebar in Stone Fd.
 - ⊡ - Stone in Mon. Box Fd.



PARKS-CRUMRINE SURVEY - Part of Lots No. 1338, 1339, 1340
 City of Bellefontaine, Lake Township,
 Logan County, Ohio.

SCALE: 1" = 40'	APPROVED BY:	DRAWN BY: DEG
DATE: 6-12-2000		REVISED:

Daniel E. Gilbert
 Daniel E. Gilbert, P.S.
 Reg. Sur. No. 5402

DRAWING NUMBER
 2000-030

Reference:
 GARDNER ADDITION NO. 5
 Plat Cab. A Slide 21
 (6-30-1891)

INDEXED ON MAP
 9361 IP

Kennedy St. - 50'

N. Elm St. - 50'

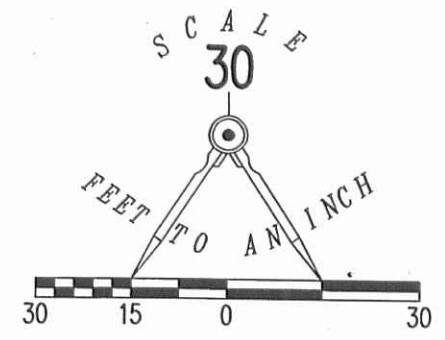
W. High Ave. - 50'

To 5/8" Rebar Fd. at intersection of
centerline of West Brown Ave.

To Stone in Mon. Box Fd. at intersection of
centerline of West Brown Ave.

Note: Chisel Mark cut
on Concrete Step -
Actual Corner.

✓ **APPROVED** 4-18-13



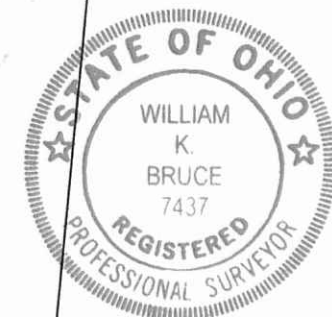
- LEGEND:
- 1 INCH SQUARE IRON BAR FOUND
 - 5/8 INCH IRON ROD FOUND
 - 5/8 INCH IRON ROD SET WITH PLASTIC I.D. CAP STAMPED "LSM 7437"

**RETRACEMENT SURVEY OF THE
GEORGE LYNN ADAMS
PARTS OF LOTS 1338 AND 1339
I.S. GARDNER'S FIFTH ADDITION
PLAT CABINET A, SLIDE 21
VOLUME 404, PAGE 701
CITY OF BELLEFONTAINE
LAKE TOWNSHIP
LOGAN COUNTY, OHIO**

SURVEYED BY:

William K. Bruce

WILLIAM K. BRUCE
PROFESSIONAL SURVEYOR 7437
APRIL 16, 2013



ORIGINAL STAMP IN GREEN

COPYRIGHT 2013 BY:
LEE SURVEYING & MAPPING CO., INC.
117 North Madriver Street
BELLEFONTAINE, OHIO 43311
(937) 593-7335
WWW.LSMINC.US
surveys@lsminc.us
KSS D0413 55210413 L-5521-3

2 WORKING DAYS
BEFORE YOU DIG
CALL TOLL FREE **800-362-2764**
OHIO UTILITIES PROTECTION SERVICE.

INDEXED ON MAP
9361 2P