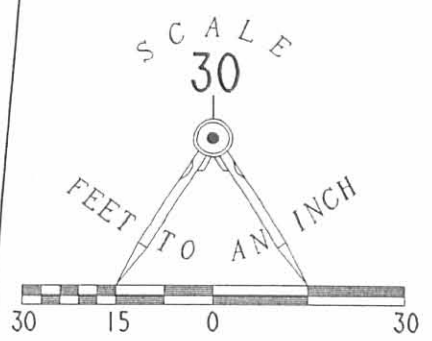
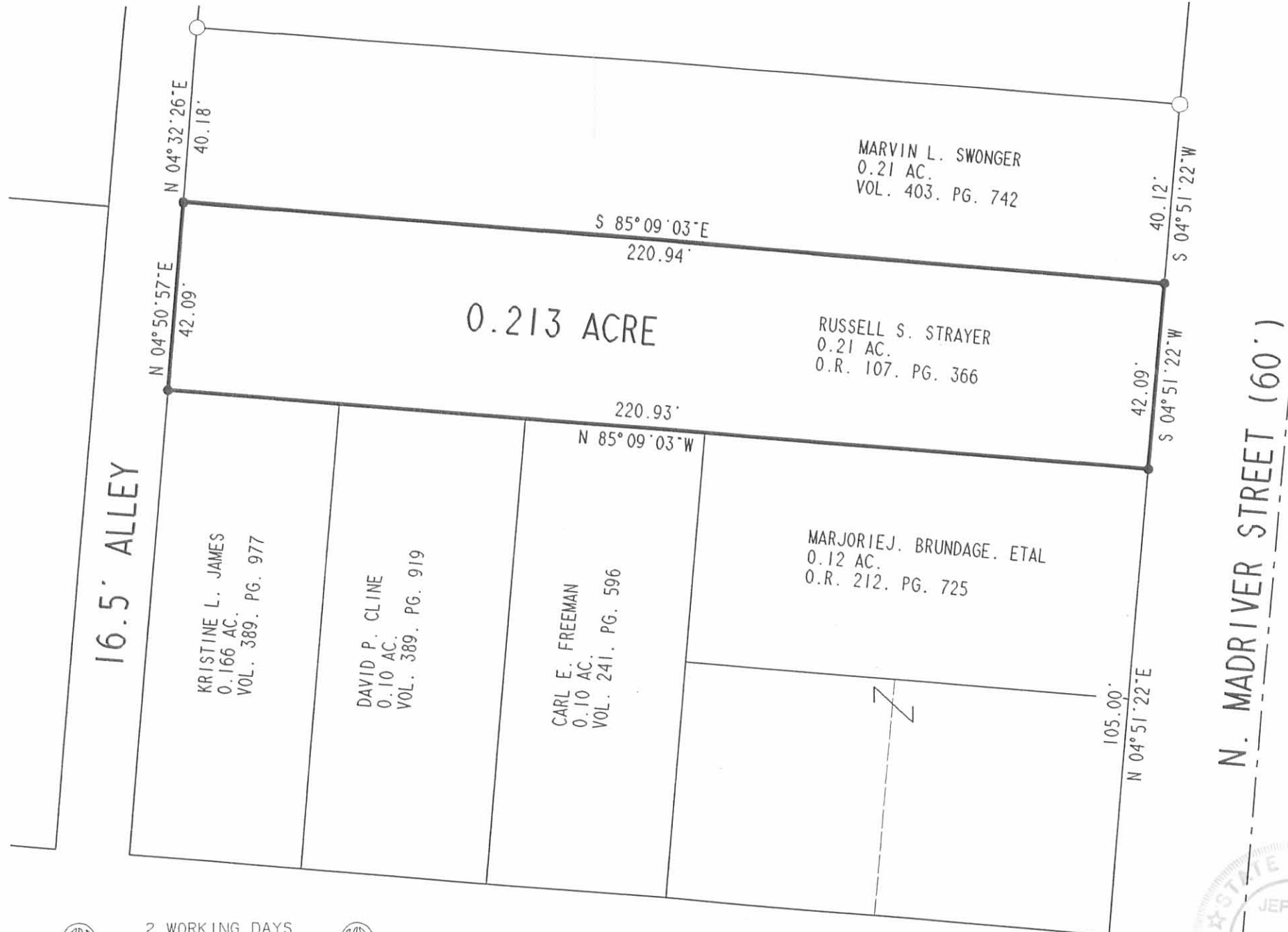


REC'D 9-26-94 SMY OK



- LEGEND
- 5/8" METAL PIPE FOUND
 - 5/8" I. ROD SET

RETRACEMENT SURVEY
0.213 ACRE
SECTION 35
TOWN 4, RANGE 14
CITY OF BELLEFONTAINE
LAKE TOWNSHIP
LOGAN COUNTY, OHIO

SURVEYED BY:
Jeffrey I. Lee
JEFFREY I. LEE
PROFESSIONAL SURVEYOR 6359
SEPTEMBER 6, 1994



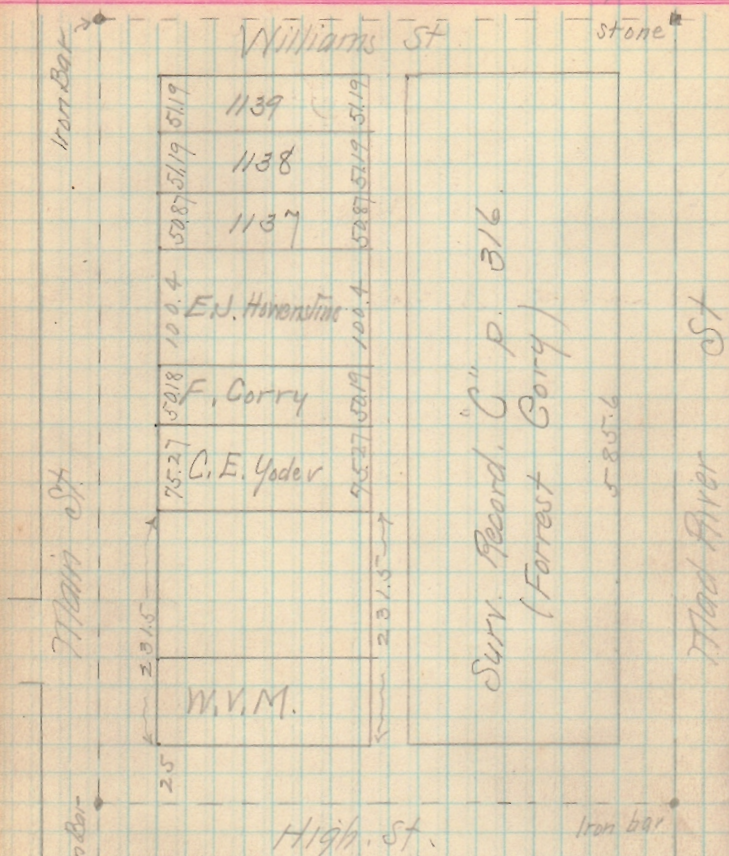
LEE SURVEYING & MAPPING CO.
143 East Columbus Avenue
BELLEFONTAINE, OHIO 43311
(513) 593-7335

D 243 RSTRAYER L 2221-4

2 WORKING DAYS
BEFORE YOU DIG
CALL TOLL FREE **800-362-2764**
OHIO UTILITIES PROTECTION SERVICE.

INDEXED ON MAP
8946 1P

HIGH STREET (50')



- Witnesses -

Main & High

S. E. L. Lawrence's stone wall - 398

Lamp post, S. E. 35.1

Main & W¹²⁵

Hyd. N. E. 32.2 N. E. L. Copino

Arch. Culv. = 46.33 NW Copino, culv. 48.25

Mad. R. & W¹²⁵

Hyd. N. W. 53.2 Elm, E. 20.9

Mad. R. ⁽²⁾ High

Lamp post NW 29.5

Hyd. SW 27.0

8946

Sept. 30. 09. A. W. Elliott, asst
 new wlt.
 Bar - Mad R. ⁽²⁾ High S.
 Bar = 6" under macadam surface
 Top screw Hyd. SW 27.5'
 Face curb east 15.05'
 S. end sewer inlet, N. W. 32.6'

Located N. line High thus, -

Meas. cent. bet. curb returns at
 High & Main. Meas. N. 2.5' which
 came to Marquis fence.

Took $\frac{1}{2}$ way bet. curb returns
 at High & Mad R. - Meas. N.
 2.5' This came to N. side
 cement walk at SE of Chandler's.

Found stakes set by survey at
 Moots corners. Meas. S. 42'
 for Leedem. frontage.

This came to point in sidewalk
 marked by joint between Berea ⁽²⁾
 red sandstone walk which point was
 designated by Chandler as about the
 line. This gave Chandler 104.9
 frontage on Mad River St. Set iron
 bar at W. edge of sidewalk. Gave
 Byers 52.45 frontage.

Meas. W. 100' from W. side Berea
 sidewalk, & set stake in old fence
 line which Mr. Chandler stated had
 been recognized & occupied as line for
 more than 25 yrs. This old fence,
 however bends toward N. about
 midway of orig. lot.

Set off 52.45' N. & S. by
100' E. & W. meas from W.
side of side-walk on Mad River.

Set iron bars at all 4 cor-
ners of Byers as above.

Chandlers lot at Alley (row Epps)
is 104.5' wide meas. N. from
N. line High St.

8946