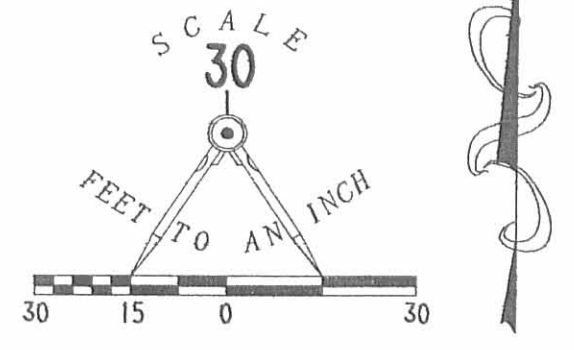
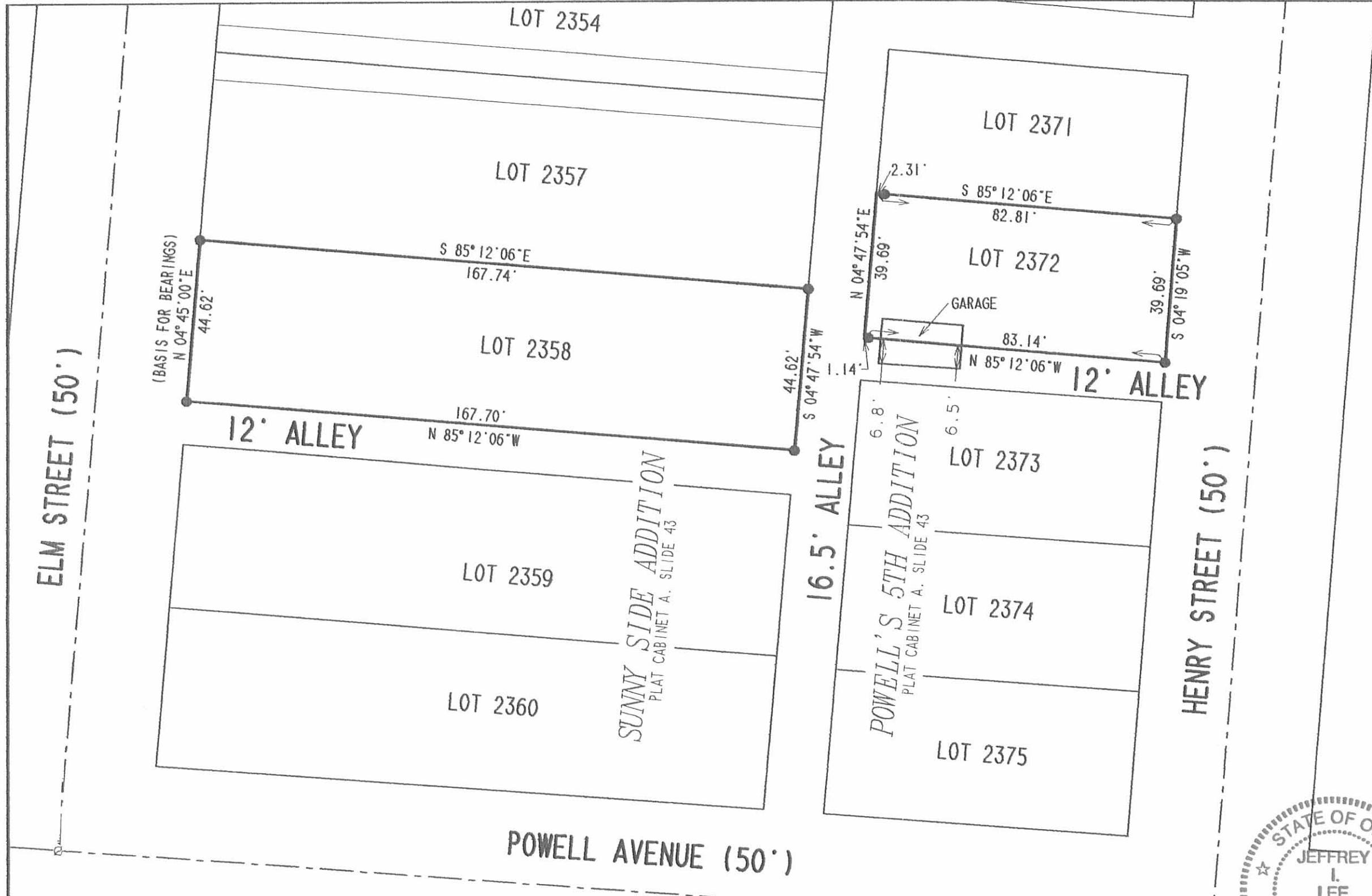


REC'D 3-5-02 SMJ OK



- LEGEND
- 5/8 INCH IRON ROD SET
 - 1-1/2 INCH IRON PIPE FOUND
 - ⊗ MAG NAIL FOUND

RETRACEMENT SURVEY OF
LOT 2372 OF
POWELL'S 5TH ADDITION
PLAT CABINET A. SLIDE 43
AND LOT 2358 OF
SUNNY SIDE ADDITION
PLAT CABINET A. SLIDE 43
CITY OF BELLEFONTAINE
LAKE TOWNSHIP
LOGAN COUNTY, OHIO



SURVEYED BY:
[Signature]
JEFFREY I. LEE
PROFESSIONAL SURVEYOR 6359
FEBRUARY 20, 2002

COPYRIGHT 2002 BY:
LEE SURVEYING & MAPPING CO., INC.
117 North Madriver Street
BELLEFONTAINE, OHIO 43311
(937) 593-7335

ORIGINAL STAMP IN GREEN

2 WORKING DAYS
BEFORE YOU DIG
CALL TOLL FREE **800-362-2764**
OHIO UTILITIES PROTECTION SERVICE.

INDEXED ON MAP
3894 IP

ELM STREET (50')

N 00° 28' 54" E



N 00° 28' 54" E
745.11'

SUNNY SIDE ADDITION

LOT 2358

12' ALLEY

LOT 2359

LOT 2360

N 89° 56' 30" E

52.00'

N 00° 33' 04" E

89.18'

0.106 ACRE

52.00'
S 89° 55' 59" W

16.5' ALLEY

NOTE: BUILDING ENCRROACHES INTO ALLEY

120.03'

N 00° 33' 04" E

LOT 2372

12' ALLEY
N 89° 56' 39" E

83.31'

LOT 2373

0.231 ACRE

LOT 2374

LOT 2375

84.37'
S 89° 55' 59" W

POWELL 5TH ADDITION

S 00° 02' 50" W

HENRY STREET (50')

N 00° 02' 50" E

S 89° 55' 59" W 318.51'

POWELL AVENUE (50')

ELM STREET

INDEXED ON MAP
8894 2P

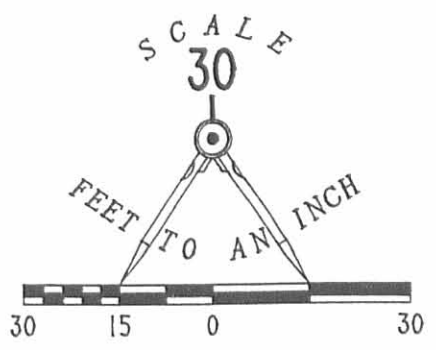
2 WORKING DAYS
BEFORE YOU DIG
CALL TOLL FREE **800-362-2764**
OHIO UTILITIES PROTECTION SERVICE.

RETRACEMENT SURVEY OF
LOTS 2373, 2374, 2375 AND THE
EAST 52' OF LOTS 2359 AND 2360
CITY OF BELLEFONTAINE
LOGAN COUNTY, OHIO



ORIGINAL STAMP IN GREEN

SURVEYED BY:
Jeffrey L. Lee
JEFFREY L. LEE
PROFESSIONAL SURVEYOR 6359
APRIL 13, 1994
LEE SURVEYING & MAPPING CO.
143 East Columbus Avenue
BELLEFONTAINE, OHIO 43311
(513) 593-7335
D 237 SCHWADER L-2175-4



LEGEND

- 5/8" IRON ROD SET
- 5/8" IRON BAR FOUND
- 1" IRON PIPE FOUND

REFERENCES

- PLAT OF POWELL 5th ADD. SUBDIVISION
PLAT CABINET A. SLIDE 43
- PLAT OF SUNNY SIDE ADD. SUBDIVISION
PLAT CABINET A. SLIDE 44
- LOGAN CO. MAP ROOM. SURVEY INDEX
FILE NO. 6534