

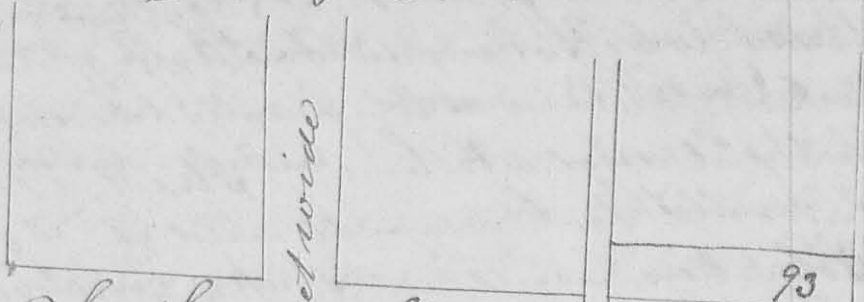
192

No 682

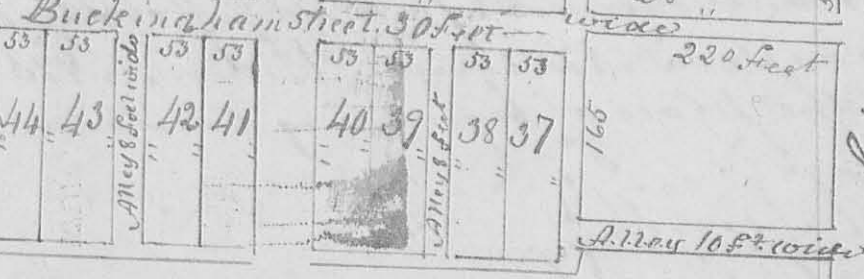
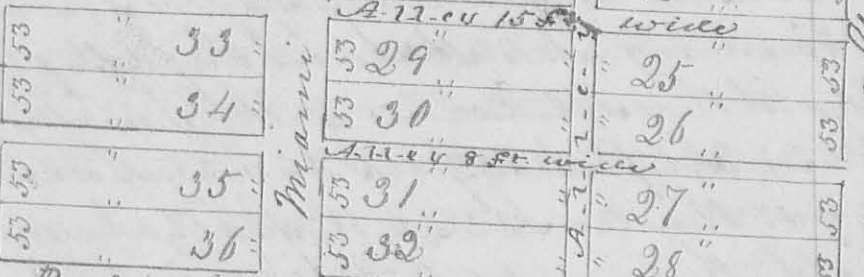
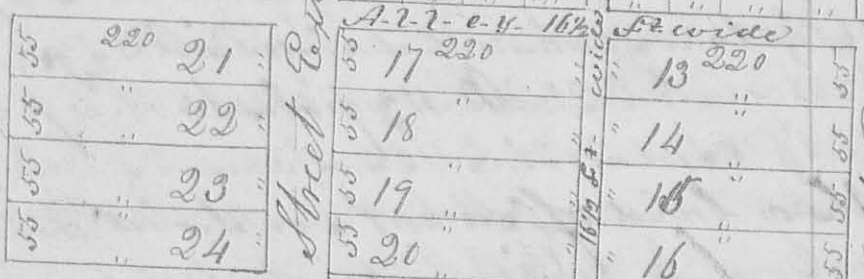
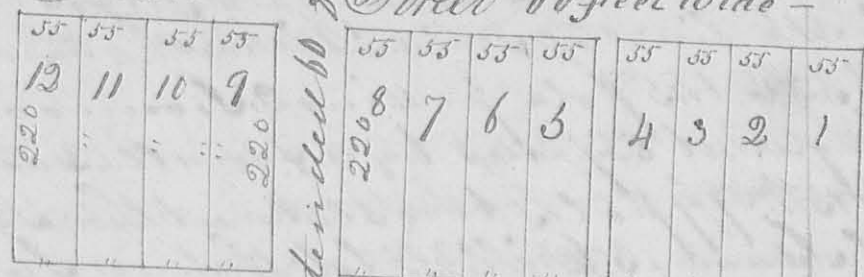
"Bellefontaine" Slicer's Addition to.

8577

Rail Road



South Street 60 feet wide -



Miami Street Extended 60 feet wide

Cincinnati Street Extended

Mag^{rs} Mar

The above plat represents Slicer's addition to the town of Bellefontaine made Oct. - September 3rd 1849 Beginning at a stone 517 1/2 ft 60 feet from lot No. 93 of the original plat of Bellefontaine.

Cincinnati Street is 60 feet wide and bears $S1\frac{1}{2}^{\circ}W$. from the North end. South Street is 60 feet wide (one half of which belongs to Bellefontaine as Originally laid off) and is at right angles to Cincinnati Street. Miami Street is parallel to Cincinnati Street and is 60 feet wide.

The alleys are all either parallel with or at right angles ~~with~~ ^{to} Cincinnati Street and have their widths expressed within them in small figures.

Lots Nos 1, 2, 3, 4, 5, 6, 7, 8, 9, 10, 11 and 12 inclusive front 55 feet on South Street and extend 220 back containing each 12100 sq. feet,

Lots No 13, 14, 15 and 16 each front 55 feet on Cincinnati Street and extend 220 feet back,

Nos 17, 18, 19 and 20-21, 22, 23 and 24 are each 55 feet front on Miami Street and extend 220 feet back containing each 12100 sq. feet,

Nos 25, 26, 27 and 28 are each 53 feet front on Cincinnati Street and extend 220 back

Nos 29, 30, 31 and 32 — 33, 34, 35 and 36 are each 53 feet front on Miami Street and extend 220 feet back containing each 11660 sq. feet,

Buckingham Street is 30 feet wide and is parallel to South Street,

Lots Nos 37, 38, 39, 40, 41, 42, 43 and 44 are each 53 feet front on Buckingham Street and extend 180 feet back containing 9540 sq. feet,

O. Hayes Sur. Gen. Ohio.