

REC'D 5-31-95 SMY OK ✓



# Lee Surveying and Mapping Co.



Farm Surveys • Lot Surveys • Topography • Subdivisions • Construction Layout

143 EAST COLUMBUS AVENUE  
BELLEFONTAINE, OHIO 43311

(513) 593-7335

JEFFREY I. LEE, P.S.

## BOB EVANS FARMS, INC. INGRESS/EGRESS EASEMENT

Lying in Section 32, Town 4, Range 14, City of Bellefontaine, Liberty Township, Logan County, Ohio.

Being an ingress and egress easement across the Bob Evans Farms, Inc. 0.959 acre tract as deeded and described in Official Record 176, Page 37 of the Logan County Records of Deeds and being more particularly described as follows:

Beginning at a point on the northwest corner of the said 0.959 acre tract.

THENCE, with the north line of the said 0.959 acre tract, S 86°-03'-58" E, a distance of 7.48 feet to a point.

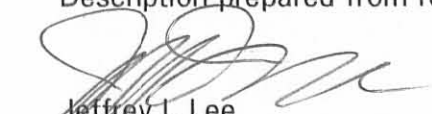
THENCE, with a curve to the left having a central angle of 14°-16'-34", a radius of 87.50 feet with a chord bearing S 16°-04'-53" W, a chord distance of 21.75 feet to a point

THENCE, S 8°-56'-35" W, a distance of 116.45 feet to a point on the west line of the said 0.959 acre tract.

THENCE, with the west line of the 0.959 acre tract, N 6°-57'-57" E, a distance of 137.46 feet to the point of beginning.

Containing 0.008 acre.

Description prepared from records by:

  
Jeffrey I. Lee  
Professional Surveyor 6359  
May 29, 1995

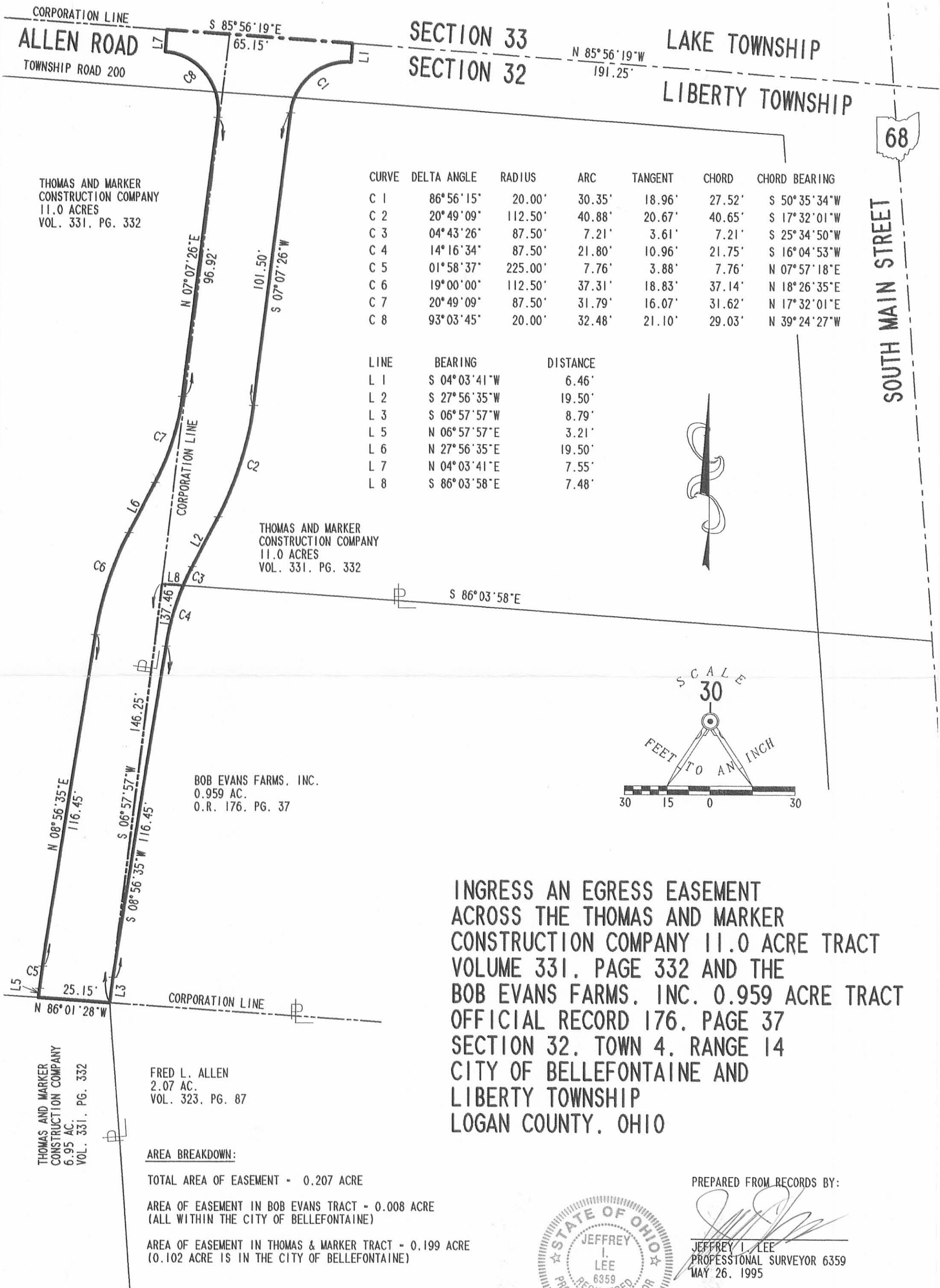


L 435

ORIGINAL STAMP IN GREEN

INDEXED ON MAP  
8221 3D

REC'D 5-31-95 8M/OK



SECTION 33  
SECTION 32

LAKE TOWNSHIP  
LIBERTY TOWNSHIP

68

SOUTH MAIN STREET

THOMAS AND MARKER  
CONSTRUCTION COMPANY  
11.0 ACRES  
VOL. 331, PG. 332

THOMAS AND MARKER  
CONSTRUCTION COMPANY  
11.0 ACRES  
VOL. 331, PG. 332

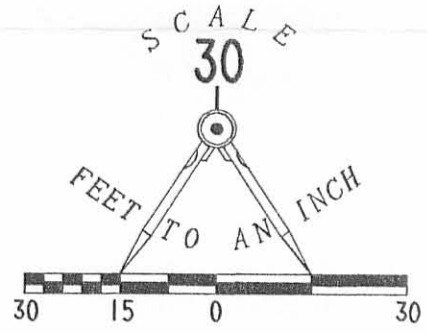
BOB EVANS FARMS, INC.  
0.959 AC.  
O.R. 176, PG. 37

THOMAS AND MARKER  
CONSTRUCTION COMPANY  
6.95 AC.  
VOL. 331, PG. 332

FRED L. ALLEN  
2.07 AC.  
VOL. 323, PG. 87

CURVE	DELTA ANGLE	RADIUS	ARC	TANGENT	CHORD	CHORD BEARING
C 1	86° 56' 15"	20.00'	30.35'	18.96'	27.52'	S 50° 35' 34" W
C 2	20° 49' 09"	112.50'	40.88'	20.67'	40.65'	S 17° 32' 01" W
C 3	04° 43' 26"	87.50'	7.21'	3.61'	7.21'	S 25° 34' 50" W
C 4	14° 16' 34"	87.50'	21.80'	10.96'	21.75'	S 16° 04' 53" W
C 5	01° 58' 37"	225.00'	7.76'	3.88'	7.76'	N 07° 57' 18" E
C 6	19° 00' 00"	112.50'	37.31'	18.83'	37.14'	N 18° 26' 35" E
C 7	20° 49' 09"	87.50'	31.79'	16.07'	31.62'	N 17° 32' 01" E
C 8	93° 03' 45"	20.00'	32.48'	21.10'	29.03'	N 39° 24' 27" W

LINE	BEARING	DISTANCE
L 1	S 04° 03' 41" W	6.46'
L 2	S 27° 56' 35" W	19.50'
L 3	S 06° 57' 57" W	8.79'
L 5	N 06° 57' 57" E	3.21'
L 6	N 27° 56' 35" E	19.50'
L 7	N 04° 03' 41" E	7.55'
L 8	S 86° 03' 58" E	7.48'



INGRESS AN EGRESS EASEMENT  
ACROSS THE THOMAS AND MARKER  
CONSTRUCTION COMPANY 11.0 ACRE TRACT  
VOLUME 331, PAGE 332 AND THE  
BOB EVANS FARMS, INC. 0.959 ACRE TRACT  
OFFICIAL RECORD 176, PAGE 37  
SECTION 32, TOWN 4, RANGE 14  
CITY OF BELLEFONTAINE AND  
LIBERTY TOWNSHIP  
LOGAN COUNTY, OHIO

**AREA BREAKDOWN:**

- TOTAL AREA OF EASEMENT - 0.207 ACRE
- AREA OF EASEMENT IN BOB EVANS TRACT - 0.008 ACRE  
(ALL WITHIN THE CITY OF BELLEFONTAINE)
- AREA OF EASEMENT IN THOMAS & MARKER TRACT - 0.199 ACRE  
(0.102 ACRE IS IN THE CITY OF BELLEFONTAINE)

PREPARED FROM RECORDS BY:



*Jeffrey I. Lee*  
JEFFREY I. LEE  
PROFESSIONAL SURVEYOR 6359  
MAY 26, 1995

COPYRIGHT 1995 BY:  
LEE SURVEYING & MAPPING CO.  
143 East Columbus Avenue  
BELLEFONTAINE, OHIO 43311  
(513) 593-7335

2 WORKING DAYS  
**BEFORE YOU DIG**  
CALL TOLL FREE **800-362-2764**  
OHIO UTILITIES PROTECTION SERVICE.

INDEXED ON MAP  
0221 3P

REC'D 5-15-95 SM OK ✓



# Lee Surveying and Mapping Co.



Farm Surveys • Lot Surveys • Topography • Subdivisions • Construction Layout

143 EAST COLUMBUS AVENUE  
BELLEFONTAINE, OHIO 43311

(513) 593-7335

JEFFREY I. LEE, P.S.

## THOMAS AND MARKER CONSTRUCTION COMPANY 25 FEET WIDE INGRESS/EGRESS EASEMENT

Lying in Section 32, Town 4, Range 14, City of Bellefontaine and Liberty Township, Logan County, Ohio.

Being an ingress and egress easement across the Thomas and Marker Construction Company 11.0 acre tract as deeded and described in Volume 331, Page 332 of the Logan County Records of Deeds and being more particularly described as follows:

Beginning at the intersection of center-lines of South Main Street (U.S. Route 68) and Allen Road (Township Road 200). The center-line of Allen Road is the Section Line between Sections 32 and 33.

THENCE, with the north line of Section 32 and the center-line of Allen Road, N 85°-56'-19" W, a distance of 191.21 feet to the POINT OF BEGINNING.

THENCE, S 4°-03'-41" W, a distance of 6.46 feet to a point on the south edge of pavement.

THENCE, with a curve to the left having a central angle of 87°-01'-46", a radius of 20.00 feet with a chord bearing S 50°-39'-28" W, a chord distance of 27.54 feet to a point.

THENCE, S 7°-07'-05" W, a distance of 30.26 feet to a point.

THENCE, with a curve to the right having a central angle of 15°-00'-29", a radius of 172.42 feet with a chord bearing S 14°-32'-43" W, a chord distance of 45.03 feet to a point.

THENCE, S 22°-02'-23" W, a distance of 51.47 feet to a point.

THENCE, with a curve to the left having a central angle of 15°-04'-29", a radius of 147.49 feet with a chord bearing S 14°-30'-08" W, a chord distance of 38.69 feet to a point.

THENCE, S 6°-57'-54" W, a distance of 3.94 feet to a point.

THENCE, with the west line of the Bob Evans Farms, Inc. 0.959 acre tract (O.R. 176, Pg. 37), S 6°-57'-57" W, a distance of 146.25 feet to a point on the southwest corner of the said 0.959 acre tract.

THENCE, with the north line of the Thomas and Marker 6.95 acre tract (Vol. 331, Pg. 332), N 86°-01'-28" W, a distance of 25.03 feet to a point.

THENCE, N 6°-57'-57" E, a distance of 146.23 feet to a point.

THENCE, N 6°-57'-54" E, a distance of 5.26 feet to a point.

THENCE, with a curve to the right having a central angle of 15°-04'-29", a radius of 172.49 feet with a chord bearing N 14°-30'-08" E, a chord distance of 45.25 feet to a point.

THENCE, N 22°-02'-23" E, a distance of 51.47 feet to a point.

THENCE, with a curve to the left having a central angle of 15°-00'-29", a radius of 147.41 feet with a chord bearing N 14°-32'-49" E, a chord distance of 38.50 feet to a point.

THENCE, N 7°-07'-05" E, a distance of 25.72 feet to a point.

THENCE, with a curve to the left having a central angle of 95°-03'-10", a radius of 20.00 feet with a chord bearing N 40°-24'-18" W, a chord distance of 29.51 feet to a point on the south edge of pavement of Township Road 200.

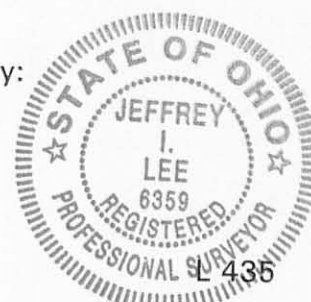
THENCE, N 4°-03'-41" E, a distance of 7.57 feet to a point on the north line of Section 32 and the center-line of Township Road 200.

THENCE, with the north line of Section 32, S 85°-56'-19" E, a distance of 65.89 feet to the point of beginning.

Containing 0.206 acre.

Description prepared from records by:

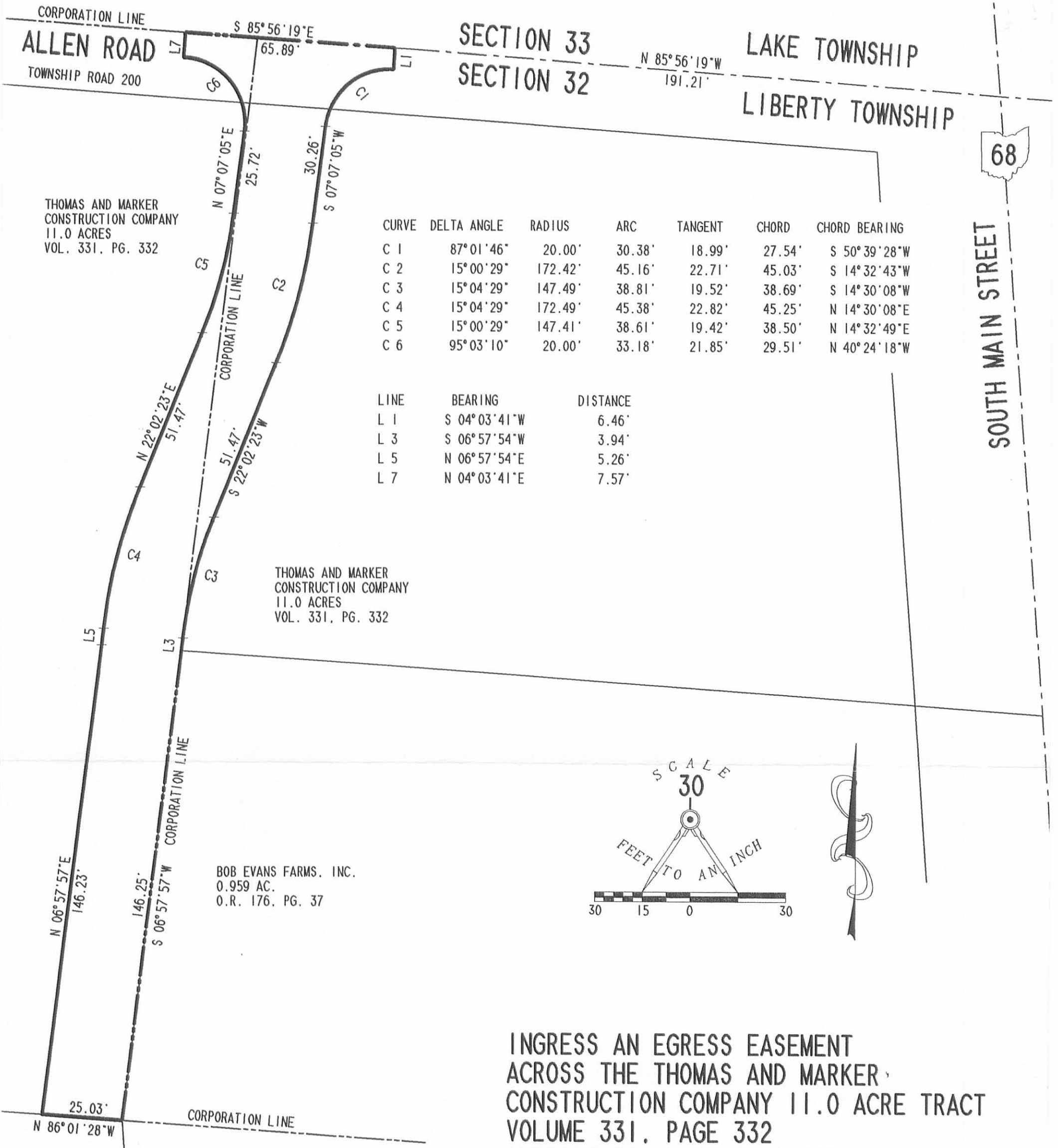
*Jeffrey I. Lee*  
Jeffrey I. Lee  
Professional Surveyor 6359  
May 14, 1995



ORIGINAL STAMP IN GREEN

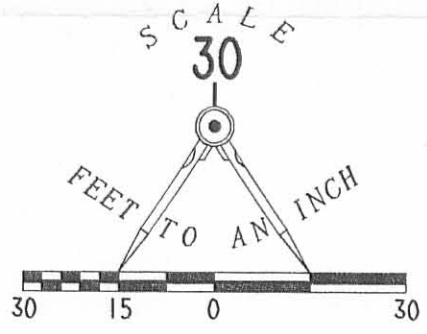
INDEXED ON MAP  
8221 4D

REC'D 5-15-95 SML ON



CURVE	DELTA ANGLE	RADIUS	ARC	TANGENT	CHORD	CHORD BEARING
C 1	87° 01' 46"	20.00'	30.38'	18.99'	27.54'	S 50° 39' 28"W
C 2	15° 00' 29"	172.42'	45.16'	22.71'	45.03'	S 14° 32' 43"W
C 3	15° 04' 29"	147.49'	38.81'	19.52'	38.69'	S 14° 30' 08"W
C 4	15° 04' 29"	172.49'	45.38'	22.82'	45.25'	N 14° 30' 08"E
C 5	15° 00' 29"	147.41'	38.61'	19.42'	38.50'	N 14° 32' 49"E
C 6	95° 03' 10"	20.00'	33.18'	21.85'	29.51'	N 40° 24' 18"W

LINE	BEARING	DISTANCE
L 1	S 04° 03' 41"W	6.46'
L 3	S 06° 57' 54"W	3.94'
L 5	N 06° 57' 54"E	5.26'
L 7	N 04° 03' 41"E	7.57'



**INGRESS AN EGRESS EASEMENT  
ACROSS THE THOMAS AND MARKER,  
CONSTRUCTION COMPANY 11.0 ACRE TRACT  
VOLUME 331, PAGE 332  
SECTION 32, TOWN 4, RANGE 14  
CITY OF BELLEFONTAINE AND  
LIBERTY TOWNSHIP  
LOGAN COUNTY, OHIO**

PREPARED FROM RECORDS BY:

*Jeffrey I. Lee*  
JEFFREY I. LEE  
PROFESSIONAL SURVEYOR 6359  
MAY 14, 1995



ORIGINAL STAMP IN GREEN

COPYRIGHT 1995 BY:  
**LEE SURVEYING & MAPPING CO.**  
143 East Columbus Avenue  
BELLEFONTAINE, OHIO 43311  
(513) 593-7335

D 259 LOWEESI L 435-3

2 WORKING DAYS  
**BEFORE YOU DIG**  
CALL TOLL FREE **800-362-2764**  
OHIO UTILITIES PROTECTION SERVICE.

INDEXED ON MAP  
8221 4P



Received 4/9/04 OK JCL

# Lee Surveying and Mapping Co., Inc.

Land Surveys • Topography • Subdivisions • Construction Layout

117 N. Madriver St.  
Bellefontaine OH 43311



Phone: (937) 593-7335  
Fax: (937) 593-7444

## THOMAS AND MARKER CONSTRUCTION COMPANY 0.009 ACRE

Lying in Section 32, Town 4, Range 14, City of Bellefontaine, Liberty Township, Logan County, Ohio.

Being out of the Thomas and Marker Construction Company Original 11.0 acre tract as deeded and described in Volume 331, Page 332 of the Logan County Records of Deeds and being more particularly described as follows:

Beginning at the railroad spike found at the intersection of center-lines of U.S. 68 (South Main Street)(80 feet wide) and Township road 200 (60 feet wide) (Allen Road) on the north line of Liberty Township, also, being the north line of Section 32.

THENCE, with the center-line of U.S. 68, S 4°-10'-00"E, a distance of 192.21 feet to a MAG nail found.

THENCE, with the north line of the BEF Reit, Inc. 0.959 acre tract (O.R. 279, Pg. 480), N 86°-03'-58"W, a distance of 247.60 feet to a 5/8 inch iron rod set at THE TRUE POINT OF BEGINNING.

THENCE, with the north line of the said 0.959 acre tract, N 86°-03'-58"W, a distance of 16.56 feet to a 5/8 inch iron rod set.

THENCE, with a curve to the right having a central angle of 4°-42'-44", a radius of 87.72 feet, a arc length of 7.21 feet, having a chord bearing N 25°-34'-49"E at a distance of 7.21 feet to a 5/8 inch iron rod set.

THENCE, N 27°-56'-35"E, a distance of 19.50 feet to a 5/8 inch iron rod set.

THENCE, with a curve to the left having a central angle of 20°-49'-03", a radius of 112.50 feet, a arc length of 40.87 feet, chord bearing N 17°-32'-01"E at distance of 40.65 feet to a 5/8 inch iron rod set.

THENCE, with the west line of the Ralph H. Root and Kathryn J. Root 0.997 acre tract (O.R. 690, Pg. 805), S 7°-08'-56"W, a distance of 64.13 feet to the point of beginning.

Containing 0.009 acres.

The basis for bearings is the center-line of U.S. 68 being S 4°-10'-00"E, and all other bearings are from angles and distances measured in a field survey by Lee Surveying and Mapping Co., Inc. on October 13, 2003.

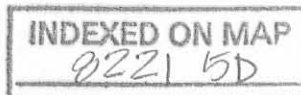


ORIGINAL STAMP IN GREEN

Description prepared by:

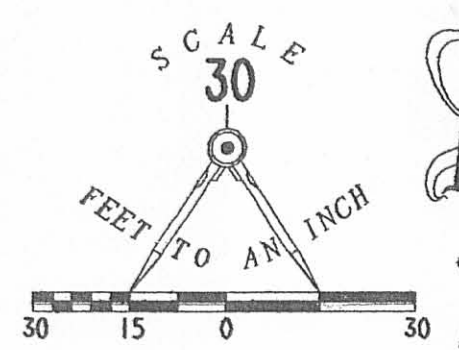
Jeffrey I. Lee  
Professional Surveyor 6359  
April 6, 2004

L1939



CURVE	DELTA ANGLE	RADIUS	ARC	TANGENT	CHORD	CHORD BEARING
C 1	20° 49' 03"	112.50'	40.87'	20.67'	40.65'	S 17° 32' 01" W
C 2	4° 42' 44"	87.72'	7.21'	3.61'	7.21'	S 25° 34' 49" W

- LEGEND
- 5/8 INCH IRON ROD SET
  - ⊗ RAILROAD SPIKE FOUND
  - ⊙ MAG NAIL FOUND



LAKE TOWNSHIP  
SECTION 33  
TOWNSHIP ROAD 200 (60 FEET WIDE) (ALLEN ROAD)

SECTION 32  
LIBERTY TOWNSHIP

THOMAS AND MARKER CONSTRUCTION COMPANY  
ORIGINAL 11.0 ACRES  
VOL. 331, PAGE 332

RALPH H. ROOT AND KATHRYN J. ROOT  
0.997 ACRE  
O.R. 690, PAGE 805

68  
BASIS FOR BEARINGS  
S 04° 10' 00" E  
192.21'  
(80 FEET WIDE)

A SURVEY OF A  
0.009 ACRE TRACT OUT OF THE  
THOMAS AND MARKER CONSTRUCTION COMPANY  
VOLUME 331, PAGE 332  
SECTION 32, TOWN 4, RANGE 14  
CITY OF BELLEFONTAINE  
LIBERTY TOWNSHIP  
LOGAN COUNTY, OHIO

CORPORATION LINE



0.009 ACRE

247.60'  
N 86° 03' 58" W



SURVEYED BY:  
*Jeffrey I. Lee*  
JEFFREY I. LEE  
PROFESSIONAL SURVEYOR 6359  
OCTOBER 13, 2003  
REVISED APRIL 6, 2004

COPYRIGHT 2004 BY:  
LEE SURVEYING & MAPPING CO., INC.  
117 North Madriver Street  
BELLEFONTAINE, OHIO 43311  
(937) 593-7335

2 WORKING DAYS  
BEFORE YOU DIG  
CALL TOLL FREE 800-362-2764  
OHIO UTILITIES PROTECTION SERVICE.

BEF REIT, INC  
0.959 ACRE  
O.R. 279, PG. 480

ADW D412 L1939 L-1939-3

INDEXED ON MAP  
8221 58

RECID 10-23-03 SKM OK

# Lee Surveying and Mapping Co., Inc.

Land Surveys • Topography • Subdivisions • Construction Layout

117 N. Madriver St.  
Bellefontaine OH 43311



Phone: (937) 593-7335  
Fax: (937) 593-7444

## THOMAS & MARKER CONSTRUCTION CO. 0.997 ACRE

Lying in Section 32, Town 4, Range 14, City of Bellefontaine, Liberty Township, Logan County, Ohio.

Being out of the Thomas and Marker Construction Company 11.0 acre tract as deeded and described in Volume 331, Page 332 of the Logan County Records of Deeds and being more particularly described as follows:

Beginning at a railroad spike found at the intersection of the center-lines of US Route 68 (South Main Street, 80 feet wide) and Township Road 200 (Allen Road, 40 feet wide).

THENCE, with the center-line of the said U.S. Route 68, S 04°-10'-00" E, a distance of 192.21 feet to a MAG nail set at the northeast corner of the Bob Evans Farms, Inc. 0.959 acre tract (O.R. 176, Pg. 37).

THENCE, with the north line of the said 0.959 acre tract, N 86°-03'58" W, a distance of 247.61 feet to a 5/8 inch iron rod set, passing a 5/8 inch iron rod set at 40.40 feet.

THENCE, N 07°-07'-31" E, a distance of 165.63 feet to a point.

THENCE, with a curve to the right having a central angle of 16°-42'-12", a radius of 20.00 feet, an arc length of 5.83 feet with a chord bearing N 15°-28'-41" E and a chord distance of 5.81 feet to a MAG nail set on the south right-of-way of Township Road 200.

THENCE, continuing with the said curve to the right having a central angle of 70°-14'-12", a radius of 20.00 feet, an arc length of 24.52 feet, a chord bearing N 58°-56'-38" E and a chord distance of 23.01 feet to a MAG nail set.

THENCE, N 04°-03'-05" E, a distance of 6.74 feet to a MAG nail set on the center-line of the said Township Road 200.

THENCE, with the said center-line of Township Road 200, S 85°-51'-18" E, a distance of 191.25 feet to the point of beginning.

Containing 0.997 acre, more or less, of which 0.251 acre is within the highway rights-of-way.

The basis for bearings is the center-line of U.S. Route 68 being S 04°-10'-00" E, and all other bearings are from angles and distances measured in a field survey by Lee Surveying and Mapping Co., Inc. on October 13, 2003.

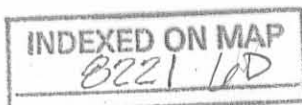


ORIGINAL STAMP IN GREEN

Description prepared by:

William K. Bruce  
Professional Surveyor 7437  
October 16, 2003

L-1939A



REC'D 5-31-95 *ang* OK ✓



# Lee Surveying and Mapping Co.



Farm Surveys • Lot Surveys • Topography • Subdivisions • Construction Layout

143 EAST COLUMBUS AVENUE  
BELLEFONTAINE, OHIO 43311

(513) 593-7335

JEFFREY I. LEE, P.S.

## THOMAS AND MARKER CONSTRUCTION COMPANY 25 FEET WIDE INGRESS/EGRESS EASEMENT

Lying in Section 32, Town 4, Range 14, City of Bellefontaine and Liberty Township, Logan County, Ohio.

Being an ingress and egress easement across the Thomas and Marker Construction Company 11.0 acre tract as deeded and described in Volume 331, Page 332 of the Logan County Records of Deeds and being more particularly described as follows:

Beginning at the intersection of center-lines of South Main Street (U.S. Route 68) and Allen Road (Township Road 200). The center-line of Allen Road is the Section Line between Sections 32 and 33.

THENCE, with the north line of Section 32 and the center-line of Allen Road, N 85°-56'-19" W, a distance of 191.25 feet to a point at the TRUE POINT OF BEGINNING.

THENCE, S 4°-03'-41" W, a distance of 6.46 feet to a point on the south edge of pavement.

THENCE, with a curve to the left having a central angle of 86°-56'-15", a radius of 20.00 feet with a chord bearing S 50°-35'-34" W, a chord distance of 27.52 feet to a point.

THENCE, S 7°-07'-26" W, a distance of 101.50 feet to a point.

THENCE, with a curve to the right having a central angle of 20°-49'-09", a radius of 112.50 feet with a chord bearing S 17°-32'-01" W, a chord distance of 40.65 feet to a point.

THENCE, S 27°-56'-35" W, a distance of 19.50 feet to a point.

THENCE, with a curve to the left having a central angle of 4°-43'-26", a radius of 87.50 feet with a chord bearing S 25°-34'-50" W, a chord distance of 7.21 feet to a point on the north line of the Bob Evans Farms, Inc. 0.959 acre tract (O.R. 176, Pg. 37).

THENCE, with the lines of the said 0.959 acre tract the following two courses:

N 86°-03'-58" W, a distance of 7.48 feet to a point.

S 6°-57'-57" W, a distance of 146.25 feet to a point on the southwest corner of the said 0.959 acre tract.

THENCE, with the north line of the Thomas and Marker 6.95 acre tract (Vol. 331, Pg. 332), N 86°-01'-28" W, a distance of 25.15 feet to a point.

THENCE, N 6°-57'-57" E, a distance of 3.21 feet to a point.

THENCE, with a curve to the right having a central angle of 1°-58'-37", a radius of 225.00 feet with a chord bearing N 7°-57'-18" E, a chord distance of 7.76 feet to a point.

THENCE, N 8°-56'-35" E, a distance of 116.45 feet to a point.

THENCE, with a curve to the right having a central angle of 19°-00'-00", a radius of 112.50 feet with a chord bearing N 18°-26'-35" E, a chord distance of 37.14 feet to a point.

THENCE, N 27°-56'-35" E, a distance of 19.50 feet to a point.

THENCE, with a curve to the left having a central angle of 20°-49'-09", a radius of 87.50 feet with a chord bearing N 17°-32'-01" E, a chord distance of 31.62 feet to a point.

THENCE, N 7°-07'-26" E, a distance of 96.92 feet to a point.

THENCE, with a curve to the left having a central angle of 93°-03'-45", a radius of 20.00 feet with a chord bearing N 39°-24'-27" W, a chord distance of 29.03 feet to a point on the south edge of pavement of Township Road 200.

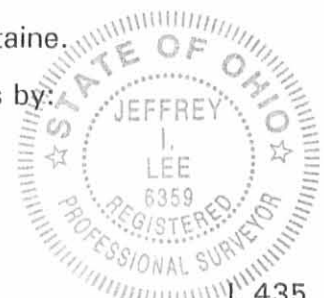
THENCE, N 4°-03'-41" E, a distance of 7.55 feet to a point on the north line of Section 32 and the center-line of Township Road 200.

THENCE, with the north line of Section 32, S 85°-56'-19" E, a distance of 65.15 feet to the point of beginning.

Containing 0.199 acre of which 0.102 acre is in the City of Bellefontaine.

Description prepared from records by:

*Jeffrey I. Lee*  
Jeffrey I. Lee  
Professional Surveyor 6359  
May 29, 1995



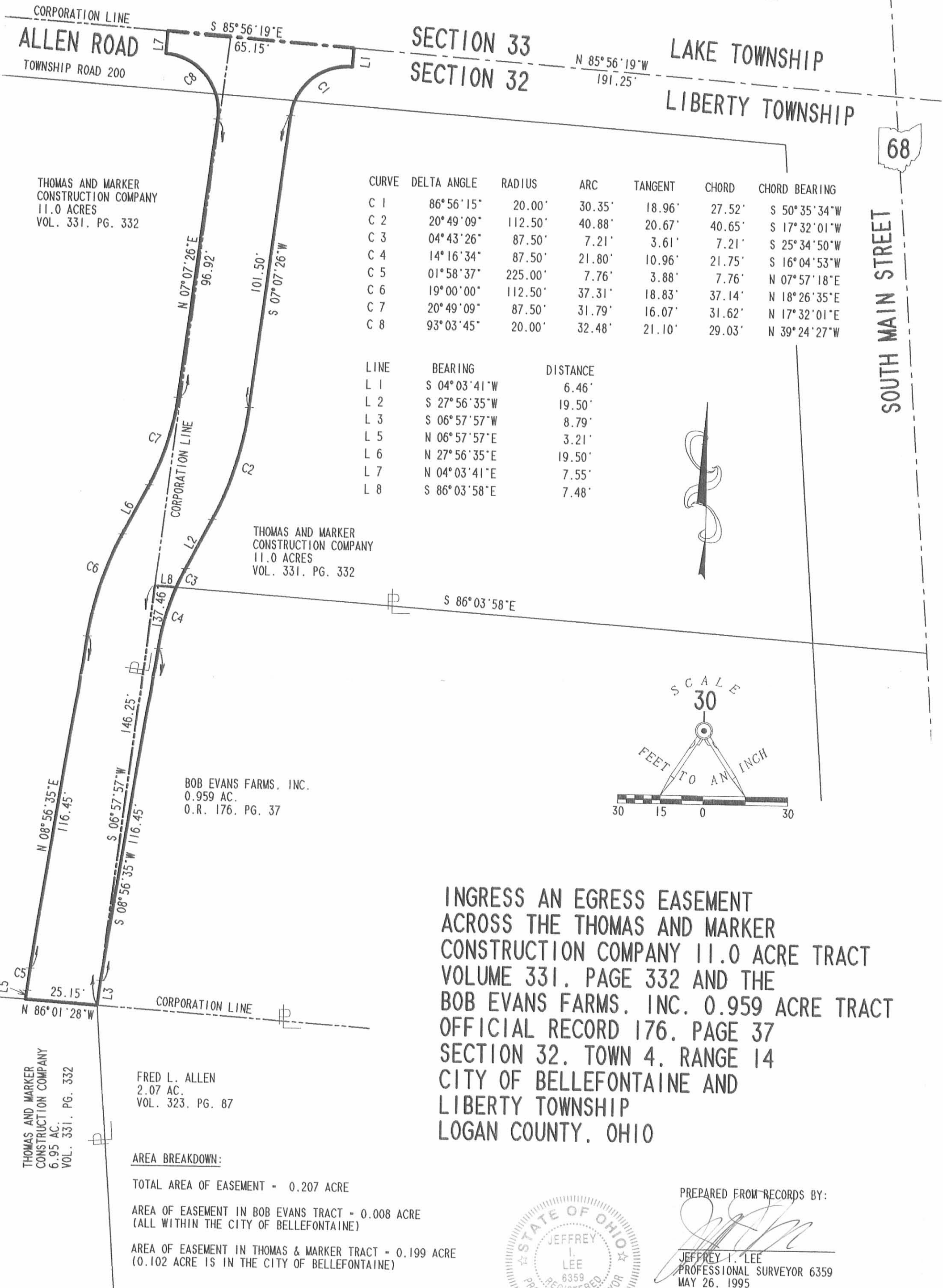
L 435

ORIGINAL STAMP IN GREEN

INDEXED ON MAP  
8221 1D



REC'D 5-30-95 BUNJ OK



THOMAS AND MARKER  
CONSTRUCTION COMPANY  
11.0 ACRES  
VOL. 331. PG. 332

THOMAS AND MARKER  
CONSTRUCTION COMPANY  
11.0 ACRES  
VOL. 331. PG. 332

BOB EVANS FARMS, INC.  
0.959 AC.  
O.R. 176. PG. 37

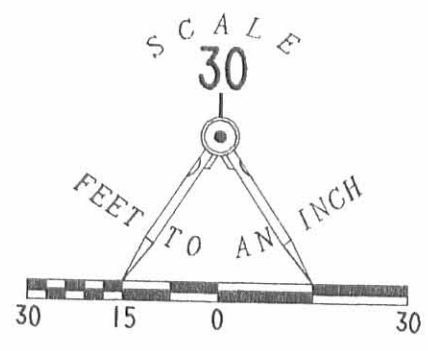
THOMAS AND MARKER  
CONSTRUCTION COMPANY  
6.95 AC.  
VOL. 331. PG. 332

FRED L. ALLEN  
2.07 AC.  
VOL. 323. PG. 87

**AREA BREAKDOWN:**  
TOTAL AREA OF EASEMENT - 0.207 ACRE  
AREA OF EASEMENT IN BOB EVANS TRACT - 0.008 ACRE  
(ALL WITHIN THE CITY OF BELLEFONTAINE)  
AREA OF EASEMENT IN THOMAS & MARKER TRACT - 0.199 ACRE  
(0.102 ACRE IS IN THE CITY OF BELLEFONTAINE)

CURVE	DELTA ANGLE	RADIUS	ARC	TANGENT	CHORD	CHORD BEARING
C 1	86° 56' 15"	20.00'	30.35'	18.96'	27.52'	S 50° 35' 34" W
C 2	20° 49' 09"	112.50'	40.88'	20.67'	40.65'	S 17° 32' 01" W
C 3	04° 43' 26"	87.50'	7.21'	3.61'	7.21'	S 25° 34' 50" W
C 4	14° 16' 34"	87.50'	21.80'	10.96'	21.75'	S 16° 04' 53" W
C 5	01° 58' 37"	225.00'	7.76'	3.88'	7.76'	N 07° 57' 18" E
C 6	19° 00' 00"	112.50'	37.31'	18.83'	37.14'	N 18° 26' 35" E
C 7	20° 49' 09"	87.50'	31.79'	16.07'	31.62'	N 17° 32' 01" E
C 8	93° 03' 45"	20.00'	32.48'	21.10'	29.03'	N 39° 24' 27" W

LINE	BEARING	DISTANCE
L 1	S 04° 03' 41" W	6.46'
L 2	S 27° 56' 35" W	19.50'
L 3	S 06° 57' 57" W	8.79'
L 5	N 06° 57' 57" E	3.21'
L 6	N 27° 56' 35" E	19.50'
L 7	N 04° 03' 41" E	7.55'
L 8	S 86° 03' 58" E	7.48'



**INGRESS AN EGRESS EASEMENT  
ACROSS THE THOMAS AND MARKER  
CONSTRUCTION COMPANY 11.0 ACRE TRACT  
VOLUME 331. PAGE 332 AND THE  
BOB EVANS FARMS, INC. 0.959 ACRE TRACT  
OFFICIAL RECORD 176. PAGE 37  
SECTION 32. TOWN 4. RANGE 14  
CITY OF BELLEFONTAINE AND  
LIBERTY TOWNSHIP  
LOGAN COUNTY, OHIO**

PREPARED FROM RECORDS BY:



*Jeffrey I. Lee*  
JEFFREY I. LEE  
PROFESSIONAL SURVEYOR 6359  
MAY 26, 1995

COPYRIGHT 1995 BY:  
**LEE SURVEYING & MAPPING CO.**  
143 East Columbus Avenue  
BELLEFONTAINE, OHIO 43311  
(513) 593-7335

2 WORKING DAYS  
**BEFORE YOU DIG**  
CALL TOLL FREE **800-362-2764**  
OHIO UTILITIES PROTECTION SERVICE.

INDEXED ON MAP  
8221 1P

**BOB EVANS FARMS, INC.**  
**0.545 ACRE**

Situated in the State of Ohio, County of Logan, Township of Liberty, City of Bellefontaine, located in part of Section 32, Township 4 (Liberty Township), Range 14 of the Between the Miamis Survey, being part of the 18.322 acres of land described in the deed to Lowe's Home Centers, Inc., recorded in Official Record 284, Page 303 (record references to those of the Recorder's Office, Logan County, Ohio), and being more particularly described as follows:

Commencing at a railroad spike found at the intersection of the center-lines of South Main Street (U.S. Route 68) and Allen Road (Township Road 200), said Road being on the line common to Sections 32 and 33;

thence southerly with said center-line of South Main Street, South 4°10'00" East, 380.43 feet to a mag nail found at the southeasterly corner of that 0.276 acre tract of land described in the deed to BEF REIT, Inc., recorded in Official Record 294, Page 79, being a northeasterly corner of said 18.322 acres, and being the TRUE POINT OF BEGINNING:

thence continuing southerly with said center-line of South Main Street, South 4°10'00" East, 46.00 feet to a PK nail set;

thence westerly through said 18.322 acres, South 85°50'00" West, 26.95 feet to a point of curvature, said point being referenced by an iron pipe set South 85°50'00" West, 0.50 feet;

thence generally following an existing back of curb line through said 18.322 acres, the following eight (8) courses and distances:

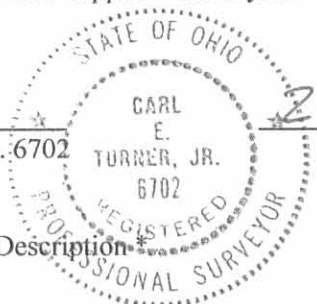
1. South 41°17'46" West, 79.17 feet along the arc of a non-tangent curve to the right (Delta = 89°10'00", Radius = 50.87 feet & bears South 86°42'46" West), (passing a point in the westerly right-of-way line of said Street at a chord bearing and distance of South 17°15'48" West, 35.71 feet) a chord distance of 71.42 feet to a point of tangency, said point being referenced by an iron pipe set North 3°57'09" West, 0.50 feet;
2. South 86°02'51" West, 97.75 feet to a point of curvature, said point being referenced by an iron pipe set North 3°57'09" West, 0.50 feet;
3. North 49°33'09" West, 76.42 feet along the arc of a curve to the right (Delta = 88°48'00", Radius = 49.31 feet & bears North 3°57'09" West) a chord distance of 69.00 feet to the point of tangency of said curve, said point being referenced by an iron pipe set North 84°50'51" East, 0.50 feet;
4. North 5°09'09" West, 31.09 feet to a point of curvature, said point being referenced by an iron pipe set North 84°50'51" East, 0.50 feet;
5. North 49°28'41" West, 77.97 feet along the arc of a curve to the left (Delta = 88°39'05", Radius = 50.39 feet & bears South 84°50'51" West) a chord distance of 70.42 feet to a point of tangency, said point being referenced by an iron pipe set North 3°48'14" West, 0.50 feet;
6. South 86°11'46" West, 7.97 feet to a point of curvature, said point being referenced by an iron pipe set North 3°48'14" West, 0.50 feet;
7. North 43°07'46" West, 34.88 feet along the arc of a curve to the right (Delta = 101°20'55", Radius = 19.72 feet & bears North 3°48'14" West) a chord distance of 30.51 feet to a point of tangency; And,
8. North 7°29'36" East, 26.43 feet to a point at the westerly corner common to said 0.276 acre tract and that 0.959 acre tract of land described in the deed to BEF REIT, Inc., recorded in Official Record 279, Page 480, being a northeasterly corner of said 18.322 acres, and being a southeasterly corner of the remainder of that original 11.00 acre tract of land described in the deed to Thomas & Marker Construction Co., recorded in Deed Volume 331, Page 332, being also a corner of the City of Bellefontaine Corporation Line, said corner being referenced by an iron pipe set on the line common to said 0.276 & 0.959 acre tracts, located South 86°00'28" East, 0.50 feet;

thence southerly along the westerly line of said 0.276 acre tract, South 4°11'00" East, 40.41 feet to a 5/8" rebar capped LEE-6359 found at the southwesterly corner of said 0.276 acre tract;

thence easterly along the southerly line of said 0.276 acre tract, South 86°00'28" East, (passing an iron pipe set in said westerly right-of-way line of South Main Street at 259.75 feet & a 5/8" rebar capped LEE-6359 found at 269.85 feet) a distance of 300.16 feet returning to the 'True Point of Beginning,' containing 0.545 of an acre of land (of which 0.051 of an acre lies within the current right-of-way of South Main Street), more or less, as surveyed and described in June of 2006, by Carl E. Turner Jr., Registered Professional Surveyor No. S-6702.

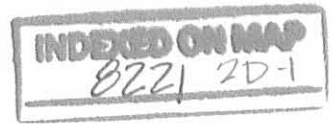
Bearings are referenced to the deed bearing for the centerline of South Main Street (U.S. 68), (i.e. S 4°10'00"E), which is a 1°40'20" counterclockwise rotation from GRID NORTH of the Ohio State Plane Coordinate System (North Zone), as determined by GPS observations. Iron pipes called for as set are 3/4" I.D., 30 inches in length, driven flush with the ground, and capped with a yellow plastic plug inscribed "C. TURNER/PS-6702."

By Carl E. Turner Jr.  
Carl E. Turner Jr., Professional Surveyor No. 6702



26 June 2006  
Date

\* End of Description \*



REC'D 7-3-06 SMY OK

**BOB EVANS FARMS, INC.**  
1.235 ACRES

Situated in the State of Ohio, County of Logan, City of Bellefontaine, located in part of Section 32, Township 4 (Liberty Township), Range 14 of the Between the Miamis Survey, being all of the 0.959 & 0.276 acre tracts of land described in the deeds to BEF REIT, Inc., recorded in Official Record 279, Page 480 and Official Record 294, Page 79, respectively (record references to those of the Recorder's Office, Logan County, Ohio), and being more particularly described as follows:

Commencing at a railroad spike found at the intersection of the center-lines of South Main Street (U.S. Route 68) and Allen Road (Township Road 200), said Road being on the line common to Sections 32 and 33;

thence southerly with said center-line of South Main Street, South 4°10'00" East, 192.21 feet to a mag nail found at the northeasterly corner of said 0.959 acre tract, being the TRUE POINT OF BEGINNING:

thence continuing southerly with said center-line of South Main Street, South 4°10'00" East, (passing a mag nail found at the easterly corner common to said 0.959 & 0.276 acre tracts at 147.81 feet) a distance of 188.22 feet to a mag nail found at the southeasterly corner of said 0.276 acre tract, being a northeasterly corner of the 18.322 acres of land described in the deed to Lowe's Home Centers, Inc., recorded in Official Record 284, Page 303;

thence westerly along the southerly line of said 0.276 acre tract, being a northerly line of said 18.322 acres, North 86°00'28" West, (passing a 5/8" rebar-capped LEE-6359 found at 30.31 feet & an iron pipe set at 40.41 feet) a distance of 300.16 feet to a 5/8" rebar-capped LEE-6359 found 1 foot deep at the southwesterly corner of said 0.276 acre tract, being a corner of said 18.322 acres;

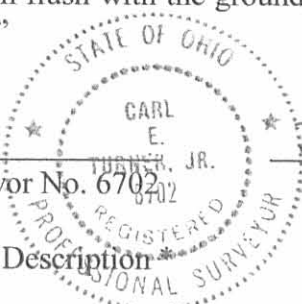
thence northerly along the westerly line of said 0.276 acre tract, being an easterly line of said 18.322 acres, North 4°11'00" West, 40.41 feet to the westerly corner common to said 0.276 & 0.959 acre tracts, being a northeasterly corner of said 18.322 acres, and being a southeasterly corner of the remainder of that original 11.00 acre tract of land described in the deed to Thomas & Marker Construction Co., recorded in Deed Volume 331, Page 332, being also a corner of the City of Bellefontaine Corporation Line, said corner being referenced by an iron pipe set on the line common to said 0.276 & 0.959 acre tracts, located South 86°00'28" East, 0.50 feet;

thence northerly along the westerly line of said 0.959 acre tract, being an easterly line of said remainder tract, being also a westerly Corporation Line, North 6°57'21" East, 146.17 feet to a mag nail found at the northwesterly corner of said 0.959 acre tract, being a corner of said remainder tract;

thence easterly along the northerly line of said 0.959 acre tract, being a southerly line of said remainder tract, and the southerly line of the 0.009 acre and 0.997 acre tracts described in the deeds to Ralph H. & Kathryn J. Root, recorded in Official Record 743, Page 740 and Official Record 690, Page 805, respectively, South 86°04'44" East, (passing 5/8" rebars-capped LEE-6359 found at 24.03 feet & in the said westerly right-of-way line of South Main Street at 231.24 feet) a distance of 271.64 feet returning to the 'True Point of Beginning,' containing 1.235 acres of land (of which 0.173 of an acre lies within the current right-of-way of South Main Street), more or less, as surveyed and described in June of 2006, by Carl E. Turner Jr., Registered Professional Surveyor No. S-6702.

Bearings are referenced to the deed bearing for the centerline of South Main Street (U.S. 68), (i.e. S 4°10'00"E), which is a 1°40'20" counterclockwise rotation from GRID NORTH of the Ohio State Plane Coordinate System (North Zone), as determined by GPS observations. Iron pipes called for as set are 3/4" I.D., 30 inches in length, driven flush with the ground, and capped with a yellow plastic plug inscribed "C. TURNER/PS-6702."

By Carl E. Turner Jr.  
Carl E. Turner Jr., Professional Surveyor No. 6702  
Date 26 June 2006



\* End of Description \*

INDEXED ON MAP  
8221 2D-2



REC'D 7-3-06 SMY OK

**BOB EVANS FARMS, INC.**  
**1.780 ACRES**

Situated in the State of Ohio, County of Logan, City of Bellefontaine, located in part of Section 32, Township 4 (Liberty Township), Range 14 of the Between the Miamis Survey, being all of the 0.959 & 0.276 acre tracts of land described in the deeds to BEF REIT, Inc., recorded in Official Record 279, Page 480 and Official Record 294, Page 79, respectively, and being part of the 18.322 acres of land described in the deed to Lowe's Home Centers, Inc., recorded in Official Record 284, Page 303 (record references to those of the Recorder's Office, Logan County, Ohio), and being more particularly described as follows:

Commencing at a railroad spike found at the intersection of the center-lines of South Main Street (U.S. Route 68) and Allen Road (Township Road 200), said Road being on the line common to Sections 32 and 33;

thence southerly with said center-line of South Main Street, South 4°10'00" East, 192.21 feet to a mag nail found at the northeasterly corner of said 0.959 acre tract, being the TRUE POINT OF BEGINNING:

thence continuing southerly with said center-line of South Main Street, South 4°10'00" East, (passing a mag nail found at the southeasterly corner of said 0.959 acre tract at 147.81 feet & at the southeasterly corner of said 0.276 acre tract at 188.22 feet) a distance of 234.22 feet to a PK nail set;

thence westerly through said 18.322 acres, South 85°50'00" West, 26.95 feet to a point of curvature, said point being referenced by an iron pipe set South 85°50'00" West, 0.50 feet;

thence generally following an existing back of curb line through said 18.322 acres, the following eight (8) courses and distances:

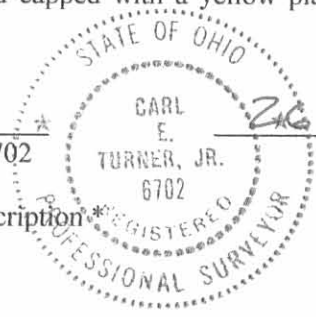
1. South 41°17'46" West, 79.17 feet along the arc of a non-tangent curve to the right (Delta = 89°10'00", Radius = 50.87 feet & bears South 86°42'46" West), (passing a point in the westerly right-of-way line of said Street at a chord bearing and distance of South 17°15'48" West, 35.71 feet) a chord distance of 71.42 feet to a point of tangency, said point being referenced by an iron pipe set North 3°57'09" West, 0.50 feet;
2. South 86°02'51" West, 97.75 feet to a point of curvature, said point being referenced by an iron pipe set North 3°57'09" West, 0.50 feet;
3. North 49°33'09" West, 76.42 feet along the arc of a curve to the right (Delta = 88°48'00", Radius = 49.31 feet & bears North 3°57'09" West) a chord distance of 69.00 feet to the point of tangency of said curve, said point being referenced by an iron pipe set North 84°50'51" East, 0.50 feet;
4. North 5°09'09" West, 31.09 feet to a point of curvature, said point being referenced by an iron pipe set North 84°50'51" East, 0.50 feet;
5. North 49°28'41" West, 77.97 feet along the arc of a curve to the left (Delta = 88°39'05", Radius = 50.39 feet & bears South 84°50'51" West) a chord distance of 70.42 feet to a point of tangency, said point being referenced by an iron pipe set North 3°48'14" West, 0.50 feet;
6. South 86°11'46" West, 7.97 feet to a point of curvature, said point being referenced by an iron pipe set North 3°48'14" West, 0.50 feet;
7. North 43°07'46" West, 34.88 feet along the arc of a curve to the right (Delta = 101°20'55", Radius = 19.72 feet & bears North 3°48'14" West) a chord distance of 30.51 feet to a point of tangency; And,
8. North 7°29'36" East, 26.43 feet to a point at the westerly corner common to said 0.276 & 0.959 acre tracts, being a northeasterly corner of said 18.322 acres, and being a southeasterly corner of the remainder of that original 11.00 acre tract of land described in the deed to Thomas & Marker Construction Co., recorded in Deed Volume 331, Page 332, being also a corner of the City of Bellefontaine Corporation Line, said corner being referenced by an iron pipe set on the line common to said 0.276 & 0.959 acre tracts, located South 86°00'28" East, 0.50 feet;

thence northerly along the westerly line of said 0.959 acre tract, being an easterly line of said remainder tract, being also a westerly Corporation Line, North 6°57'21" East, 146.17 feet to a mag nail found at the northwesterly corner of said 0.959 acre tract, being a corner of said remainder tract;

thence easterly along the northerly line of said 0.959 acre tract, being a southerly line of said remainder tract, and the southerly line of the 0.009 acre and 0.997 acre tracts described in the deeds to Ralph H. & Kathryn J. Root, recorded in Official Record 743, Page 740 and Official Record 690, Page 805, respectively, South 86°04'44" East, (passing 5/8" rebars-capped LEE-6359 found at 24.03 feet & in the said westerly right-of-way line of South Main Street at 231.24 feet) a distance of 271.64 feet returning to the 'True Point of Beginning,' containing 1.780 acres of land (of which 0.224 of an acre lies within the current right-of-way of South Main Street), more or less, as surveyed and described in June of 2006, by Carl E. Turner Jr., Registered Professional Surveyor No. S-6702.

Bearings are referenced to the deed bearing for the centerline of South Main Street (U.S. 68), (i.e. S 4°10'00"E), which is a 1°40'20" counterclockwise rotation from GRID NORTH of the Ohio State Plane Coordinate System (North Zone), as determined by GPS observations. Iron pipes called for as set are 3/4" I.D., 30 inches in length, driven flush with the ground, and capped with a yellow plastic plug inscribed "C. TURNER/PS-6702."

By Carl E. Turner Jr.  
Carl E. Turner Jr., Professional Surveyor No. 6702



26 June 2006  
Date

\* End of Description \*





REV'D 7-3-06 EMM/OL

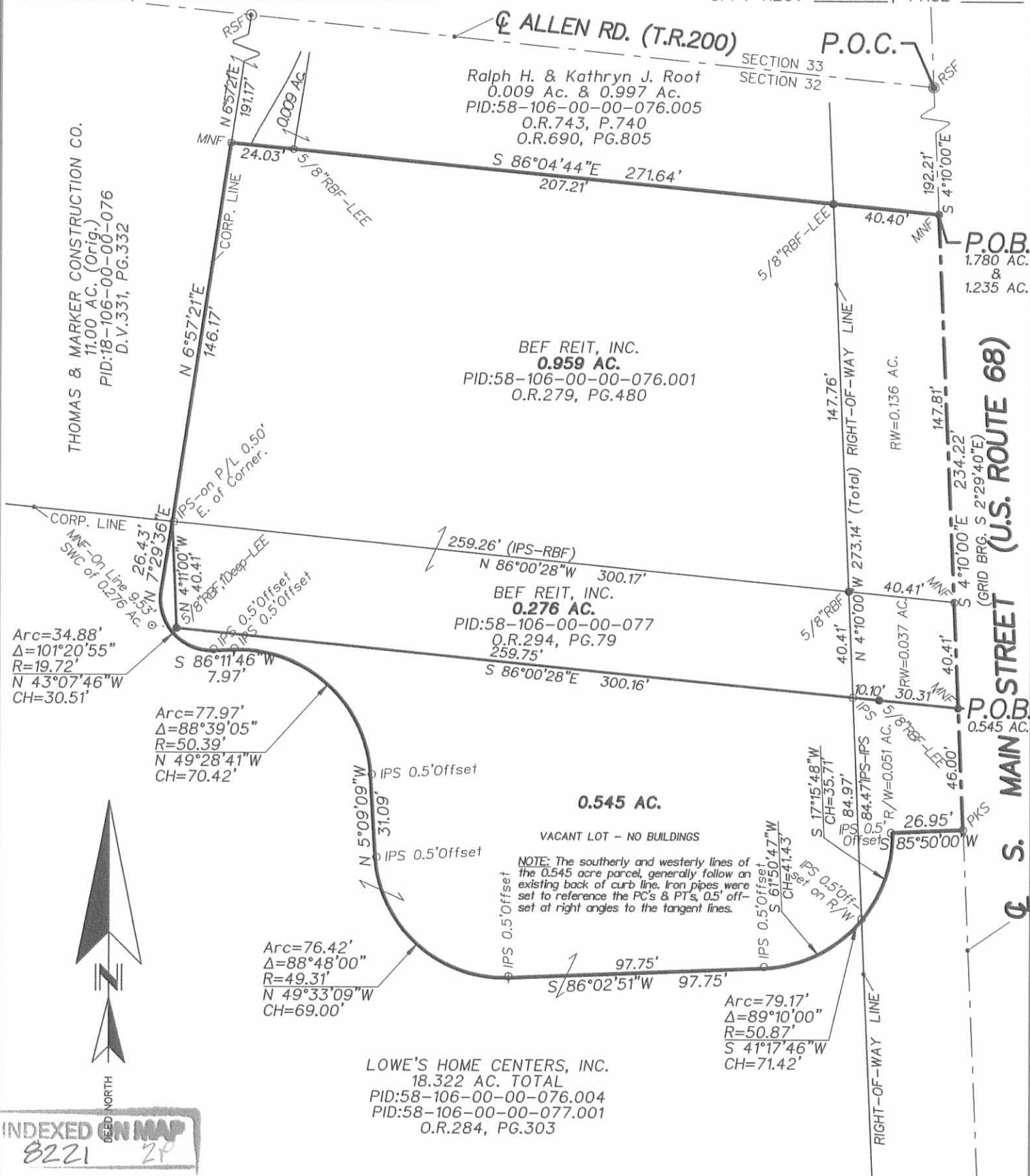
TITLE:

**SURVEY OF 1.780 ACRES**  
**LOCATED IN SECTION 32, TOWNSHIP 4 (LIBERTY TWP.), RANGE 14**  
**BETWEEN THE MIAMIS SURVEY**  
**CITY OF BELLEFONTAINE, LOGAN COUNTY, OHIO**

PREPARED EXCLUSIVELY FOR:  
BOB EVANS FARMS, INC.  
BEF REIT, INC., and  
LANDAMERICA/LAWYERS TITLE INSURANCE CORP.

5, 9 & 20 MAY 2006 (Field)  
13 JUNE 2006 (Plat)  
Rev. 26 June '06

OFF. REC. 284, PAGE 303  
OFF. REC. 279, PAGE 480  
OFF. REC. 294, PAGE 79



INDEXED ON MAP  
8221 2P

We Hereby Declare that the attached plat was prepared from an actual survey of the premises, that to the best of our knowledge, information and belief, correctly shows the location of the boundaries. Only those easements specifically brought to our attention, or those which we had special knowledge of are shown hereon. Any zoning, set back or sideyard data, underground public or quasi public utilities or substructures shown hereon are informational only.

**BASIS OF BEARINGS:** Bearings are referenced to the deed bearing for the centerline of S. Main Street (US 68), (i.e. S 4°10'00"E), which is a 1°40'20" counterclockwise rotation from Grid North, Ohio SPC System (North Zone) as determined by GPS observations.

50 40 30 20 10 0 50 100  
GRAPHIC SCALE: 1"=50'

SURVEY MONUMENTS: Found (F)=●, Set (S)=○. IP=Iron Pipe (ID); SP=Solid Pin (OD); RB=Rebar; RS=Railroad Spike; MN=Mag Nail; PK=PK Nail & IPS=3/4" ID iron pipe set flush with the ground & capped with a yellow plastic plug inscribed C. TURNER/P.S. 6702.



By: *Carl E. Turner, Jr.*  
CARL E. TURNER, JR.  
REGISTERED PROFESSIONAL SURVEYOR No. S-6702

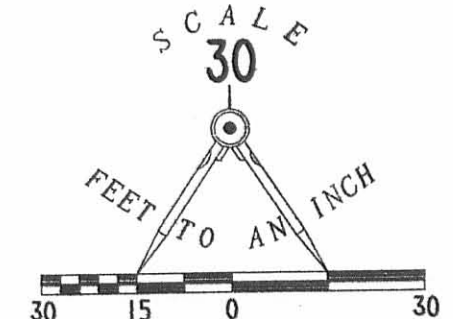
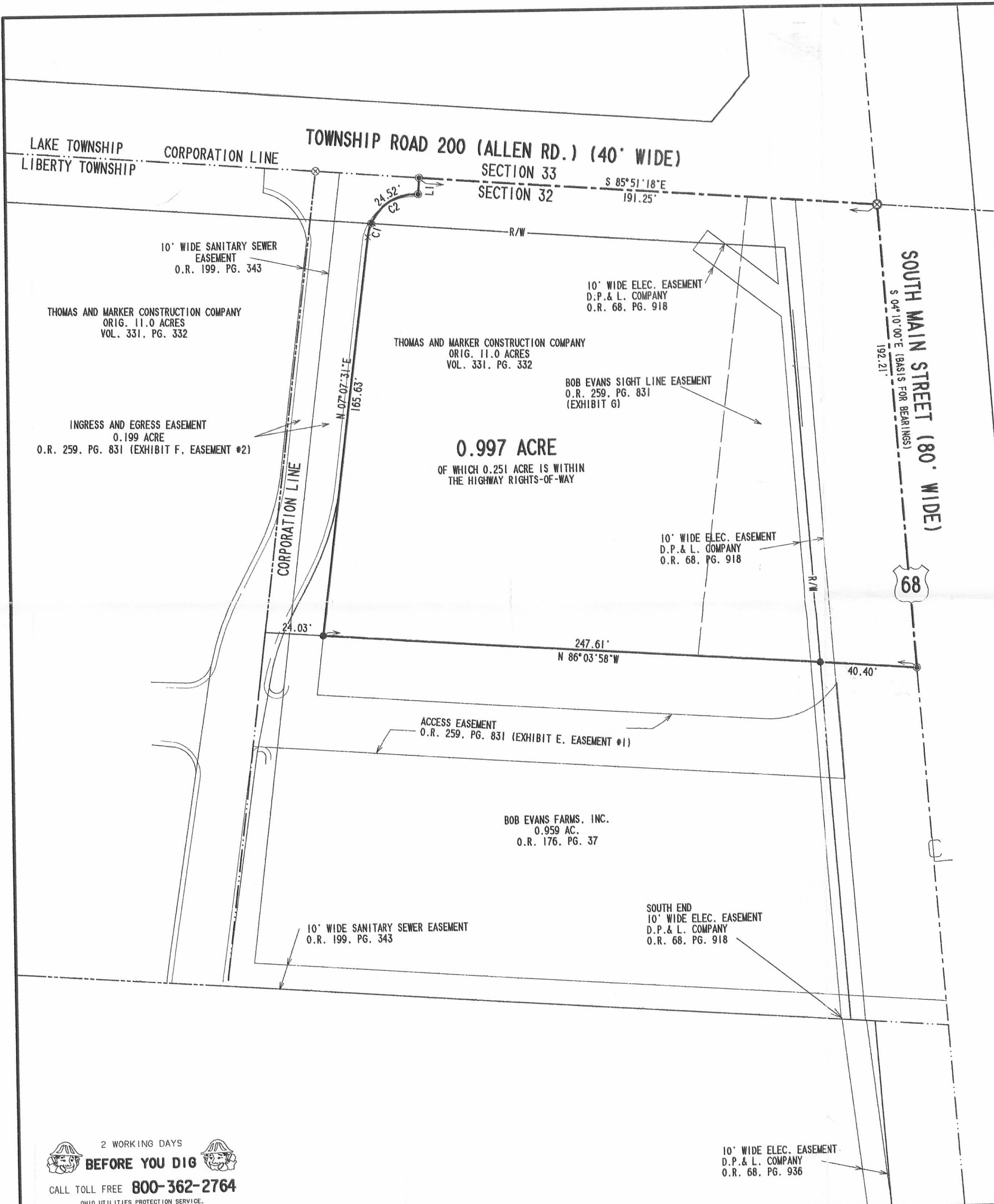
NOT AN AUTHORIZED DOCUMENT UNLESS SURVEYOR'S SEAL APPEARS IN RED INK.

REV'D 10-23-03 SWY OK

CURVE	DELTA ANGLE	RADIUS	ARC	TANGENT	CHORD	CHORD BEARING
C 1	16° 42' 12"	20.00'	5.83'	2.94'	5.81'	N 15° 28' 41" E
C 2	70° 14' 02"	20.00'	24.52'	14.07'	23.01'	N 58° 56' 38" E

LINE	BEARING	DISTANCE
L 1	N 04° 03' 05" E	6.74'



- LEGEND**
- 5/8" IRON ROD SET W/ PLASTIC I.D. CAP STAMPED "LEE PS6359"
  - ⊗ RAILROAD SPIKE FOUND
  - ⊙ MAG NAIL SET

**SURVEY OF 0.997 ACRE OUT OF THE THOMAS AND MARKER CONSTRUCTION COMPANY 11.0 ACRE TRACT VOLUME 331, PAGE 332 SECTION 32, TOWN 4, RANGE 14 CITY OF BELLEFONTAINE LIBERTY TOWNSHIP LOGAN COUNTY, OHIO**



SURVEYED BY: *W.K.B.*  
**WILLIAM K. BRUCE**  
 PROFESSIONAL SURVEYOR 7437  
 OCTOBER 13, 2003

COPYRIGHT 2003 BY:  
**LEE SURVEYING & MAPPING CO., INC.**  
 117 North Madriver Street  
 BELLEFONTAINE, OHIO 43311  
 (937) 593-7335

D 410 L1939-A L 1939A2-3

2 WORKING DAYS  
**BEFORE YOU DIG**  
 CALL TOLL FREE **800-362-2764**  
 OHIO UTILITIES PROTECTION SERVICE.

INDEXED ON MAP  
 82214P

Received 7-20-92 OK



# Lee Surveying and Mapping Co.



Farm Surveys • Lot Surveys • Topography • Subdivisions • Construction Layout

143 EAST COLUMBUS AVENUE  
BELLEFONTAINE, OHIO 43311

(513) 593-7335

JEFFREY I. LEE, P.S.

## THOMAS AND MARKER CONSTRUCTION COMPANY (TRACT 'A') 0.959 ACRE

Lying in Section 32, Town 4, Range 14, Liberty Township, Logan County, Ohio.

Being out of the Thomas and Marker Construction Company 11.0 acre tract as deeded and described in Volume 331, Page 332 of the Logan County Records of Deeds and being more particularly described as follows:

Beginning at a railroad spike found at the intersection of center-lines of U.S. Route 68 (South Main Street) and Township Road 200 (Allen Road).

THENCE, with the center-line of said Route 68, S 4°-10'-00" E, a distance of 192.21 feet to a PK spike set at the TRUE POINT OF BEGINNING.

THENCE, with the center-line of said Route 68, S 4°-10'-00" E, a distance of 147.74 feet to a PK spike set.

THENCE, with the north line of the Fred Allen 2.07 acre tract (Vol. 323, Pg. 87), N 86°-01'-28" W, a distance of 300.19 feet to a 5/8 inch iron rod found.

THENCE, N 6°-57'-57" E, a distance of 146.25 feet to a 5/8 inch iron rod set.

THENCE, S 86°-03'-58" E, a distance of 271.64 feet to the point of beginning.

Containing 0.959 acres of which 0.102 acre is within the highways right-of-way.

The basis for bearings is based upon the center-line of U.S. Route 68 being S 4°-10'-00" E, and all other bearings are from angles and distances measured in a field survey by Lee Surveying and Mapping Company completed on September 5, 1991.

Description prepared by:



*Jeffrey I. Lee*

Jeffrey I. Lee  
Professional Surveyor 6359  
July 20, 1992

L 1939

ORIGINAL STAMP IN GREEN

INDEXED ON MAP  
822/ 7D-1



# Lee Surveying and Mapping Co.



Farm Surveys • Lot Surveys • Topography • Subdivisions • Construction Layout

143 EAST COLUMBUS AVENUE  
BELLEFONTAINE, OHIO 43311

(513) 593-7335

JEFFREY I. LEE, P.S.

THOMAS AND MARKER CONSTRUCTION COMPANY (TRACT 'B')  
1.107 ACRES

Lying in Section 32, Town 4, Range 14, Liberty Township, Logan County, Ohio.

Being out of the Thomas and Marker Construction Company 11.0 acre tract as deeded and described in Volume 331, Page 332 of the Logan County Records of Deeds and being more particularly described as follows:

Beginning at a railroad spike found at the intersection of center-lines of U.S. Route 68 (South Main Street) and Township Road 200 (Allen Road).

THENCE, with the center-line of said Route 68, S 4°-10'-00" E, a distance of 192.21 feet to a PK spike set.

THENCE, N 86°-03'-58" W, a distance of 271.64 feet to a 5/8 inch iron rod set.

THENCE, N 6°-57'-54" E, a distance of 171.04 feet to a railroad spike set on the center-line of Township Road 200, passing a 5/8 inch iron rod set at 141.00 feet.

THENCE, with the center-line of Township Road 200, the north line of said Section 32, the south corporation line of the City of Bellefontaine, and the north line of Liberty Township, S 85°-56'-19" E, a distance of 234.45 feet to the point of beginning.

Containing 1.107 acres of which 0.227 acre is within the highways right-of-way.

No building shall be constructed closer to U. S. Route 68 than a line 180.0 feet distant from and parallel to the west line of this tract.

The basis for bearings is based upon the center-line of U.S. Route 68 being S 4°-10'-00" E, and all other bearings are from angles and distances measured in a field survey by Lee Surveying and Mapping Company completed on September 5, 1991.

Description prepared by:



*Jeffrey I. Lee*  
Jeffrey I. Lee  
Professional Surveyor 6359  
July 20, 1992

L 1939

ORIGINAL STAMP IN GREEN

INDEXED ON MAP  
8221 7D-2





# Lee Surveying and Mapping Co.



Farm Surveys • Lot Surveys • Topography • Subdivisions • Construction Layout

143 EAST COLUMBUS AVENUE  
BELLEFONTAINE, OHIO 43311

(513) 593-7335

JEFFREY I. LEE, P.S.

## THOMAS AND MARKER CONSTRUCTION COMPANY (TRACT 'A') EASEMENT 'A'

Lying in Section 32, Town 4, Range 14, Liberty Township, Logan County, Ohio.

Being part of the Thomas and Marker Construction Company 11.0 acre tract as deeded and described in Volume 331, Page 332 of the Logan County Records of Deeds and being more particularly described as follows:

Beginning at a 5/8 inch iron rod set at the northwest corner of a 0.959 acre tract out of the southeast corner of said 11.0 acre tract.

THENCE, with the north line of said 0.959 acre tract, S 86°-03'-58" E, a distance of 24.03 feet to a 5/8 inch iron rod set.

THENCE, S 6°-57'-54" W, a distance of 24.03 feet to a point.

THENCE, along the north line of the existing asphalt driveway, S 86°-03'-58" E, a distance of 191.48 feet to a 3/4 inch iron rod set.

THENCE, with a curve to the left, having a central angle of 55°-33'-19", a radius of 34.41 feet, an arc distance of 33.37 feet and having a chord bearing N 66°-09'-22" E, a distance of 32.07 feet to a 3/4 inch iron rod set on the west right-of-way of U. S. Route 68 (30.0 feet at right angles west of the center-line).

THENCE, with the west right-of-way of U. S. Route 68, S 4°-10'-00" E, a distance of 39.34 feet to a point.

THENCE, N 86°-03'-58" W, a distance of 250.71 feet to a point on the west line of the said 0.959 acre tract.

THENCE, with the west line of the said 0.959 acre tract, N 6°-57'-57" E, a distance of 48.07 feet to the point of beginning.

Description prepared by:



*Jeffrey I. Lee*  
Jeffrey I. Lee  
Professional Surveyor 6359  
July 20, 1992

L 1939

ORIGINAL STAMP IN GREEN

INDEXED ON MAP  
822, 7D-3



# Lee Surveying and Mapping Co.



Farm Surveys • Lot Surveys • Topography • Subdivisions • Construction Layout

143 EAST COLUMBUS AVENUE  
BELLEFONTAINE, OHIO 43311

(513) 593-7335

JEFFREY I. LEE, P.S.

## THOMAS AND MARKER CONSTRUCTION COMPANY (TRACT 'B') EASEMENT 'B'

Lying in Section 32, Town 4, Range 14, Liberty Township, Logan County, Ohio.

Being part of the Thomas and Marker Construction Company 11.0 acre tract as deeded and described in Volume 331, Page 332 of the Logan County Records of Deeds and being more particularly described as follows:

Beginning at a 5/8 inch iron rod set at the southwest corner of a 1.107 acre tract out of the northeast corner of the said 11.0 acre tract.

THENCE, with the west line of said 1.107 acre tract, N 6°-57'-54" E, a distance of 171.04 feet to the south right-of-way of Township Road 200 (Allen Road, 40 feet wide) passing a 5/8 inch iron rod set at 161.04 feet.

THENCE, with the south right-of-way of Township Road 200, S 85°-56'-20" E, a distance of 24.03 feet to a point.

THENCE, S 6°-57'-54" W, a distance of 170.98 feet to a 5/8 inch iron rod set on the south line of the said 1.107 acre tract, passing a 5/8 inch iron rod set at 10.00 feet.

THENCE, with the south line of the said 1.107 acre tract and the north line of a 0.959 acre tract, N 86°-03'-58" W, a distance of 24.03 feet to the point of beginning.

Description prepared by:



*Jeffrey I. Lee*  
Jeffrey I. Lee  
Professional Surveyor 6359  
July 20, 1992

L 1939

ORIGINAL STAMP IN GREEN

INDEXED ON MAP  
822/ 70-4

LAKE TOWNSHIP SEC. 33. T-4. R-14  
 LIBERTY TOWNSHIP SEC. 32. T-4. R-14

68

CORPORATION LINE  
 TOWNSHIP ROAD 200 (40') CITY OF BELLEFONTAINE

DRIVEWAY EASEMENT 'B'

TRACT 'B'  
 1.107 ACRES  
 OF WHICH 0.227 ACRE IS  
 WITHIN THE HIGHWAYS  
 RIGHT-OF-WAY

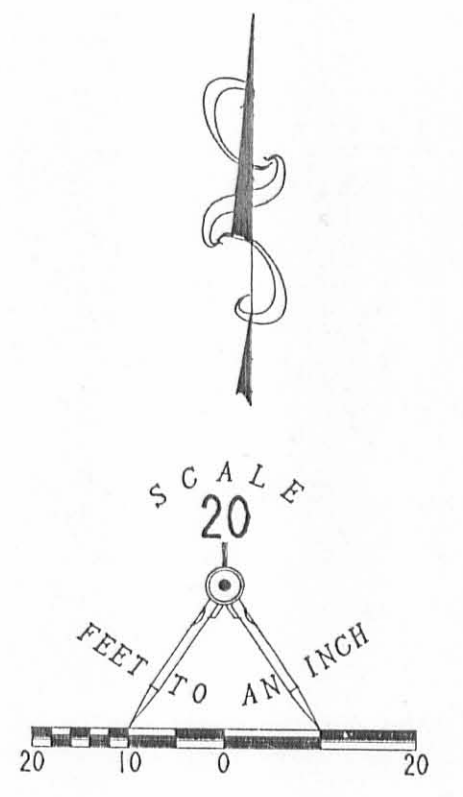
DRIVEWAY EASEMENT 'A'

TRACT 'A'  
 0.959 ACRES  
 OF WHICH 0.102 ACRE IS  
 WITHIN THE HIGHWAY  
 RIGHT-OF-WAY

SOUTH MAIN STREET

CORPORATION LINE

68



- LEGEND
- ⊙ RAILROAD SPIKE FOUND
  - 3/4" PIPE FOUND
  - 5/8" I. ROD FOUND
  - ⊙ RAILROAD SPIKE SET
  - 3/4" I. ROD SET
  - 5/8" I. ROD SET
  - ⊙ PK SPIKE SET

REFERENCES:  
 LOGAN COUNTY ENGINEER'S RECORDS  
 R 3737  
 R 2907  
 R 4314  
 R 3414  
 FIELD BOOK 606, PP. 8-9  
 LOGAN COUNTY ROAD RECORDS  
 OHIO DEPARTMENT OF TRANSPORTATION RECORD:  
 S.H. 189 SEC. A, LOGAN COUNTY PG. 57/93  
 LEE SURVEYING AND MAPPING COMPANY RECORDS:  
 L - 295  
 L - 1939  
 FIELD BOOK 7, PAGE 7

CURVE	DELTA ANGLE	RADIUS	ARC	TANGENT	CHORD	CHORD BEARING
C 1	55°33'19"	34.41'	33.37'	18.13'	32.07'	N 66°09'22"E

THOMAS AND MARKER CONSTRUCTION COMPANY  
 11.0 ACRES  
 VOL. 331, PG. 332, TRACT 1

THOMAS AND MARKER CONSTRUCTION COMPANY  
 6.95 ACRES  
 VOL. 331, PG. 332, TRACT 11

FRED ALLEN  
 2.07 AC.  
 VOL. 323, PG. 87

SURVEY OF TWO TRACTS OUT OF THE  
 THOMAS AND MARKER CONSTRUCTION COMPANY  
 11.00 ACRE TRACT  
 DEED VOLUME 331, PAGE 332, TRACT 1  
 SECTION 32, TOWN 4, RANGE 14  
 LIBERTY TOWNSHIP  
 LOGAN COUNTY, OHIO

INDEXED ON MAP  
 822/7P



SURVEYED BY:  
 JEFFREY T. LEE  
 PROFESSIONAL SURVEYOR 6359  
 JULY 14, 1992

ORIGINAL STAMP IN GREEN

INDEXED ON MAP  
 822/

LEE SURVEYING & MAPPING CO.  
 143 East Columbus Avenue  
 BELLEFONTAINE, OHIO 43311  
 (513) 593-7335



Received 9-9-91



# Lee Surveying and Mapping Co.



Farm Surveys • Lot Surveys • Topography • Subdivisions • Construction Layout

143 EAST COLUMBUS AVENUE  
BELLEFONTAINE, OHIO 43311

(513) 593-7335

JEFFREY I. LEE, P.S.

## THOMAS AND MARKER CONSTRUCTION COMPANY (1.243 ACRES)

Lying in Section 32, Town 4, Range 14, Liberty Township, Logan County, Ohio.

Being out of the Thomas and Marker Construction Company 11.0 acre tract as deeded and described in Volume 331, Page 332 of the Logan County Records of Deeds and being more particularly described as follows:

Beginning at a railroad spike found at the intersection of center-lines of U.S. Route 68 and Township Road 200.

THENCE, with the center-line of said Route 68, S 4°-10'-00" E, a distance of 197.08 feet to a PK nail set.

THENCE, S 85°-50'-00" W, a distance of 30.00 feet to a 3/4 inch iron rod set on the west right-of-way of said Route 68.

THENCE, with a non-radial curve to the right, having a central angle of 55°-33'-19", a radius of 34.41 feet, an arc distance of 33.37 feet and having a chord bearing S 66°-09'-22" W, a distance of 32.08 feet to a 3/4 inch iron rod set on the north edge of an asphalt driveway.

THENCE, with the north edge of said driveway, N 86°-03'-58" W, a distance of 215.52 feet to a 3/4 inch iron rod set.

THENCE, N 6°-57'-54" E, a distance of 215.11 feet to a railroad spike set on the center-line of Township Road 200, passing a 3/4 inch iron rod set at 185.07 feet.

THENCE, with the center-line of Township Road 200, the north line of said Section 32, the south corporation line of the City of Bellefontaine, and the north line of Liberty Township, S 85°-56'-19" E, a distance of 234.45 feet to the point of beginning.

Containing 1.243 acres of which 0.280 acre is within the highway right-of-way.

The basis for bearings is based upon the center-line of U.S. Route 68 being S 4°-10'-00" E, and all other bearings are from angles and distances measured in a field survey by Lee Surveying and Mapping Company completed on September 5, 1991.

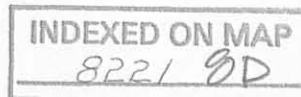
Description prepared by:



*Jeffrey I. Lee*  
Jeffrey I. Lee  
Professional Surveyor 6359  
September 9, 1991

L 1939

ORIGINAL STAMP IN GREEN





CITY OF BELLEFONTAINE

CORPORATION LINE LAKE TOWNSHIP LIBERTY TOWNSHIP

SEC. 33, T-4, R-14  
SEC. 32, T-4, R-14

TOWNSHIP ROAD 200

SOUTH MAIN STREET

68

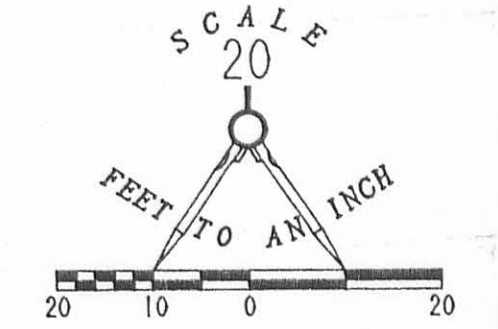
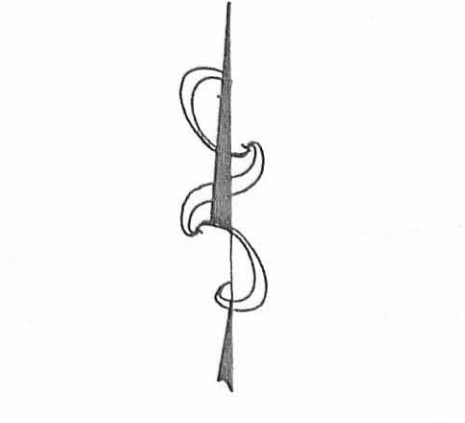
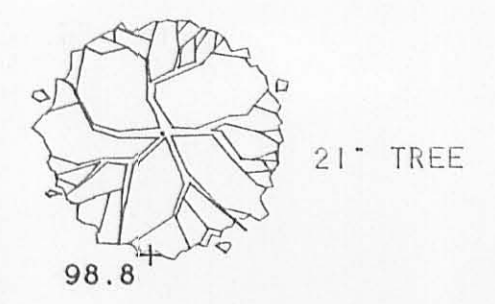
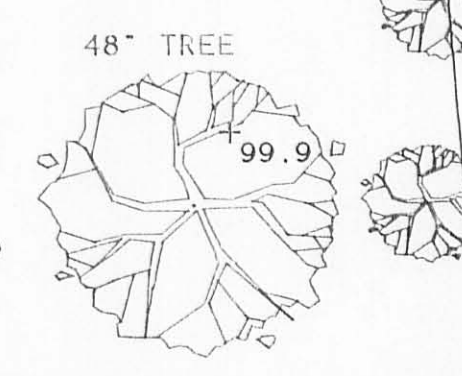
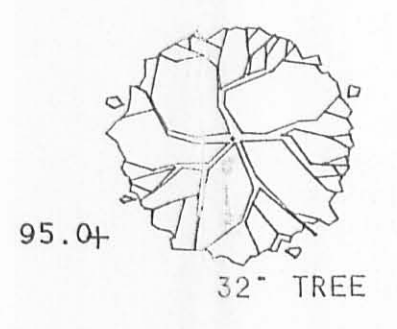
THOMAS AND MARKER CONSTRUCTION COMPANY  
11.0 ACRES  
VOL. 331, PG. 332

THOMAS AND MARKER  
CONSTRUCTION CO.

1 STORY BRICK BUILDING

CATCH BASIN  
TOP - 91.89

1.243 ACRES  
0.280 ACRE IS WITHIN THE  
HIGHWAY RIGHTS-OF-WAY



- LEGEND
- RAILROAD SPIKE FOUND
  - PK NAIL SET
  - RAILROAD SPIKE SET
  - 3/4" I. ROD SET

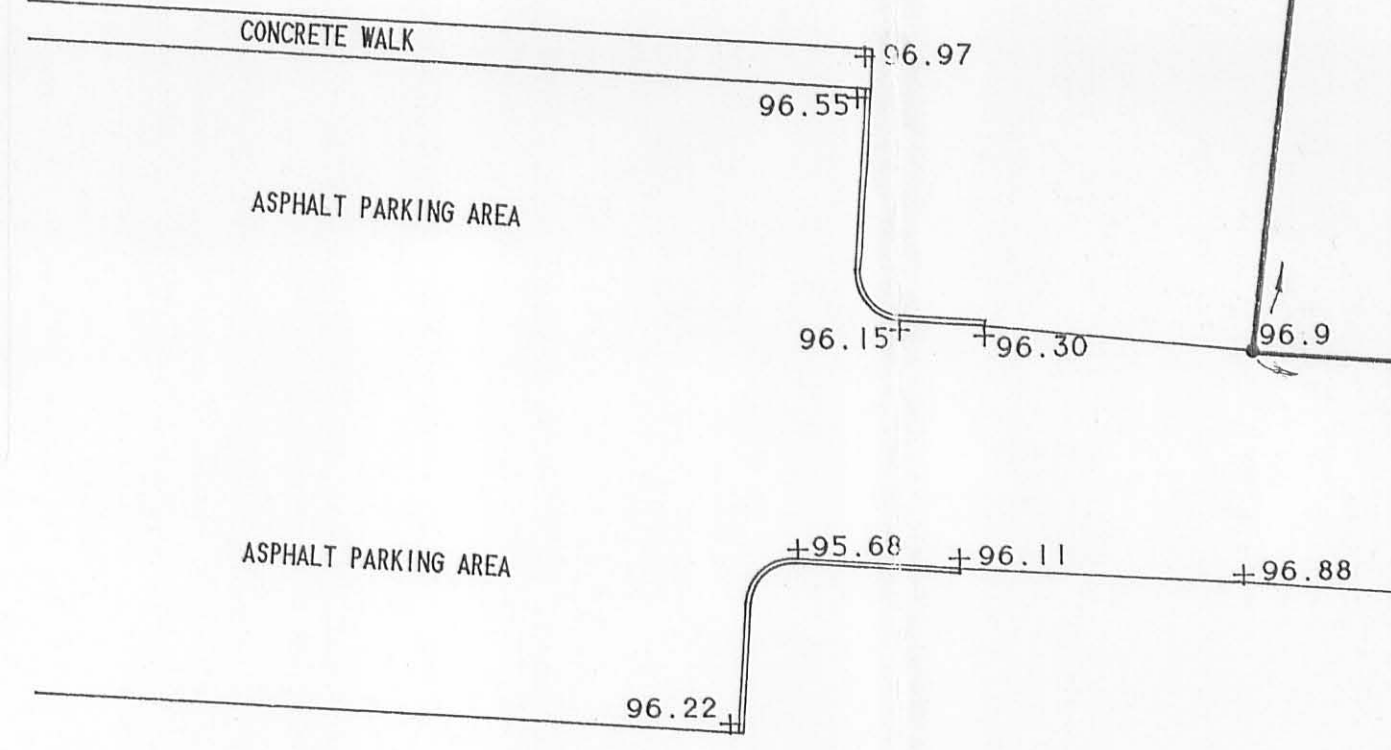
REFERENCES:

ELEVATIONS ARE ASSUMED, BASED UPON  
THOMAS AND MARKER DRAWING DATED 1-8-90  
SPOT ELEVATIONS ARE FROM THIS FIELD SURVEY.

LOGAN COUNTY ENGINEER'S RECORDS:  
R 3737  
R 2907  
R 4314  
R 3414  
FIELD BOOK 606, PP 8-9  
TOWNSHIP ROAD FILE FIELD NOTES DATED 29 MAY, 1987

OHIO DEPARTMENT OF TRANSPORTATION RECORD:  
S.H. 189 SEC. A, LOGAN COUNTY, PAGE 57/93 DATED 1931

LEE SURVEYING RECORDS:  
L - 295  
FIELD BOOK 7, PAGE 7



ASPHALT DRIVE

CURVE	DELTA ANGLE	RADIUS	ARC	TANGENT	CHORD	CHORD BEARING
C1	55°33'19"	34.41'	33.37'	18.13	32.08'	S 66°09'22" W

2 WORKING DAYS  
BEFORE YOU DIG  
CALL TOLL FREE 800-362-2764  
OHIO UTILITIES PROTECTION SERVICE.

SURVEY OF 1.243 ACRES OUT OF THE  
THOMAS AND MARKER CONSTRUCTION COMPANY  
11.0 ACRE TRACT (VOLUME 331, PAGE 332)  
SECTION 32, TOWN 4, RANGE 14  
LIBERTY TOWNSHIP, LOGAN COUNTY, OHIO

INDEXED ON MAP  
8221

INDEXED ON MAP  
8221



SURVEYED BY:  
*Jeffrey I. Lee*  
JEFFREY I. LEE  
PROFESSIONAL SURVEYOR 6359  
SEPTEMBER 1991  
LEE SURVEYING & MAPPING CO.  
143 East Columbus Avenue  
BELLEFONTAINE, OHIO 43111  
(513) 593-7335

ORIGINAL STAMP IN GREEN

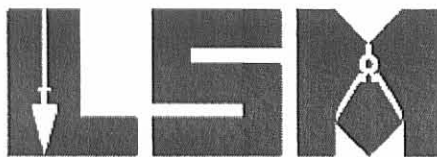


REC'D 11-16-09 Sam Au

# Lee Surveying and Mapping Co., Inc.

Land Surveys • Topography • Subdivisions • Construction Layout

117 N. Madriver St.  
Bellefontaine OH 43311



Phone: (937) 593-7335  
Fax: (937) 593-7444  
surveys@lsminc.us

## ROOT 0.732 ACRE

Lying in Section 32, Town 4, Range 14, City of Bellefontaine, Liberty Township, Logan County, Ohio.

Being all of the remainder of the Ralph H. Root and Kathryn J. Root original 0.997 acre tract as deeded and described in Official Record 690, Page 805 and all of the 0.009 acre tract as deeded and described in Official Record 743, Page 740 of the Logan County Records of Deeds and being more particularly described as follows:

Commencing on a railroad spike found on the north line of Section 32 at the intersection of the center-lines of South Main Street (U.S. Route 68, variable widths) and Allen Road (Township Road 200, 40 feet wide), also being the south line of Lake Township and the north line of Liberty Township.

THENCE, with the center-line of South Main Street, S 04°-10'-00"E, a distance of 192.21 feet to a MAG nail found.

THENCE, with the north line of the State of Ohio parcel 28 WDV 0.1442 acre tract (O.R. 946, Pg. 984), N 86°-03'-58"W, a distance of 42.89 feet to a 5/8 inch iron rod found with an aluminum O.D.O.T. cap at the TRUE POINT OF BEGINNING.

THENCE, with the north line of the BEF REIT, INC., original 0.959 acre tract (O.R. 279, Pg. 480), N 86°-03'-58"W, a distance of 221.28 feet to a MAG nail set, passing a 5/8 inch iron rod found at 204.72 feet.

THENCE, with the remainder of the Thomas and Marker Construction Co., original 11 acre tract (Vol. 331, Pg. 332), the following five courses:

With a curve to the right, having a central angle of 04°-42'-44", a radius of 87.72 feet, an arc length of 7.21 feet, a chord bearing N 25°-34'-49"E, a distance of 7.21 feet to a MAG nail set.

N 27°-56'-35"E, a distance of 19.50 feet to a MAG nail set.

With a curve to the left, having a central angle of 20°-49'-03", a radius of 112.50 feet, an arc length of 40.87 feet, a chord bearing N 17°-32'-01"E, a distance of 40.65 feet.

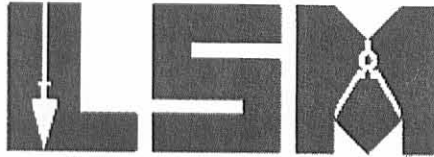
N 07°-07'-31"E, a distance of 101.50 feet to a point on a curb inlet, referenced by a 5/8 inch iron rod set bearing S 58°-42'-51"E, a distance of 5.03 feet.

INDEXED ON MAP  
8221 901

# Lee Surveying and Mapping Co., Inc.

Land Surveys • Topography • Subdivisions • Construction Layout

117 N. Madriver St.  
Bellefontaine OH 43311



Phone: (937) 593-7335  
Fax: (937) 593-7444  
surveys@lsminc.us

With a curve to the right, having a central angle of  $16^{\circ}-42'-12''$ , a radius of 20.00 feet, an arc length of 5.83 feet, a chord bearing  $N 15^{\circ}-28'-41''E$ , a distance of 5.81 feet to a MAG nail found.

THENCE, with the south line of the State of Ohio parcel 29 WD 0.0567 acre tract (O.R. 944, Pg. 611),  $S 85^{\circ}-53'-20''E$ , a distance of 137.62 feet to a 5/8 inch iron rod found with an aluminum O.D.O.T. cap.

THENCE, with the lines of the State of Ohio 29 WDV 0.2161 acre tract (O.R. 944, Pg. 615), the following four courses:

$S 04^{\circ}-28'-08''E$ , a distance of 6.61 feet to a 5/8 inch iron rod found with aluminum O.D.O.T. cap.

$S 59^{\circ}-05'-25''E$ , a distance of 23.84 feet to a 5/8 inch iron rod found with aluminum O.D.O.T. cap.

$S 32^{\circ}-17'-00''E$ , a distance of 26.66 feet to a 5/8 inch iron rod found with aluminum O.D.O.T. cap.

$S 04^{\circ}-09'-56''E$ , a distance of 133.10 feet to the point of beginning.

Containing 0.732 acre.

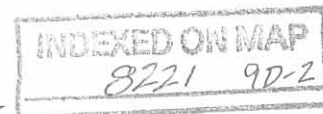
The basis for bearings is the center-line of U.S. Route 68, being  $S 04^{\circ}-10'-00''E$ , and all other bearings are from angles and distances measured in a field survey by Lee Surveying and Mapping Co., Inc. on August 7, 2009.



ORIGINAL STAMP IN GREEN

Description prepared by:

*William K. Bruce*



William K. Bruce  
Professional Surveyor 7437  
August 25, 2009

1939079



REV'D 11-16-09 SMJ/CK

KNOWN EASEMENTS FOUND IN SCHEDULE B SECTION II:

- 8 10' WIDE EASEMENTS GRANTED TO THE DAYTON POWER AND LIGHT COMPANY, RECORDED IN OFFICIAL RECORD 68, PAGE 918, LOGAN COUNTY RECORDS.
9 SANITARY SEWER EASEMENT GRANTED TO THE CITY OF BELLEFONTAINE, RECORDED IN OFFICIAL RECORD 199, PAGE 343, LOGAN COUNTY RECORDS.
10 EASEMENT AGREEMENT AND DECLARATION OF RESTRICTION RECORDED IN OFFICIAL RECORD 259, PAGE 831, LOGAN COUNTY RECORDS.
11 EASEMENT AGREEMENT RECORDED IN OFFICIAL RECORD 743, PAGE 742 LOGAN COUNTY RECORDS.
12 TEMPORARY EASEMENT RECORDED IN OFFICIAL RECORD 944, PAGE 619 LOGAN COUNTY RECORDS.

FLOOD ZONE NOTE: BY GRAPHIC PLOTTING ONLY, THE AREA SHOWN IS IN FLOOD ZONE "C" (AREAS OF MINIMAL FLOODING) AS SHOWN ON THE FLOOD INSURANCE RATE MAP (FIRM), COMMUNITY PANEL NUMBER 390772 0115 C, WITH AN EFFECTIVE DATE OF MAY 15, 1985.

ZONING: THIS PARCEL IS ZONED B-3 GENERAL BUSINESS DISTRICT.

HEIGHT REGULATIONS: NO PRINCIPAL STRUCTURE SHALL EXCEED FIVE STORIES OR SIXTY FEET IN HEIGHT.

Table with 5 columns: LOT, FRONT YARD, REAR YARD, SIDE YARD, DEPTH. Rows for NONE, 25, and 25 FEET.

PARKING: THIS SITE HAS 17 TYPICAL ASPHALT PARKING SPACES AND 1 HANDICAP ASPHALT PARKING SPACE.

NOTES: THERE IS NO OBSERVABLE EVIDENCE OF EARTH MOVING WORK, BUILDING CONSTRUCTION OR BUILDING ADDITIONS WITHIN RECENT MONTHS EXCEPT AS SHOWN. THERE IS NO OBSERVABLE EVIDENCE OF RECENT STREET OR SIDEWALK CONSTRUCTION OR REPAIRS, EXCEPT AS SHOWN, THERE IS NO EVIDENCE OF THE SITE BEING USED AS A SOLID WASTE DUMP, SUMP OR SANITARY LANDFILL.

THE USE OF THE WORD "CERTIFY" ON THIS DOCUMENT IS BASED UPON THE CURRENT DEFINITION IN SECTION 4733-35-04(c) OF THE OHIO ADMINISTRATIVE CODE. THE UNDERGROUND UTILITIES SHOWN HAVE BEEN LOCATED FROM A FIELD SURVEY OF ABOVE GROUND STRUCTURES AND EXISTING DRAWINGS PROVIDED TO THE SURVEYOR.

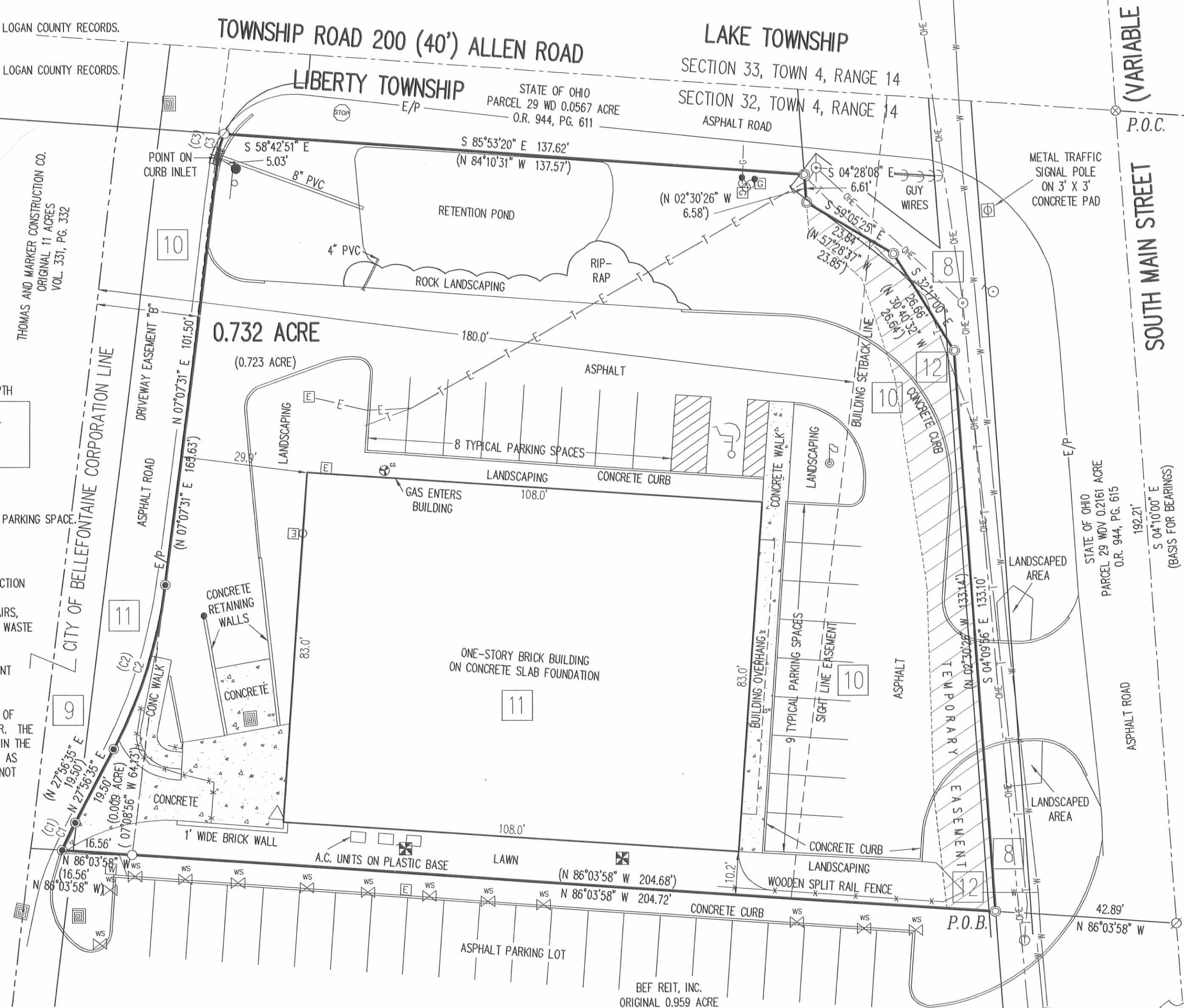
O.U.P.S. TICKET NUMBER: A921601600

DESCRIPTION:

LYING IN SECTION 32, TOWN 4, RANGE 14, CITY OF BELLEFONTAINE, LIBERTY TOWNSHIP, LOGAN COUNTY, OHIO. BEING ALL OF THE REMAINDER OF THE RALPH H. ROOT AND KATHRYN J. ROOT ORIGINAL 0.997 ACRE TRACT AS DEEDED AND DESCRIBED IN OFFICIAL RECORD 690, PAGE 805 AND ALL OF THE 0.009 ACRE TRACT AS DEEDED AND DESCRIBED IN OFFICIAL RECORD 743, PAGE 740 OF THE LOGAN COUNTY RECORDS OF DEEDS AND BEING MORE PARTICULARLY DESCRIBED AS FOLLOWS: COMMENCING ON A RAILROAD SPIKE FOUND ON THE NORTH LINE OF SECTION 32 AT THE INTERSECTION OF THE CENTER-LINES OF SOUTH MAIN STREET (U.S. ROUTE 68, VARIABLE WIDTHS) AND ALLEN ROAD (TOWNSHIP ROAD 200, 40 FEET WIDE), ALSO BEING THE SOUTH LINE OF LAKE TOWNSHIP AND THE NORTH LINE OF LIBERTY TOWNSHIP. THENCE, WITH THE CENTER-LINE OF SOUTH MAIN STREET, S 04°-10'-00" E, A DISTANCE OF 192.21 FEET TO A MAG NAIL FOUND. THENCE, WITH THE NORTH LINE OF THE STATE OF OHIO PARCEL 28 WDV 0.1442 ACRE TRACT (O.R. 946, PG. 984), N 86°-03'-58" W, A DISTANCE OF 42.89 FEET TO A 5/8 INCH IRON ROD FOUND WITH AN ALUMINUM O.D.O.T. CAP AT THE TRUE POINT OF BEGINNING. THENCE, WITH THE NORTH LINE OF THE BEF REIT, INC., ORIGINAL 0.959 ACRE TRACT (O.R. 279, PG. 480), N 86°-03'-58" W, A DISTANCE OF 221.28 FEET TO A MAG NAIL SET, PASSING A 5/8 INCH IRON ROD FOUND AT 204.72 FEET. THENCE, WITH THE REMAINDER OF THE THOMAS AND MARKER ORIGINAL 11 ACRE TRACT (VOL. 331, PG. 332), THE FOLLOWING FIVE COURSES: WITH A CURVE TO THE RIGHT, HAVING A CENTRAL ANGLE OF 04°-42'-44", A RADIUS OF 87.72 FEET, AN ARC LENGTH OF 7.21 FEET, A CHORD BEARING N 25°-34'-49" E, A DISTANCE OF 7.21 FEET TO A MAG NAIL SET. N 27°-56'-35" E, A DISTANCE OF 19.50 FEET TO A MAG NAIL SET. WITH A CURVE TO THE LEFT, HAVING A CENTRAL ANGLE OF 20°-49'-03", A RADIUS OF 112.50 FEET, AN ARC LENGTH OF 40.87 FEET, A CHORD BEARING N 17°-32'-01" E, A DISTANCE OF 40.65 FEET. N 07°-07'-31" E, A DISTANCE OF 101.50 FEET TO A POINT ON A CURB INLET, REFERENCED BY A 5/8 INCH IRON ROD SET BEARING S 58°-42'-51" E, A DISTANCE OF 5.03 FEET. WITH A CURVE TO THE RIGHT, HAVING A CENTRAL ANGLE OF 16°-42'-12", A RADIUS OF 20.00 FEET, AN ARC LENGTH OF 5.83 FEET, A CHORD BEARING N 15°-28'-41" E, A DISTANCE OF 5.81 FEET TO A MAG NAIL FOUND. THENCE, WITH THE SOUTH LINE OF THE STATE OF OHIO PARCEL 29 WDV 0.0567 ACRE TRACT (O.R. 944, PG. 611), S 85°-53'-20" E 137.62 FEET TO A 5/8 INCH IRON ROD FOUND WITH AN ALUMINUM O.D.O.T. CAP. THENCE, WITH THE LINES OF THE STATE OF OHIO PARCEL 29 WDV 0.2161 ACRE TRACT (O.R. 944, PG. 615), THE FOLLOWING FOUR COURSES: S 04°-28'-08" E, A DISTANCE OF 6.61 FEET TO A 5/8 INCH IRON ROD FOUND WITH AN ALUMINUM O.D.O.T. CAP. S 59°-05'-25" E, A DISTANCE OF 23.84 FEET TO A 5/8 INCH IRON ROD FOUND WITH AN ALUMINUM O.D.O.T. CAP. S 32°-17'-00" E, A DISTANCE OF 26.66 FEET TO A 5/8 INCH IRON ROD FOUND WITH AN ALUMINUM O.D.O.T. CAP. S 04°-09'-56" E, A DISTANCE OF 133.10 FEET TO THE POINT OF BEGINNING. CONTAINING 0.732 ACRE.

Table with 6 columns: CURVE, DELTA ANGLE, RADIUS, ARC LENGTH, CHORD BEARING, CHORD LENGTH. Rows C1, C2, C3, C2, C3, C3.

2 WORKING DAYS BEFORE YOU DIG CALL TOLL FREE 800-362-2764



LEGEND:

- RAILROAD SPIKE FOUND, MAG NAIL FOUND, 5/8 INCH IRON ROD FOUND, 5/8 INCH IRON ROD FOUND WITH ALUMINUM O.D.O.T. CAP, 5/8 INCH IRON ROD SET WITH PLASTIC I.D. CAP STAMPED 'LSM 7437', UTILITY POLE, LIGHT POLE, ELECTRIC BOX, SIGN, CATCH BASIN, TELEPHONE PAD, WATER METER, CLEAN-OUT, BOLLARD, WOOD POST, ELECTRIC METER, GAS METER, WATER SPRINKLER, WATER SPRINKLER CONTROL BOX, FIRE HYDRANT, CURB INLET, ANTENNA, YARD DRAIN, FLAG POLE, STOP SIGN, OVERHEAD ELECTRIC, UNDERGROUND ELECTRIC, UNDERGROUND WATER, UNDERGROUND GAS, UNDERGROUND TELEPHONE, RECORD BEARING AND DISTANCE.

DESCRIPTION PER TITLE COMMITMENT:

PARCEL 1/0.997 ACRE: LYING IN SECTION 32, TOWN 4, RANGE 14, CITY OF BELLEFONTAINE, LIBERTY TOWNSHIP, LOGAN COUNTY, OHIO. BEING OUT OF THE THOMAS AND MARKER CONSTRUCTION COMPANY 11.0 ACRE TRACT AS DEEDED AND DESCRIBED IN VOLUME 331, PAGE 332 OF THE LOGAN COUNTY RECORDS OF DEEDS AND BEING MORE PARTICULARLY DESCRIBED AS FOLLOWS: BEGINNING AT A RAILROAD SPIKE FOUND AT THE INTERSECTION OF THE CENTERLINES OF US ROUTE 68 (SOUTH MAIN STREET, 80 FEET WIDE) AND TOWNSHIP ROAD 200 (ALLEN ROAD, 40 FEET WIDE). THENCE, WITH THE CENTERLINE OF THE SAID US ROUTE 68, SOUTH 04 DEG. 10' 00" EAST, A DISTANCE OF 192.21 FEET TO A MAG NAIL SET AT THE NORTHEAST CORNER OF THE BOB EVANS FARMS, INC. 0.959 ACRE TRACT (O.R. 176, PAGE 37). THENCE, WITH THE NORTH LINE OF THE SAID 0.959 ACRE TRACT, NORTH 86 DEG. 03' 58" WEST, A DISTANCE OF 247.61 FEET TO A 5/8 INCH IRON ROD SET, PASSING A 5/8 INCH IRON ROD SET AT 40.43 FEET. THENCE, NORTH 07 DEG 07' 31" EAST, A DISTANCE OF 165.63 FEET TO A POINT. THENCE, WITH A CURVE TO THE RIGHT HAVING A CENTRAL ANGLE OF 16 DEG. 42' 12", A RADIUS OF 20.00 FEET, AN ARC LENGTH OF 5.83 FEET WITH A CHORD BEARING NORTH 15 DEG. 28' 41" EAST AND A CHORD DISTANCE OF 5.81 FEET TO A MAG NAIL SET ON THE SOUTH RIGHT-OF-WAY OF TOWNSHIP ROAD 200. THENCE, CONTINUING WITH THE SAID CURVE TO THE RIGHT HAVING A CENTRAL ANGLE OF 70 DEG. 14' 12", A RADIUS OF 20.00 FEET, AN ARC LENGTH OF 24.32 FEET, A CHORD BEARING NORTH 58 DEG. 56' 38" EAST AND A CHORD DISTANCE OF 23.01 FEET TO A MAG NAIL SET. THENCE, NORTH 04 DEG. 03' 05" EAST, A DISTANCE OF 6.74 FEET TO A MAG NAIL SET ON THE CENTERLINE OF THE SAID TOWNSHIP ROAD 200. THENCE, WITH THE SAID CENTERLINE OF TOWNSHIP ROAD 200, SOUTH 85 DEG. 51' 18" EAST, A DISTANCE OF 191.25 FEET TO THE POINT OF BEGINNING. CONTAINING 0.997 ACRE, MORE OR LESS, OF WHICH 0.251 ACRE IS WITHIN THE HIGHWAY RIGHT-OF-WAY. THE BASIS FOR BEARINGS IS THE CENTERLINE OF US ROUTE 68 BEING SOUTH 04 DEG. 10' 00" EAST, AND ALL OTHER BEARINGS ARE FROM ANGLES AND DISTANCES MEASURED IN A FIELD SURVEY BY LEE SURVEYING AND MAPPING CO., INC. ON OCTOBER 13, 2003. DESCRIPTION PREPARED BY WILLIAM K. BRUCE, PROFESSIONAL SURVEYOR 7437 ON OCTOBER 16, 2003. PARCEL NO. 58-106-00-00-076-005 LESS AND EXCEPTING PARCEL 29-WV / LOG-68-5.92: SITUATED IN THE STATE OF OHIO, COUNTY OF LOGAN, TOWNSHIP OF LIBERTY, CITY OF BELLEFONTAINE, AND BEING IN SECTION 32, TOWNSHIP 4, RANGE 14, BETWEEN THE MIAMIS AND BEING PART OF A 0.997 ACRE TRACT AS CONVEYED TO RALPH H. ROOT AND KATHRYN J. ROOT, OFFICIAL RECORD 690, PAGE 805 AND BEING MORE PARTICULARLY DESCRIBED AS FOLLOWS: BEING A PARCEL OF LAND LYING ON THE LEFT SIDE OF THE CENTERLINE OF RIGHT-OF-WAY OF LOG-68-5.92 MADE BY E.P. FERRIS & ASSOCIATES, INC. AS RECORDED IN HIGHWAY BOOK 1, PAGE 121 OF THE RECORDS OF LOGAN COUNTY, AND BEING LOCATED WITHIN THE FOLLOWING DESCRIBED POINTS IN THE BOUNDARY THEREOF: COMMENCING AT A FOUND RESURVEY MONUMENT INSIDE A MONUMENT BOX AT THE QUARTER SECTION CORNER OF SECTION 32 AND 33, IN THE CENTERLINE OF ALLEN ROAD (TOWNSHIP ROAD 200) AND BEING ON THE TOWNSHIP LINE OF LIBERTY AND LAKE, CENTERLINE STATION 5456.57; THENCE ALONG THE CENTERLINE OF TOWNSHIP ROAD 200, SOUTH 84 DEG. 10' 31" EAST, 1252.13 FEET TO A POINT BEING A NORTHWEST CORNER OF SAID 0.997 ACRE TRACT AND THE SOUTHEAST CORNER OF AN 11.0 ACRE TRACT AS CONVEYED TO THOMAS AND MARKER CONSTRUCTION CO., DEED BOOK 331, PAGE 332, SAID POINT BEING CENTERLINE STATION 18408.70 OF SAID TOWNSHIP ROAD 200, SAID POINT BEING 189.27 FEET LEFT OF CENTERLINE STATION 327+36.05 OF US 68 AND BEING THE TRUE POINT OF BEGINNING OF THE PARCEL HEREIN DESCRIBED; THENCE WITH THE CENTERLINE OF SAID ALLEN ROAD AND THE NORTH LINE OF SAID 0.997 ACRE TRACT, SOUTH 84 DEG. 10' 31" EAST, 115.89 FEET TO A POINT BEING CENTER-LINE STATION 19+24.59 OF SAID TOWNSHIP ROAD 200 AND IN THE NORTH LINE OF SAID 0.997 ACRE TRACT, SAID POINT BEING 74.61 FEET LEFT OF CENTERLINE STATION 327+19.25 OF US 68; THENCE SOUTH 02 DEG. 30' 26" EAST, 20.21 FEET TO AN IRON PIN SET IN THE SOUTHERLY RIGHT-OF-WAY LINE OF ALLEN ROAD, SAID POINT BEING 74.61 FEET LEFT OF CENTER-LINE STATION 326+99.04; THENCE, WITH THE SOUTHERLY RIGHT-OF-WAY LINE OF ALLEN ROAD, NORTH 84 DEG. 10' 31" WEST, 137.57 FEET TO AN IRON PIN SET IN A WEST LINE OF SAID 0.997 ACRE TRACT AND THE EAST LINE OF SAID 11.0 ACRE TRACT, SAID POINT BEING 210.73 FEET LEFT OF CENTERLINE STATION 327+18.97; THENCE, WITH THE LINE BETWEEN SAID 0.997 ACRE TRACT AND SAID 11.0 ACRE TRACT AND ALONG A CURVE TO THE RIGHT WITH A RADIUS OF 20.00 FEET, A CENTRAL ANGLE OF 69 DEG. 58'43", AN ARC LENGTH OF 24.43 FEET, AND A CHORD WHICH BEARS NORTH 60 DEG. 44' 03" EAST, A DISTANCE OF 22.94 FEET TO A POINT, SAID POINT BEING 190.25 FEET LEFT OF CENTERLINE STATION 327+29.30; THENCE, NORTH 05 DEG. 42' 39" EAST, 6.81 FEET TO THE POINT OF BEGINNING. THE ABOVE DESCRIBED AREA IS CONTAINED WITHIN THE LOGAN COUNTY AUDITOR'S PERMANENT PARCEL NUMBER 58-106-00-00-076-005 AND CONTAINS 0.0567 ACRE, MORE OR LESS, WHICH INCLUDES 0.0567 ACRE IN THE PRESENT ROAD OCCUPIED. BEARINGS ARE BASED ON ENGLISH GROUND COORDINATES CONVERTED FROM THE OHIO STATE PLANE COORDINATE SYSTEM, NORTH ZONE, NAD 83 (86 ADJ.). CONTROL FOR BEARINGS ARE FROM GS AND G8, PROVIDED BY ODOT (LOG-68-8.45, PID 19663, STATE JOB NO. 471210), HAVING A BEARING OF NORTH 12 DEG. 32' 14" EAST. THIS DESCRIPTION WAS PREPARED AND REVIEWED ON JULY 1, 2008 BY EDWARD P. FERRIS, REGISTERED SURVEYOR NO. 6027 AND IS BASED UPON A FIELD SURVEY PERFORMED BY E.P. FERRIS & ASSOCIATES, INC. MONUMENTS REFERRED TO AS IRON PINS SET ARE 3/4" DIAMETER X 30" LONG IRON REBAR WITH A 2 INCH DIAMETER ALUMINUM CAP MARKED "O.D.O.T. R/W EP FERRIS 6027". LESS AND EXCEPTING PARCEL 29-WDV / LOG-68-5.92: SITUATED IN THE STATE OF OHIO, COUNTY OF LOGAN, TOWNSHIP OF LIBERTY, CITY OF BELLEFONTAINE, AND BEING IN SECTION 32, TOWNSHIP 4, RANGE 14, BETWEEN THE MIAMIS AND BEING PART OF A 0.997 ACRE TRACT AS CONVEYED TO RALPH H. ROOT AND KATHRYN J. ROOT, OFFICIAL RECORD 690, PAGE 805 AND BEING MORE PARTICULARLY DESCRIBED AS FOLLOWS: BEING A PARCEL OF LAND LYING ON THE LEFT SIDE OF THE CENTERLINE OF RIGHT-OF-WAY OF LOG-68-5.92 MADE BY E.P. FERRIS & ASSOCIATES, INC. AS RECORDED IN HIGHWAY BOOK 1, PAGE 121 OF THE RECORDS OF LOGAN COUNTY, AND BEING LOCATED WITHIN THE FOLLOWING DESCRIBED POINTS IN THE BOUNDARY THEREOF: COMMENCING AT A FOUND RESURVEY MONUMENT INSIDE A MONUMENT BOX AT THE QUARTER SECTION CORNER OF SECTION 32 AND 33, IN THE CENTERLINE OF ALLEN ROAD (TOWNSHIP ROAD 200) AND BEING ON THE TOWNSHIP LINE OF LIBERTY AND LAKE, CENTERLINE STATION 5456.57;

THENCE ALONG THE SAID CENTERLINE, SOUTH 84 DEG. 10' 31" EAST, 1368.02 FEET TO CENTERLINE STATION 19+24.59 OF SAID TOWNSHIP ROAD 200, SAID POINT BEING 74.61 FEET LEFT OF CENTERLINE STATION 327+19.25 OF US 68 AND BEING THE TRUE POINT OF BEGINNING OF THE PARCEL HEREIN DESCRIBED; THENCE ALONG THE CENTERLINE OF TOWNSHIP ROAD 200 AND A NORTH LINE OF SAID 0.997 ACRE TRACT, SOUTH 84 DEG. 10' 31" EAST, 75.40 FEET TO A RAILROAD SPIKE FOUND AT THE NORTHEAST CORNER OF SAID 0.997 ACRE TRACT, SAID RAILROAD SPIKE BEING THE CENTERLINE INTERSECTION OF SAID TOWNSHIP ROAD 200 (CENTERLINE STATION 20+00.00) AND US 68 (CENTER-LINE STATION 327+08.33); THENCE WITH THE CENTERLINE OF US 68 AND THE EAST LINE OF SAID 0.997 ACRE TRACT, SOUTH 02 DEG. 30' 26" EAST, 192.24 FEET TO A POINT BEING THE SOUTHEAST CORNER OF SAID 0.997 ACRE TRACT AND THE NORTHEAST CORNER OF A 0.959 ACRE TRACT AS CONVEYED TO BEF REIT, INC., OFFICIAL RECORD 279, PAGE 480, SAID POINT BEING CENTERLINE STATION 325+16.09; THENCE WITH THE LINE BETWEEN SAID 0.997 ACRE TRACT AND SAID 0.959 ACRE TRACT, NORTH 84 DEG. 24' 09" WEST, PASSING A 5/8" IRON PIN FOUND, CAPPED LEE 6359, AT 40.43 FEET, A TOTAL DISTANCE OF 42.93 FEET TO AN IRON PIN SET, SAID POINT BEING 42.50 FEET LEFT OF CENTERLINE STATION 325+22.14; THENCE NORTH 02 DEG. 30' 26" WEST, 133.14 FEET TO AN IRON PIN SET, SAID POINT BEING 42.50 FEET LEFT OF CENTERLINE STATION 326+55.28; THENCE NORTH 30 DEG. 40' 32" WEST, 26.64 FEET TO AN IRON PIN SET, SAID POINT BEING 55.08 FEET LEFT OF CENTERLINE STATION 326+78.77; THENCE NORTH 57 DEG. 28' 37" WEST, 23.85 FEET TO AN IRON PIN SET IN THE SOUTHERLY RIGHT-OF-WAY LINE OF TOWNSHIP ROAD 200, SAID POINT BEING 74.61 FEET LEFT OF CENTERLINE STATION 326+92.46 OF US 68; THENCE NORTH 02 DEG. 30' 26" WEST, 26.79 FEET TO THE POINT OF BEGINNING. THE ABOVE DESCRIBED AREA IS CONTAINED WITHIN THE LOGAN COUNTY AUDITOR'S PERMANENT PARCEL NUMBER 58-106-00-00-076-005 AND CONTAINS 0.2161 ACRE, MORE OR LESS, WHICH INCLUDES 0.1532 ACRE IN THE PRESENT ROAD OCCUPIED. BEARINGS ARE BASED ON ENGLISH GROUND COORDINATES CONVERTED FROM THE OHIO STATE PLANE COORDINATE SYSTEM, NORTH ZONE, NAD 83 (86 ADJ.). CONTROL FOR BEARINGS ARE FROM GS AND G8, PROVIDED BY ODOT (LOG-68-8.45, PID 19663, STATE JOB NO. 471210), HAVING A BEARING OF NORTH 12 DEG. 32' 14" EAST. THIS DESCRIPTION WAS PREPARED AND REVIEWED ON JULY 1, 2008 BY EDWARD P. FERRIS, REGISTERED SURVEYOR NO. 6027 AND IS BASED UPON A FIELD SURVEY PERFORMED BY E.P. FERRIS & ASSOCIATES, INC. MONUMENTS REFERRED TO AS IRON PINS SET ARE 3/4" DIAMETER X 30" LONG REBAR WITH A 2 INCH DIAMETER ALUMINUM CAP MARKED "O.D.O.T. R/W EP FERRIS 6027". PARCEL 2 / 0.009 ACRE: LYING IN SECTION 32, TOWN 4, RANGE 14, CITY OF BELLEFONTAINE, LIBERTY TOWNSHIP, LOGAN COUNTY, OHIO. BEING OUT OF THE THOMAS AND MARKER CONSTRUCTION COMPANY 11.0 ACRE TRACT AS DEEDED AND DESCRIBED IN VOLUME 331, PAGE 332 OF THE LOGAN COUNTY RECORDS OF DEEDS AND BEING MORE PARTICULARLY DESCRIBED AS FOLLOWS: BEGINNING AT THE RAILROAD SPIKE FOUND AT THE INTERSECTION OF THE CENTERLINES OF US ROUTE 68 (SOUTH MAIN STREET)(80 FEET WIDE) AND TOWNSHIP ROAD 200 (60 FEET WIDE)(ALLEN ROAD) ON THE NORTH LINE OF LIBERTY TOWNSHIP, ALSO BEING THE NORTH LINE OF SECTION 32. THENCE, WITH THE CENTERLINE OF US 68, SOUTH 4 DEG. 10' 00" EAST, A DISTANCE OF 192.21 FEET TO A MAG NAIL FOUND. THENCE, WITH THE NORTH LINE OF THE BEF REIT, INC. 0.959 ACRE TRACT (O.R. 279, PAGE 480), NORTH 86 DEG. 03' 58" WEST, A DISTANCE OF 247.60 FEET TO A 5/8 INCH IRON ROD SET AT THE TRUE POINT OF BEGINNING. THENCE, WITH THE NORTH LINE OF THE SAID 0.959 ACRE TRACT, NORTH 86 DEG. 03' 58" WEST, A DISTANCE OF 165.56 FEET TO A 5/8 INCH IRON ROD SET. THENCE, WITH A CURVE TO THE RIGHT HAVING A CENTRAL ANGLE OF 4 DEG. 42' 44", A RADIUS OF 87.72 FEET, AN ARC LENGTH OF 7.21 FEET, HAVING A CHORD BEARING NORTH 25 DEG. 34' 49" EAST AT A DISTANCE OF 7.21 FEET TO A 5/8 INCH IRON ROD SET. THENCE, NORTH 27 DEG. 56' 35" EAST, A DISTANCE OF 19.50 FEET TO A 5/8 INCH IRON ROD SET. THENCE, WITH A CURVE TO THE LEFT HAVING A CENTRAL ANGLE OF 20 DEG. 49' 03", A RADIUS OF 112.50 FEET, AN ARC LENGTH OF 40.87 FEET, CHORD BEARING N 17 DEG. 32' 01" EAST A DISTANCE OF 40.65 FEET TO A 5/8 INCH IRON ROD SET. THENCE, WITH THE WEST LINE OF THE RALPH H. ROOT AND KATHRYN J. ROOT 0.997 ACRE TRACT (O.R. 690, PAGE 805) SOUTH 7 DEG. 08'56" WEST, A DISTANCE OF 64.13 FEET TO THE POINT OF BEGINNING. CONTAINING 0.009 ACRE, MORE OR LESS. THE BASIS FOR BEARINGS IS THE CENTERLINE OF US ROUTE 68 BEING SOUTH 04 DEG. 10'00"EAST, AND ALL OTHER BEARINGS ARE FROM ANGLES AND DISTANCES MEASURED IN A FIELD SURVEY BY LEE SURVEYING AND MAPPING CO., INC. ON OCTOBER 13, 2003. DESCRIPTION PREPARED BY JEFFREY I. LEE, PROFESSIONAL SURVEYOR 6359 ON APRIL 6, 2004. PARCEL NO. 58-106-00-00-076-006

ALTA/ASCM LAND TITLE SURVEY OF THE RALPH H. ROOT AND KATHRYN J. ROOT ORIGINAL 0.997 ACRE TRACT AND 0.009 ACRE TRACT OFFICIAL RECORD 690, PAGE 805 OFFICIAL RECORD 743, PAGE 740 SECTION 32, TOWN 4, RANGE 14 CITY OF BELLEFONTAINE LIBERTY TOWNSHIP LOGAN COUNTY, OHIO

SURVEYOR'S CERTIFICATION:

THE UNDERSIGNED HEREBY CERTIFIES TO AARON'S INC. AND LAWYERS TITLE INSURANCE CORPORATION AND TO THEIR SUCCESSORS AND ASSIGNS, THAT HE IS A DULY REGISTERED LAND SURVEYOR IN THE STATE OF OHIO; THAT THIS MAP OR PLAT AND THE SURVEY ON WHICH IT IS BASED WAS MADE IN ACCORDANCE WITH "MINIMUM STANDARD DETAIL REQUIREMENTS FOR ALTA/ASCM LAND TITLE SURVEYS," JOINTLY ESTABLISHED BY ALTA AND NSPS IN 2005, AND INCLUDES ITEMS 1, 2, 3, 4, 6, 7(a), 8, 9, 10, 11(a), 11(b) AND 13 OF TABLE A THEREOF. PURSUANT TO THE ACCURACY STANDARDS AS ADOPTED BY ALTA AND NSPS AND IN EFFECT ON THE DATE OF THIS CERTIFICATION, THE UNDERSIGNED FURTHER CERTIFIES THAT IN MY PROFESSIONAL OPINION, AS A LAND SURVEYOR REGISTERED IN THE STATE OF OHIO, THE RELATIVE POSITIONAL ACCURACY OF THIS SURVEY DOES NOT EXCEED THAT WHICH IS SPECIFIED THEREIN.

I MADE AN ON THE GROUND SURVEY PER RECORD DESCRIPTION OF THE LAND SHOWN HEREON LOCATED IN SECTION 32, TOWN 4, RANGE 14, CITY OF BELLEFONTAINE, LIBERTY TOWNSHIP, LOGAN COUNTY, OHIO ON AUGUST 7, 2009; AND THAT IT AND THIS MAP WERE MADE IN ACCORDANCE WITH THE REQUIREMENTS FOR A LAND TITLE SURVEY, AS DEFINED IN THE MINIMUM STANDARD DETAIL REQUIREMENTS FOR ALTA/ASCM LAND TITLE SURVEYS DATED 2005.

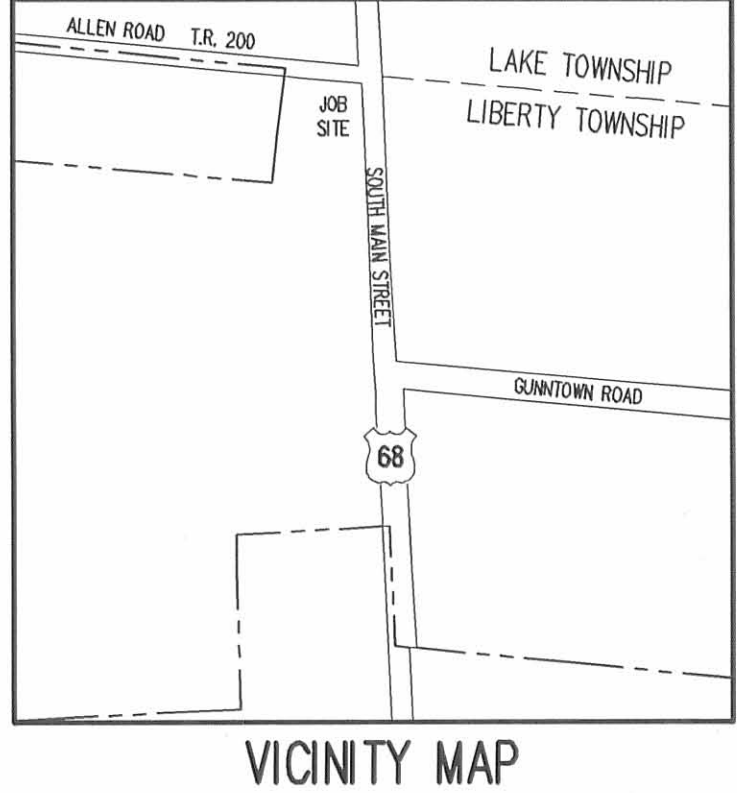
TO THE BEST OF MY KNOWLEDGE, BELIEF AND INFORMATION, EXCEPT AS SHOWN HEREON, THERE ARE NO ENCROACHMENTS EITHER WAY ACROSS PROPERTY LINES; TITLE LINES AND LINES OF ACTUAL POSSESSION ARE THE SAME; AND THE PREMISES ARE FREE OF ANY 100/500 YEAR RETURN FREQUENCY FLOOD HAZARD, SUCH FLOOD FEE CONDITION IS SHOWN ON THE FEDERAL FLOOD INSURANCE RATE MAP (FIRM), COMMUNITY PANEL NUMBER 390772 0115C, EFFECTIVE DATE MAY 15, 1985. THE PREMISES IS IN AREA "C" (AREA OF MINIMAL FLOODING).

I ALSO CERTIFY THAT THE PROPERTY SHOWN ON THIS MAP OR PLAT ABUS A PUBLICLY DEDICATED STREET (ALLEN ROAD/TOWNSHIP ROAD 200 AND SOUTH MAIN STREET/U.S. ROUTE 68) AND THERE IS VEHICULAR INGRESS AND EGRESS TO AND FROM THE PROPERTY; THAT EXCEPT AS SHOWN, THE PREMISES DOES NOT SERVE ANY OTHER ADJOINING PROPERTY FOR DRAINAGE, INGRESS, EGRESS OR ANY OTHER PURPOSE; THAT IF THE PROPERTY CONSISTS OF TWO OR MORE PARCELS, THAT THE PARCELS ARE CONTIGUOUS AND WHEN TAKEN TOGETHER FORM ONE PARCEL WITHOUT ANY GAPS OR GORES; AND THAT THE EXISTING UTILITIES (I.E. STORM, SANITARY, SEWERS, WATER, GAS AND ELECTRIC) ARE AVAILABLE TO THE PROPERTY.

ALL REFERENCED DOCUMENTS ARE FROM LAWYERS TITLE INSURANCE CORPORATION COMMITMENT NO. 09-38389, HAVING AN EFFECTIVE DATE OF JULY 17, 2009 AT 7:00 A.M. THE SURVEYOR DID NOT MAKE A SEARCH FOR ANY ADDITIONAL DOCUMENTS OR EASEMENTS.

SURVEYED BY: William K. Bruce, Professional Surveyor 7437, August 7, 2009, Revised October 26, 2009.

LEE SURVEYING & MAPPING CO., INC. 117 North Madison Street, Bellefontaine, OHIO 43311 (937) 593-7335 surveys@lsm-inc.us KSS D0809 1939079REV L-1939-1



INDEXED ON MAP 8221 9P