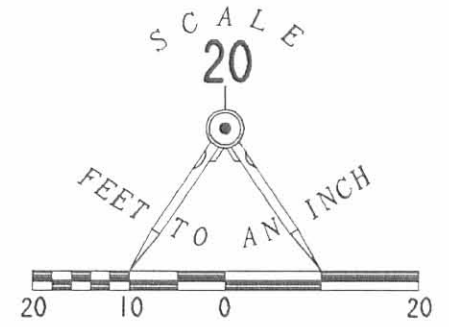


REC'D 3-14-95 SKM 100

DOWELL AVENUE (40')

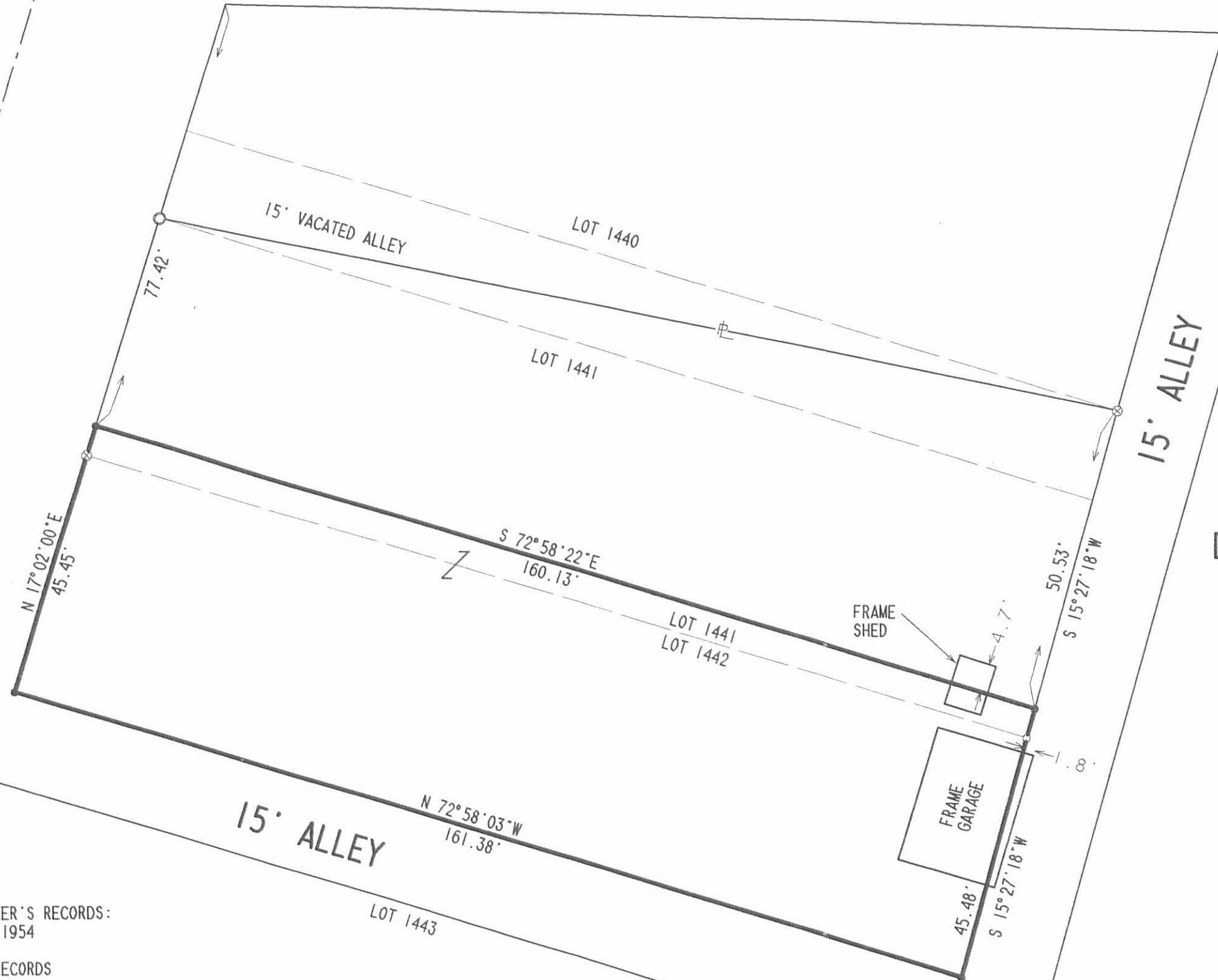
NORTH MAIN STREET (60')



LEGEND

- 1" PIPE FOUND
- ⊗ 3/4" PIPE FOUND
- 5/8" I. ROD FOUND
- 5/8" I. ROD SET

RETRACEMENT SURVEY OF THE
 GEORGIA WRIGHT LOT 1442 AND
 PART OF LOT 1441
 DEED VOLUME 356, PAGE 735 EXCEPTING
 OFFICIAL RECORD 126, PAGE 620
 CITY OF BELLEFONTAINE
 VIRGINIA MILITARY SURVEY 5245
 LAKE TOWNSHIP
 LOGAN COUNTY, OHIO



REFERENCES:
LOGAN COUNTY ENGINEER'S RECORDS:
"R" FILES 6666 AND 1954

O.D.O.T. ROUTE 68 RECORDS

LEE SURVEYING FILE 1882

2 WORKING DAYS
BEFORE YOU DIG
 CALL TOLL FREE **800-362-2764**
 OHIO UTILITIES PROTECTION SERVICE.

INDEXED ON MAP
 8093 1P

SURVEYED BY:

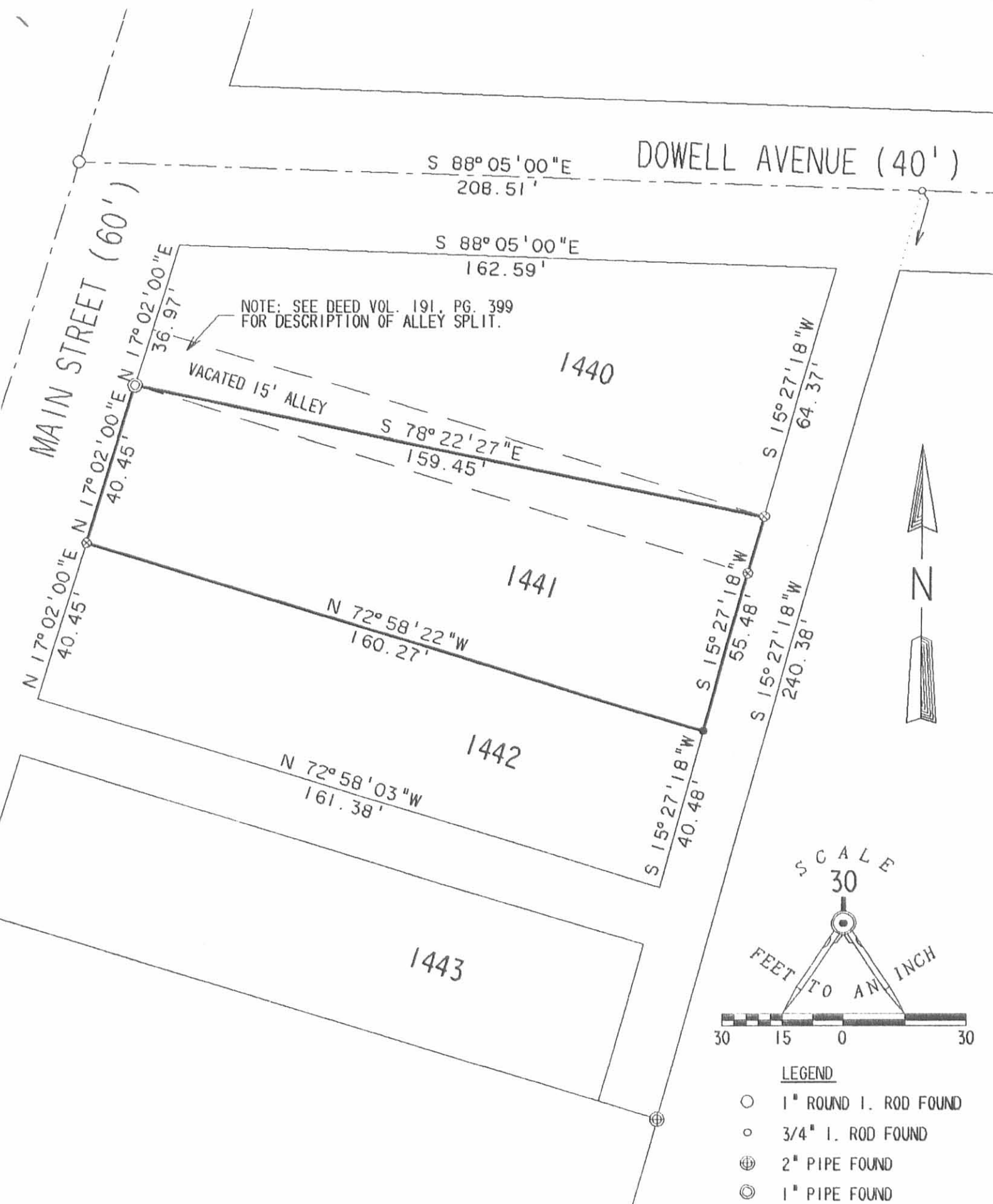
(Signature)
 JEFFREY I. LEE
 PROFESSIONAL SURVEYOR 6359
 MARCH 8, 1995



ORIGINAL STAMP IN GREEN

COPYRIGHT 1995 BY:
LEE SURVEYING & MAPPING CO.
 143 East Columbus Avenue
 BELLEFONTAINE, OHIO 43311
 (513) 593-7335

D 254 GWRIGHT2 L 1882-3



SURVEY OF CITY LOT 1441 AND
 PART OF VACATED ALLEY FOR
 GEORGIA WRIGHT
 DEED VOLUME 356, PAGE 735
 CITY OF BELLEFONTAINE
 V.M.S. 5245, LAKE TOWNSHIP
 LOGAN COUNTY, OHIO

INDEXED ON MAP
 80932P



SURVEYED BY:

 JEFFREY I. LEE
 PROFESSIONAL SURVEYOR 6359
 DECEMBER 11, 1990

LEE SURVEYING & MAPPING CO.
 143 East Columbus Avenue
 BELLEFONTAINE, OHIO 43311
 (513) 593-7336

ORIGINAL STAMP IN GREEN