

**LESLIE H. GEESLIN**

REGISTERED SURVEYOR 5248

P. O. BOX 274

RUSHSVLVANIA, OHIO 43347

TELEPHONE: (937) 468-2793

SPRINT UNITED TELEPHONE EASEMENT

July 11, 1997

The following described easement situated in the State of Ohio, County of Logan, Township of Lake, City of Bellefontaine, being part of Section 35, Town 4, Range 14, B. M. R. S. and Virginia Military Surveys 4990 and 5245 and more particularly described as follows:

Beginning at a point in the east line of Palmer Addition as shown in Plat Cabinet "A" Slide 19 that is N. 0° 29' 20" E. 277.61 feet from a 5/8 inch iron bar found at the southeast corner of said Addition

Thence with the east line of said Addition the following two courses

- 1. N. 0° 29' 20" E. 16.77 feet to a point.
- 2. N. 18° 35' 12" W. 346.66 feet to a point in the south line of Michael A. Hassel's

0.1539 acre tract as described in D. B. Vol. 346 Page 889.

Thence with said Hassel's south line N. 78° 40' 38" E. 12.83 feet to a 5/8 inch iron bar found, said 5/8 inch iron bar also being said Hassel's southeast corner.

Thence with said Hassel's east line and the east line of Paul D. Powell's 0.150 acre tract as described in O. R. Vol. 316 page 962 N. 11° 22' 05" W. 100.30 feet to a point in the south line of K. and W. , an Ohio General Partnership's 0.20 acre tract as described in O. R. Vol. 125 Page 593, said point also being said Powell's northeast corner.

Thence with said K. and W.'s south line, the south line of Robert M. Abraham's 0.03 acre tract as described in O. R. Vol. 108 Page 281 and the south line of Irving Place Addition as shown in Plat Cabinet "A" Slide 47 N. 78° 50' 14" E. 355.42 feet to a point in the west line of Park Street.

Thence with the west line of Park St. S. 7° 14' 52" E. 10.73 feet to a point.

Thence parallel with and 10.00 feet from an existing 6 foot chain link fence the following four courses

- 1. S. 78° 55' 19" W. 343.83 feet to a point.
- 2. S. 11° 42' 58" E. 172.78 feet to a point.
- 3. S. 17° 42' 33" E. 213.56 feet to a point.
- 4. S. 0° 33' 59" W. 2.55 feet to a point.

Thence parallel with and 10.00 feet from the east line of said Palmer Additon S. 18° 35' 12" E. 47.22 feet to a point.

Thence again parallel with and 10.00 feet from the east line of said Palmer Additon S. 0° 29' 20" W. 17.10 feet to a point.

Thence S. 82° 47' 51" W. 10.09 feet to the place of beginning.

The above described easement being on the west and north sides of the Board of Education, Bellefontaine City School Dist.'s 11.41 acre tract as described in D. B. Vol. 234 page 17.

Bearings are based on an assumed bearing (N. 0° 29' 20" E.) for the west line of the Board of Education, Bellefontaine City School Dist.'s 11.41 acre tract as described in D. B. Vol. 234 page 17 in this field survey by Leslie H. Geeslin, Reg. Surveyor 5248 on July 10, 1997.

INDEXED ON MAP  
7159 ID



*Leslie H. Geeslin*

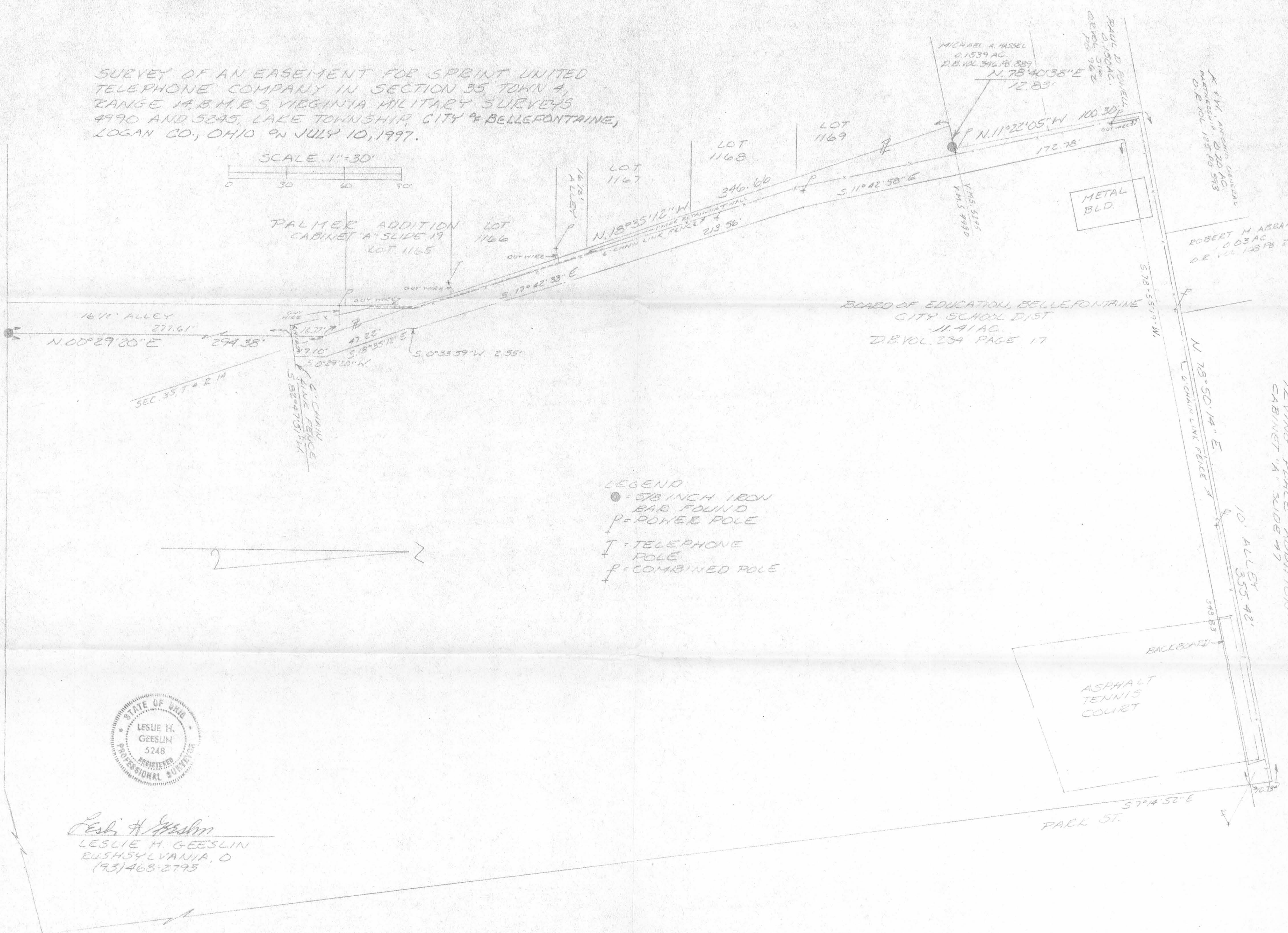


SURVEY OF AN EASEMENT FOR SPRINT UNITED TELEPHONE COMPANY IN SECTION 35, TOWN 4, RANGE 14, B.M.R.S, VIRGINIA MILITARY SURVEYS 4990 AND 5245, LAKE TOWNSHIP, CITY OF BELLEFONTAINE, LOGAN CO., OHIO ON JULY 10, 1997.

SCALE 1"=30'



WILLIAMS AVE.



LEGEND  
 ● = 578 INCH IRON BAR FOUND  
 P = POWER POLE  
 T = TELEPHONE POLE  
 P = COMBINED POLE



Leslie H. Geeslin  
 LESLIE H. GEESLIN  
 RUSH, SYLVANIA, O  
 (93) 468-2793

INDEXED ON MAP  
 7959 1P



Received 10-24-89

OK

**LESLIE H. GEESLIN**  
REGISTERED SURVEYOR NO. 5248  
P O. BOX 274  
RUSHSVLVANIA, OHIO 43347

TELEPHONE: (513) 468-2793

BELLEFONTAINE MIDDLE SCHOOL SURVEY  
October, 1989

The following described real estate situated in the State of Ohio, County of Logan, Township of Lake, being part of Virginia Military Surveys 4990 and 5245 and Section 35, Town 4, Range 14, B.M.R.S. in the City of Bellefontaine and more particularly described as follows:

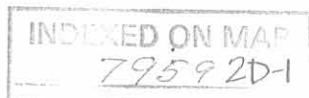
Beginning at a 5/8 inch iron bar set in the north line of Williams Avenue and the east line of a 16.5 foot alley on the east side of Palmer Addition.

Thence with the east line of said alley N.  $00^{\circ} 29' 20''$  E. 294.38 feet to a 5/8 inch iron bar set in the Ludlow Line.

Thence with said Ludlow Line and the east line of said Palmer Addition N  $18^{\circ} 35' 12''$  W. 346.34 feet to a P. K. nail set at the northwest corner of V.M.S. 4990 and the southwest corner of V.M.S. 5245 in the South line of Michael Hassel's 0.15 acre tract as described in D.B. Vol. 346 Page 889.

Thence with said Hassel's south line and said V.M.S. line N.  $78^{\circ} 40' 38''$  W. 12.77 feet to a 5/8 inch iron bar set.

Thence with the east line of said Hassel and Mark Hess' 0.14 acre tract as described in D B. Vol. 402 Page 739 N.  $11^{\circ} 22' 05''$  W. 100.30 feet to a 3 inch steel post found in the south line of Scott Ericksen's 0.20 acre tract as described in D. B. Vol. 405 Page 31.



Thence with said Ericksen's south line, the south line of R. W. Abraham's 0.03 acre tract as described in O.R. Vol. 58 Page 485 and the south line of Irving Place Addition N.  $78^{\circ}$  50' 14" E. 355.42 feet to a 5/8 inch iron bar set in the west line of Park Street.

Thence with said west line S.  $7^{\circ}$  14' 52" E. 772.94 feet to a P. K. nail set in the north line of Williams Avenue.

Thence with said north line S.  $74^{\circ}$  49' 25" W. 97.48 feet to a 5/8 inch iron bar set.

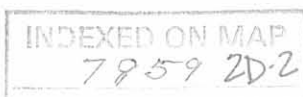
Thence with said north line West 237.00 feet to the place of beginning.

Containing 5.674 acres more or less of which 4.574 acres are in V.M.S. 4990, 0.76 acre is in V.M.S. 5245 and 0.34 acre is in Section 35, T. 4, R. 14, M.R.S.

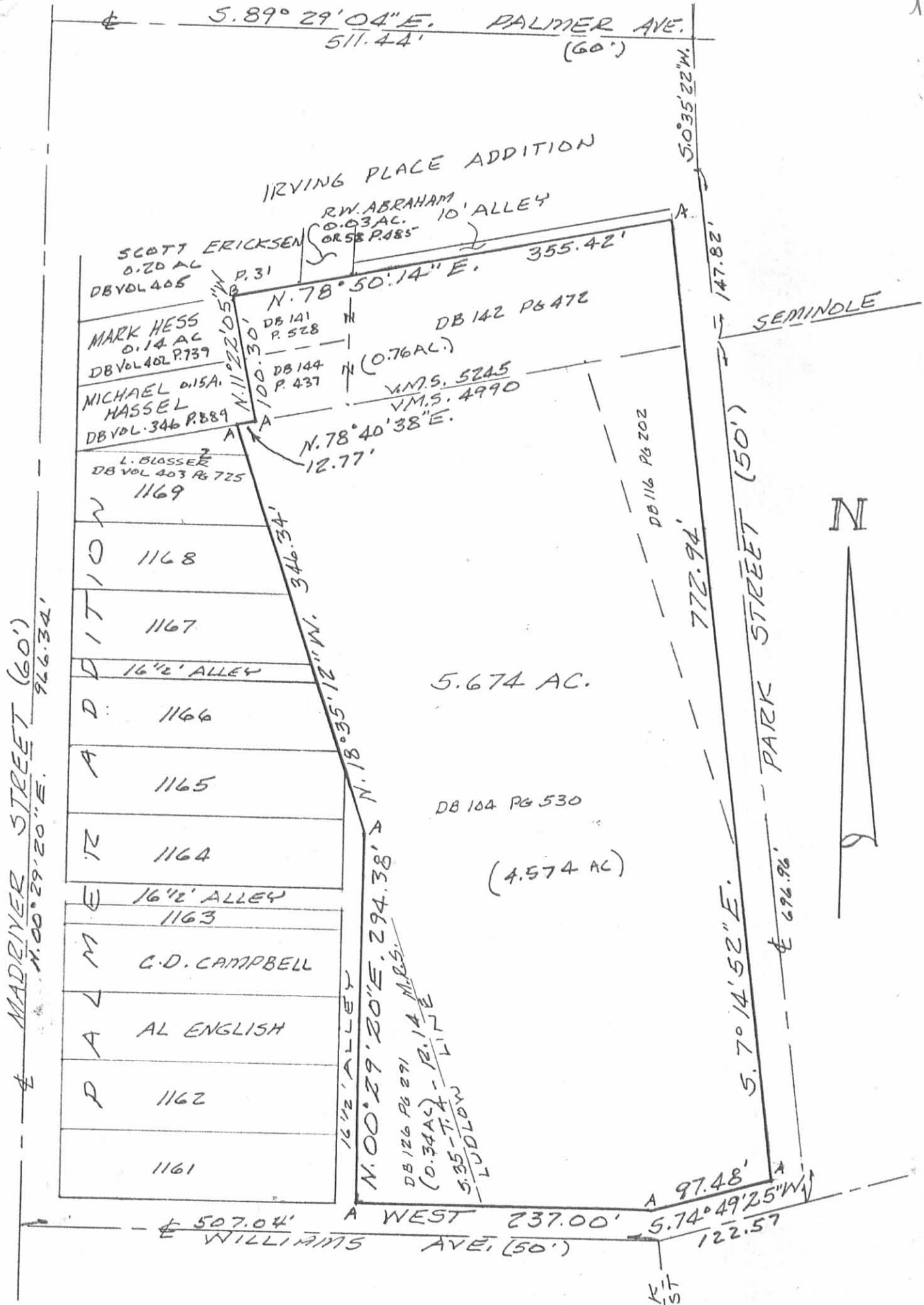
Reference is hereby made to a plat of this survey on file with the Logan County Engineer, in which the bearings are based on Williams Avenue in this field survey.



*Leslie H. Geeslin*



LEGEND:  
 A = 5/8" IRON BAR SET  
 B = 3" STEEL POST FD.



SURVEY OF 5.674 AC. TRACT  
 IN SECTION 35, TOWN 4, RANGE  
 14, B.M.R.S., VIRGINIA MILITARY  
 SURVEYS 4990 AND 5245, LAKE  
 TOWNSHIP, LOGAN COUNTY, OHIO  
 IN THE CITY OF BELLEFONTAINE  
 FOR BELLEFONTAINE BOARD OF  
 EDUCATION.  
 OCTOBER, 1989  
 SCALE: 1" = 100'



Leslie H. Geeslin  
 LESLIE H. GEESLIN  
 PUNXSUTAWNEY, OHIO

INDEXED ON MAP  
 7959 2P