

ANNEXATION MAP

TERRITORY TO BE ANNEXED TO THE CITY OF BELLEFONTAINE
 LOCATED IN SECTION 36, V.M.S. 2873 AND V.M.S. 5245
 LAKE TOWNSHIP, LOGAN COUNTY, OHIO

SCALE: 1" = 100'

LEGAL DESCRIPTION

SITUATED IN V.M.S. NO. 2873, V.M.S. NO. 5245 AND FRACTIONAL SECTION 36, TOWN 4, RANGE 14, LAKE TOWNSHIP, LOGAN COUNTY, OHIO.

BEING THAT LAND AS RECORDED IN THE FOLLOWING PAGES OF THE LOGAN COUNTY RECORD OF DEEDS: ALL OF THAT LAND IN THE NAME OF LOGAN COUNTY INDUSTRIAL GROWTH CORPORATION (VOLUME 374 PAGES 329 AND 330, AND VOLUME 324 PAGES 934 TO 936); PART OF THAT LAND IN THE NAME OF MIRIAM L. PETERS (VOLUME 393 PAGES 233 AND 234); PART OF THAT LAND IN THAT LAND IN THE NAME OF THE CITY OF BELLEFONTAINE, OHIO (VOLUME 324 PAGES 699 TO 704); PART OF THAT LAND IN THE NAME OF JACK E. SICKLES AND HELEN M. SICKLES (VOLUME 362 PAGES 380 TO 382); PART OF THAT LAND IN THE NAME OF RUTH V. WELDON (VOLUME 182 PAGE 465); AND PART OF THAT LAND IN THE NAME OF LURA M. DOWNING (VOLUME 384 PAGES 320 AND 321). THE ABOVE LAND IS BOUNDED AND MORE PARTICULARLY DESCRIBED AS FOLLOWS:

Beginning at an iron bar at the southeast corner of Fractional Section No. 35 and being in the Ludlow Line, said iron bar being also the northeast corner of the Columbian Heights Subdivision of the City of Bellefontaine and also being on the present north Corporation Line of said City;

thence N. 85°-16' W. a distance of 828.59 feet with the present north Corporation Line, said line being also the south line of Logan County Industrial Growth Corporation's 15.655 acre tract to a 1-inch pipe in the east right-of-way of the former Cleveland, Cincinnati, Chicago and St. Louis Railway Company;

thence with a line 40.00 feet east of and parallel with Track No. 294.0 of the former Cleveland, Cincinnati, Chicago and St. Louis Railway Company, the following six courses and distances, the first five thereof being chord bearings and distances to points on curves concentric with said centerline of track: N. 11°-52.32' E. 96.97 feet to an iron bar; N. 5°-54.97' E. 102.06 feet to an iron bar; N. 6°-05.85' E. 96.50 feet to an iron bar; N. 12°-40.41' E. 98.82 feet to an iron bar; N. 18°-24.67' E. 98.69 feet to an iron bar and N. 19°-55.23' E. 1079.25 feet to an iron bar in the south right-of-way line of U.S. Route 33, passing through an iron bar in the Ludlow Line in V.M.S. No. 2873 at 1,007.52 feet;

thence S. 69°-12' E. a distance of 164.63 feet with the north line of said 15.655 acre tract, being also the south right-of-way line of U.S. Route 33, to an iron bar in the northwest line of Miriam L. Peters' 5.69 acre tract;

thence N. 20°-30' E. a distance of 43.69 feet with the northwest line of said 5.69 acre tract, being also the south right-of-way line of U.S. Route 33;

thence southeasterly with the common line between said 5.69 acre tract and U.S. Route 33 on a curve to the right with a radius of 908.93 feet and an arc distance of 68.1 feet to an angle point in the south right-of-way line of U.S. Route 33;

thence S. 69°-12' E. a distance of 542.96 feet with the south right-of-way line of U.S. Route 33, being also the north line of a 3.40 acre tract belonging to the City of Bellefontaine (131.66 feet) and the north line of Logan County Industrial Growth Corporation's 11.54 acre tract (411.3 feet), to a point;

thence S. 61°-42' E. a distance of 692.7 feet with the line between said highway and said 11.54 acre tract to an iron bar in the present north Corporation Line of the City of Bellefontaine;

thence the following two (2) courses and distances with the present northerly and westerly Corporation Lines, said lines being also the easterly boundary of said 11.54 acre tract: N. 75°-01' W. a distance of 219.1 feet to an iron bar; S. 17°-26' W. a distance of 330.7 feet to an iron bar;

thence S. 2°-18' W. a distance of 303.6 feet with the present Corporation Line, being also the south-east line of said 11.54 acre tract (281.2 feet) and the northeast line of Jack E. Sickles et ux 2.58 acre tract (23.8 feet), to a point, which point is an angle point in the present Corporation Line;

thence N. 87°-21' W. a distance of 62.1 feet with the present Corporation Line, passing into said 2.58 acre tract, to a point, which point is an angle point in the present Corporation Line;

thence S. 17°-02' W. a distance of 481.86 feet with the present Corporation Line, said line first passing out of said 2.58 acre tract (66.6 feet), then passing thru Ruth V. Weldon's 1.426 acre tract (205.26 feet), whereupon said Corporation Line passes into V.M.S. No. 5245, then passing thru Lura M. Downing's 0.80 acre tract (99 feet), then passing into Jack E. Sickles et ux 2.5 acre tract (111 feet), to a point, said point being an angle point in the present Corporation Line;

thence N. 85°-16' W. a distance of 432.45 feet with the present Corporation Line said line passing out of said 2.5 acre tract (266.25 feet) and passing thru the City of Bellefontaine's 3.40 acre tract (166.2 feet), to the point of beginning.

CONTAINING 39.915 ACRES OF LAND MORE OR LESS, OF WHICH 15.009 ACRES ARE IN SECTION 36, 23.166 ACRES ARE IN V.M.S. NO. 2873, AND 1.74 ACRES ARE IN V.M.S. NO. 5245.

SURVEYOR'S CERTIFICATION

This ANNEXATION MAP represents an area of land that has been researched and compiled by me from available recorded deeds, maps and other records obtained on file in the Logan County Records and/or the City of Bellefontaine, Ohio. I hereby certify that this map is a correct representation of those records.

Donald A. Moore 11/29/88
 Harold A. Moore, S.S.
 Date

TRANSFERRED:

Logan County Auditor _____ Date _____
 RECORDED: Plat Book _____ Page _____
 Logan County Recorder _____ Date _____

Advance # 88-90 11/29/88
 Pres. of Council



DESCRIPTION CHECKED
 LOGAN CO. ENGINEER
 BY J.C.H. 12-20-88

Logan County Commissioners	Logan County Engineer
<i>Edward K. Cox</i> 11-29-88 Date	<i>Chester R. Kurtz</i> 12-2-88 Date
<i>Donald P. Brown</i> 11-29-88 Date	<i>Richard J. Dicran</i> 11-29-88 Mayor
<i>Shawn Kennedy</i> 11-29-88 Date	<i>Artyle E. Fredmire</i> 11/30/88 City Council
Bellefontaine City Planning Commission	Bellefontaine City Engineer
<i>Joseph A. Keels</i> 12-2-88 Date	<i>Timothy L. Noreine</i> 12/2/88 Date
Township Trustees	L.U.C. Planning Director
<i>James C. Connelly</i> 11/29/88 Date	<i>Carman L. Best</i> 11/29/88 Date
	<i>Howard Johnson Jr.</i> 12/1/88 PRES. CITY COUNCIL

PREPARED BY:
H. A. MOORES & ASSOC., INC.
 1224 South Main Street
 Bellefontaine, Ohio 43311

SURVEY INDEX
 7865 1P



DESC FOR
DEED / MTG

DEPARTMENT OF PUBLIC SERVICE

OFFICE OF CITY ENGINEER

MUNICIPAL BUILDING 135 NORTH DETROIT STREET
PHONE: 513-593-0417

Bellefontaine, Ohio 43311

J and B PROPERTIES
~~AGUSPORT CORPORATION~~ LOT DESCRIPTION

May 3, 1989

The following described real estate situated in the State of Ohio, County of Logan, Township of Lake, and being part of Virginia Military Surveys 2873 and 5245 and Section 36, Town 4, Range 14, in the City of Bellefontaine and more particularly described as follows:

Beginning at an 0.625 inch iron bar bound in the Ludlow line at the northeast corner of Columbian Heights Addition;

Thence with the north line of said Columbian Heights Addition and the north line of a 14.56 acre tract conveyed to Discon Services, Inc. as described in O. R. Vol. 13, Page 156, N. 79° 55' 19" W. 700.00 feet to a 0.625 inch iron bar set (this bearing is assumed and all other bearings are from angles and distances measured in the field survey.)

Thence N.10° 04' 41" E. 656.08 feet to a 0.625 inch iron bar set.

Thence N.25° 12' 30" E. 107.66 feet to a 0.625 inch iron bar set.

Thence S.79° 55' 19" E. 513.48 feet to a 0.625 inch iron bar set in the west right of way line of proposed Hunter Place.

Thence with said west right of way line on a curve to the left with a radius of 80.00 feet, an arc length of 102.18 feet, long chord bearing S. 48° 30' 35" E. 95.37 feet to a 0.625 inch iron bar set.

Thence continuing with said west right-of-way line on a curve to the right with a radius of 30.00 feet, an arc length of 44.39 feet, long chord bearing S.42° 42' 25" E. 40.45 feet to a 0.625 inch iron bar set.

Thence continuing with the said west right-of-way line S. 00° 18' 54" E. 697.27 feet to a 0.625 inch iron bar set.

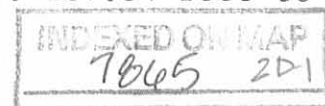
Thence N. 79° 55' 19" W. 80.98 feet to the point of beginning. Containing 12.277 acres more or less.

The above described 12.277 acre tract having 2.029 acres in V.M.S. 2873, 0.397 acres in V.M.S. 5245 and 9.851 acres in Section 36, Town 4, Range 14.

Excepting therefrom the following described real estate situated in the State of Ohio, County of Logan, Township of Lake, being part of Virginia Military Survey 5245 in the City of Bellefontaine and more particularly described as follows:

Beginning at a 0.625 inch iron bar found in the Ludlow line at the northeast corner of Columbian Heights Addition.

Thence with said Ludlow Line N. 9° 16' 39" W. 187.84 feet to a stone found.



Thence with the common east west line of Virginia Military Surveys 2873 and 5245 S. $82^{\circ} 44' 20''$ E. 109.87 feet to a 0.625 inch bar set in the west right of way line of proposed Hunter Place.

Thence with said west right of way line S. $0^{\circ} 18' 54''$ 185.67 feet to a 0.625 inch iron bar set at the projection of the north line of said Columbian Heights Addition.

Thence along said projection N. $79^{\circ} 55' 19''$ W. (this bearing is assumed and all other bearings are from angles and distances measured in this field survey) 80.98 feet to the place of beginning.

Containing 0.397 acres more or less and being in V.M.S. 5245.

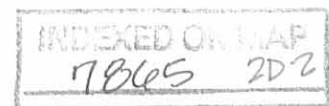
Leaving after exception 11.88 acres, more or less.

Reference is hereby made to the accompanying plat on file with the Logan County Engineer.

Subject to all legal right of ways, easements and restrictions of record.

This description prepared from an actual field survey performed in April 1989.

Leslie H. Geeslin
Rushsylvania, Ohio



Received 1-3-89

OK 1-4-89

LESLIE H. GEESLIN
REGISTERED SURVEYOR NO. 5248
P. O. BOX 274
RUSHSVLVANIA, OHIO 43347



TELEPHONE: (513) 468-2793

SURVEY OF PROPOSED INDUSTRIAL PARK FOR THE CITY OF BELLEFONTAINE
December, 1988

The following described real estate situated in the State of Ohio, County of Logan, Township of Lake, being part of Virginia Military Surveys 2873 and 5245 and Section 36, Town 4, Range 14 in the City of Bellefontaine and more particularly described as follows:

Beginning at a 0.625 inch iron bar found in the Ludlow Line at the northeast corner of Columbian Heights Addition.

Thence with the north line of said Columbian Heights and the north line of Discon Services, Inc.'s 14.56 acre tract as described in O. R. Vol. 13 Page 156 N. $79^{\circ} 55' 19''$ W. 829.71 feet to a 0.625 inch iron bar set in an east line of the C. C. C. & St. L. R. R. Co., said iron being S. $79^{\circ} 55' 19''$ E. 80.21 feet from a 2 inch iron pipe found at the northwest corner of said 14.56 acre tract.

Thence with said C. C. C. & St. L. R. R.'s east line N. $17^{\circ} 12' 39''$ E. 96.96 feet to a 0.625 inch iron bar found.

Thence with said east line N. $11^{\circ} 11' 40''$ E. 102.04 feet to a 0.625 inch iron bar found.

Thence with said east line N. $11^{\circ} 16' 51''$ E. 96.51 feet to a 0.625 inch iron bar found.

Thence with said railroad's east line N. $18^{\circ} 11' 21''$ E. 98.77 feet to a 0.625 inch iron bar found.

Thence with said east line N. $23^{\circ} 44' 11''$ E. 98.60 feet to a 0.625 inch iron bar found.

Thence with said Railroad's east line N. $25^{\circ} 12' 30''$ E. 1079.09 feet to a 0.625 inch iron bar found.

Thence with a south line of said Railroad S. $63^{\circ} 53' 22''$ E. 159.16 feet to a 0.625 inch iron bar set.

Thence with another south line of said Railroad N. $26^{\circ} 02' 38''$ E. 53.51 feet to a 0.625 inch iron bar set that is 115.51 feet right of tangent Station 815 plus 07.47 of U. S. R. 33.

Thence with another south line of said C. C. C. & St. L. R. R. on a 908.93 feet radius curve to the right, the chord of which measures S. $31^{\circ} 46' 24''$ E. 68.08 feet, to a 0.625 inch iron bar set at the beginning of a limited access right-of-way for said U. S. R. 33.

Thence with said right-of-way S. $64^{\circ} 06' 38''$ E. 544.52 feet to a 0.625 inch iron bar set.

Thence with said right-of-way S. $56^{\circ} 29' 42''$ E. 692.02 feet to a 1 inch iron bar found.

Thence with the north line of Standard Oil Company's 0.61 acre tract as described in D. B. Vol. 307 Page 609 N. $69^{\circ} 48' 21''$ W. 219.10 feet to a 0.75 inch iron bar found.

Thence with the west line of said Company's 0.66 acre tract, said Company's 1.07 acre tract and the west line of Bernard Pool's 1.00 acre tract as described in D. B. Vol. 379 Page 820 S. $22^{\circ} 38' 43''$ W. 330.55 feet to a 0.625 inch iron bar set.

Thence with said west line of said Pool's 0.88 acre tract as described in D. B. Vol. 220 Page 74, the west line of said Pool's 0.65 acre tract as described in D. B. Vol. 392 Page 860 and the west line of Mary F. Sours' 0.70 acre tract as described in D. B. Vol. 184 Page 638 S. $7^{\circ} 29' 02''$ E. 281.06 feet to a 1 inch iron bar found.

Thence with the north line of Jack E. Sickles' 2.58 acre tract as described in D. B. Vol. 362 Page 380 N. $82^{\circ} 07' 58''$ W. (this bearing is assumed and all other bearings are from angles and distances measured in this field survey) 511.76 feet to a 1 inch iron bar found in the east line of the old C. & L. E. Traction Line.

Thence with said east line S. $1^{\circ} 05' 40''$ W. 874.26 feet to a 0.625 inch iron bar set in the north line of Reynolds Avenue.

Thence with said north line N. $79^{\circ} 20' 43''$ W. 81.13 feet to a 0.625 inch iron bar set at the southeast corner of John R. Hafner's 0.33 acre tract as described in D. B. Vol. 384 Page 280.

Thence with said Hafner's east line and the west line of said Traction Line N. $1^{\circ} 05' 40''$ E. 57.73 feet to a 0.625 inch iron bar set.

Thence with said Hafner's north line N. $77^{\circ} 54' 20''$ W. 22.72 feet to a 0.625 inch iron bar set in the Ludlow Line.

Thence with said Ludlow Line and the east line of said Columbian Heights Addition N. $9^{\circ} 16' 39''$ W. 345.82 feet to the place of beginning.



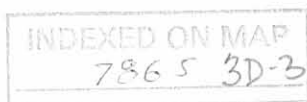
Containing 37.855 acres more or less.

The above described 37.855 acre tract having 14.87 acres in Section 36, 21.10 acres in V. M. S. 2873 and 1.885 acres in V. M. S. 5245.

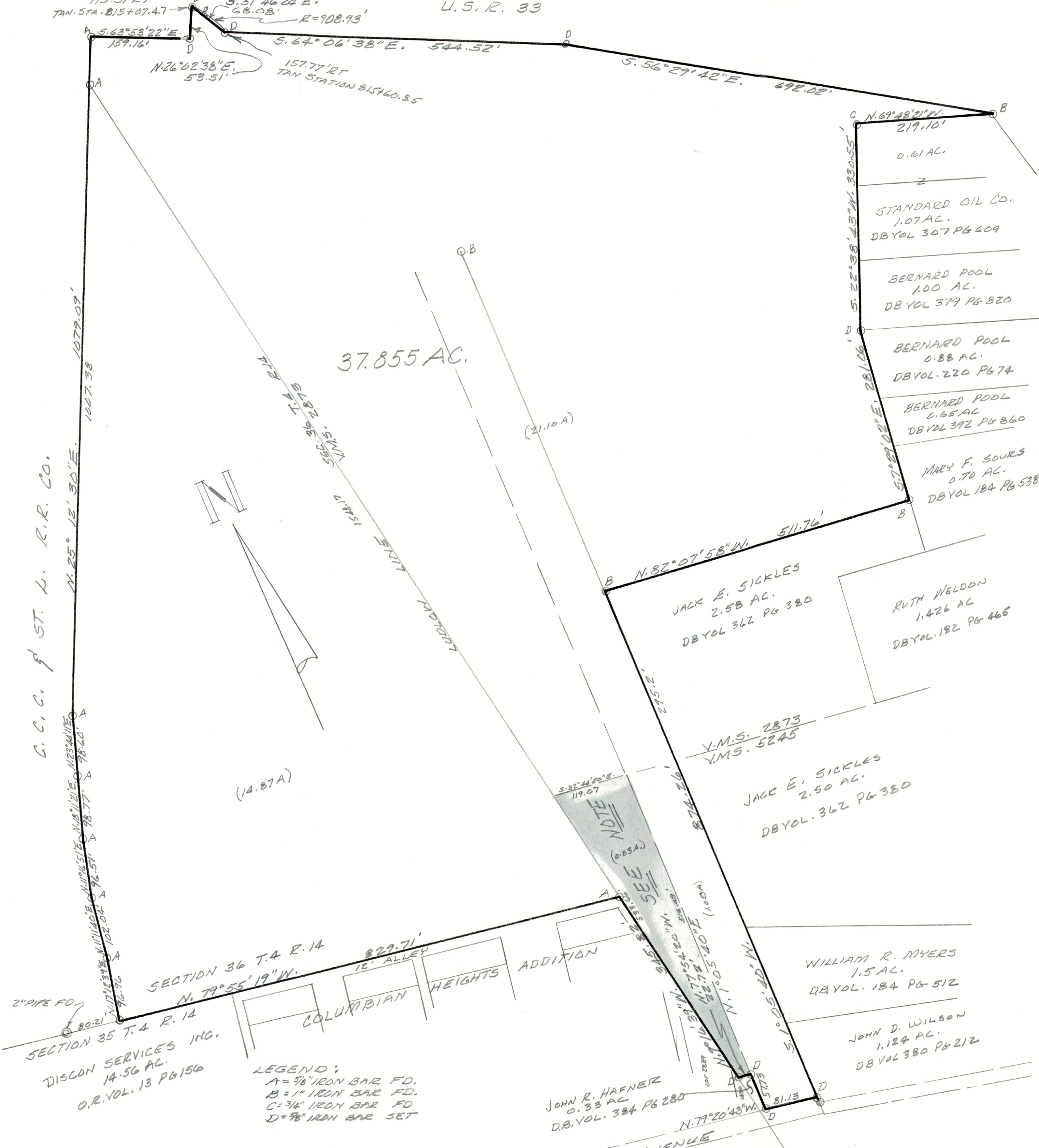
Reference is hereby made to a plat of this survey on file with the Logan County Engineer and the Bellefontaine City Engineer. Subject to all legal right-of-ways and easements.



Leslie H. Geeslin



C. C. C. of ST. L. R.R. CO.



37.855 AC.



LEGEND:
 A = 3/8" IRON BAR FD.
 B = 1" IRON BAR FD.
 C = 3/4" IRON BAR FD.
 D = 3/8" IRON BAR SET

SURVEY OF 37.855 AC. TRACT IN SECTION 36, T. 4 R. 14, RANGE 14, VIRGINIA MILITARY SURVEYS 2873 AND 5245, LAKE TOWNSHIP, LOGAN COUNTY, OHIO IN THE CITY OF BELLEFONTAINE FOR THE CITY OF BELLEFONTAINE.
 DECEMBER, 1988
 SCALE: 1"=100'

NOTE:
 THIS SURVEYOR DID NOT FIND A DEED TO THE CITY FOR THIS 0.83 AC. PARCEL. THIS PARCEL IS INCLUDED IN THIS SURVEY. LEGAL ADVICE IS RECOMMENDED.



INDEXED ON MAP
7865

Leslie H. Geeslin
 LESLIE H. GEESLIN
 RUSHSVLVANIA, OHIO