

REF:
Southview Addition No.2
Plat Book D Vol.4 Pg.3

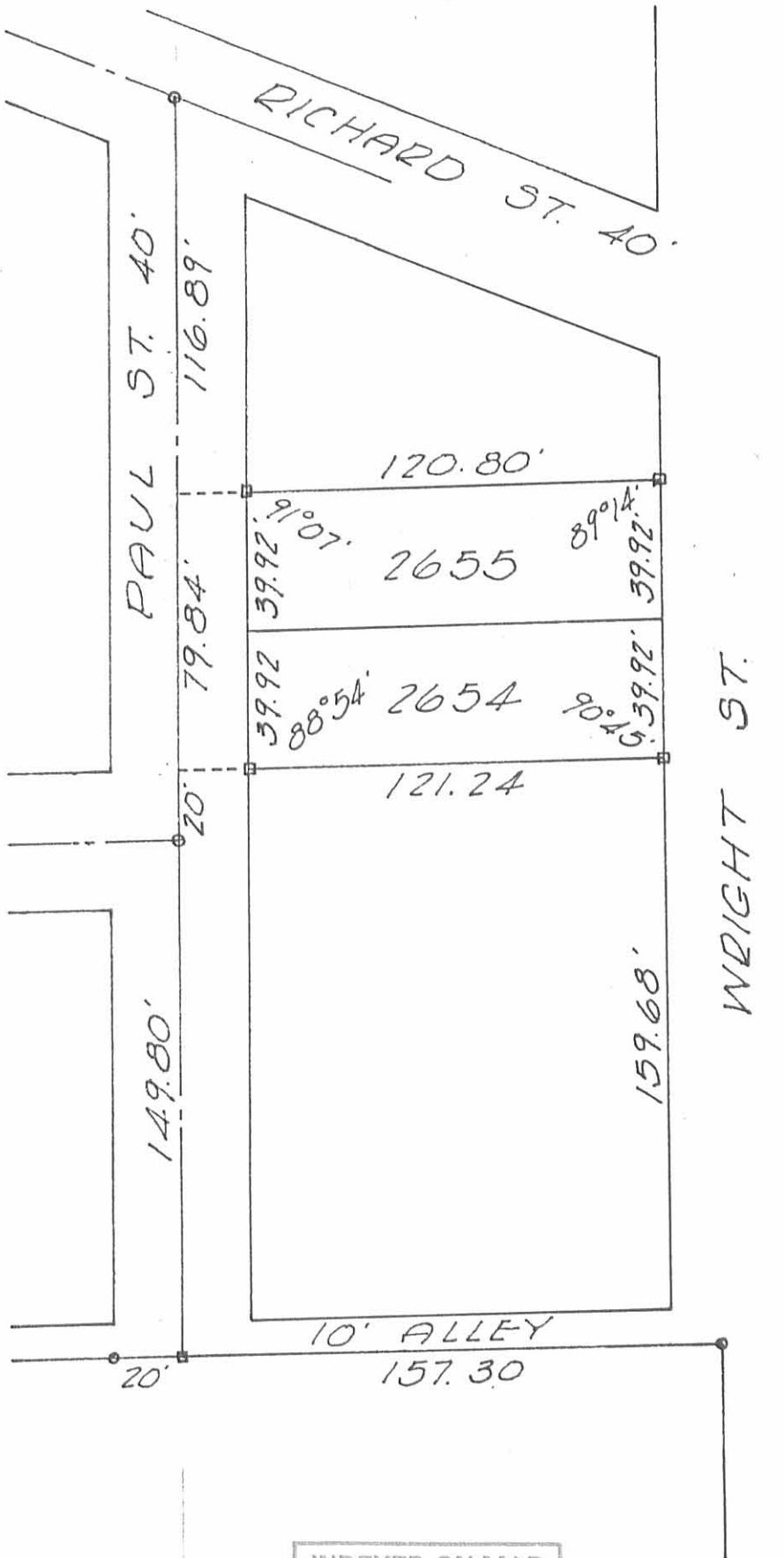
SURVEY OF
LOT 3828
SOUTHVIEW ADDITION No.2
BELLEFONTAINE, OHIO
April 10, 1962
SCALE 1"=20'

I hereby certify that this plat is a correct representation of a survey made by me and that same shows the improvements as located on the premises.

The encroachments are as indicated on the plat.

INDEXED ON MAP
7507 IP

Dan L. Dodson
Dan L. Dodson Reg. Surveyor 4270



INDEXED ON MAP
7507 2P



SURVEY OF
LOTS 2655-2654
BELLEFONTAINE, O.
DEC. 11, 1965
SCALE 1" = 50'

Dan L. Dodson

Dan L. Dodson & Assoc.
Reg. Surveyor 4270
Bellefontaine, Ohio

REFERENCE:
Iron City Heights
Plat Bk A, Vol. 1, Pg. 55
City Eng. F.B. 262, Pg 65

o = Iron Found
□ = Tld. Hub Set

SURVEY OF LOT 3828
SOUTHVIEW ADD. No. 2
BELLEFONTAINE

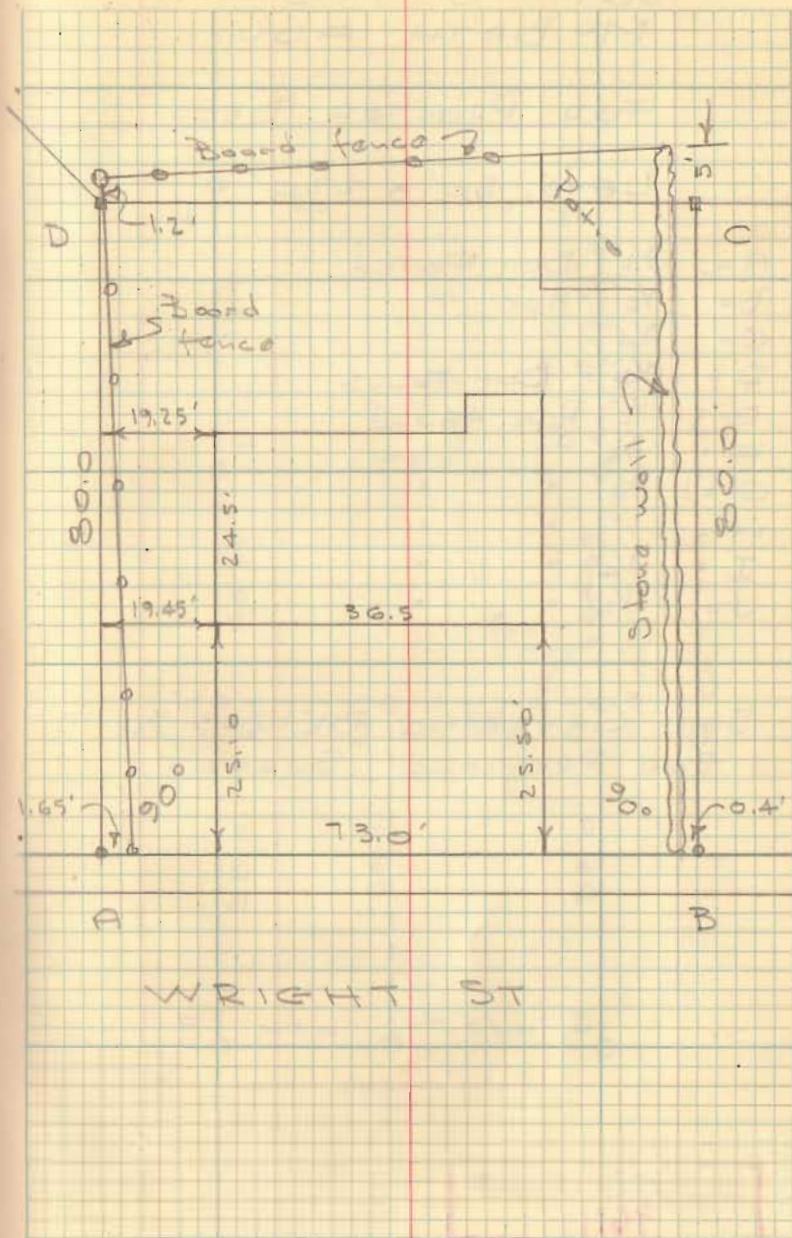
- A = $\frac{3}{4}$ " Pipe found @ edge of conc. walk (in conc. walk)
 B = $\frac{3}{4}$ " Pipe found @ edge of walk
 C = $\frac{3}{8}$ " Bar Set
 D = $\frac{5}{8}$ " Bar Set (found $1\frac{1}{2}$ " flat 18" deep)

SOUTH VIEW ADD. No. 2
PLAT Bk. D, Vol. 4, Pg. 3

Prop. Line @ E. edge of walk

Dodson
Touis

4-10-62
60° 30



INDEXED ON MAP
7507

Lot 3828

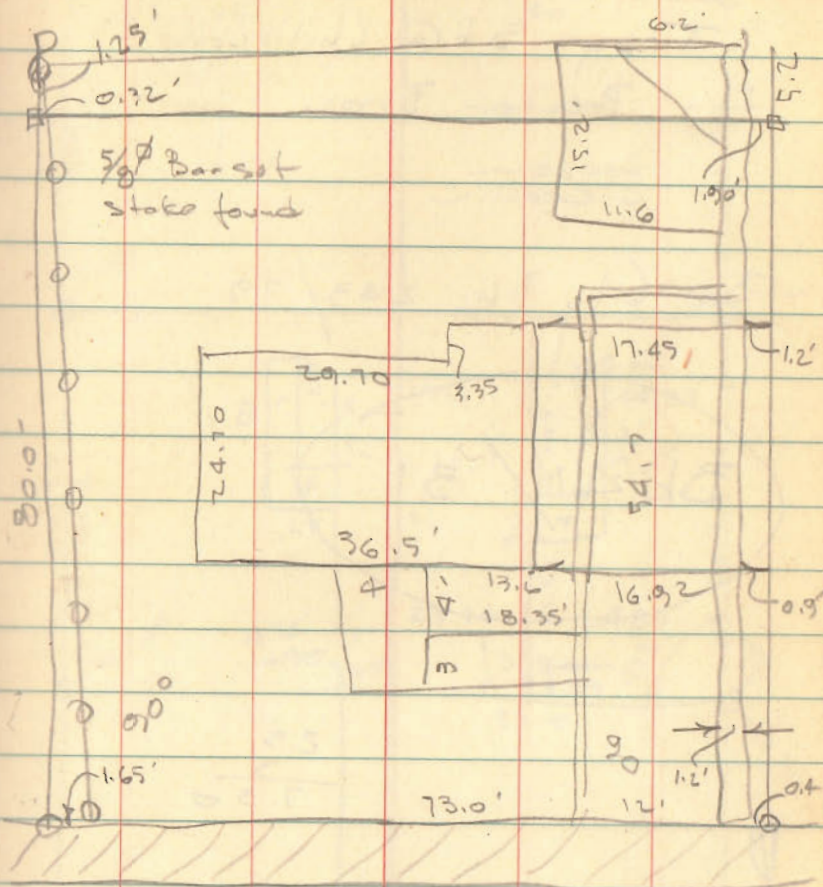
Southview Add. 2

Bk 4/30

Dodson
Lewis

4-10-62

25



Wright St.

INDEXED ON MAP
7507