

RECID 2-9-05 SMM dk

# Lee Surveying and Mapping Co., Inc.

Land Surveys • Topography • Subdivisions • Construction Layout

117 N. Madriver St.  
Bellefontaine OH 43311



Phone: (937) 593-7335  
Fax: (937) 593-7444

## VELLENGA 0.140 ACRE

Lying in the City of Bellefontaine, Lake Township, Logan County, Ohio.

Being all of the Mildred E. Vellenga part of Lot 1829 of McLaughlin and McKee Addition (Plat Cabinet A, Slide 29) as deeded and described in Official Record 186, Page 922 of the Logan County Records of Deeds and being more particularly described as follows:

Beginning at a stone found in a monument box on the intersection of center-lines of Brown Avenue (60 feet wide) and Stanley Street (now vacated, Ordinance No. 84-70, Vol. 407, Pg. 721).

THENCE, with the center-line extended of Stanley Street, N 1°-04'-18"E, a distance of 30.00 feet to a point on the north right-of-way of Brown Avenue, passing a MAG nail found at 28.00 feet.

THENCE, with the north right-of-way of Brown Avenue, N 89°-58'-18"E, a distance of 66.96 feet to a point in concrete at the TRUE POINT OF BEGINNING, referenced by a MAG nail set S 1°-06'-54"W, a distance of 2.00 feet and a 3/4 inch iron pipe found S 58°-41'-06"W, a distance of 0.31 feet.

THENCE, with the east line of the Frederick J. Shoffner part of Lot 1829 (O.R. 420, Pg. 326), N 1°-06'-54"E, a distance of 129.89 feet to a 3 inch round metal fence post found, passing a 3/4 inch iron pipe found at 129.75 feet.

THENCE, with the south line of the Rita L. Burkhammer part of Lot 1829 (O.R. 230, Pg. 786), S 89°-56'-16"E, a distance of 46.94 feet to a 3/4 inch iron pipe found.

THENCE, with the west line of the Leslie H. McDonald part of Lot 1829 (Vol. 361, Pg. 482), S 1°-06'-14"W, a distance of 129.82 feet to a 5/8 inch iron rod set on the north right-of-way of Brown Avenue, referenced by a 3/4 inch iron pipe found S 32°-35'-57"E, a distance of 0.09 feet.

THENCE, with the north right-of-way of Brown Avenue, S 89°-58'-18"W, a distance of 46.97 feet to the point of beginning.

Containing 0.140 acre.

The basis for bearings is the center-line of Brown Avenue, being N 89°-58'-18"E, and all other bearings are from angles and distances measured in a field survey by Lee Surveying and Mapping Co., Inc. on February 7, 2005.



ORIGINAL STAMP IN GREEN

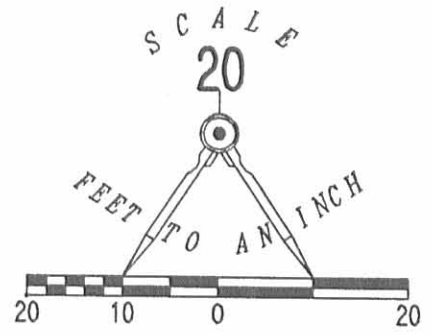
Description prepared by:

*Jeffrey I. Lee*  
Jeffrey I. Lee  
Professional Surveyor 6359  
February 8, 2005

L-3973

INDEXED ON MAP  
7277 ID

RITA L. BURKHAMMER  
PART OF LOT 1829  
O.R. 230, PG. 786



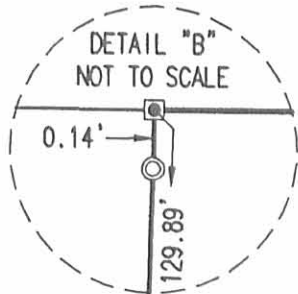
VACATED STANLEY STREET  
ORDINANCE NO. 92-18

SEE  
DETAIL "B"

S 89°56'16" E  
46.94'

LEGEND:

- ⊙ 3/4 INCH IRON PIPE FOUND
- ⊠ 3 INCH ROUND METAL FENCE POST FOUND
- ⊘ MAG NAIL FOUND
- ⊞ STONE FOUND IN MONUMENT BOX
- 5/8 INCH IRON ROD SET
- ⊙ MAG NAIL SET

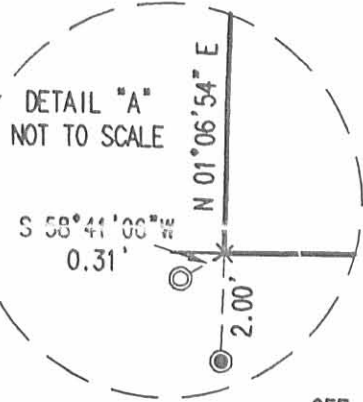


0.140 ACRE

FREDERICK J. SHOFFNER  
PART OF LOT 1829  
O.R. 420, PG. 326

MILDRED E. VELLENGA  
PART OF LOT 1829  
O.R. 186, PG. 922

LESLIE H. McDONALD  
PART OF LOT 1829  
VOL. 361, PG. 482

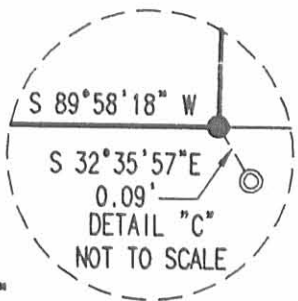


N 89°58'18" E 66.96'

SEE  
DETAIL "A"

46.97'

SEE  
DETAIL "C"



N 01°04'18" E 2.00'

N 01°06'54" E 2.00'

S 89°58'18" W

30.00'  
N 01°04'18" E

BROWN AVENUE (60')

N 89°58'18" E 144.84'  
(BASIS FOR BEARINGS)

RETRACEMENT SURVEY OF THE  
MILDRED E. VELLENGA  
PART OF LOT 1829

McLAUGHLIN AND McKEE ADDITION  
PLAT CABINET A, SLIDE 29  
OFFICIAL RECORD 186, PAGE 922  
CITY OF BELLEFONTAINE  
LAKE TOWNSHIP  
LOGAN COUNTY, OHIO

SURVEYED BY:



*[Signature]*  
JEFFREY I. LEE  
PROFESSIONAL SURVEYOR 6359  
FEBRUARY 7, 2005

COPYRIGHT 2005 BY:  
LEE SURVEYING & MAPPING CO., INC.  
117 North Madriver Street  
BELLEFONTAINE, OHIO 43311  
(937) 593-7335

2 WORKING DAYS  
BEFORE YOU DIG  
CALL TOLL FREE 800-362-2764  
OHIO UTILITIES PROTECTION SERVICE.

INDEXED ON MAP  
7277 1P

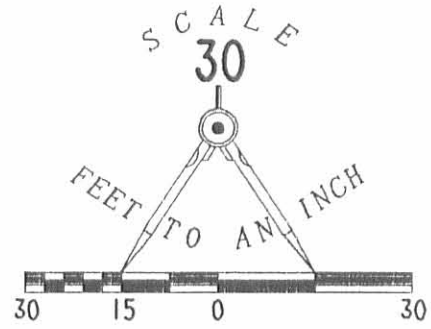
ORIGINAL STAMP IN GREEN

Rec'd 8-18-99 okgch

STANLEY STREET

LEGEND

- 5/8" IRON ROD SET
- 3/4" IRON ROD FOUND
- ⊙ MAG NAIL SET



RITA L. BURKHAMMER  
AND RICHARD A. SMITH  
PT. LOT 1829  
O.R. 230. PG. 786

VACATED STANLEY ST.  
ORDINANCE NO 92-18

VACATED STANLEY ST. (40' WIDE)  
ORDINANCE NO 84-70

LOT 1828

20.00' S 89° 48' 59" E  
67.05'

FREDRICK J. SHOFFNER  
AND LINDA K. SHOFFNER  
PT. LOT 1829  
O.R. 420. PG. 326

MILDRED E. VELLENGA  
PT. LOT 1829  
O.R. 186. PG. 922

N 01° 04' 18" E  
130.00'

129.92'  
S 01° 13' 54" W

66.69'  
N 89° 53' 36" W  
2.00'  
N 01° 04' 18" E

BROWN AVENUE (40')

RETRACEMENT SURVEY OF THE  
FREDRICK J. SHOFFNER AND  
LINDA K. SHOFFNER  
PART OF LOT 1829 AND  
ONE HALF OF VACATED STANLEY STREET  
McLAUGHLIN AND McKEE ADDITION  
PLAT CABINET A. SLIDE 29  
CITY OF BELLEFONTAINE  
LAKE TOWNSHIP  
LOGAN COUNTY, OHIO

INDEXED ON MAP  
7277 2D



ORIGINAL STAMP IN GREEN

SURVEYED BY:

*[Signature]*  
JEFFREY I. LEE  
PROFESSIONAL SURVEYOR 6359  
AUGUST 13, 1999

COPYRIGHT 1999 BY:

LEE SURVEYING & MAPPING CO., INC.  
117 North Madriver Street  
BELLEFONTAINE, OHIO 43311  
(937) 593-7335

D 352 SHOFFNER

L-2788-4

2 WORKING DAYS  
**BEFORE YOU DIG**  
CALL TOLL FREE **800-362-2764**  
OHIO UTILITIES PROTECTION SERVICE.