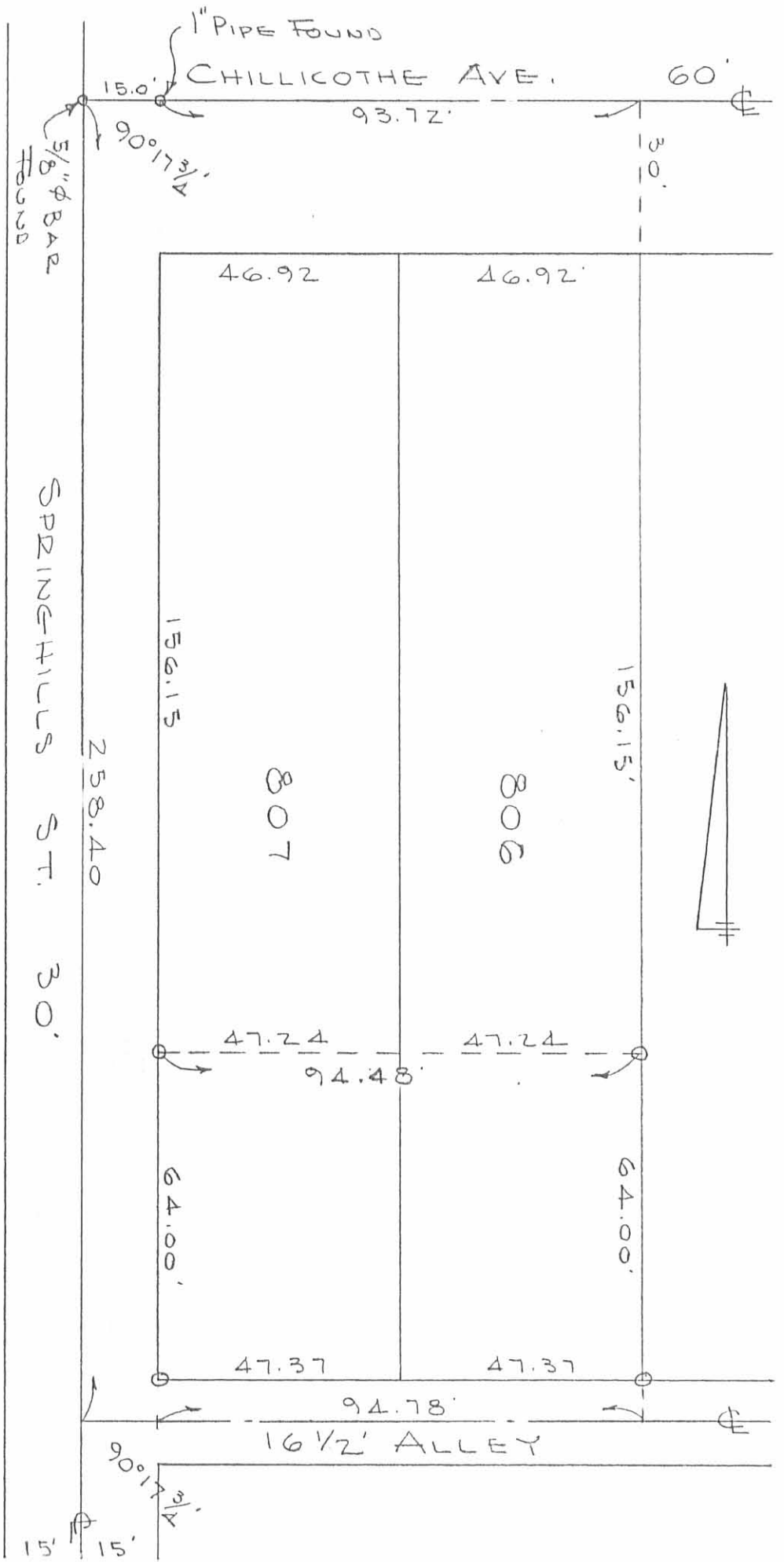


PART LOTS 806-807
BELLEFONTAINE, OHIO
April 28, 1971

The following described real estate situated in the City of Bellefontaine, Harrison Township, Logan County, Ohio and being part of Lots 806 and 807 of McBeth's Addition as shown on Logan County Recorders Plat Book A, Volume 1, Page 13 and more particularly described as follows:

Being 64.0 feet off the south end of Lot No. 806 and Lot No. 807 of said McBeth's Addition to the City of Bellefontaine, Ohio.

INDEXED ON MAP
7210 1D



SURVEY OF
 PART LOT 806 & 807
 BELLEFONTAINE, OHIO
 APRIL 29, 1971
 SCALE 1" = 30'
 O = 5/8" ϕ BAR SET

REF:
 MCBETH ADDITION
 PLAT B.C.A., VOL. 1, PG. 13
 CITY ENG. F.B. 262 PG. 51

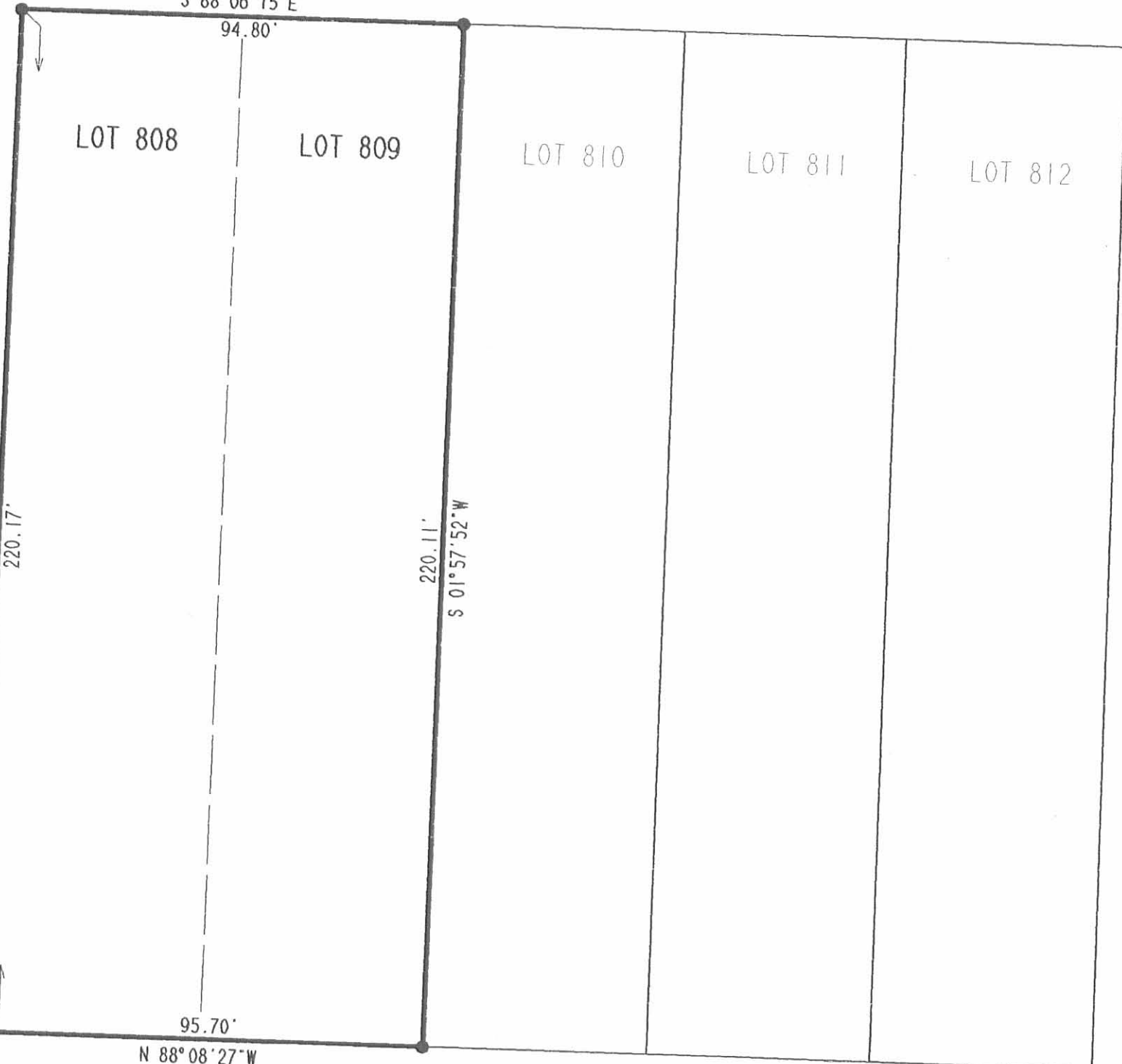
INDEXED ON MAP
 7210 1P

DAN L. DOBSON
 REG. SURVEYOR 42710
 BELLEFONTAINE, OHIO
 F.B. 17/77

REC'D 12-21-00

2 WORKING DAYS
BEFORE YOU DIG
CALL TOLL FREE **800-362-2764**
OHIO UTILITIES PROTECTION SERVICE.

16.5' PUBLIC ALLEY
S 88°06'15"E

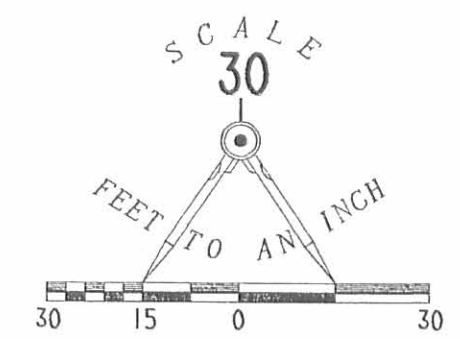


SPRINGHILL STREET (30'R/W)

ST. PARIS STREET (30'R/W)

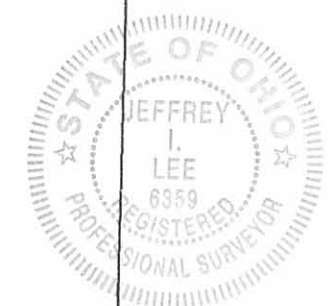
AUBURN AVENUE (60'R/W)

INDEXED ON MAP
7210 2P



- LEGEND
- 5/8 INCH IRON ROD FOUND
 - 5/8 INCH IRON ROD SET

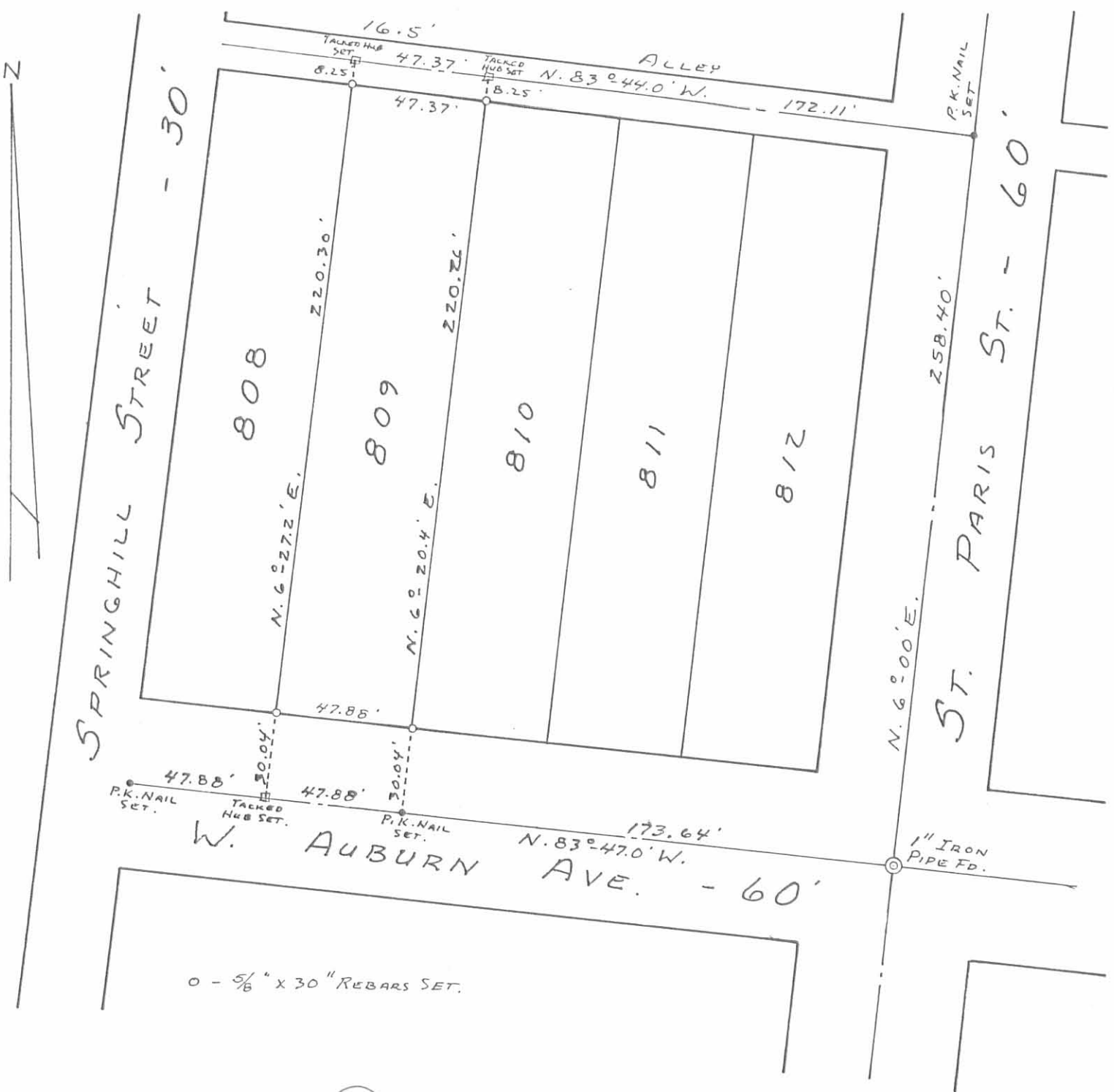
RETRACEMENT SURVEY OF THE
KEITH A. VOTAW TRACT
OFFICIAL RECORD 455, PAGE 439
LOTS 808 AND 809 OF THE
McBETH'S ADDITION TO
THE CITY OF BELLEFONTAINE
PLAT CABINET A, SLIDE 11
LAKE TOWNSHIP
LOGAN COUNTY, OHIO



ORIGINAL STAMP IN GREEN

SURVEYED BY:
[Signature]
JEFFREY I. LEE
PROFESSIONAL SURVEYOR 6359
DECEMBER, 13, 2000

COPYRIGHT 2000 BY:
LEE SURVEYING & MAPPING CO., INC.
117 North Madriver Street
BELLEFONTAINE, OHIO 43311
(937) 593-7335



0 - 5/8" x 30" REBARS SET.

7210 3P

INDEXED ON MAP

SURVEY OF LOT No. 809
 CITY OF BELLEFONTAINE
 HARRISON TOWNSHIP
 LOGAN COUNTY OHIO
 AUGUST 25, 1984

SCALE: 1" = 50'

SURVEYED AND PLATTED BY:
 DANIEL E. GILBERT, P.S.,
 REG. SUR. NO. 5402
 105 ORGAN ST.
 BELLEFONTAINE, OHIO 43311