

SURVEY OF  
 LOT 58 & 51 PART  
 BELLEFONTAINE, OHIO  
 FOR  
 BELLEFONTAINE FEDERAL SAVINGS & LOAN  
 JULY 31, 1971  
 SCALE 1" = 10'

**BENCH MARKS**  
 NOTE: ADD 1200.0' TO ELEVATIONS INDICATED  
 FOR U.S.G.S. DATUM

B.M. No. 1  
 U.S.G.S. STD. POST 20' WEST OF NORTH  
 DOOR OF COURT HOUSE  
 ELEV. 1251.06

B.M. No. 2  
 CHISELED CROSS AT NORTHWEST CORNER OF  
 HOTEL PROPERTY  
 ELEV. 1236.45

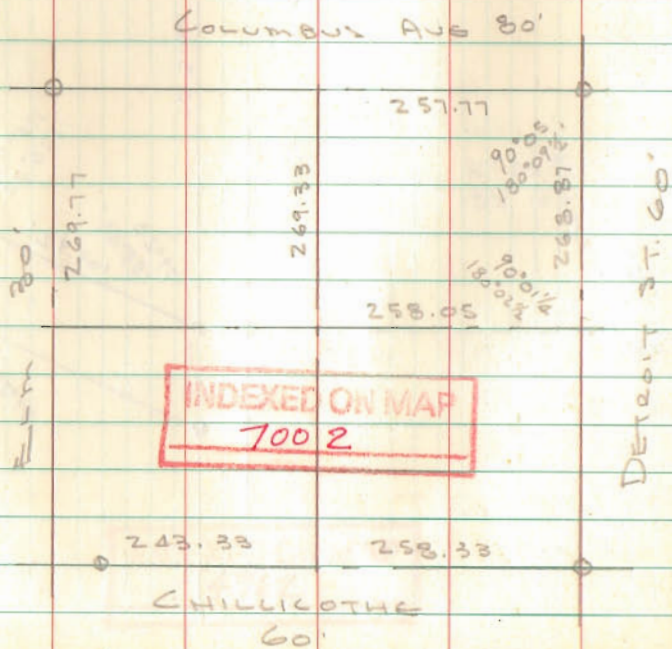
**UTILITIES**  
 POWER & GAS - DAYTON POWER & LIGHT CO  
 BELLEFONTAINE, OHIO  
 WATER & SANITARY - CITY OF BELLEFONTAINE  
 TELEPHONE - UNITED TELEPHONE CO.  
 BELLEFONTAINE, OHIO

NOTE: UTILITY LOCATIONS FROM RECORDS  
 OF THE CITY ENGINEER  
 BELLEFONTAINE, OHIO

DAN L. DODSON  
 REG. SURVEYOR 4270  
 BELLEFONTAINE, OHIO

LOT 58 & 51 PART  
BELLEFONTAINE

ON	FROM	TO	PLAT	MEAS	+OR-
COLUMBUS DET.	ELM	501.5	500.55	-0.95	
DETROIT COL.	CHILLI	526.5	527.62	+1.12	
CHILLICOTHE DET	ELM	501.5	501.65	+0.15	
ELM					



Dodson  
D. Brooks

7/29/71

24

