

Lee Surveying and Mapping Co.



Farm Surveys • Lot Surveys • Descriptions • Subdivisions

855 EAST SANDUSKY AVENUE
BELLEFONTAINE, OHIO 43311

CLAYTON M. LEE, P. S.
(513) 593-5780

J. A. ROESHMAN et al. PROPERTY SPLIT

(Bob's Pizza Location)

Lying in Section 34, T-4, R-14 and being in the City of Bellefontaine, Lake Township, Logan County, Ohio and being the south part of that 1.05 acres described and deeded in Volume 335, Page 542 of the Logan County Records of Deeds and more particularly described as follows:

Beginning at a nail found on the bridge where the east property line of South Main Street intersects the center-line of Blue Jacket Creek. Said point lying 30 feet east of the center-line of South Main Street.

THENCE, with said east property line, North, a distance of 81.00 feet to an iron spike.

THENCE, East, a distance of 248.70 feet to an iron rod set in the west line of a 1.82 acre tract lying in the name of Bellefontaine Development Company.

THENCE, South, with said west line, a distance of 72.89 feet, to a point in the center-line of Blue Jacket Creek.

THENCE, with said center-line of the creek, S 88°-08' W, a distance of 248.83 feet to the point of beginning. Containing 0.439 acre.

Surveyed by

Clayton M. Lee

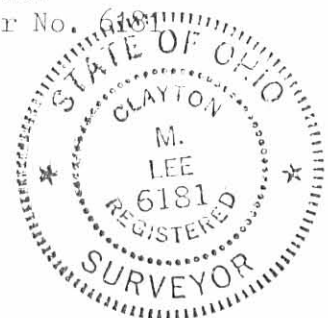
Clayton M. Lee

Reg. Surveyor No. 6181
5-3-77

Acreage Breakdown

0.248	Out of 0.30 acre	} 0.439
0.180	Out of 0.39 acre	
0.025	Out of 0.67 acre	
0.050	Within street dedication	
0.503	Total	

INDEXED ON MAP
6972 1D-1



Lee Surveying and Mapping Co.



Farm Surveys • Lot Surveys • Descriptions • Subdivisions

855 EAST SANDUSKY AVENUE
BELLEFONTAINE, OHIO 43311

CLAYTON M. LEE, P. S.
(513) 593 5780

JOHN A. ROESHMAN et al. PROPERTY SPLIT

(Colonel Sanders Location)

Lying in Section 34, T-4, R-14 and being in the City of Bellefontaine, Lake Township, Logan County, Ohio and being the north part of that 1.05 acres described and deeded in Volume 335, Page 542 of the Logan County Records of Deeds and more particularly described as follows:

Beginning at a nail found on the bridge where the east property line of South Main Street intersects the center-line of Blue Jacket Creek. Said point lying 30 feet east of the center-line of South Main Street.

THENCE, with the said east property line of South Main Street, North, 81.00 feet to The True Point of Beginning.

THENCE, continuing with the east property line, North, 86.02 feet to the northwest corner of the 1.05 acres.

THENCE, East, along the north line of said 1.05 acres, a distance of 248.70 feet to an iron pipe found on the west line of a 1.82 acre tract lying in the name of the Bellefontaine Development Company.

THENCE, South, with said west line, a distance of 86.02 feet to an iron rod.

THENCE, West, a distance of 248.70 feet to the point of beginning. Containing 0.491 acres.

Surveyed by Clayton M. Lee
Clayton M. Lee
Reg. Surveyor No. 6181
5-3-77

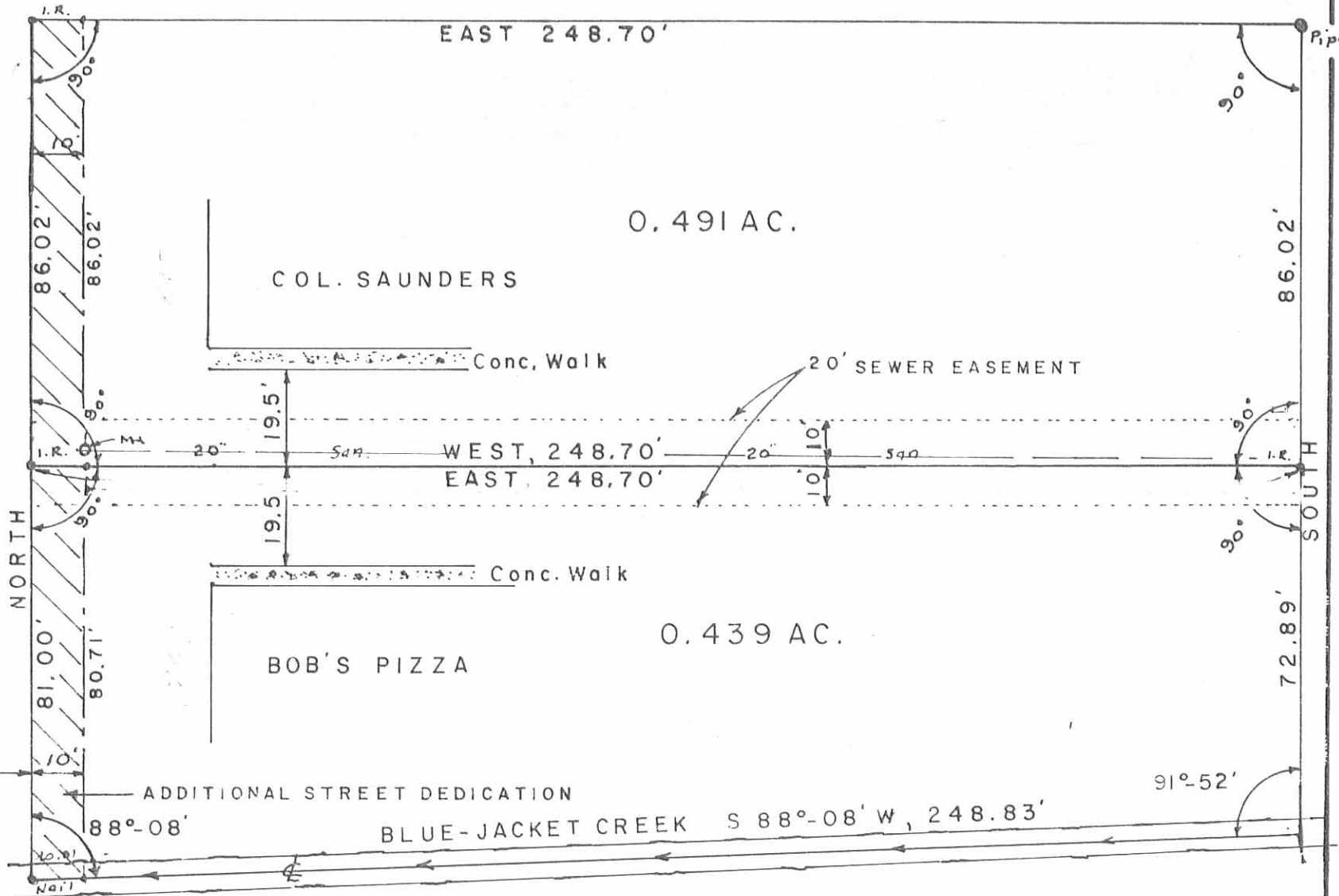
Acreage Breakdown

0.00	Out of 0.30 acre	} 0.491
0.196	Out of 0.39 acre	
0.295	Out of 0.67 acre	
0.056	Within street dedication	
<u>0.547</u>	Total	

INDEXED ON MAP
6972 D2



SOUTH MAIN STREET



SCALE ~ 1" = 30'

INDEXED ON MAP
6972 IP

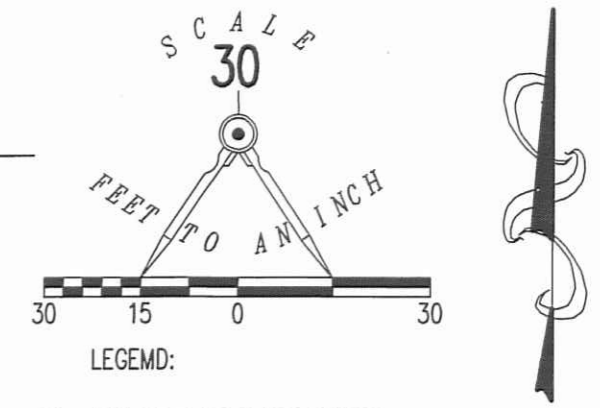
SURVEY OF PROPERTY DIVISION
OF 1.05 AC. (VOL. 335, PG. 542)
SEC. 34, T-4, R-14
IN THE CITY OF BELLEFONTAINE,
LAKE TWP., LOGAN COUNTY, OHIO.

Lee Surveying & Mapping Co.
855 E. Sandusky Ave.
BELLEFONTAINE, OHIO 43311
(513) 593-5780

SURVEYED BY:
Clayton M. Lee
Clayton M. Lee, Reg. Surveyor 6181
5-3-77

3-13-14

APPROVED



- LEGEND:
- ⊙ 3/4 INCH IRON ROD FOUND
 - MAG NAIL SET

DARREN L. WHITAKER
1.388 ACRES
O.R. 826, PG. 741

**RETRACEMENT SURVEY OF THE
NORTH LINE OF THE
DANNY LEE LEVAN AND
LORETTA A. LEVAN
0.421 ACRE TRACT
909 S. MAIN STREET
OFFICIAL RECORD 081, PAGE 704
SECTION 34, TOWN 4, RANGE 14
CITY OF BELLEFONTAINE
LAKE TOWNSHIP
LOGAN COUNTY, OHIO**

SURVEYED BY:

William K. Bruce
WILLIAM K. BRUCE
PROFESSIONAL SURVEYOR 7437
MARCH 7, 2014



COPYRIGHT 2014 BY:
LEE SURVEYING & MAPPING CO., INC.
117 North Madriver Street
BELLEFONTAINE, OHIO 43311
(937) 593-7335
WWW.LSMINC.US
surveys@lsminc.us

KSS D0314 2600314A L-260-3

2 WORKING DAYS
BEFORE YOU DIG

CALL TOLL FREE **800-362-2764**
OHIO UTILITIES PROTECTION SERVICE.



INDEXED ON MAP
G972 2P