

Lee Surveying and Mapping Co.



Farm Surveys • Lot Surveys • Topography • Subdivisions • Construction Layout

855 EAST SANDUSKY AVENUE
BELLEFONTAINE, OHIO 43311

(513) 593-5780

CLAYTON M. LEE, P.S.
JEFFREY I. LEE, P.S.

LOT 4371

Being all of City Lot No. 4371 as platted and shown in platted Westerman Allotment (Flat Book 6-F, Page 98) EXCEPT the south 5 (Five) feet. Running the entire distance between Lots 4370 and 4371.

Prepared by:



Clayton M. Lee

Clayton M. Lee
Reg. Surveyor No. 6181
3-25-78

LOT 4370

Being all of City Lot No. 4370 as platted and shown in platted Westerman Allotment (Flat Book 6-F, Page 98) ALONG WITH the south 5 (Five) feet of Lot No. 4371 running the entire distance between Lots 4370 and 4371.

Prepared by:



Clayton M. Lee

Clayton M. Lee
Reg. Surveyor No. 6181
3-25-78

DEC 3-25 78

APPROVED

BELLEFONTAINE CITY PLANNING COMMISSION

THE 29th DAY OF March, 1978

Michael M. Lee
CHAIRMAN PLANNING COMMISSION

By: City Engineer

(6955) ID

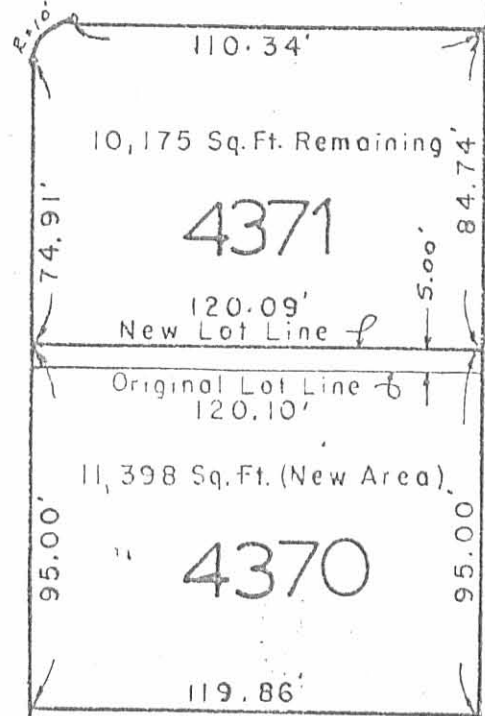
INDEXED ON MAP



SCALE ~ 1" = 50'

RESERVOIR ROAD

HEATHER HILL DRIVE



NEW LOT LINE LOCATION
 5.00 FT. NORTH OF PLATTED
 LOT LINE BETWEEN LOTS
 4370 & 4371, WESTERMAN
 ALLOTMENT, BELLEFONTAINE,
 LOGAN COUNTY, OHIO.



Clayton M. Lee
 Clayton M. Lee
 Reg. Surveyor 6181

6955 IP

INDEXED ON MAP

Description checked
 Logan Co. Engineer
 on Dec 3-28-78

APPROVED

BELLEFONTAINE CITY PLANNING COMM.
 THE 28 DAY OF *March* 1978
Michael M. Green
 CHAIRMAN, PLANNING COMMISSION
 By: City Engineer

Lee Surveying & Mapping Co.
 855 E. Sandusky Ave.
 BELLEFONTAINE, OHIO 43311
 (513) 593-5780