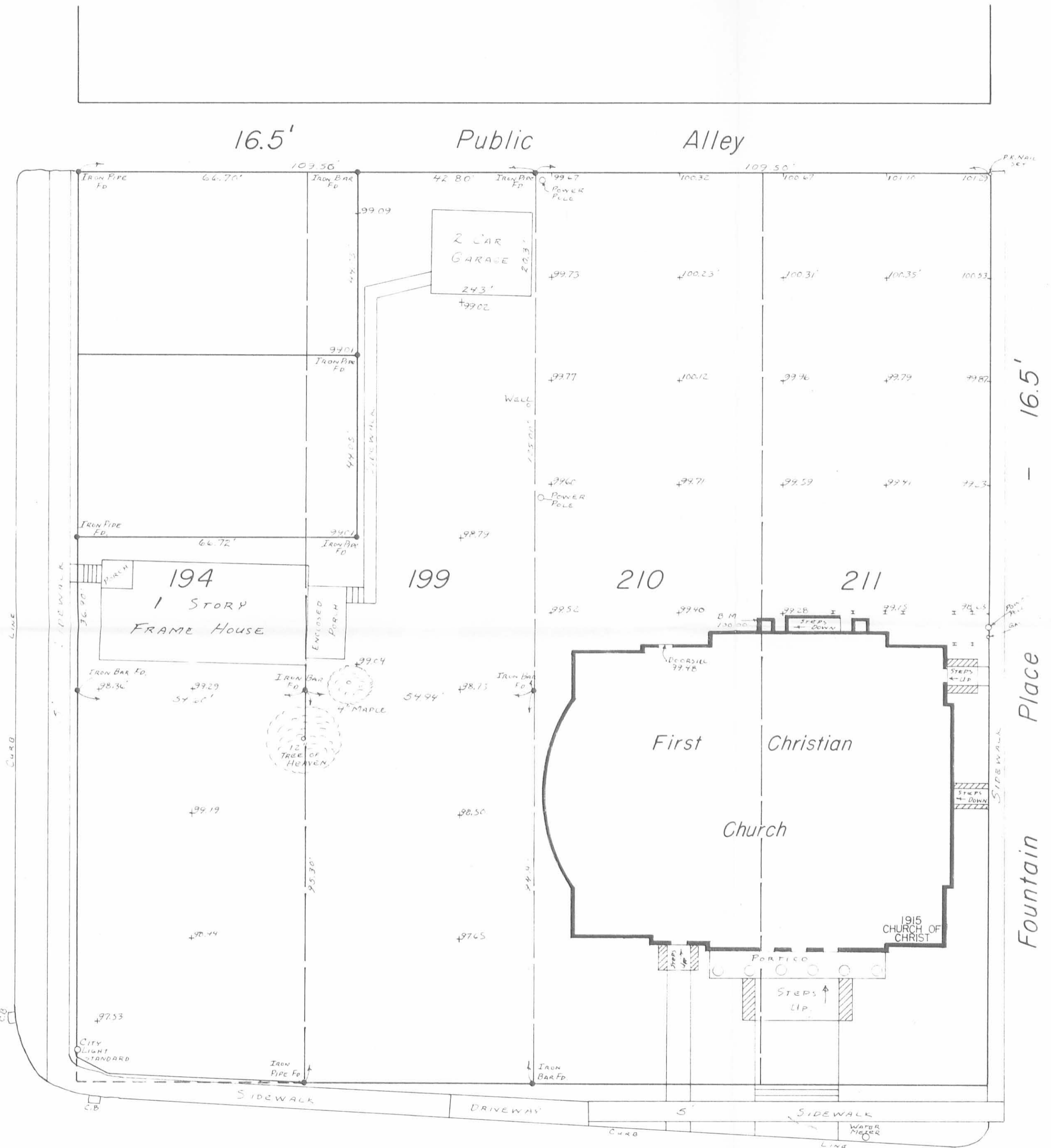


N. Madriver St. - 60'

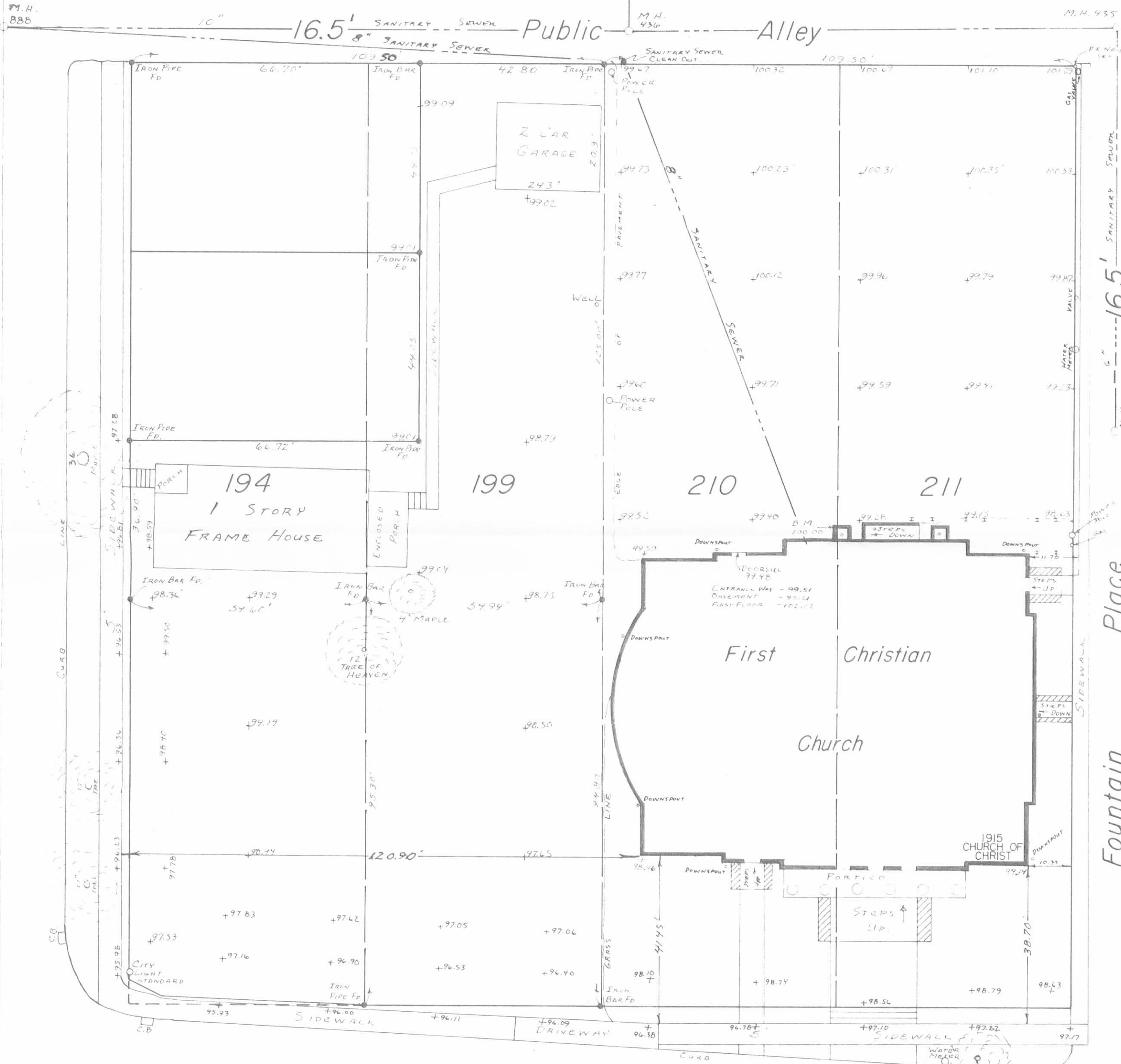


6909 TP

INDEXED ON MAP

First Christian Church Survey		City of Bellefontaine, Ohio	
SCALE 1" = 20'	APPROVED BY	DRAWN BY DEG	
DATE 11-1983		REVISED	
Surveyed by: Daniel E. Gilbert, P.S. Reg. Sur. No. 5402		DRAWING NUMBER	

N. Madriver St. - 60'



PARK BROWN

Fountain Place

E. Sandusky Ave. - 60'

First Christian Church Survey
City of Bellefontaine, Ohio

SCALE 1" = 20'	APPROVED BY	DRAWN BY DEG
DATE 11-1983		REVISED 7-14-1984

INDEXED ON MAP
6905 2P

Surveyed by: Daniel E. Gilbert, P.S. Reg. Sur. No. 5402	DRAWING NUMBER
--	----------------

Monument Box

54.50	102
54.00	<u>97.50</u>
52.00	
<u>51</u>	199.50
212.00	

97.50 ; 199.50 ; X : 212.

97.5
<u>212</u>
1950
975.
<u>1750</u>
199.5 20670.0
<u>1995</u>
7200
<u>5985</u>
12150
<u>11970</u>
1800

102 ; 199.5 ; X : 212

212
<u>102</u>
424
<u>212</u>
199.5 2162.4
<u>1995</u>
16740
<u>15960</u>
7700
<u>5985</u>
17150

CHURCH OF CHRIST

5/11, 1915

Wm. LOCKHART, Ch. Cr.
REV. HARRISON FLAG
Fleming, Ch. Cr.

6905

CHURCH OF CHRIST

PLAT DIST. on SANDUSKY

LOTS = $8 \times 55 = 440$

ALLEY = = 16.5

 $\frac{1}{2}$ MAD RIVER = 30. $\frac{1}{2}$ PARK = 15

501.5

Ch. of Christ

Lot 210

" 211 Except 85' off N. end.

C.A.I. C.M.R.

Sandusky 498.6 O.K. 498.6

Mad 503.0 503.0

Brown 504.95 Meas. 504.80

Park 501.95 501.95

S. + Mad River $89^{\circ} 50'$ M. + Brown $90^{\circ} 02'$ B. + Brown $89^{\circ} 50'$ S. + Park $90^{\circ} 18'$

On Sandusky

Plat = 501.5 Meas 498.6

Shortage = 2.9 $2.9 \div 8 = .362$ W. LINE Lot 210 = $30 + 109.28 = 139.28$ E. " " 211 = $139.28 + 109.28 =$ $54.64 \times 2 = 109.28$

248.56

On Brown.

Plat = 501.5 Meas. 499.80

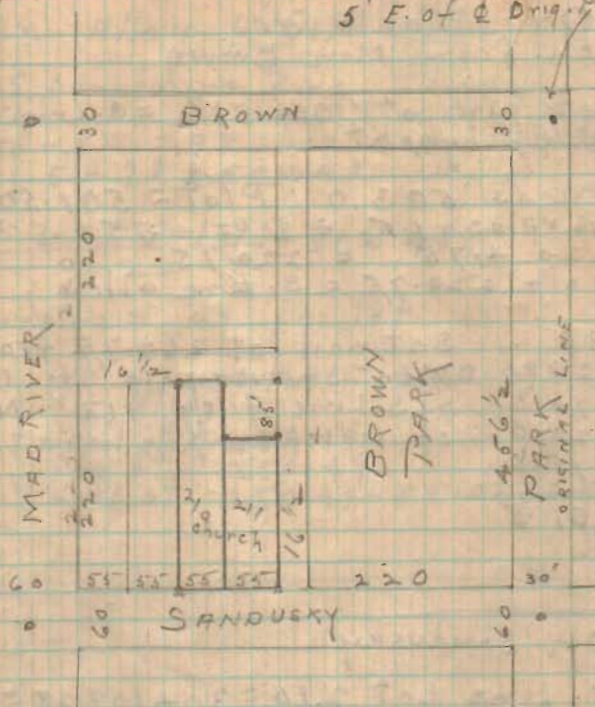
Shortage = $1.7 \div 8 = .21$

Meas. E. from C. Mad River

 $30 + 54.79 + 54.79 = 139.58$ $139.58 + 109.58 = 249.16$

5/11 1915

5' E. of C. Driv. Park St



On Mad River
ch. from Man Brown

Set pin at $2 + 51\frac{1}{2} =$ S. Line
Alley by plat.

Meas 503.0 Plat = 501.50

Surplus $1.5 \div 2 = .75$

$220 + .75 = 220.75$

$30 + 220.75 =$ S. Line alley

30 Set nail at 260.75 from

220 Man Sandusky 10' N.

16.5 of S. Line Alley 117' N.

220.0 of kid of Manhole lid.

15.0

501.5

On Sandusky

W. Line Lot 210 = $30 + 109.28 =$
139.28

E. Line 210 = $139.28 + 54.64 = 193.92$

E. Line 211 = $193.92 + 54.64 = 248.56$

On Alley 6' E. of E Line 211

45 Surplus on Park
1.50 " " Mad River
 $1.50 - .52 = .98$ surplus on Alley line
 $501.5 + .98 = 502.48$

$$\frac{503.0 + 501.95}{2} = 502.48$$

Surplus = .49 per lot

$30 + 220 + .49 = 250.49 =$
S. Line Alley

Set nail at 260.49

" pin at 250.49

" nail at $250.49 - 85.0 = 165.49$

6905

On Alley N.
 On Sandusky 498.6
 " Brown 499.50
 998.40
 On 1/2 dist: 499.20

Shortage $501.50 - 499.20 =$
 2.30
 $8 | 2.30$
 .287 per Lot (Shortage)

From MAD River
 $30 + 54.713 + 54.713 =$

139.426 140.
 .574
 139.426 to

W. Line Lot 210

139.426
 54.713
 194.139 = E. Line Lot 210
 54.713
 248.852 = Alley Line (West)

60.713 to 6' offset line in
 alley.

Set stakes on W. Line Lot 210
 by 8" offset line
 N.W. L Lot 15 14" N. of Violet's
 Barn and 8" W. of E. face of barn
 and 6" W. of N.E. L of foundation

AT N.E. Lot 211
 scratched on E. end of cement walk.
 Scratch is $4\frac{3}{4}$ " W. of E. Line
 and is $13\frac{1}{4}$ " N. of S. side of walk.
 Mrs. Clark's Walk.

Lot width on Sandusky = 54.69
 " " " Alley = 54.71

.07
 85
 260
 Lot width at S. side Clark =
 $54.69 = 54.8\frac{1}{4}$ "

Stake set at 54.75

Set stake N.E. L 210.
 also \square at Clark's S.W. L

69105