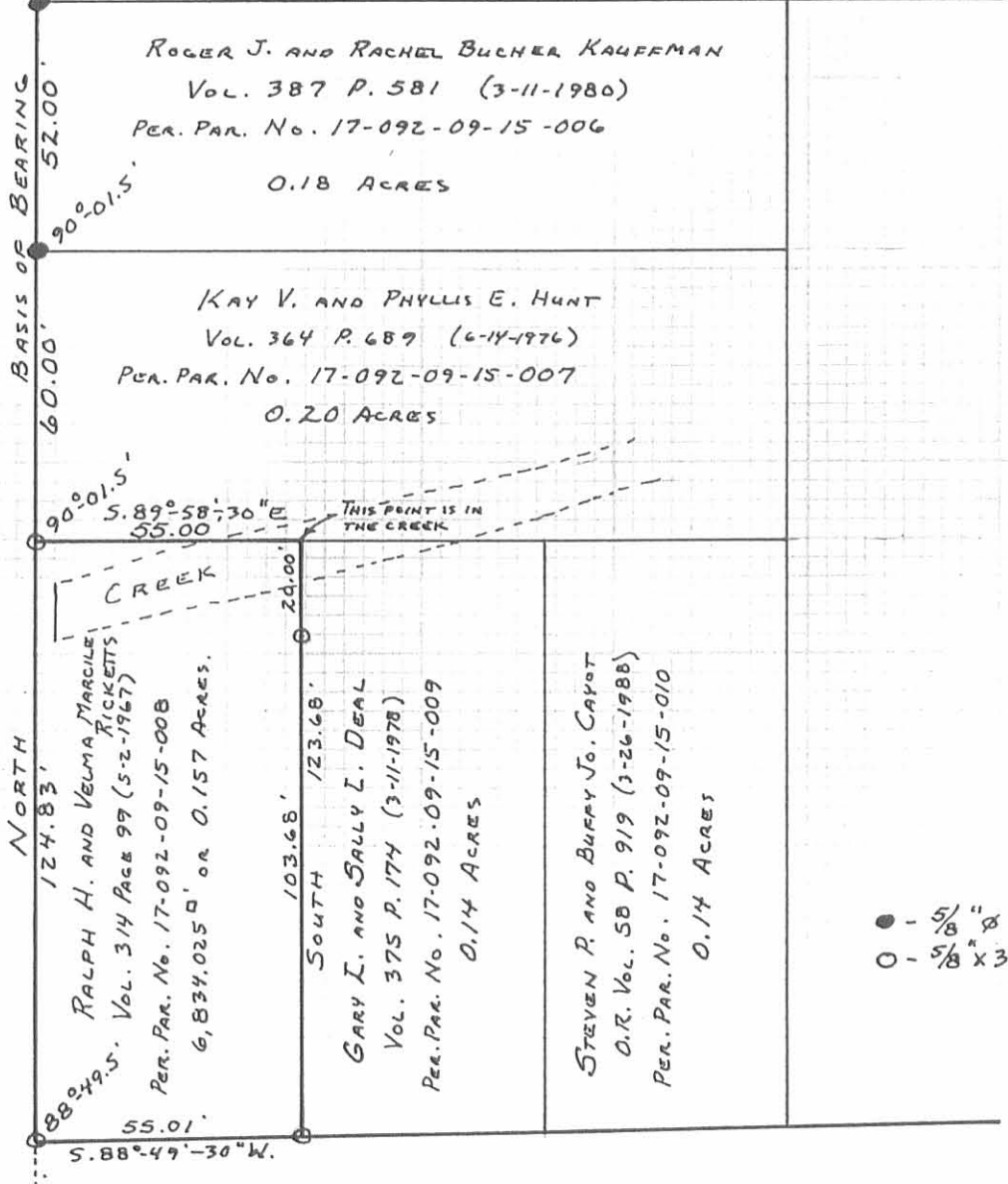


MAP ROOM

N. PARK ST. - 40'



- - 5/8" Ø REBARS FD.
- - 5/8" X 30" REBARS SET.

E. SANDUSKY AVE.

60'

INDEXED ON MAP  
6870 IP

*Daniel E. Gilbert*  
 DANIEL E. GILBERT, P.S.  
 REG. SUR. No. 5402  
 400 N. PARK ST.  
 BELLEFONTAINE, OHIO  
 43311

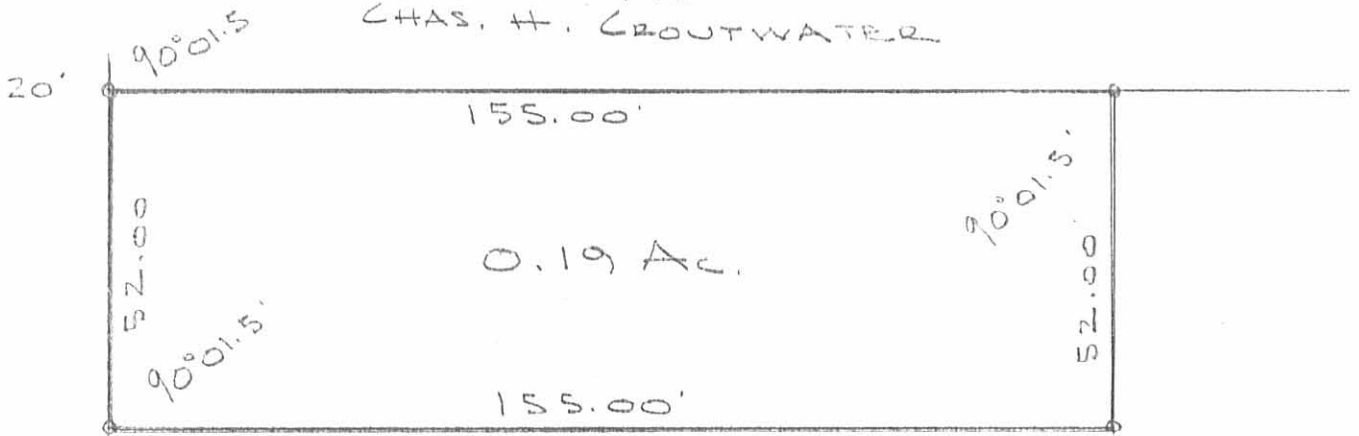


RICKETTS SURVEY  
 SECTION 35 T.4 R.14 B.M.R.S.  
 CITY OF BELLEFONTAINE  
 LAKE TOWNSHIP  
 LOGAN COUNTY, OHIO  
 MAY 17, 1988

SCALE: 1" = 40'

088-025

VOL 382/70  
CHAS. H. CROUTWATER



KAUFFMAN SURVEY  
 SEC. 35 T-4 R-14  
 BELLEFONTAINE, OHIO  
 SEPTEMBER 13, 1980  
 SCALE 1" = 30'  
 O = 5/8"  $\phi$  BAR SET

NOTE: EAST-WEST LINES MADE  
 PARALLEL TO BROWN AVE.

REF: DEED VOL PG.

115	495
115	523
64	54
100	59

DAN L. DOOSON  
 REG. SURVEYOR 4270  
 BELLEFONTAINE, OHIO  
 BK 21/69

PARK STREET 40'

184.83

30.01'

88°49.5'

320.51

Copper  
 Point  
 Found

STONE  
 MON.

25.00'

PK  
 SET

SANDUSKY AVE  
 60'

INDEXED ON MAP  
 6870 2P

KAUFFMAN SURVEY  
BELLEFONTAINE

- A = Stone w/mon Box Found
- B = " " " "
- C = Copper point in brick Found
- D = 1"  $\phi$  Bar w/mon Box Found
- E = " " " "
- F = Copper point in brick Found
- G = 1"  $\phi$  BAR FOUND
- H = 1"  $\phi$  HEAD BOLT FOUND "OK"
- I = " " " " "OK"
- J = 1/2"  $\phi$  BAR FOUND (NOT ON LOT COR.)
- K = 5/8"  $\phi$  BAR SET 1.0' N. OF  
3/4" PIPE - SEE "K" SKIMMERS SURVEY
- L = INDEX NO. 737
- L = 5/8"  $\phi$  BAR SET
- M = " " "
- N = " " " 0.8' N.  $\phi$  2.8'  
W. OF 3/4" PIPE FOUND
- O = 1" PIPE FOUND
- P = 1"  $\phi$  BAR SET
- Q = 5/8"  $\phi$  BAR SET

K to  $\phi$  SANDUSKY =  $236.83 + 30.01$   
= 266.84

INDEXED ON MAP  
6870

Dodson  
Dill

8/25/80  
9/13/80

69

