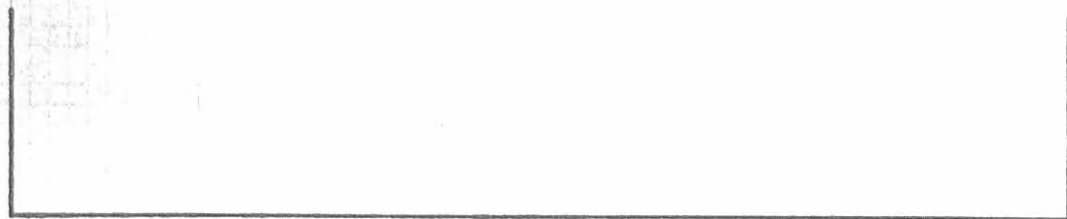
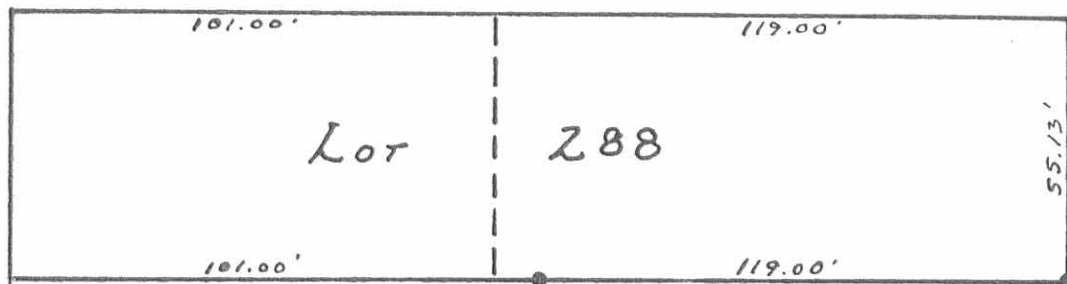


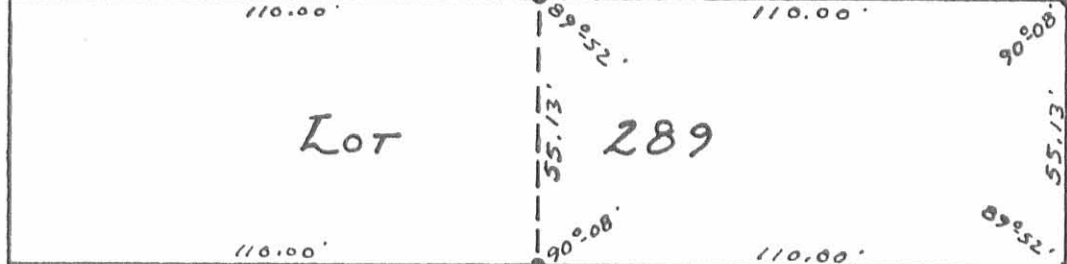
ELM ST. - 20.5'



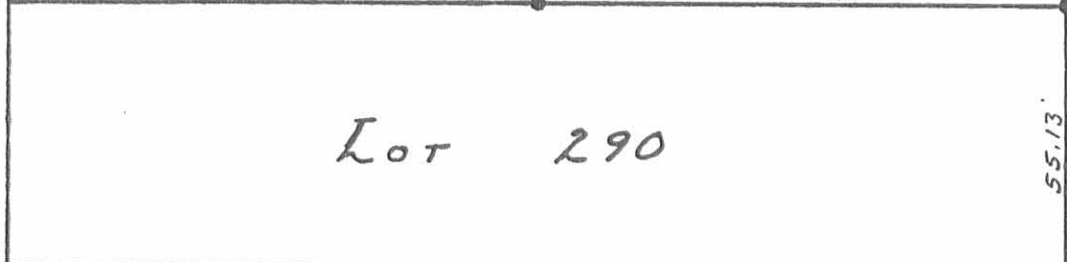
16.5' ALLEY



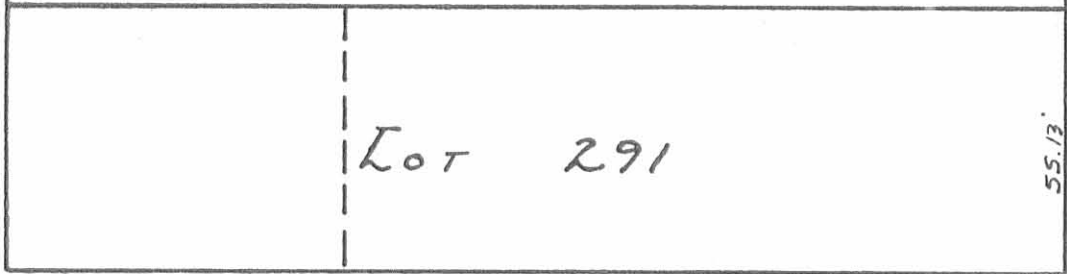
Lot 288



Lot 289

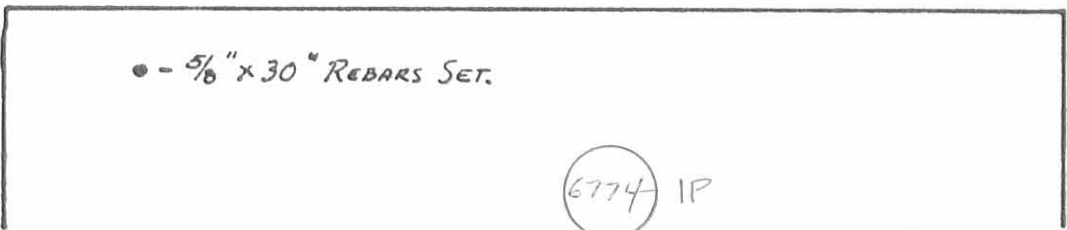


Lot 290



Lot 291

15.0' ALLEY



• - 5/8" x 30" REBARS SET.

6774 IP

INDEXED ON MAP

S. DETROIT ST. - 60'



SURVEYED AND PLATED BY:  
DANIEL E. GILBERT, P.S.  
REG SUR. NO. 5402  
1041 N. MAIN ST.  
BELLEFONTAINE, OHIO 43311

SURVEY OF EAST PART OF  
Lot 289  
CITY OF BELLEFONTAINE  
LAKE TOWNSHIP  
LOGAN COUNTY, OHIO  
OCTOBER 2, 1982  
SCALE: 1" = 40'