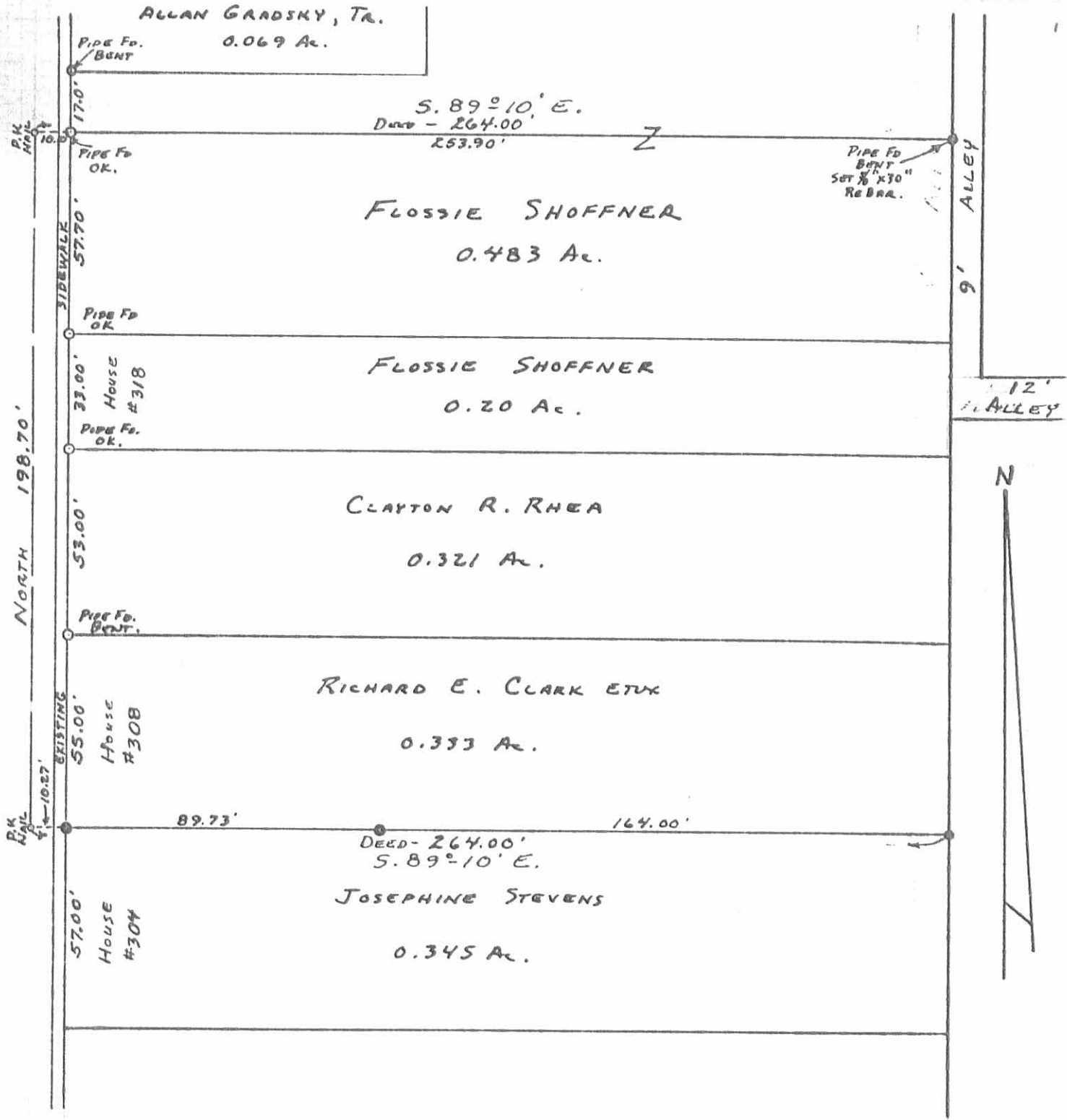


CLAGG ST. - 30'



● - 5/8" x 30" REBARS SET.

(6773) IP

INDEXED ON MAP

SURVEY OF LINE BETWEEN  
CLARK & STEVENS  
SECTION 35 T. 4 R. 14  
CITY OF BELLEFONTAINE  
LAKE TOWNSHIP  
LOGAN COUNTY, OHIO  
SEPTEMBER 18, 1982

SURVEYED AND PLATTED BY:  
DANIEL E. GILBERT, R.S.  
REG. SUR. No. 540Z  
1041 N. MAIN ST.  
BELLEFONTAINE, OHIO 43311

SCALE: 1" = 40'