

REC'D 3-23-06 smj ok

Lee Surveying and Mapping Co., Inc.

Land Surveys • Topography • Subdivisions • Construction Layout

117 N. Madriver St.
Bellefontaine OH 43311



Phone: (937) 593-7335
Fax: (937) 593-7444

1975 - 2005 - 30 YEARS OF EXCELLENCE

ROBINSON INVESTMENTS, LTD.

1.388 ACRES

Lying in Section 34, Town 4, Range 14, Lake Township, Logan County, Ohio.

Being part of the Robinson Investments, LTD. 5.571 acre tract as deeded and described in Official Record 805, Page 371 of the Logan County Records of Deeds and being more particularly described as follow:

Beginning at a 5/8 inch iron rod set at the southwest corner of the Danny Lee LeVan and Loretta A. LeVan 0.421 acre tract (O.R. 81, Pg. 704).

THENCE, with the west line of the said 0.421 acre tract and the west line of the Darren L. Whitaker and Johni L. Whitaker 0.471 acre tract (O.R. 777, Pg. 277), N 5°-00'-52"E, a distance of 163.35 feet to a 1 inch iron pipe found on the northeast corner of the 0.471 acre tract.

THENCE, S 84°-59'-08"E, a distance of 447.94 feet to a 5/8 inch iron rod set.

THENCE, with the County Commissioners of Logan County, Ohio 37.0 acre tract (Vol. 152, Pg. 405), the following three courses:

S 42°-04'-22"W, a distance of 122.72 feet to a point in Bluejacket Creek.

S 66°-27'-39"W, a distance of 58.70 feet to a point in Bluejacket Creek.

S 25°-41'-39"W, a distance of 30.66 feet to a 5/8 inch iron rod found.

THENCE, with the north line of the City of Bellefontaine 3.19 acre tract (Vol. 129, Pg. 220), N 86°-34'-47"W, a distance of 311.72 feet to the point of beginning, passing a 1 inch iron bar found at 11.82 feet.

Containing 1.388 acres.

The basis for bearings is the north line of City of Bellefontaine 3.19 acre tract being N 86°-34'-47"W, and all other bearings are from angles and distances measured in a field survey by Lee Surveying and Mapping Co., Inc. on March 17, 2006.



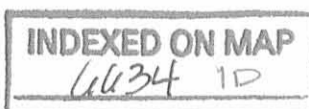
ORIGINAL STAMP IN GREEN

Description prepared by:

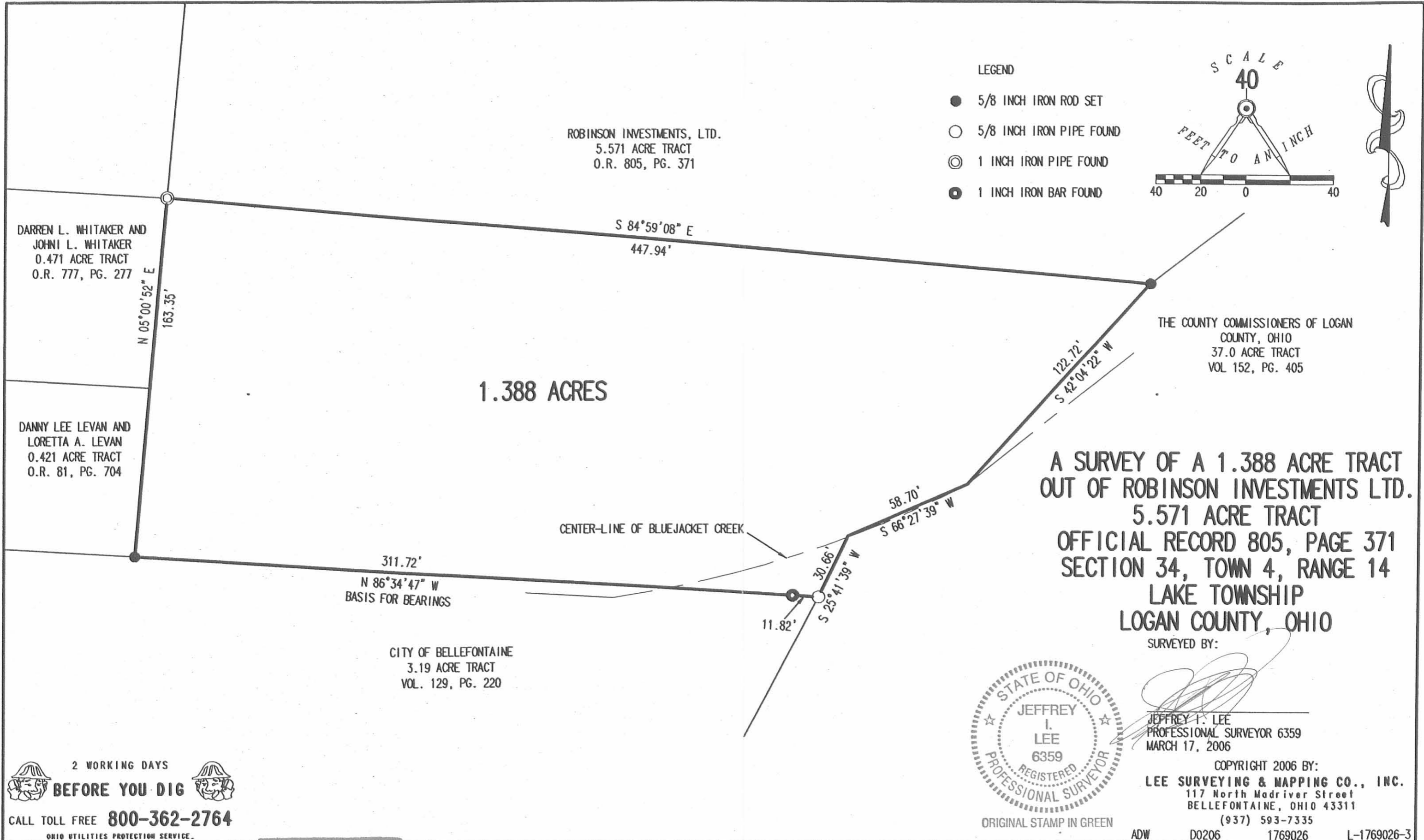
A handwritten signature in black ink, appearing to read 'Jeffrey I. Lee', written over a horizontal line.

Jeffrey I. Lee
Professional Surveyor 6359
March 20, 2006

L-1769026



REC'D 3-23-06 SMM/OLC



DARREN L. WHITAKER AND
JOHNI L. WHITAKER
0.471 ACRE TRACT
O.R. 777, PG. 277

DANNY LEE LEVAN AND
LORETTA A. LEVAN
0.421 ACRE TRACT
O.R. 81, PG. 704

ROBINSON INVESTMENTS, LTD.
5.571 ACRE TRACT
O.R. 805, PG. 371

1.388 ACRES

311.72'
N 86°34'47" W
BASIS FOR BEARINGS

CITY OF BELLEFONTAINE
3.19 ACRE TRACT
VOL. 129, PG. 220

S 84°59'08" E
447.94'

CENTER-LINE OF BLUEJACKET CREEK

11.82'
S 25°41'39" W
30.66'

58.70'
S 66°27'39" W

122.72'
S 42°04'22" W

THE COUNTY COMMISSIONERS OF LOGAN
COUNTY, OHIO
37.0 ACRE TRACT
VOL 152, PG. 405

**A SURVEY OF A 1.388 ACRE TRACT
OUT OF ROBINSON INVESTMENTS LTD.
5.571 ACRE TRACT
OFFICIAL RECORD 805, PAGE 371
SECTION 34, TOWN 4, RANGE 14
LAKE TOWNSHIP
LOGAN COUNTY, OHIO**

SURVEYED BY:

[Signature]
JEFFREY I. LEE
PROFESSIONAL SURVEYOR 6359
MARCH 17, 2006



COPYRIGHT 2006 BY:
LEE SURVEYING & MAPPING CO., INC.
117 North Madriver Street
BELLEFONTAINE, OHIO 43311
(937) 593-7335

2 WORKING DAYS
BEFORE YOU DIG
CALL TOLL FREE **800-362-2764**
OHIO UTILITIES PROTECTION SERVICE.

INDEXED ON MAP
6634 IP

Recieved 5-19-87

OK 5-20-87 C.R

LESLIE H. GEESLIN
REGISTERED SURVEYOR NO. 5248
P O. BOX 274
RUSHSVLVANIA, OHIO 43347

TELEPHONE: (513) 468-2793

ZIESSLER SURVEY

May, 1987

The following described real estate situated in the State of Ohio, County of Logan, Township of Lake, being part of the southeast quarter of Section 34, Town 4, Range 14, B.M.R.S. and more particularly described as follows:

Beginning at a 0.625 inch iron bar in Blue Jacket Creek at the southeast corner of John J. Ziessler's 0.421 acre tract as described in D.B. Vol. 398 Page 500.

Thence with the east line of said Ziessler, T.P. Whitaker's 0.471 acre tract as described in D.B. Vol. 377 Page 849 and R.L. Snapp's 0.67 acre tract as described in D.B. Vol. 394 page 449 N. 4° 45' 46" E. (This bearing is a magnetic bearing and all other bearings are from angles and distances measured in this field survey) 248.53 feet to a 0.625 inch iron bar in the corporation line of the City of Bellefontaine.

Thence with said corporation line S. 85° 14' 53" E. 512.10 feet to a 0.625 inch iron bar in the west line of Hamilton Street.

Thence with said street projected S. 4° 34' 44" W. 27.63 feet to a 1 inch iron bar in Blue Jacket Creek on the west side of the Logan County Fairground.

Thence with said Fairground the following four courses: S. 51° 23' W. 87.80 feet, S. 42° 16' W. 121.80 feet, S. 66° 25' W. 58.70

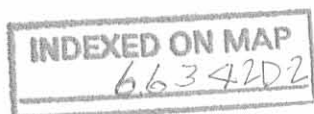
INDEXED ON MAP
66342D-1

feet and S. 25° 39' W. 30.66 feet to an ~~iron bar~~ ^{STONE} at the northeast corner of the City of Bellefontaine's 1.7 acre tract described in D.B. Vol. 129 Page 220.

Thence with the north line of said 1.7 acre tract in Blue Jacket Creek N. 86° 37' 28" W. 311.72 feet to the place of beginning.

Containing 2.360 acres more or less.

The above described 2.360 acre tract being on the south side of The Bellefontaine Development Company's 7.75 acre tract as described in D.B. Vol. 138 Page 254.



Leslie H. Geeslin
LESLIE H. GEESLIN
RUSHSVLYANIA, OHIO

R.L. SNAPP
DB VOL 394 PG 449
0.67 AC

T.P. WHITAKER
0.471 AC.
DB VOL 377 PG 849

JOHN J. ZIESSLER
0.421 AC.
DB VOL 398 PG 500

CORPORATION LINE CITY OF BELLEFONTAINE
5.85° 14' 53" E. 512.10'

2.360 AC.

LOGAN COUNTY COMMISSIONERS
33.07 AC.
FAIRGROUND

CITY OF BELLEFONTAINE
1.7 AC.
DB VOL 129 PG 220

LEGEND:
A=1" IRON BAR FD
B=3/4" IRON BAR FD
C=1" PIPE FOUND
D=5/8" IRON BAR SET
E=STONE FD IN ROOT OF
12" ELM

SURVEY OF 2.360 AC. TRACT IN SECTION 34,
TOWN 4, RANGE 14, B.M.R.S., LAKE TOWNSHIP,
LOGAN COUNTY, OHIO.
MAY, 1987
SCALE: 1"=40'

INDEXED ON MAP
66342P



Leslie H. Geeslin
LESLIE H. GEESLIN
RUSHSVLVANIA, OHIO



Beliefontaine Development Co.
Property
Tract One

The following described real estate situated in the City of Bellefontaine, Township of Lake, County of Logan, State of Ohio and being a part of Section 34, T.4 R.14, B.M.R.S. and being more particularly described as follows:

Beginning at an iron bar in the west line of Hamilton Street at the southeast corner to Joseph F. Brodbeck's present 0.35 Acre tract;

Thence with the west line of Hamilton Street, S. $4^{\circ} 36'$ W. 302.50 feet to an iron bar in the center of Blue Jacket Creek, which in the north line of the Logan County Fairgrounds Property, passing through an iron bar at 252.50 feet;

Thence with the center of Blue Jacket Creek the following three courses and distances, S. $51^{\circ} 23'$ W. 87.80 feet, S. $42^{\circ} 16'$ W. 121.80 feet and S. $66^{\circ} 25'$ W. 58.70 feet to an iron bar;

Thence S. $25^{\circ} 29'$ W. 30.30 feet to a stone at the northeast corner to the City of Bellefontaine's property;

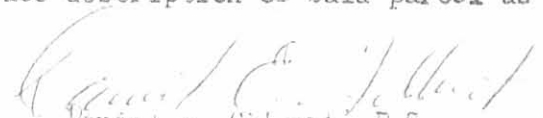
Thence with the north line of the City of Bellefontaine's property and partially in the center of Blue Jacket Creek, N. $86^{\circ} 34'$ W. 309.50 feet to a point at the southeast corner to S. C. Duffrey's present 0.421 Acres tract;

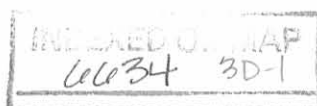
Thence with the east line of Duffrey and T. P. Whitaker, Jr. and Hill and Hamilton tracts, N. $4^{\circ} 36'$ E. 524.00 feet to an iron bar in the south line of Melvin C. Huber's tract;

Thence S. $85^{\circ} 17'$ E. 511.40 feet to the place of beginning, containing 5.571 Acres, more or less.

Of the above, there is 3.226 Acres in the Corporation of Bellefontaine and 2.345 Acres outside of the Corporation.

I hereby certify that this is a true and accurate description of said parcel as prepared by me on June 29, 1981.


Daniel S. Gilbert, P.S.
Reg. Sur. No. 5407
1041 N. Main St.
Bellefontaine, Ohio 43311



Bellefontaine Development Co.
Property
Tract Two

The following described real estate situated in the City of Bellefontaine, Township of Lake, County of Logan, State of Ohio and being a part of Section 34, T. 4, R. 14, B.M.R.S. and being more particularly described as follows:

Beginning at an iron bar in the east line of Hamilton Street at the southwest corner to Richard P. Deal's present 0.202 Acre tract;

Thence with the south line of Deal's tract, S. 85° 17' E. 176.00 feet to an iron bar at the southeast corner to Deal;

Thence with the east line of Deal, N. 4° 36' E. 50.00 feet to an iron bar at the southwest corner to Gordon L. Wilcox's present 0.171 Acre tract;

Thence S. 85° 17' E. 400.00 feet to a point in the west line of Hazel M. Porter's present 0.76 Acre tract and being the southeast corner to a 16.00 foot right of way off the east side of a 0.34 Acre tract in the name of Hazel M. Porter;

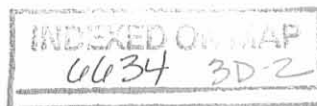
Thence with the west line of Porter's 0.76 Acre tract, S. 4° 36' W. 228.50 feet to an iron pipe at Porter's southwest corner and in the north line of the Logan County Fairgrounds Property;

Thence with the north line of the Logan County Fairgrounds Property, the following three courses and distances, S. 54° 20' W. 129.80 feet to an iron bar, N. 75° 41' W. 271.00 feet to an iron bar and S. 73° 10' W. 226.30 feet to an iron bar in the east line of Hamilton Street;

Thence with the east line of Hamilton Street, N. 4° 36' E. 300.00 feet to the place of beginning, containing 3.679 Acres, more or less.

Also being a 16.00 right of way along the east side of Tract No. Two in the deed to Hazel M. Porter as shown in Deed Volume 264 Page 420 (2-25-60), said right of way being from the south line of Washington Avenue to the north line of this tract.

I hereby certify that this is a true and accurate description of said parcel as prepared by me on June 29, 1981.



Daniel E. Gilbert
Daniel E. Gilbert, P.S.
Reg. Sur. No. 5402

BELLEFONTAINE DEVELOPMENT CO.

PROPERTY

SECTION 34 T4 R.14 B.M.R.S.

CITY OF BELLEFONTAINE

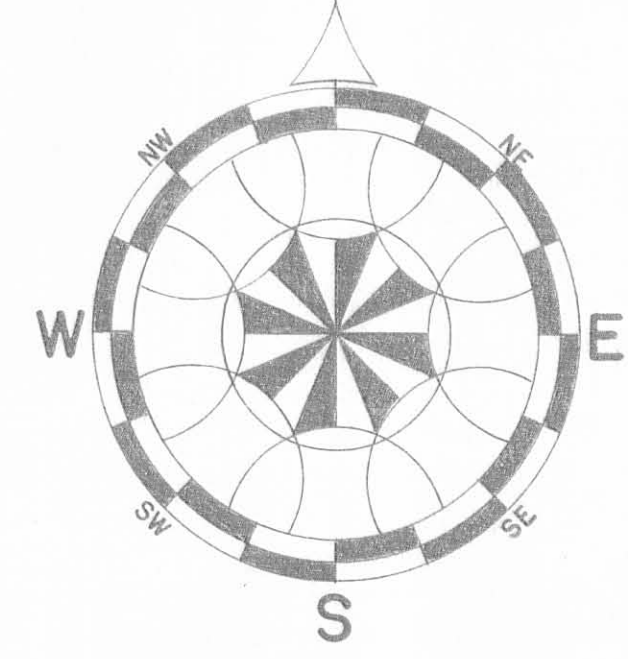
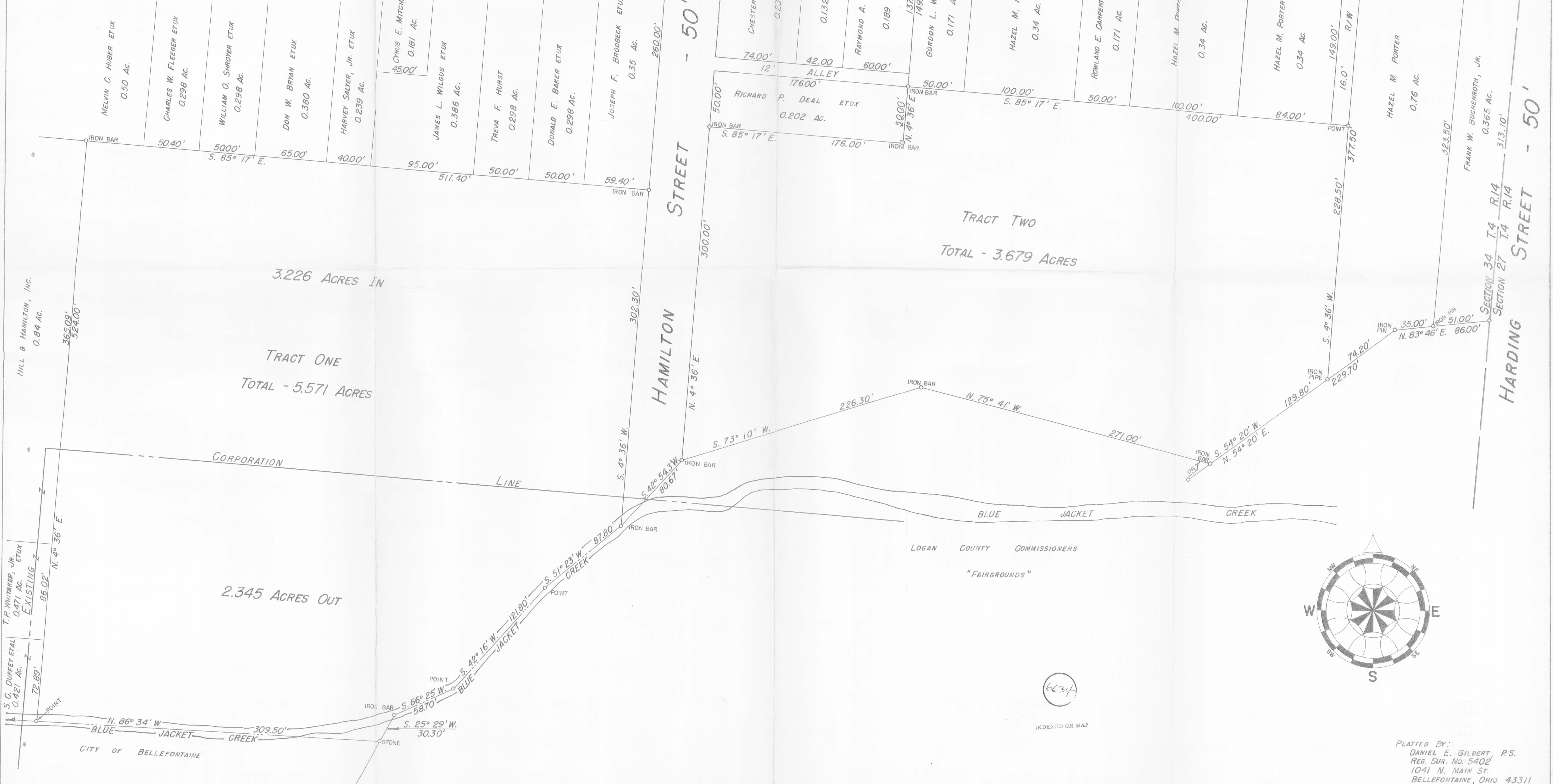
LAKE TOWNSHIP

LOGAN COUNTY, OHIO

JUNE 1981

INDEXED ON MAP
6634-89

SCALE: 1" = 40'



6634

INDEXED ON MAP

PLATTED BY:
DANIEL E. GILBERT, P.S.
REG. SUR. NO. 5402
1041 N. MAIN ST.
BELLEFONTAINE, OHIO 43311



R.L. SNAPP
1.05 ACRES
Vol. 394, Pg. 449

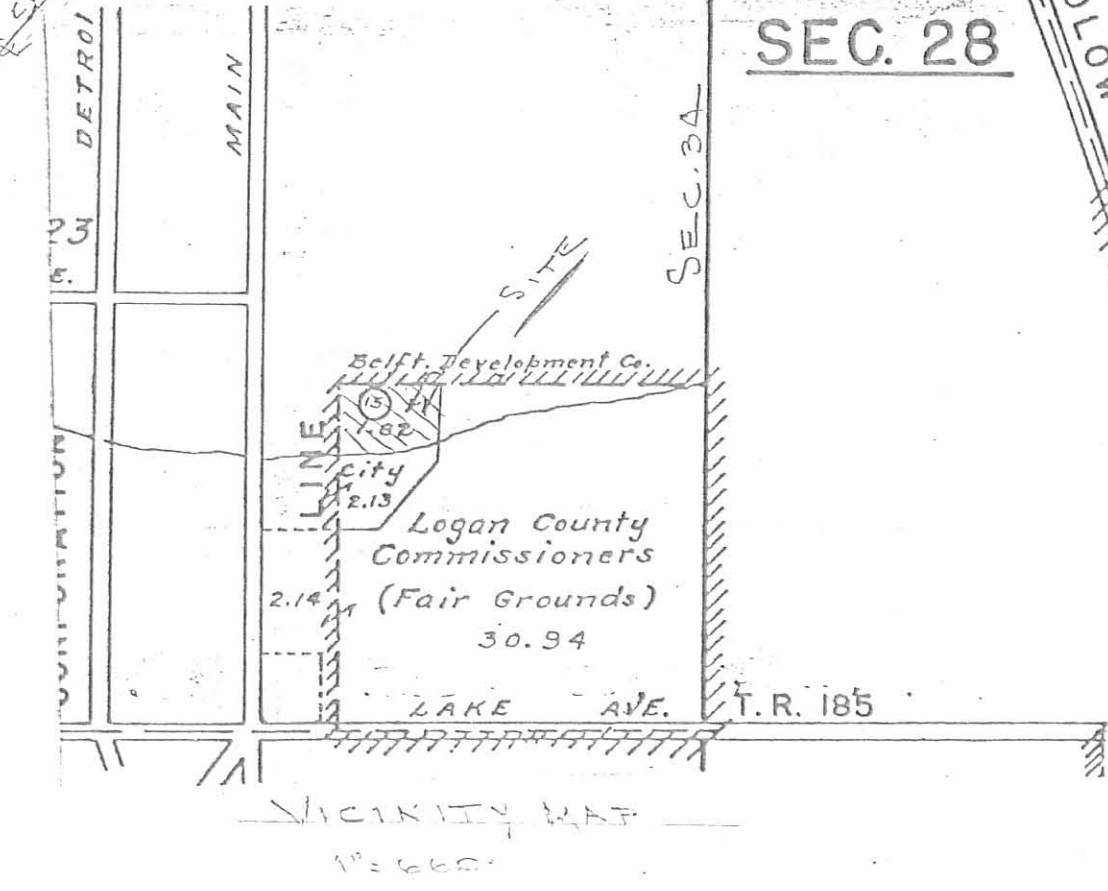
T.P. WHITAKER
0.471 ACRES
Vol. 377, Pg. 849

DAN LEVAN
0.421 ACRES
O.R. 81, Pg. 704

BELLEFONTAINE DEVELOPMENT CO.
2.92 ACRES (PT. OF 5.94 AC.)
Vol. 138, Pg. 254, TRACT 1

BELLEFONTAINE DEVELOPMENT CO.
0.802 ACRES (PT. OF 0.83 AC.)
Vol. 313, Pg. 962

LOGAN COUNTY COMMISSIONERS
235.07 ACRES
Vol. 152, Pg. 405



CITY OF BELLEFONTAINE
1.7 ACRES (PT. OF 3.19 AC.)
Vol. 129, Pg. 220

DESCRIPTION
LYING IN SECTION 34, T-4, R-14, B.M.R.S., LAKE TOWNSHIP, LOGAN COUNTY, OHIO.
BEING ALL THAT LAND IN THE NAME OF BELLEFONTAINE DEVELOPMENT COMPANY LYING SOUTH OF THE PRESENT SOUTH CORPORATION LINE OF THE CITY OF BELLEFONTAINE AS DESCRIBED IN VOLUME 138, PAGE 254 (TRACT 1) AND VOLUME 313, PAGE 962 OF THE LOGAN COUNTY RECORDS OF DEEDS AND BEING MORE PARTICULARLY DESCRIBED AS FOLLOWS:
BEGINNING AT A 5/8" IRON ROD SET IN THE CENTER OF BLUE JACKET CREEK AT THE SOUTHWEST CORNER OF THE SAID BELLEFONTAINE DEVELOPMENT LAND AND BEING ON THE NORTH LINE OF THE 1.7 ACRE TRACT IN THE NAME OF THE CITY OF BELLEFONTAINE (D.V. 129, PAGE 220) AND BEING A DISTANCE OF 12.06 FEET EASTERLY, ALONG SAID NORTH LINE, FROM THE PRESENT CORPORATION LINE.
THENCE, WITH THE EAST LINE OF A TIER OF 3 LOTS (DAN LEVAN, 0.421 ACRE, O.R. 81, PAGE 704; T.P. WHITAKER, 0.471 ACRE, D.V. 377, PAGE 849; R.L. SNAPP, ACRE, D.V. 394, PAGE 449, N 4°-43'-44" E, A DISTANCE OF 248.21 FEET TO A 5/8" IRON ROD FOUND ON THE PRESENT SOUTH CORPORATION LINE OF THE CITY OF BELLEFONTAINE.
THENCE, WITH SAID CORPORATION LINE, S 85°-16'-11" E, A DISTANCE OF 511.90 FEET TO A 5/8" IRON ROD SET ON THE SOUTHWEST CORNER OF TERMINUS OF HAMILTON STREET.
THENCE, WITH THE WEST LINE, EXTENDED, OF HAMILTON STREET, S 4°-34'-44" W, A DISTANCE OF 27.63 FEET TO A 5/8" IRON ROD SET IN THE CENTER OF BLUE JACKET CREEK.
THENCE, WITH THE SOUTH LINE OF THE SAID BELLEFONTAINE DEVELOPMENT LAND, BEING MORE OR LESS WITH THE CENTER OF SAID CREEK, THE FOLLOWING 5 BEARINGS AND DISTANCES:
S 51°-23' W, 87.80 FEET TO A POINT.
S 42°-04'-22" W, 121.70 FEET TO A POINT.
S 66°-27'-39" W, 58.70 FEET TO A POINT.
S 25°-41'-39" W, 30.66 FEET TO A FOUND CORNER STONE.
N 86°-34'-49" W, 311.72 FEET TO THE POINT OF BEGINNING.
CONTAINING 2.359 ACRES.

DESCRIPTION CHECKED. _____



SCALE 1" = 20'

**ANNEXATION OF 2.359 ACRES TO
THE CITY OF BELLEFONTAINE
SECTION 34, T-4, R-14
LAKE TOWNSHIP, LOGAN COUNTY, OHIO**

CITY OFFICERS
PLANNING COMMISSION PRESIDENT _____
MAYOR _____
PRESIDENT OF COUNCIL _____
ORDINANCE No. _____
CITY ENGINEER _____
TOWNSHIP TRUSTEES _____

COUNTY OFFICERS
LOGAN COUNTY ENGINEER _____
LOGAN, UNION, CHAMPAIGN REGIONAL PLANNING COMMISSION _____
LOGAN COUNTY COMMISSIONERS _____

TRANSFERRED THIS _____ DAY OF _____, 19____.
AUDITOR, LOGAN COUNTY, OHIO

RECORDED IN PLAT CABINET _____, SLIDE _____.
RECEIVED FOR RECORD AT _____ O'CLOCK ____ M THIS _____ DAY
OF _____, 19____.

RECORDER, LOGAN COUNTY, OHIO

SURVEYOR'S STATEMENT
I HEREBY STATE THAT THE ABOVE SHOWN PLAT OF 2.359 ACRE ANNEXATION WAS PREPARED BY ME FROM AVAILABLE RECORDS OF DEEDS AND OTHER RECORDS.

CLAYTON M. LEE
PROFESSIONAL SURVEYOR No. 6181
DECEMBER 11, 1989

6634 4P

LEE SURVEYING & MAPPING CO.
143 East Columbus Avenue
BELLEFONTAINE, OHIO 43311
(513) 593-7335

DELLEFONTAINE DEV. CO. SURVEY
 DELLEFONTAINE

- A = Non. E. Hamilton & Washington
- B = 1" pipe found N.E. Cor. Dev. Co.
- C = 3/4" ϕ Bar found
- D = 5/8" ϕ Bar Set

INDEXED ON MAP
 6634

Dodson
 Artie

11/18/67
 35°
 Windy

24

