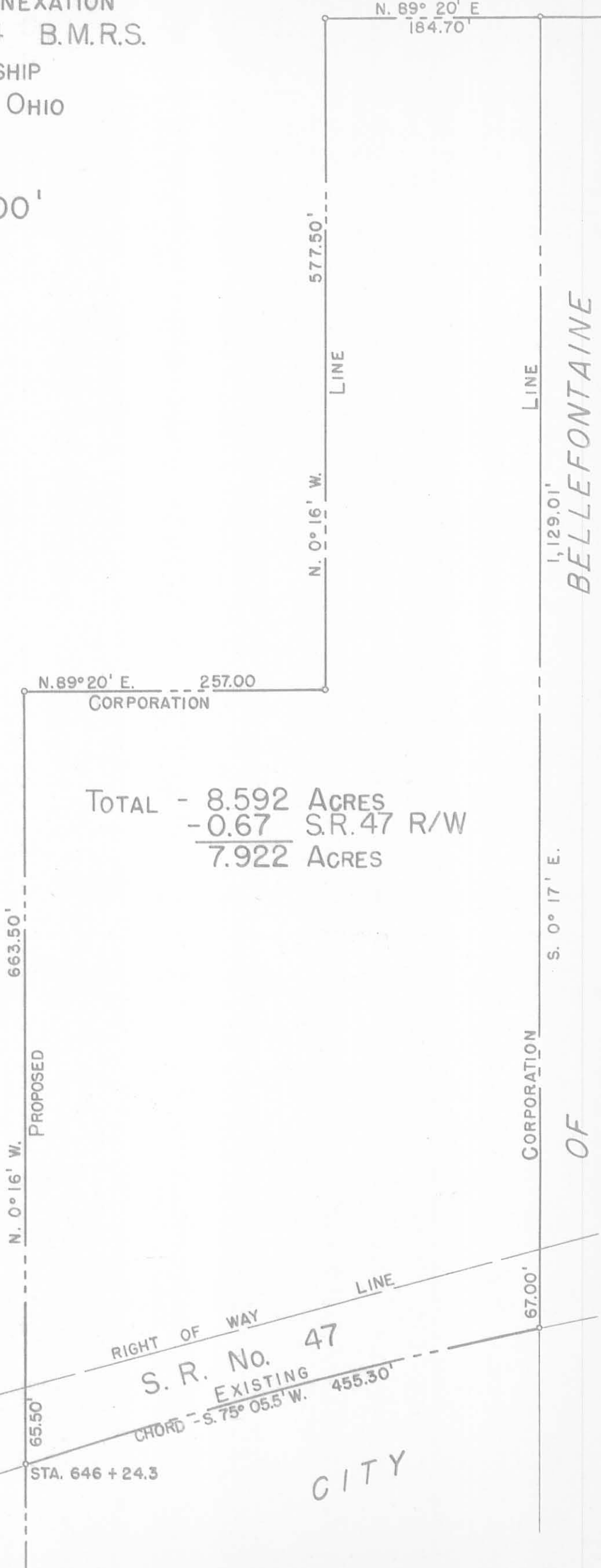


KELLY - LEVAN ANNEXATION
 SECTION 5 T.3 R.14 B.M.R.S.
 HARRISON TOWNSHIP
 LOGAN COUNTY, OHIO
 1981

SCALE: 1" = 100'



KENNETH H. IDLE ETUX
 118.97 ACRES



TOTAL - 8.592 ACRES
 - 0.67 S.R. 47 R/W

 7.922 ACRES

1,129.01'
 BELLEFONTAINE

CORPORATION

OF

265477

STATE OF OHIO
 RECEIVED Oct. 15, 1981
 TIME 2:27 PM
 RECORDED Oct. 15, 1981
 PLAT CABINET SLIDE 616
 A
 COLLINS
 COUNTY RECORDER

6586 IP

INDEXED ON MAP

R.L.R. 10-15-81

Transferred October 15, 1981
 Mary G. Slater per J
 Logan County Auditor

CALCULATED AND PLATTED BY:
 DANIEL E. GILBERT, P.S.
 REG. SUR. NO. 5402
 1041 N. MAIN ST.
 BELLEFONTAINE, OHIO 43311

STA. 646 + 24.3

CITY