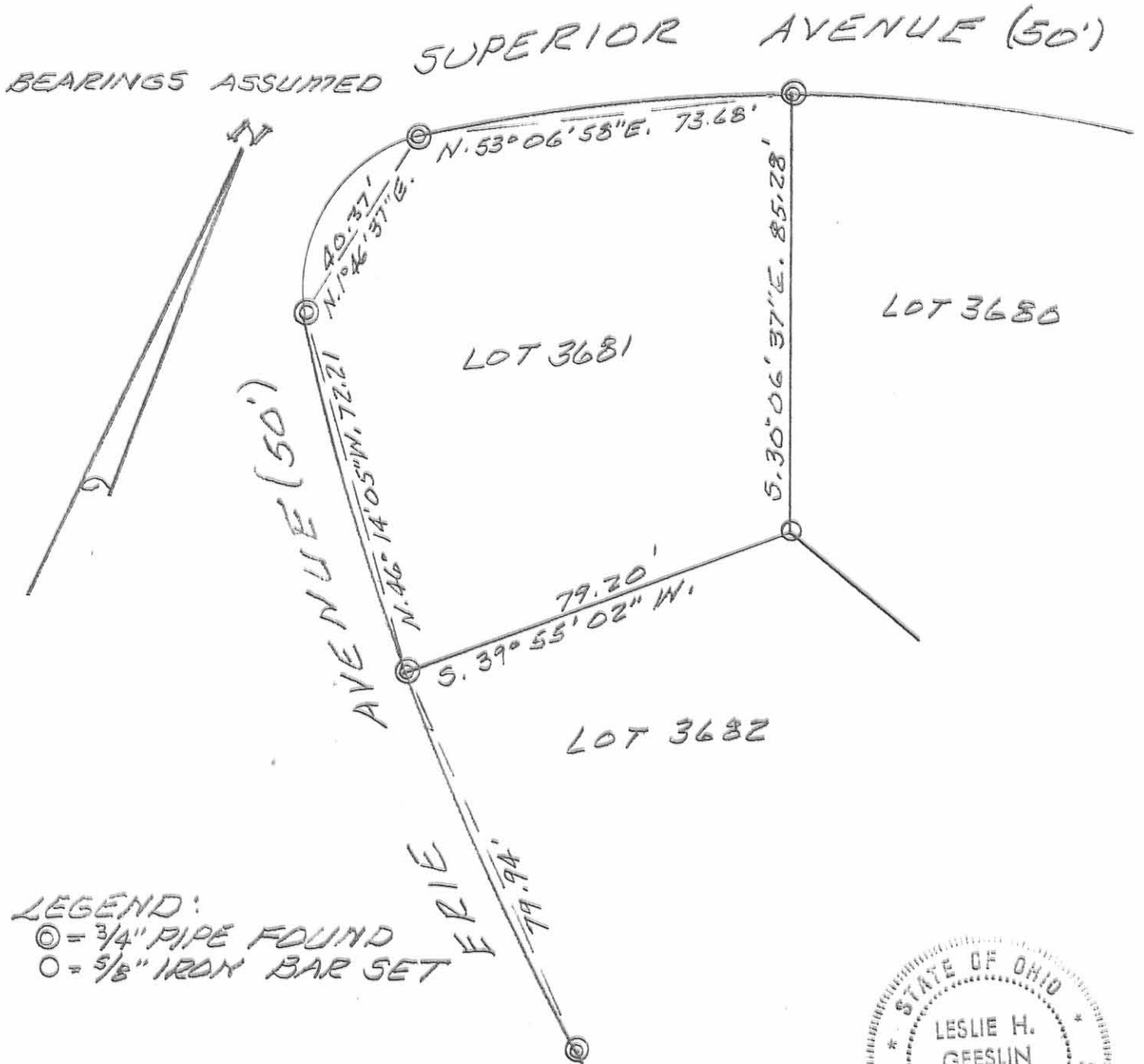


REC'D 7-15-98 SMM

SURVEY OF LOT 3681 OF LAKE HEIGHTS NO 1  
OF THE CITY OF BELLEFONTAINE, OHIO  
FOR CAROLYN EASLEY.

JULY 15, 1998  
SCALE: 1" = 30'



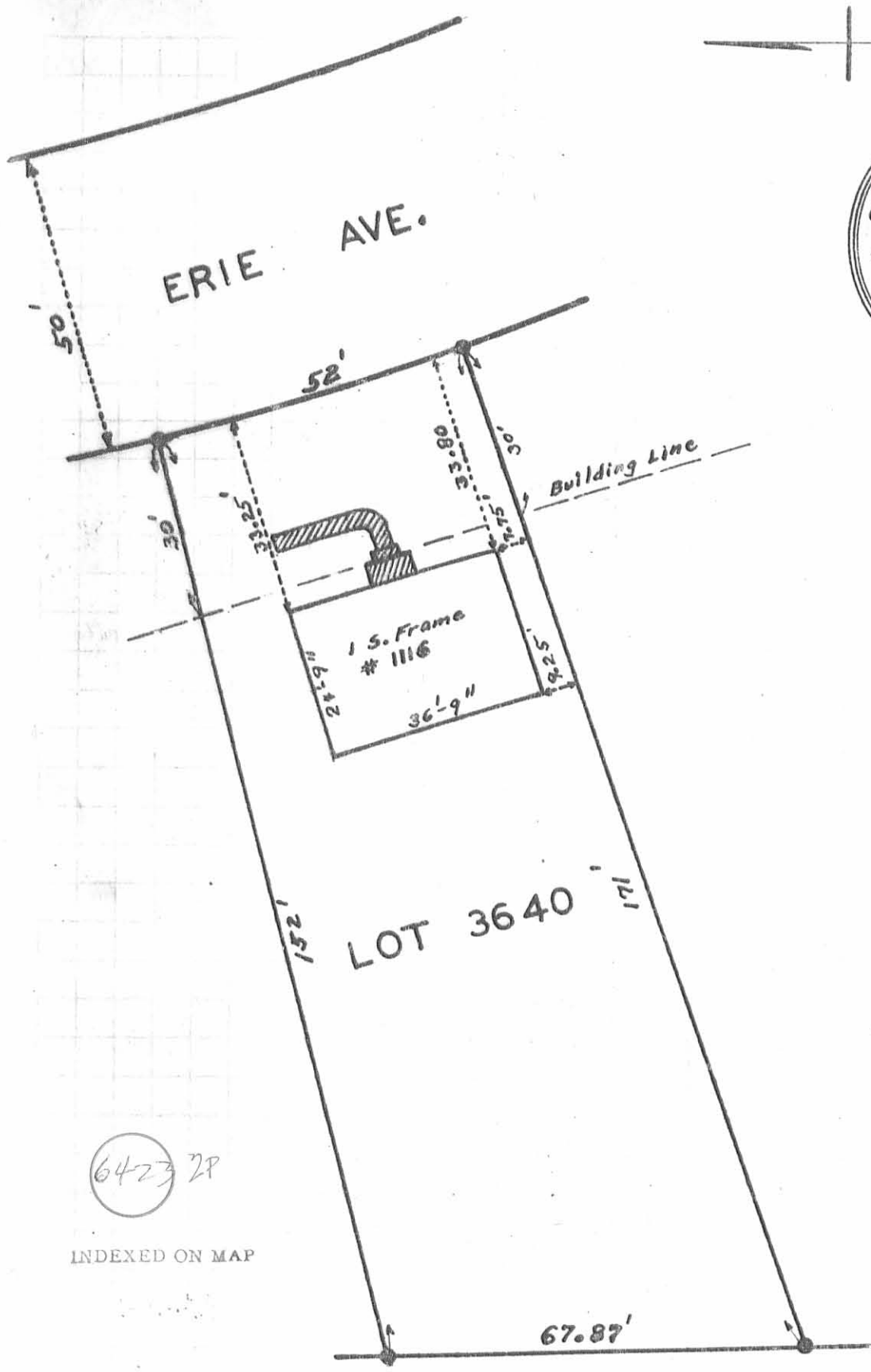
LEGEND:

- ⊙ = 3/4" PIPE FOUND
- = 5/8" IRON BAR SET



INDEXED ON MAP  
6423 IP

*Leslie H. Geeslin*  
LESLIE H. GEESLIN  
RUSHSVLVANIA, OHIO  
PH 937-468-2793



ERIE AVE.

Building Line

1 S. Frame  
# 1116

LOT 3640

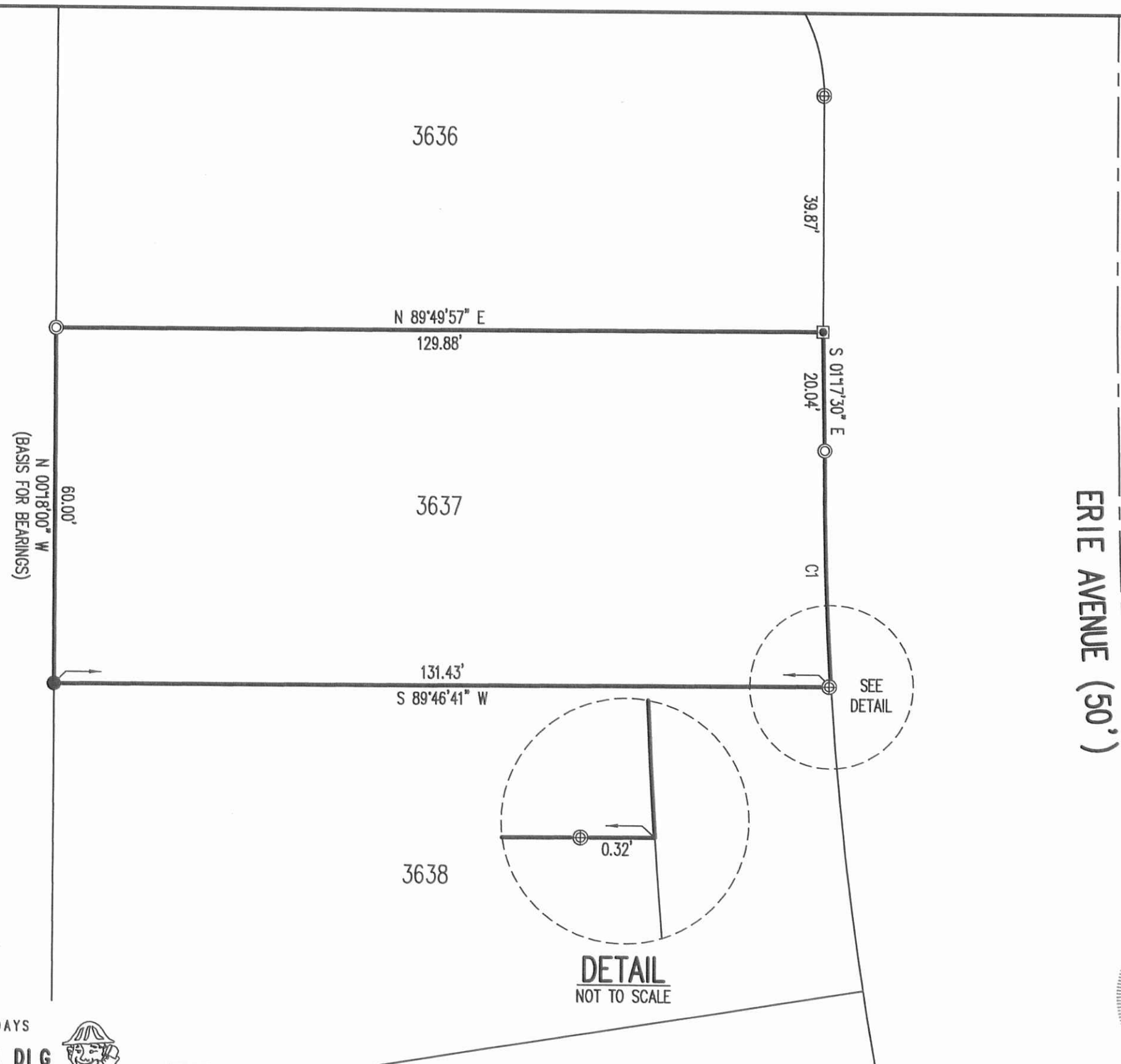
6423 2P

INDEXED ON MAP

● Irons

ELMORE SURVEY  
 BELLEFONTAINE OHIO  
 SEPT. 1952 1"=25'  
 F.F. WRIGHT

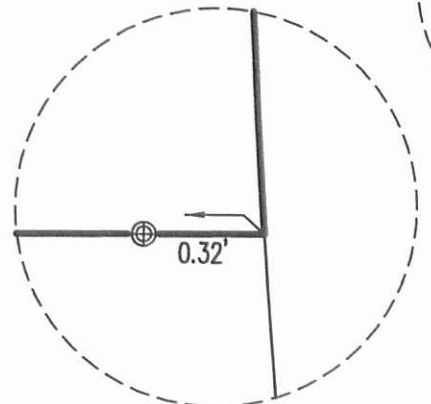
✓ **APPROVED** 8-17-15



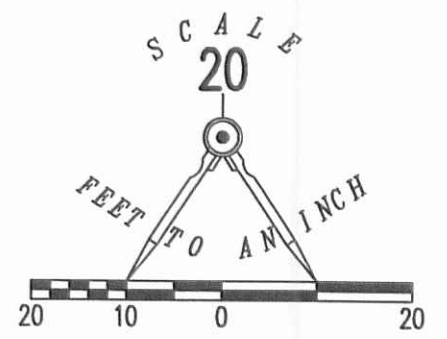
LEG LLC  
3.338 ACRES  
O.R. 1019, PG. 148

N 00°18'00\"/>

ERIE AVENUE (50')



CURVE	DELTA ANGLE	RADIUS	ARC LENGTH	CHORD BEARING	CHORD LENGTH
C1	03°52'16"	590.00'	39.86'	S 02°01'35\"/>	



- LEGEND:
- ⊕ 1 INCH IRON PIPE FOUND
  - ⊙ 3/4 INCH IRON PIPE FOUND
  - 1 INCH IRON BOLT FOUND
  - 5/8 INCH IRON ROD SET WITH PLASTIC I.D. CAP STAMPED "LSM 7437"

**RETRACEMENT SURVEY OF THE  
KARA N. MORRISON  
LOT 3637  
LAKE HEIGHTS ALLOTMENT NO ONE  
PLAT CABINET A, SLIDE 293  
OFFICIAL RECORD 1188, PAGE 473  
CITY OF BELLEFONTAINE  
LAKE TOWNSHIP  
LOGAN COUNTY, OHIO**

SURVEYED BY:

*William K. Bruce*  
WILLIAM K. BRUCE  
PROFESSIONAL SURVEYOR 7437  
AUGUST 13, 2015



COPYRIGHT 2015 BY:  
**LEE SURVEYING & MAPPING CO., INC.**  
117 North Madriver Street  
BELLEFONTAINE, OHIO 43311  
(937) 593-7335  
WWW.LSMINC.US  
surveys@lsminc.us

2 WORKING DAYS  
**BEFORE YOU DIG**  
CALL TOLL FREE **800-362-2764**  
OHIO UTILITIES PROTECTION SERVICE.

KSS D0715 59810715 L-5981-3

INDEXED ON MAP  
6423 3P