

Lee Surveying and Mapping Co.



Farm Surveys • Lot Surveys • Topography • Subdivisions • Construction Layout

855 EAST SANDUSKY AVENUE
BELLEFONTAINE, OHIO 43311

(513) 593-5780

CLAYTON M. LEE, P.S.
JEFFREY I. LEE, P.S.

STUPP SURVEY

Lying in the City of Bellefontaine, Lake Township, Logan County, Ohio and being the south part of Lot No. 234 and that 5 foot wide strip off the southwest side of Lot 235 (Refer: Volume 112, Page 308 and Volume 118, Page 496 for true length of 120 feet). Better described as follows:

Beginning at the southwest corner of said Lot No. 234.

THENCE, with the line between Lots 234 and 217, northerly, 144.52 feet to an iron rod.

THENCE, parallel to Auburn Street, easterly, a distance of 55.19 feet to a point in the east line of said Lot No. 234.

THENCE, southerly with said east line, a distance of 25.42 feet to the northwest corner of the aforementioned 5 foot wide strip.

THENCE, with the north line of the 5 foot strip, easterly a distance of five feet to the northeast corner of said strip.

THENCE, southerly, parallel to the east line of Lot 234, a distance of 120.0 feet to the north line of Auburn Street.

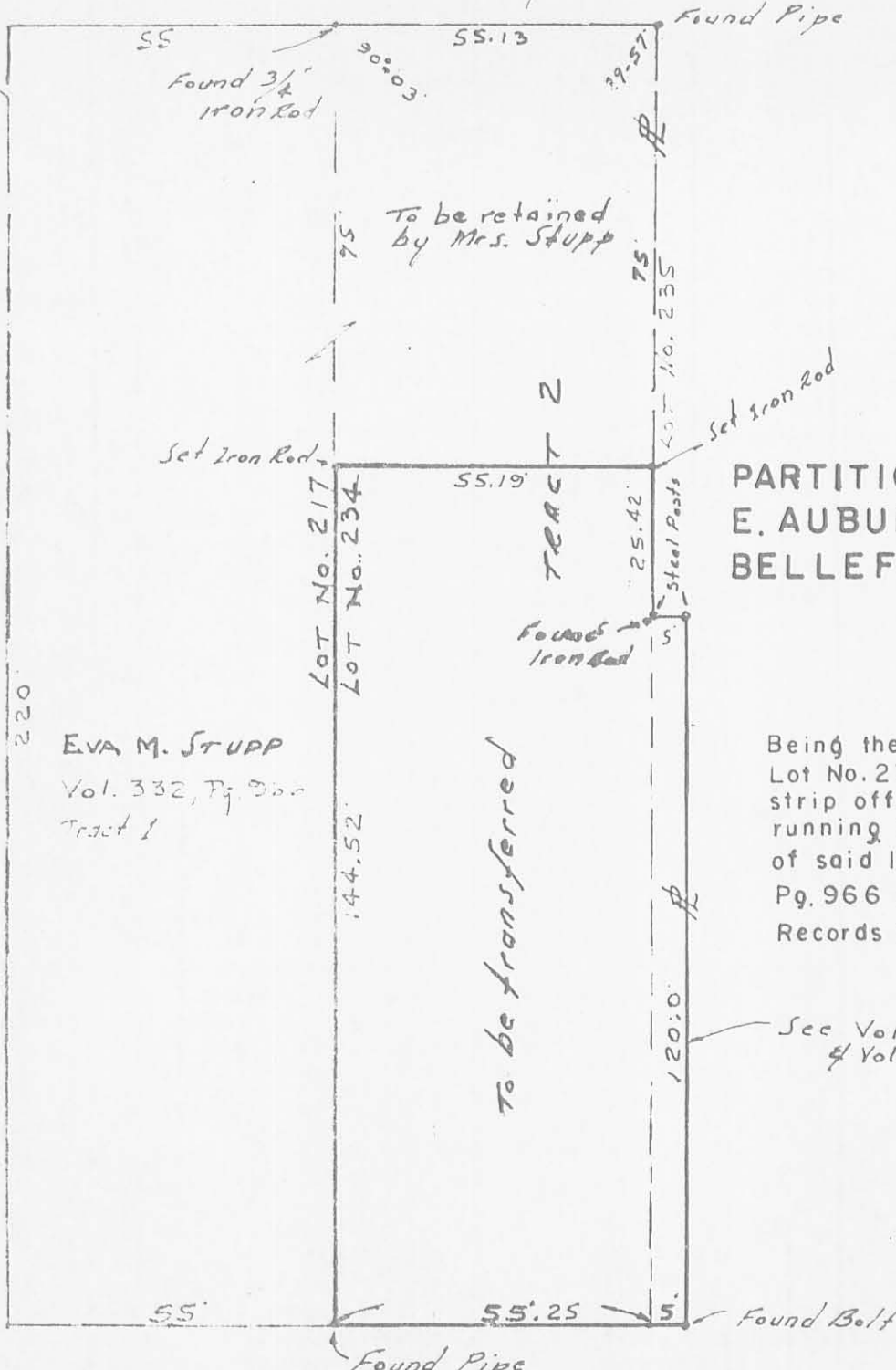
THENCE, with said north line, westerly, a distance of 60.25 feet to the point of beginning. Containing 8580 square feet. (0.197 acre).

Last preceding deed reference: Volume 332, Page 966.

Surveyed by:

Clayton M. Lee
Reg. Surveyor No. 6181
3-9-79





SCALE ~ 1" = 30'

**PARTITIONING OF LOT NO. 234
E. AUBURN AVENUE
BELLEFONTAINE, OHIO**

Being the south 144.52 feet of Lot No. 234 and a 5 foot wide strip off the west side of Lot 235 running north from the south line of said lot as described in Vol. 332, Pg. 966 of the Logan County Records of Deeds.

See Vol. 112, Pg. 308
 & Vol. 373, Pg. 556
 118, Pg. 496

Prepared by:
Clayton M. Lee
 Clayton M. Lee
 Reg. Surveyor 6181

3-9-79

E AUBURN

6289 1P

INDEXED ON MAP

LEE SURVEYING & MAPPING CO.
 855 E. Sandusky Ave.
 BELLEFONTAINE, OHIO 43311
 (513) 593-5780