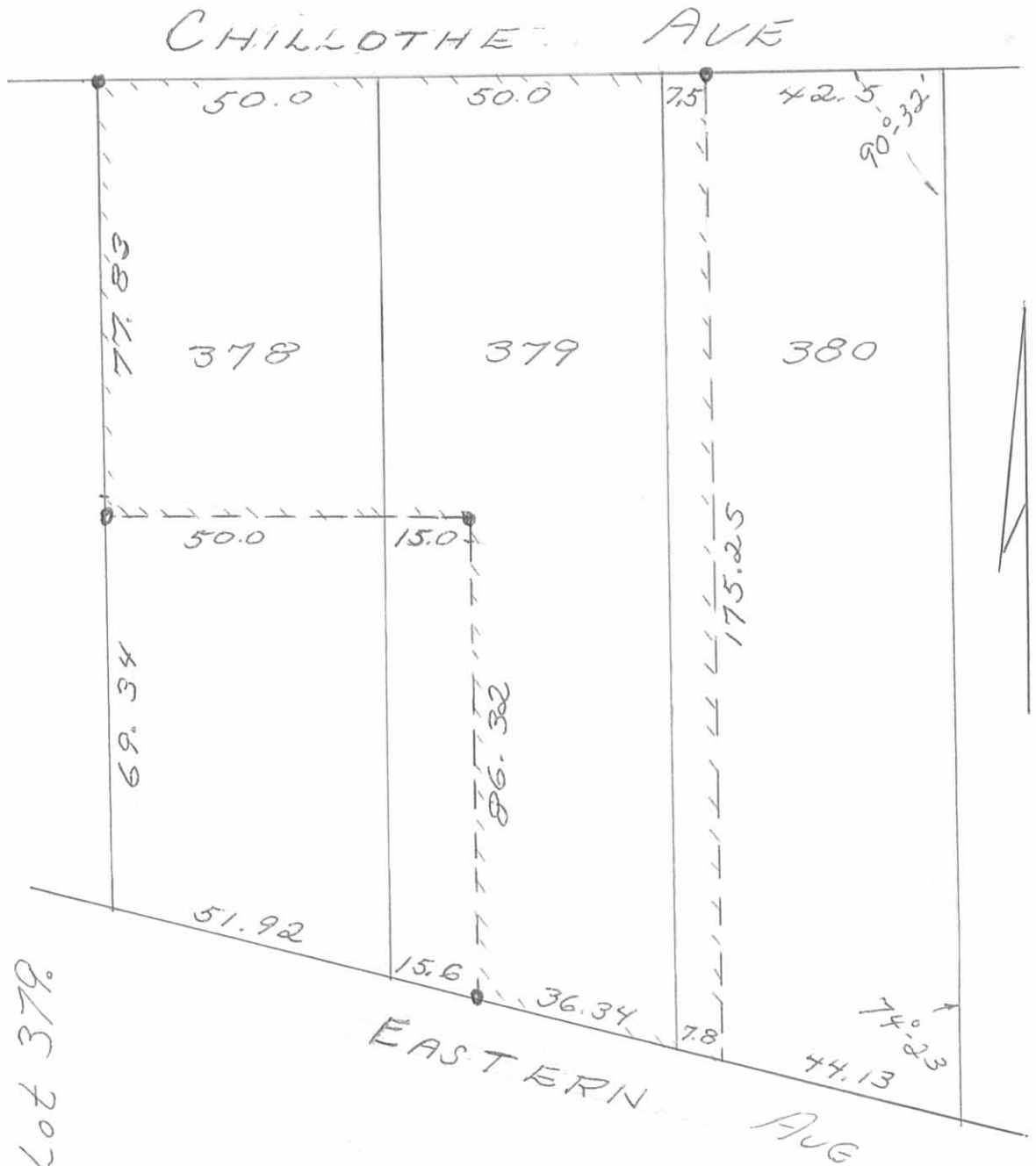


WILBOBY SURVEY
 A PART OF LOTS 378, 379, & 380
 BELLEFONTAINE, OHIO

Being Lots 378, 379 & 7 1/2 feet off
 the west side of lot 380. Excepting:
 the south half of lot 378 & 15 feet east & west
 off the west side of the south one half
 of lot 379.



1" = 30'

(6155) IP

INDEXED ON MAP

OWEN K. SHIRK
 SURVEYOR 4271
 Aug., 1971