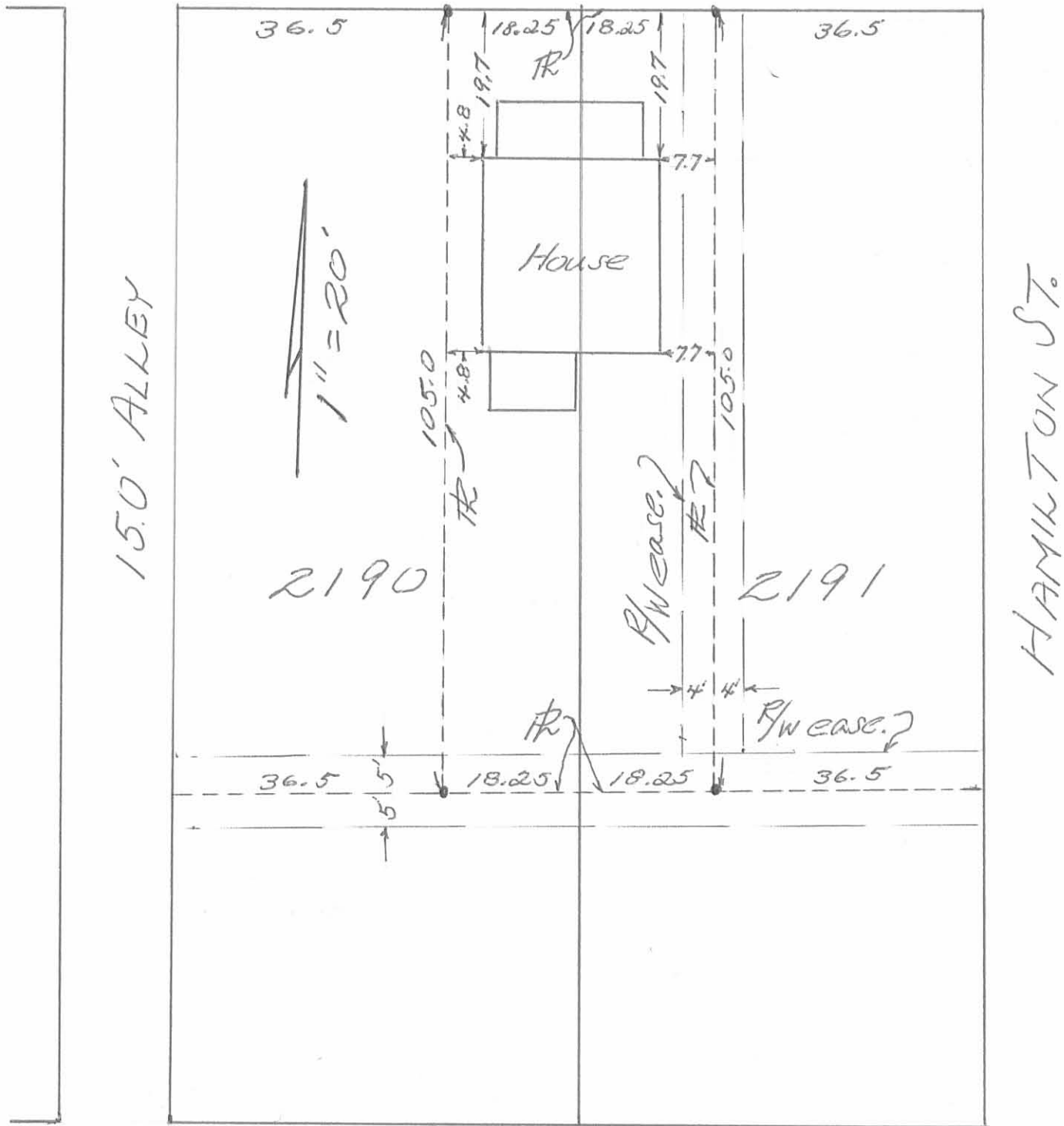


212 E. SPRING AVE

PART OF LOTS 2190 & 2191; BELLEFONTAINE, O.

SEC. 34, T-4; R-14; LAKE TWP., LOGAN CO.

SPRING AVE



I hereby certify the above plat represents a true survey of a parcel of ground recorded in Vol. 300, page 45, Logan Co. Recorder's office made by me Oct. 13, 1973. There are no encroachments.

6150 IP

Owen K. Shirk
Surveyor #271

INDEXED ON MAP