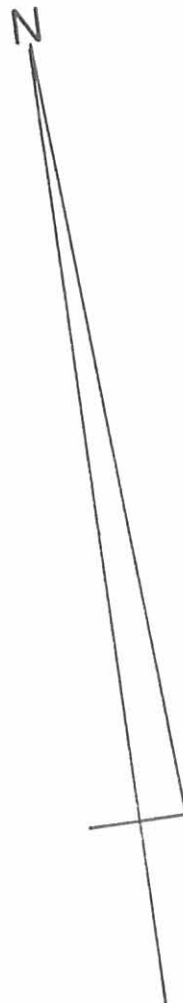
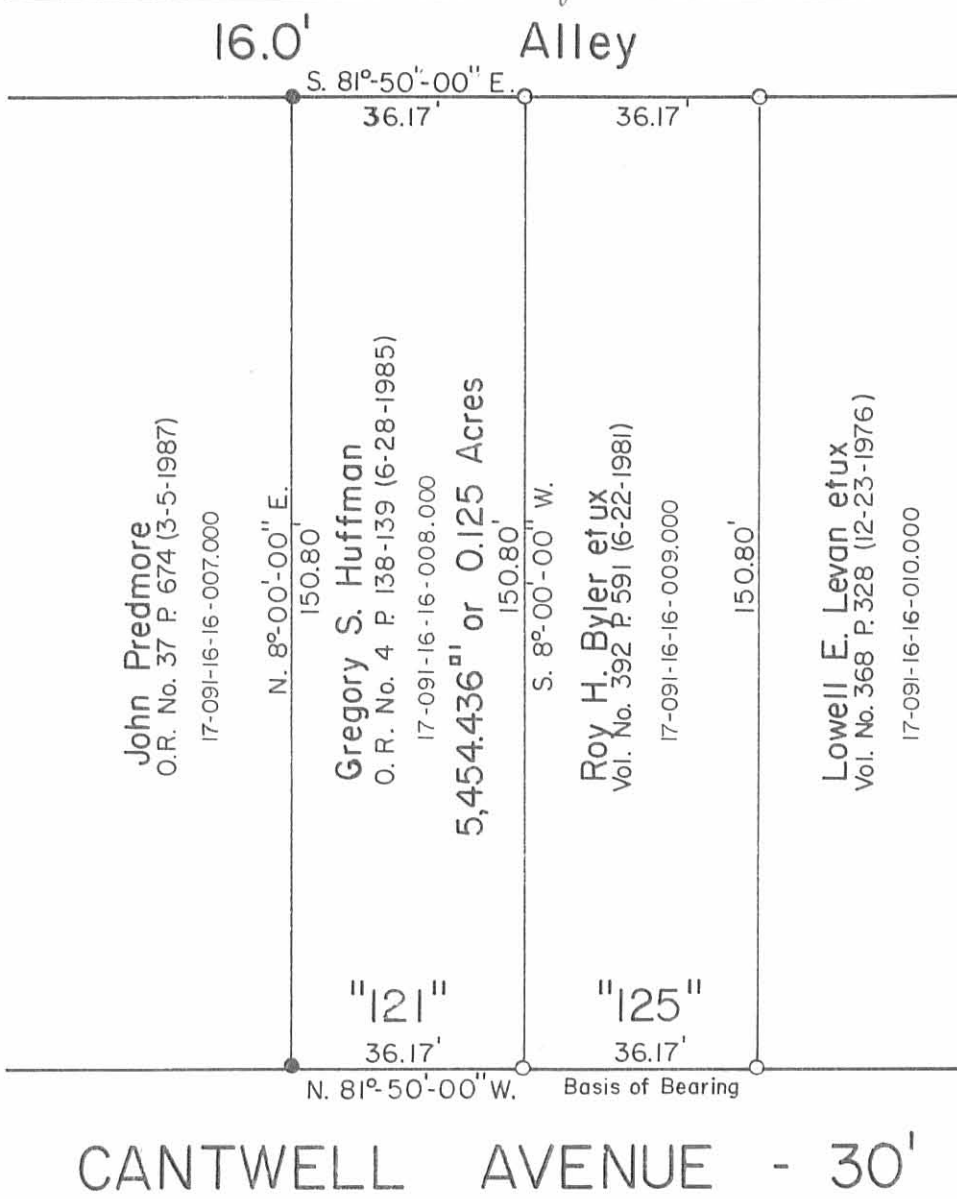


Map Room REC'D 2-3-95 JUY



SYMBOLS:

- - 5/8" Rebars Fd.
- - 5/8 x 30' Rebars Set.

Gregory S. Huffman Survey
Part of Out Lot No. 121
McColloch's Subdivision
Section No. 34, T.4, R.14 B.M.R.S.
City of Bellefontaine
Lake Township
Logan County, Ohio
April 15, 1994



Scale: 1" = 30'

INDEXED ON MAP
@102 1P

Daniel E. Gilbert
DANIEL E. GILBERT, P.S.
REG. SUR. NO. 5402
400 N. PARK ST.
BELLEFONTAINE, OHIO 43311
TELEPHONE: 1 (513) 593-1428



094-014

MUMMEY SURVEY - 125 CANTWELL
 BELLEFONTAINE, OHIO



Owen K. Stirk
 Surveyor 4271
 Nov. , 1975

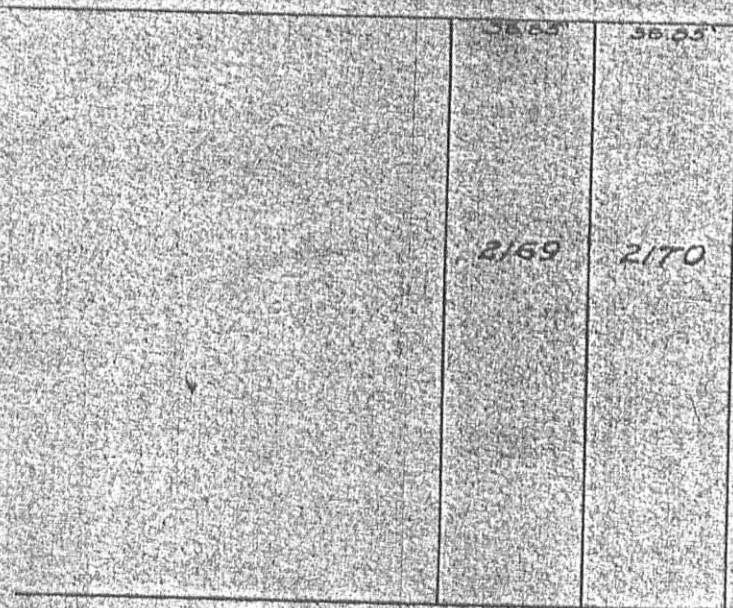


INDEXED ON MAP



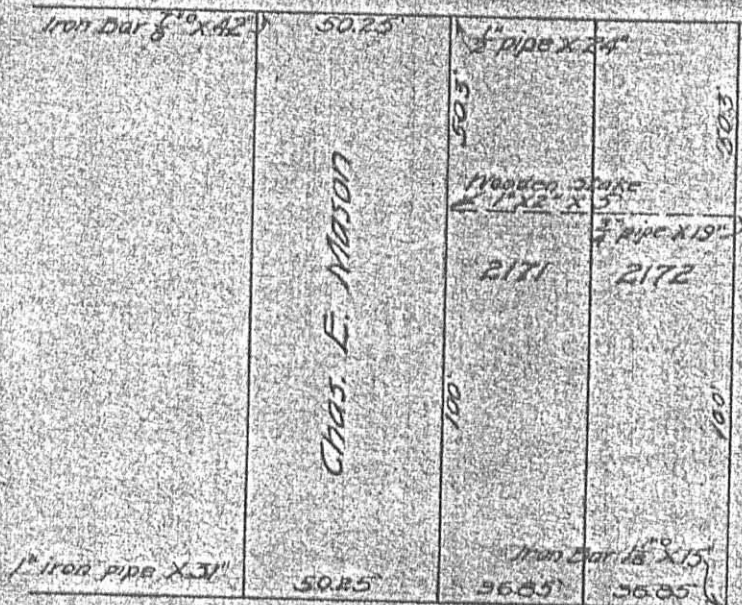
SPRING AVENUE

Iron Bar



Riley - 15' wide

RILEY STREET



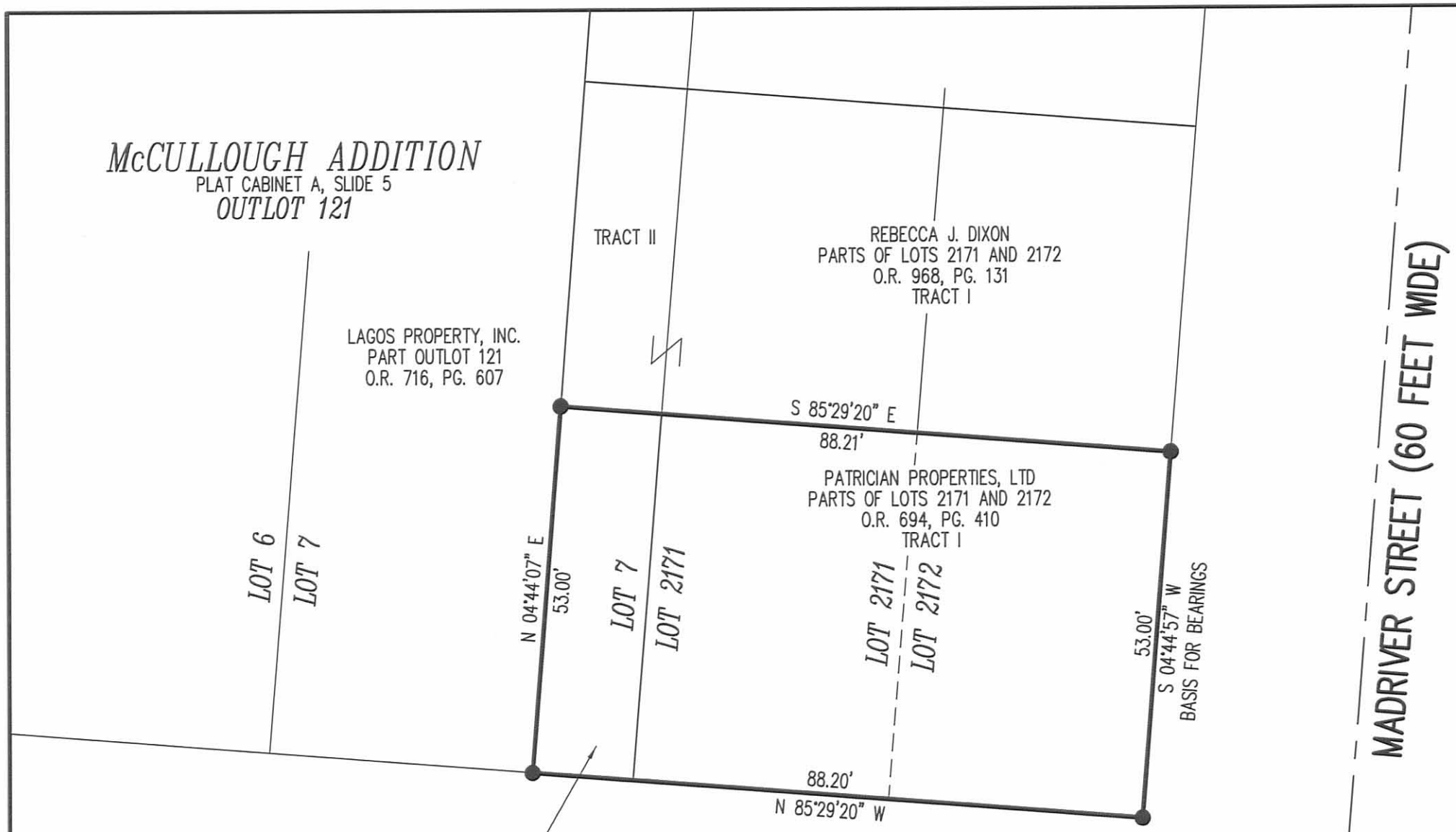
Chas. E. Mason

MAD RIVER

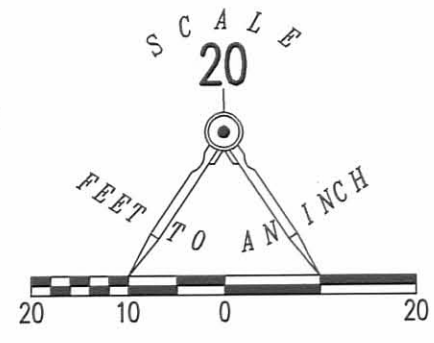
CANTWELL AVENUE

Iron Bar

Survey of Chas. E. Mason Property
 Parts of Lots 2171-72 and Out-lot 121.
 Surveyed May 6-1907 by J. K. Buchanan.
 Scale - 1" = 50' September 11-1911.
 Office of the City Engineer.
 Bellefontaine - Ohio.



LEGEND
● 5/8 INCH IRON ROD SET WITH PLASTIC I.D. CAP STAMPED "LSM7437"



RETRACEMENT SURVEY OF THE
PATRICIAN PROPERTIES, LTD
PARTS OF LOTS 2171 AND 2172 ALSO
PART OF SUBDIVISION NO. 7 OF OUT LOT 121
OFFICIAL RECORD 694, PAGE 410
TRACTS I AND II
SPRING VALLEY ADDITION
PLAT CABINET A, SLIDE 36
McCULLOUGH ADDITION
PLAT CABINET A, SLIDE 5
CITY OF BELLEFONTAINE
LAKE TOWNSHIP
LOGAN COUNTY, OHIO

MADRIVER STREET (60 FEET WIDE)

CANTWELL STREET (30 FEET WIDE)

SURVEYED BY:

William K. Bruce

WILLIAM K. BRUCE
PROFESSIONAL SURVEYOR 7437
JULY 23, 2012



ORIGINAL STAMP IN GREEN

COPYRIGHT 2012 BY:
LEE SURVEYING & MAPPING CO., INC.
117 North Madriver Street
BELLEFONTAINE, OHIO 43311
(937) 593-7335
WWW.LSMINC.US
surveys@lsminc.us

ADW D0712 53690712 L-5369-3

2 WORKING DAYS
BEFORE YOU DIG
CALL TOLL FREE 800-362-2764
OHIO UTILITIES PROTECTION SERVICE

INDEXED ON MAP
6102 4P