

REC'D 7-5-07 SWM OK

MAD RIVER STREET (60')

151.87'
N 04°37'27" E

S 85°26'41" E
30.00'

N 04°37'27" E
40.00'

S 85°26'41" E
116.97'

10' ALLEY

TAMARA L. KELLER
LOT 2187
O.R. 581, P.G. 955

LOT 2187

116.98'
N 85°26'45" W

LOT 2188

40.00'
S 04°36'40" W

LOT 2200

VACATED
ALLEY

LOT 2201

10' ALLEY

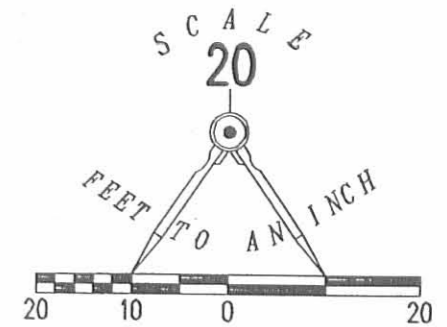
LOT 2189

15' ALLEY

LOT 2202

COLTON AVENUE (50')

S 85°26'53" E
BASIS FOR BEARINGS



LEGEND

- ⊙ MAG NAIL SET
- ⊗ MAG SPIKE FOUND
- 5/8 INCH IRON ROD SET
- ⊕ MAG SPIKE SET

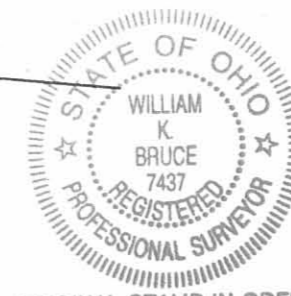
A RETRACEMENT SURVEY OF THE
TAMARA L. KELLER
LOT 2187
OFFICIAL RECORD 581, PAGE 955
SPRING VALLEY ADDITION
PLAT CABINET A, SLIDE 36
SECTION 34, TOWN 4, RANGE 14
CITY OF BELLEFONTAINE
LAKE TOWNSHIP
LOGAN COUNTY, OHIO

SURVEYED BY:

William K. Bruce

WILLIAM K. BRUCE
PROFESSIONAL SURVEYOR 7437
JULY 2, 2007

COPYRIGHT 2007 BY:
LEE SURVEYING & MAPPING CO., INC.
117 North Madriver Street
BELLEFONTAINE, OHIO 43311
(937) 593-7335
surveys@lsmcinc.us



ORIGINAL STAMP IN GREEN

INDEXED ON MAP
6094 IP

2 WORKING DAYS
BEFORE YOU DIG
CALL TOLL FREE 800-362-2764
OHIO UTILITIES PROTECTION SERVICE

ADW D0707 4457067 L-4457067-3

DUFF SURVEY

LOT 2202 - BELLEFONTAINE, OHIO

1" = 40'

• DENOTES IRONS



Irons were placed in middle of alley for locations.

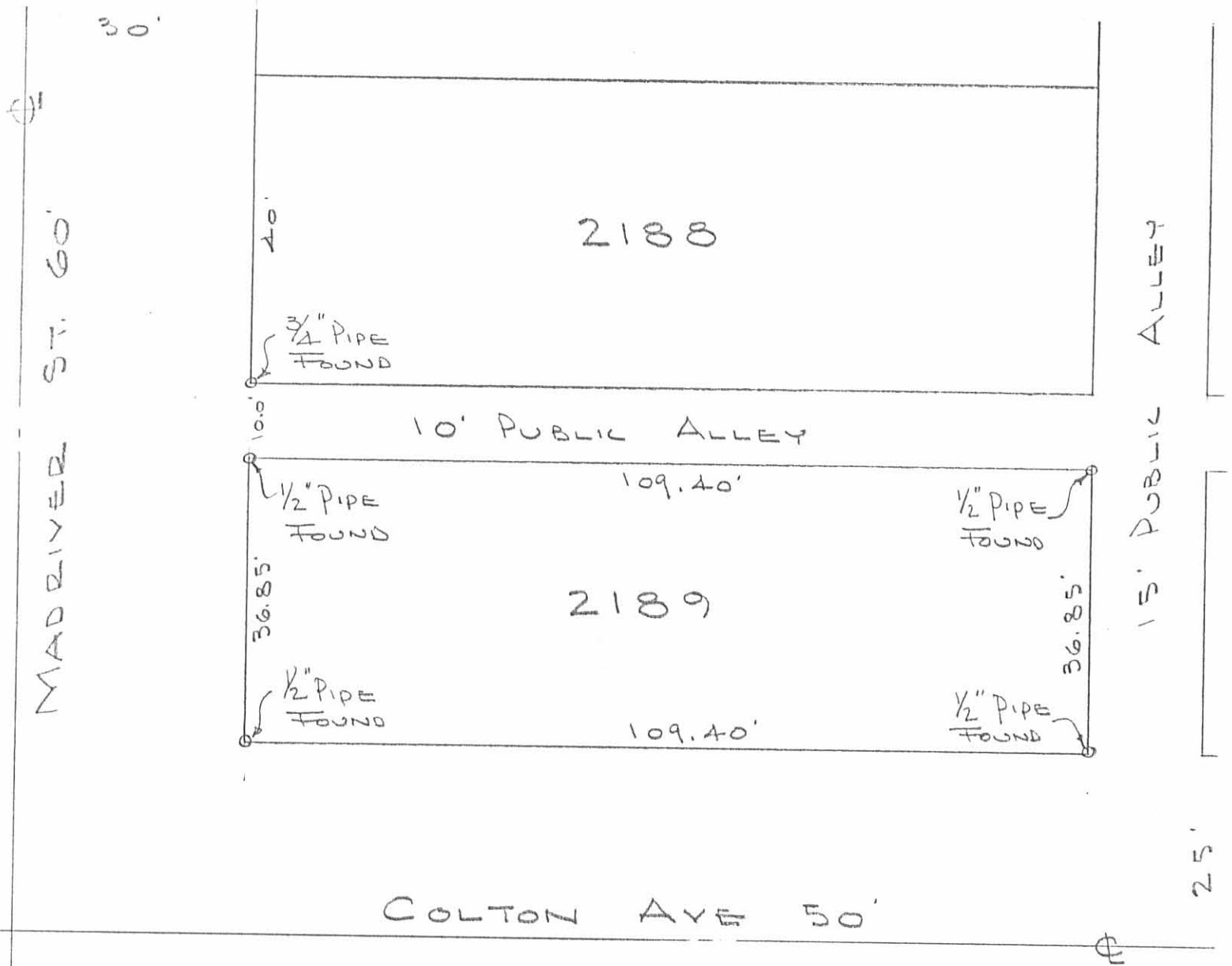
HAMILTON ST.

Owen K. Shirk

Surveyor 4271

April 14, 1977

6094 2P



SURVEY OF
 LOT NO. 2189
 BELLEFONTAINE, OHIO
 NOV. 4, 1978
 SCALE 1" = 20'



REF:
 SPRING VALLEY ADD.
 FLAT BK A VOL. 2 PG. 36
 CITY INDEX No. 1180

INDEXED ON MAP
 6094 3P

DAN L. DODSON
 REG. SURVEYOR 4270
 BELLEFONTAINE, O.