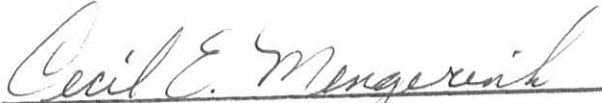
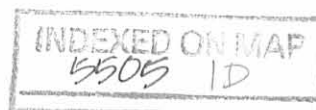


DESCRIPTION OF LAND TO ACCOMPANY THE PETITION BY THE HUMBLE CONSTRUCTION COMPANY FOR ANNEXATION TO THE CITY OF BELLEFONTAINE, OHIO:

BEGINNING AT AN IRON PIPE MARKING THE INTERSECTION OF THE WEST LINE OF V.M.S. 4778 WITH THE NORTH LINE OF RESERVOIR ROAD-  
THENCE N.  $0^{\circ}34'E.$ , ALONG SAID WEST LINE OF V.M.S. 4778, A DISTANCE OF THREE HUNDRED FIFTY-TWO (352) FEET TO A POINT MARKED BY AN IRON PIPE-  
THENCE S.  $88^{\circ}59'E.$ , A DISTANCE OF SEVEN HUNDRED SEVENTY-SEVEN AND  $90/100$  (777.90) FEET TO A POINT MARKED BY AN IRON PIPE-  
THENCE S.  $0^{\circ}41'W.$ , A DISTANCE OF THREE HUNDRED FIFTY-TWO (352) FEET TO A POINT ON THE NORTH LINE OF SAID RESERVOIR ROAD WHICH IS MARKED WITH A STEEL POST-  
THENCE S.  $88^{\circ}59'E.$ , ALONG SAID NORTH LINE OF RESERVOIR ROAD, A DISTANCE OF TWENTY-SIX AND  $95/100$  (26.95) FEET TO A POINT-  
THENCE N.  $0^{\circ}22'E.$ , A DISTANCE OF FIVE HUNDRED SEVENTY-FOUR AND  $40/100$  (574.40) FEET TO A POINT WHICH IS MARKED WITH A CORNER POST-  
THENCE S.  $89^{\circ}27'E.$ , A DISTANCE OF THREE HUNDRED THIRTY-TWO AND  $24/100$  (332.24) FEET TO A POINT WHICH IS MARKED WITH A CORNER POST-  
THENCE S.  $0^{\circ}53'W.$ , A DISTANCE OF FIVE HUNDRED SEVENTY-SEVEN AND  $50/100$  (577.50) FEET TO A POINT ON THE NORTH LINE OF SAID RESERVOIR ROAD-  
THENCE N.  $88^{\circ}59'W.$ , ALONG THE NORTH LINE OF SAID RESERVOIR ROAD, A DISTANCE OF ONE THOUSAND ONE HUNDRED AND THIRTY-TWO (1,132) FEET TO THE POINT OF BEGINNING-  
CONTAINING TEN AND  $65/100$  (10.65) ACRES OF LAND.

  
CECIL E. MENERINK  
REGISTERED SURVEYOR #3151  
MAY 1, 1972



TRANSFERRED ON THIS 7<sup>th</sup> DAY OF  
MARCH, 1973.  
Mary G. Slater  
 LOGAN COUNTY AUDITOR

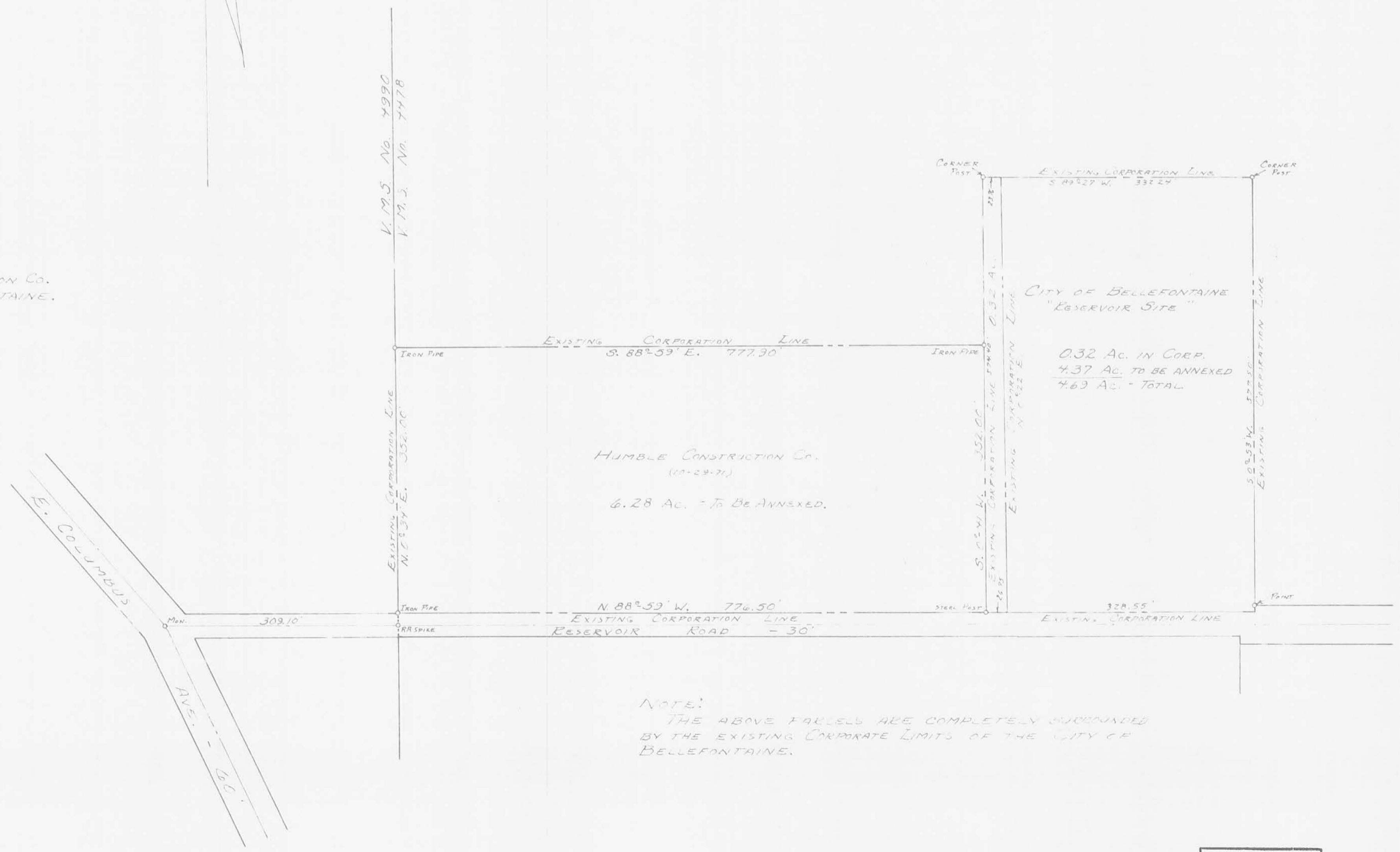
RECEIVED FOR RECORD AT 2:16 O'CLOCK P.M.  
 ON THIS 8<sup>th</sup> DAY OF MARCH, 1973.  
 RECORDED IN PLAT BOOK G VOLUME F PAGE 60.  
Ruth Royer  
 LOGAN COUNTY RECORDER

MAP OF TERRITORY  
 TO BE ANNEXED TO THE  
 CITY OF BELLEFONTAINE  
 V.M.S. No. 4478  
 LAKE TOWNSHIP  
 LOGAN COUNTY, OHIO  
 APRIL 1972

SCALE: 1" = 100'



PARCELS TO BE ANNEXED.  
 6.28 AC. - HUMBLE CONSTRUCTION CO.  
 4.37 AC. - CITY OF BELLEFONTAINE.  
 10.65 AC. TOTAL



NOTE:  
 THE ABOVE PARCELS ARE COMPLETELY SURROUNDED  
 BY THE EXISTING CORPORATE LIMITS OF THE CITY OF  
 BELLEFONTAINE.

MAP PREPARED BY:  
 DANIEL E. GILBERT, P.S.  
 REG. SUR. NO. 5402  
 1041 N. MAIN ST.  
 BELLEFONTAINE, OHIO 43311

INDEXED ON MAP  
 5905

NOTE  
 THIS TRACING TO BE FILED IN THE OFFICE  
 OF THE BELLEFONTAINE CITY ENGINEER.