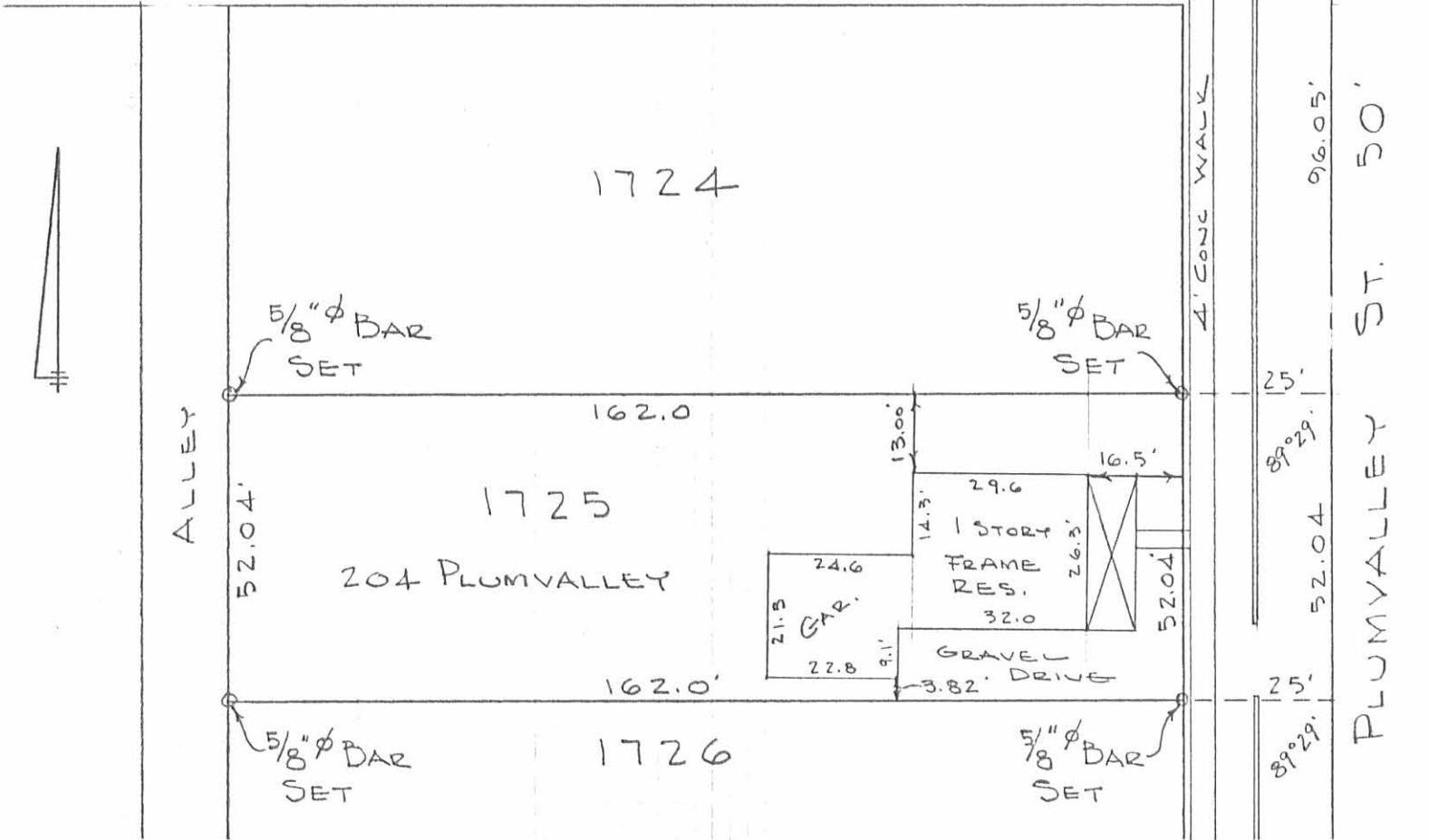


CHILlicothe Ave. 60'

Mon.

89°29'



SURVEY OF LOT 1725
 BELLEFONTAINE, OHIO
 OCTOBER 25, 1969
 SCALE 1" = 30'

I hereby certify that this plat is a correct representation of a survey made by me and that the same shows the improvements as located on the premises. The improvements are entirely within the property lines and there are no encroachments on the premises by improvements on adjoining premises.

Dan L. Dodson

Dan L. Dodson
 Reg. Surveyor 4270
 Bellefontaine, Ohio

INDEXED ON MAP
 4757 IP

