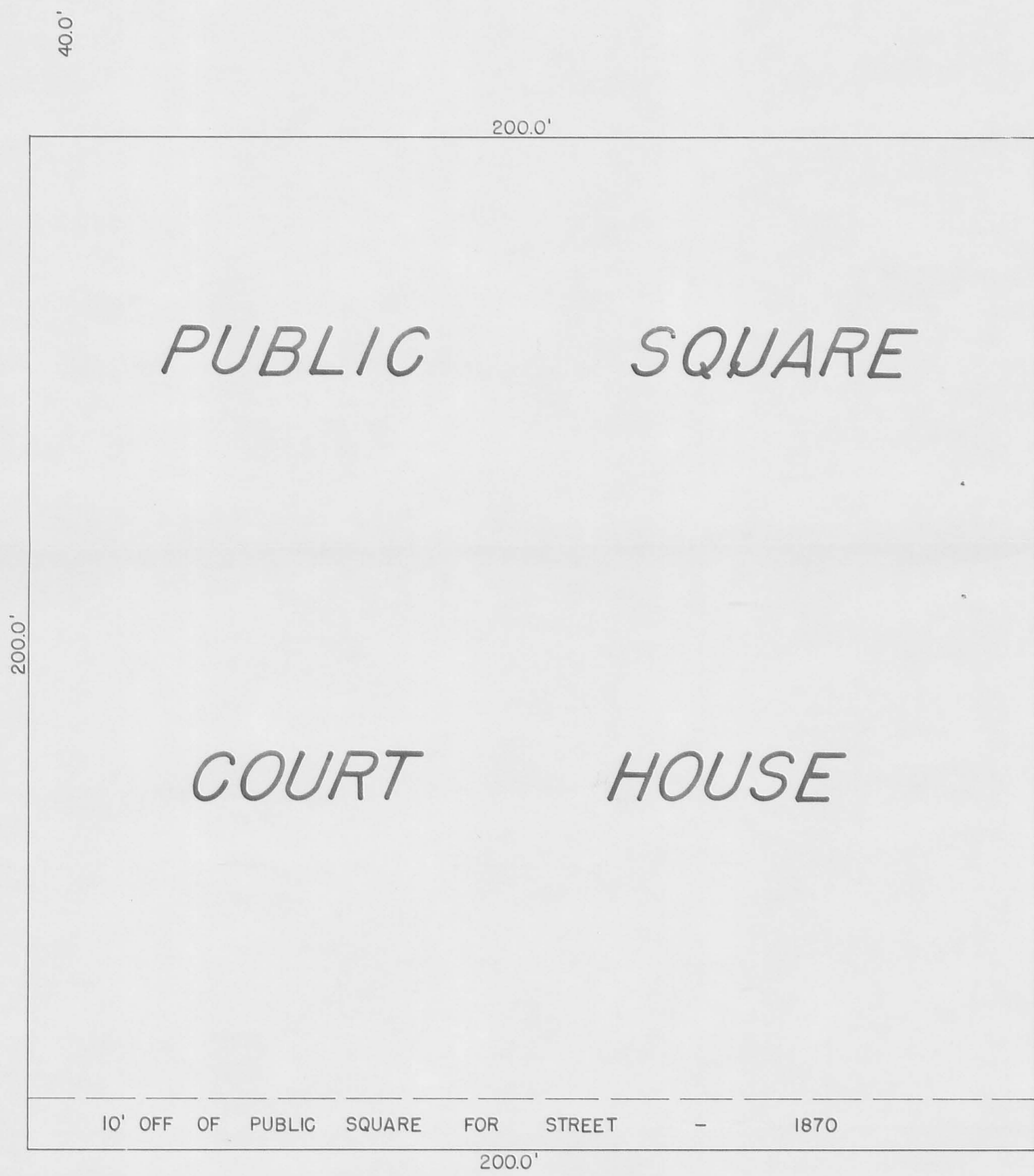


COLUMBUS

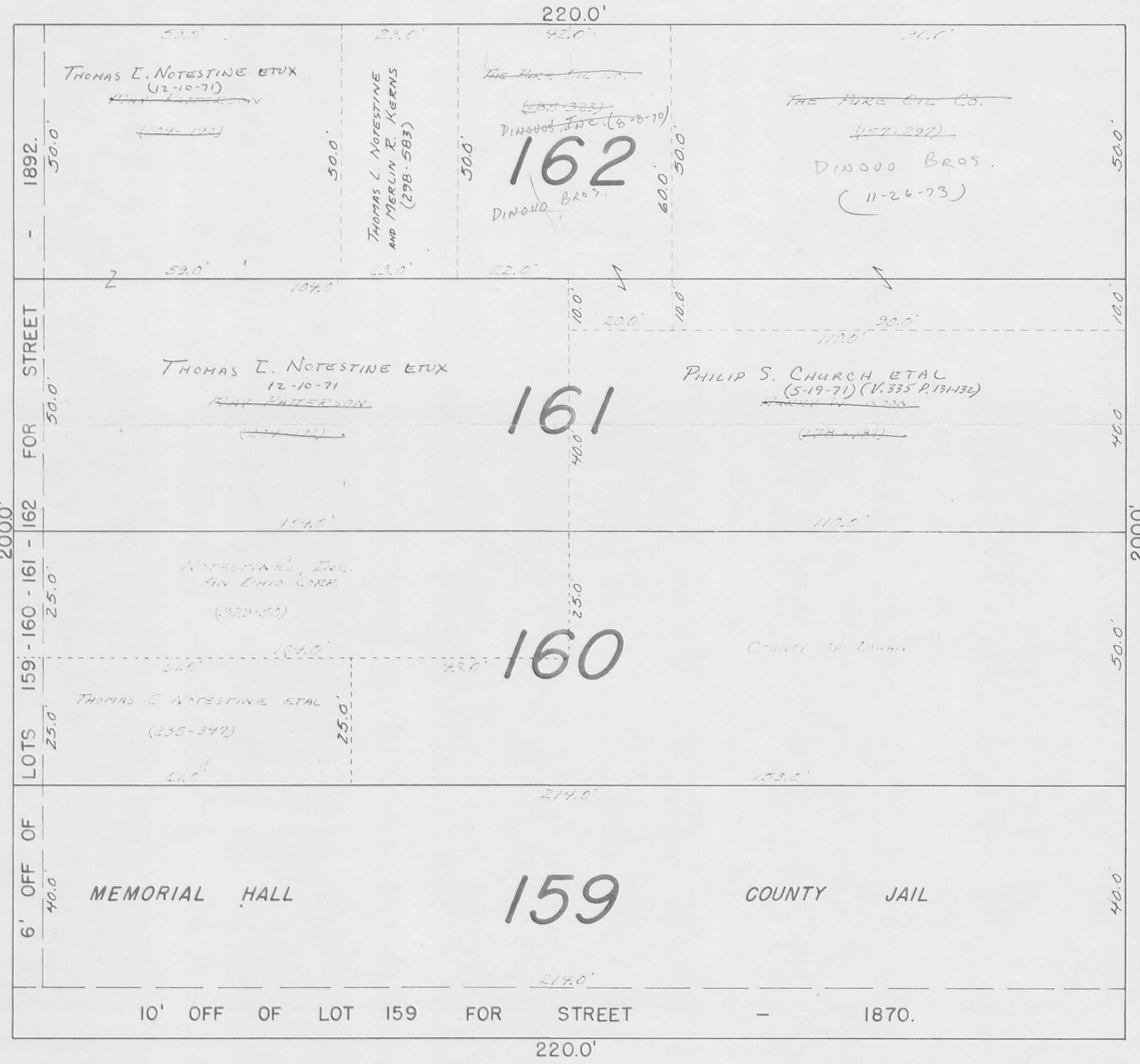
AVE.

80'

ST. - 80'



ST. - 36.5'



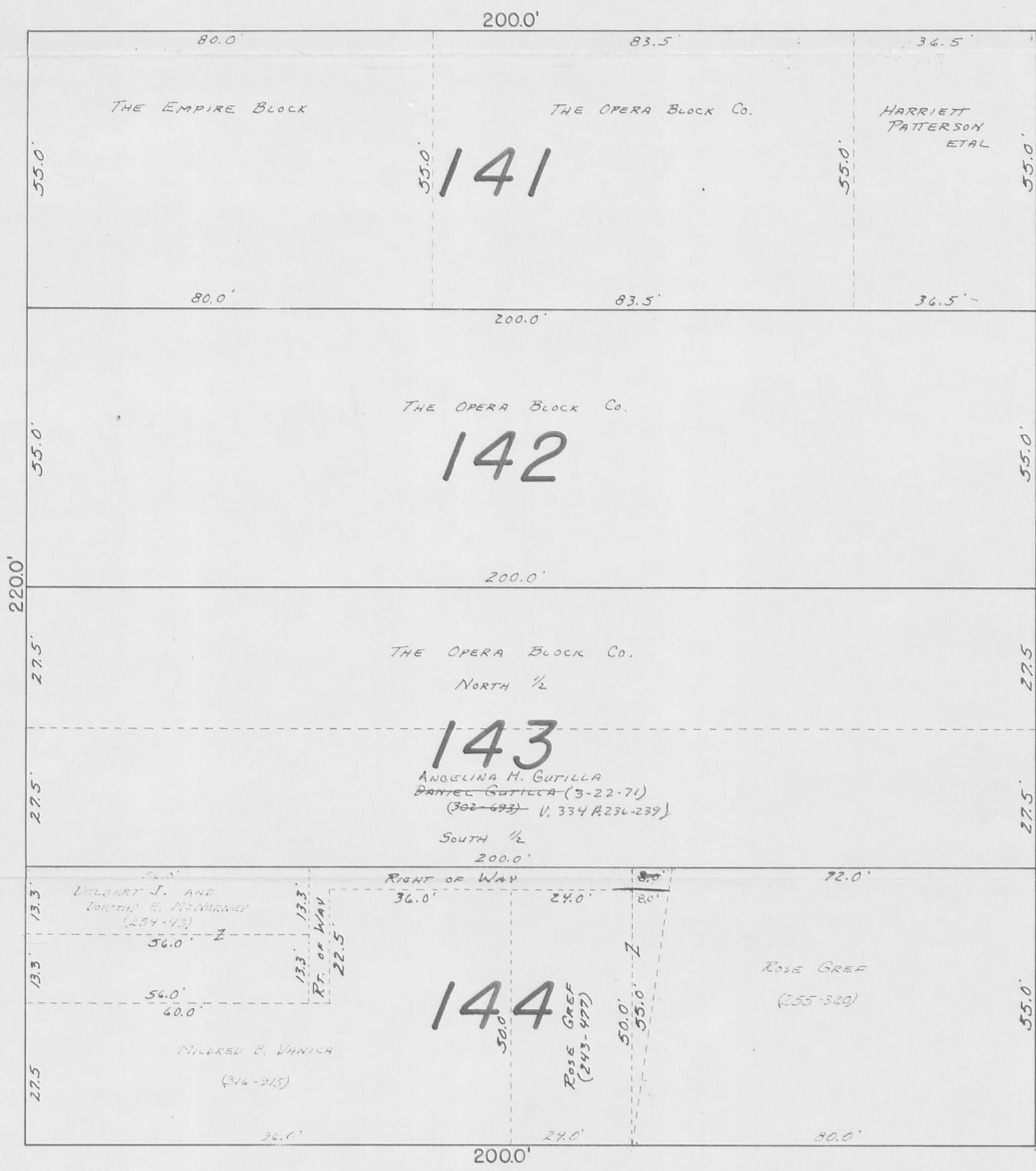
ST. - 60'

COURT

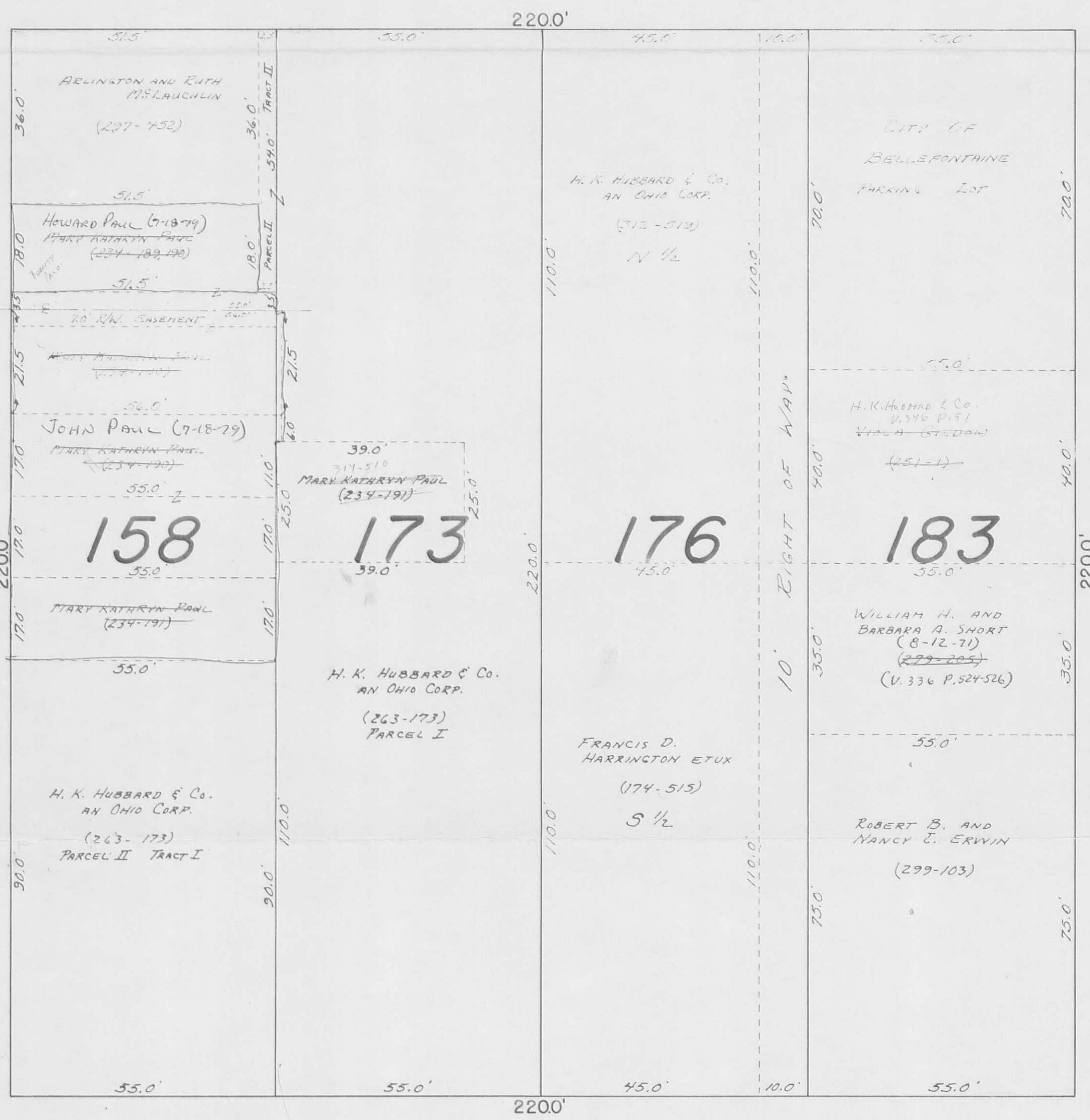
AVE.

36.5'

MAIN



ST. - 36.5'



MADRIVER

CHILLICOTHE

AVE.

60'

REC'D 1-20-00 SMY OK ✓

# Lee Surveying and Mapping Co., Inc.

Land Surveys • Topography • Subdivisions • Construction Layout

117 N. Madriver St.  
Bellefontaine OH 43311



Phone: (937) 593-7335  
Fax: (937) 593-7444


## THE LOGAN COUNTY BANK CITY OF BELLEFONTAINE LOT 144

Lying in the City of Bellefontaine, Lake Township, Logan County, Ohio.

Being all of The Logan County Bank, an Ohio Corporation, parts of Lot 144 as deeded and described in Volume 356, Page 133, Tracts I, II and III, and all of The Logan County Bank, an Ohio Corporation, parts of Lot 144 as deeded and described in Volume 348, Page 737, Parcels One and Two, and being more particularly described as follows:

Being all of Lot 144 of the original plat of the City of Bellefontaine as shown in Plat Cabinet A, Slide 1, of the Logan County Records of Plats.

Description prepared by:

  
Jeffrey I. Lee  
Professional Surveyor 6359  
January 12, 2000



ORIGINAL STAMP IN GREEN  
L-114

4720 2P

N:\Z\367\LOT144DSC.DSC.WPS

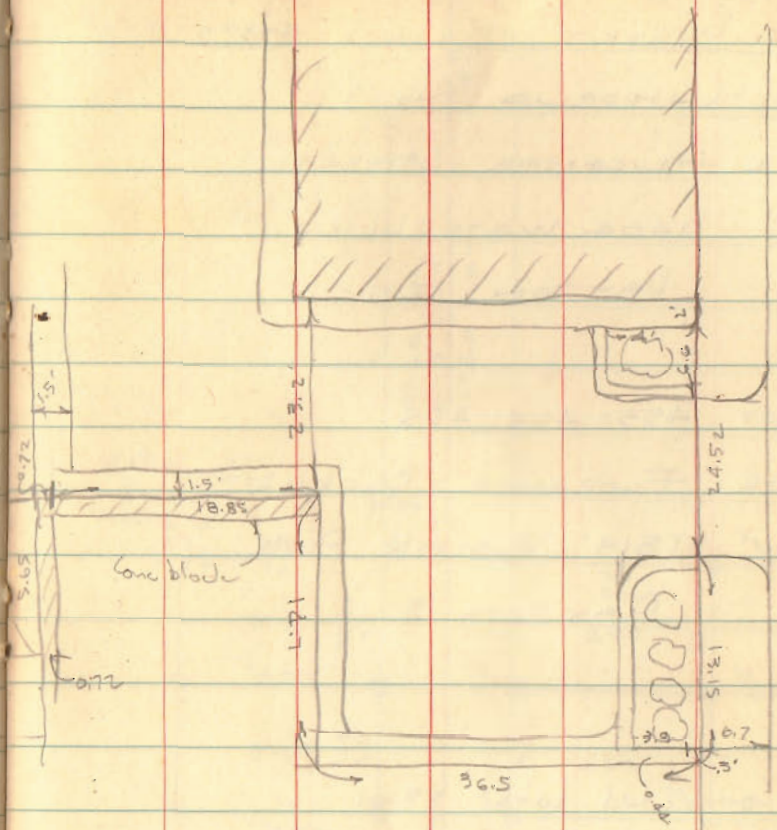


S. line bag @ alley 0+00  
 0+09.02 Face of wall 1 1/2'  
 0+43.85 Face of wall 1 1/2'  
 0+53.61 Face 8' Conc. Block wall  
 1+28.30 " " " " "  
 2+27.46 Cor. Hennessy Bldg @ walk

N. line Line  
 0+00 @ Alley  
 0+09.1 bag. walk - 7' walk  
 0+13.7 Fire hydr. on R  
 +41.45 F/F wall prod.  
 +53.3 F/F wall  
 1+13.92 F/F wall curb  
 1+22.5 St. Light @ curb  
 1+51.60 N.E. Cor bank  
 2+27.80 N.W " "

30  
 55

227.80  
 8.25  
 5  
 227.46  
 8.25  
 219.21



INDEXED ON MAP  
 4728