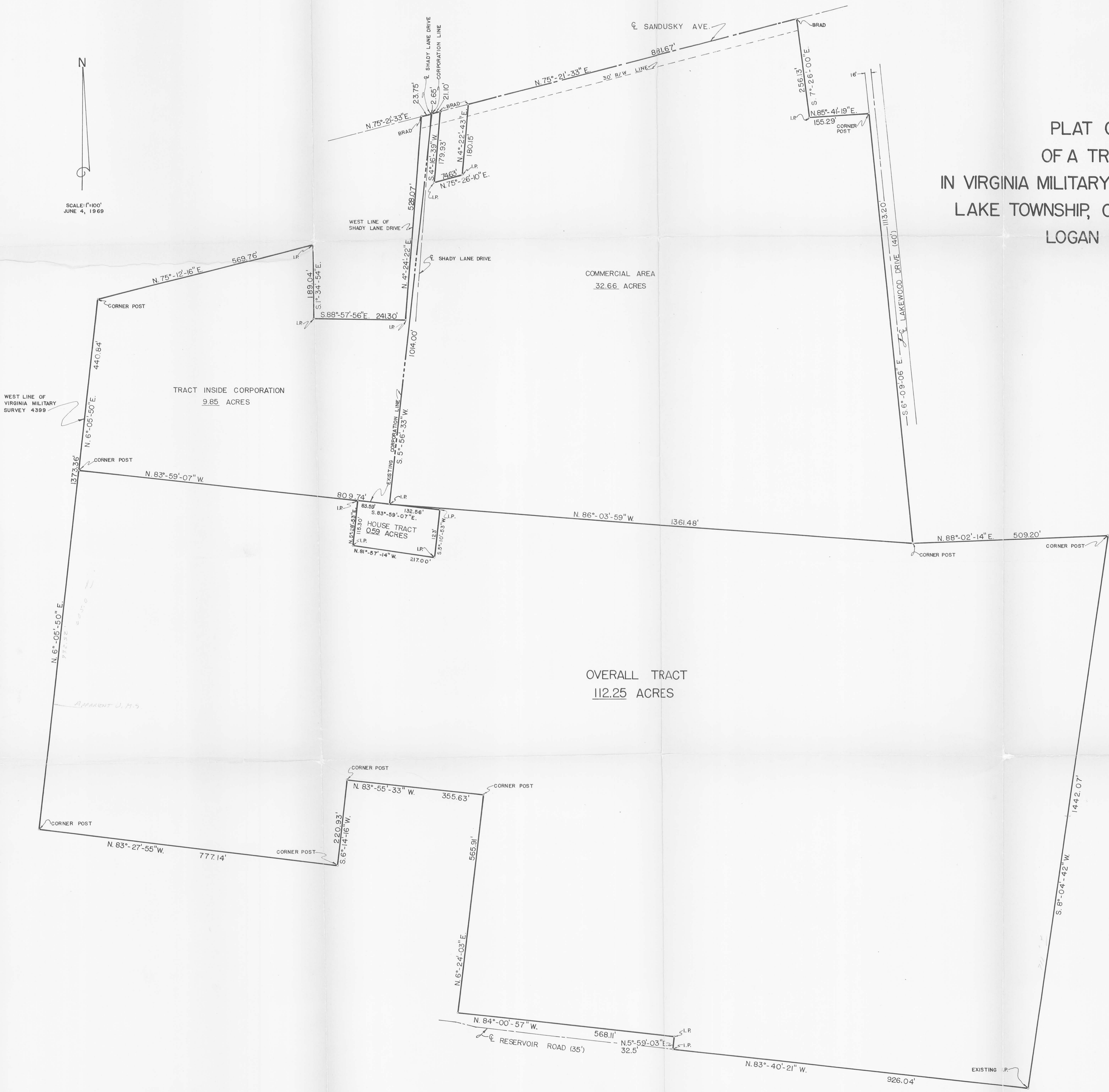


PLAT OF A SURVEY
 OF A TRACT OF LAND
 IN VIRGINIA MILITARY SURVEY 4399 & 4478,
 LAKE TOWNSHIP, CITY OF BELLEFONTAINE,
 LOGAN COUNTY, OHIO

N
 SCALE: 1"=100'
 JUNE 4, 1969



THOMAS L. SHELDON P.E.
 REG. ENGINEER # 32874
 REG. SURVEYOR # 4620

SHELDON ENGINEERING
 LIMA, OHIO

INDEXED ON MAP
 (109) IP