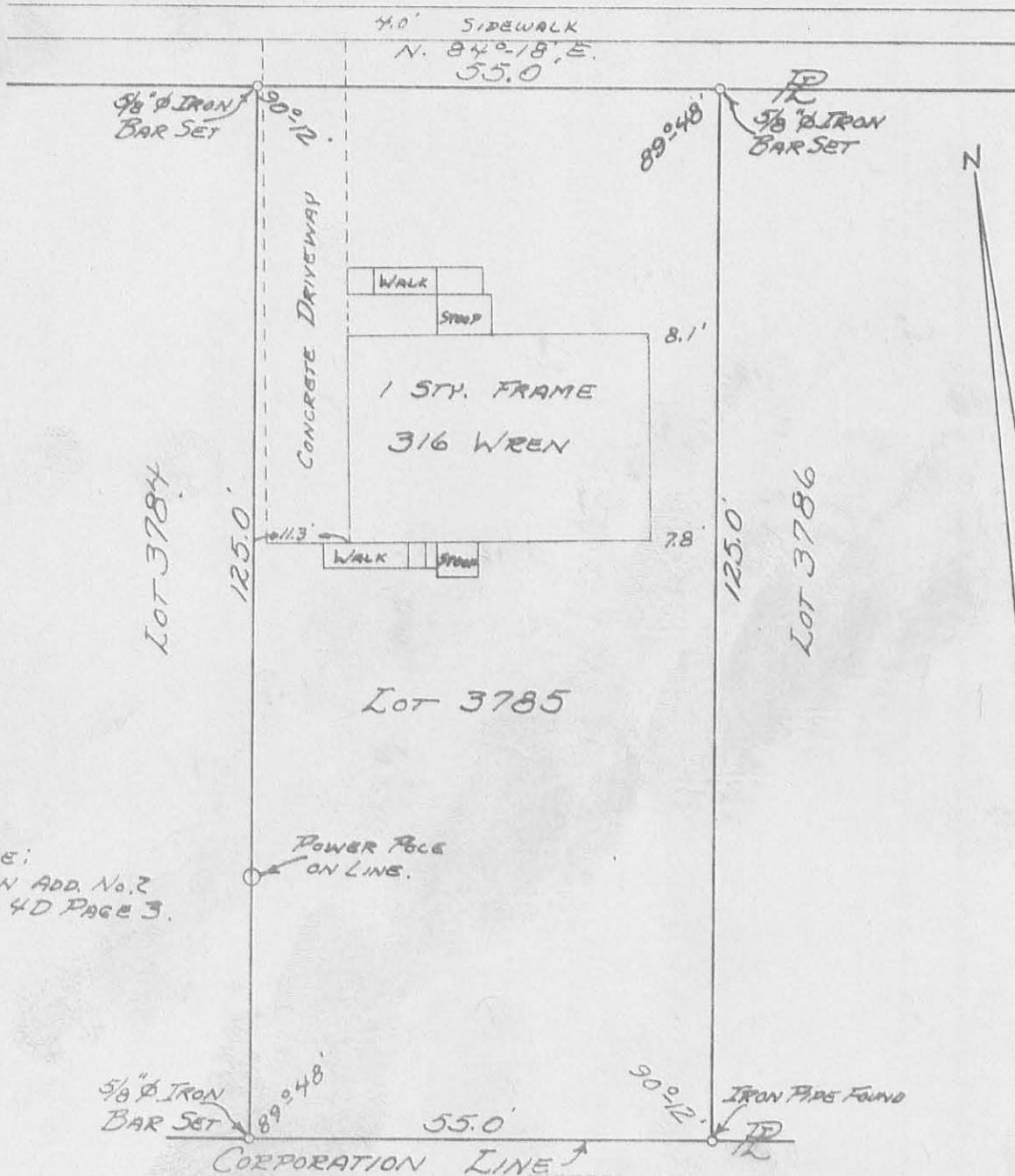


WREN AVE. - 50' R/W.



REFERENCE:  
SOUTHVIEW ADD. No. 2  
PLAT BOOK 4D PAGE 3.

POWER POLE  
ON LINE.

I HEREBY CERTIFY THAT THIS IS A TRUE  
AND ACCURATE SURVEY OF Lot No. 3785  
AND THAT THERE ARE NO VISIBLE EN-  
CROACHMENTS ON SAID LOT.

Daniel E. Gilbert, P.S.

SURVEYED AND PLATED BY:  
DANIEL E. GILBERT, P.S.  
REG. SUR. No. 5402  
428 N. MADRIVER ST.  
BELLEFONTAINE, OHIO 43311



INDEXED ON MAP

4608 IP

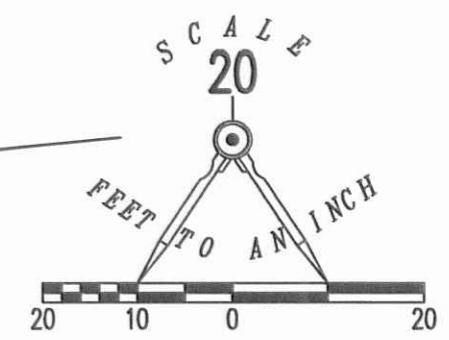
SURVEY OF Lot 3785  
SOUTHVIEW ADDITION No. 2  
SEC. 33 T. 4 R. 14  
CITY OF BELLEFONTAINE  
LAKE TOWNSHIP  
LOGAN COUNTY, OHIO  
NOVEMBER 22, 1969

SCALE: 1" = 20'

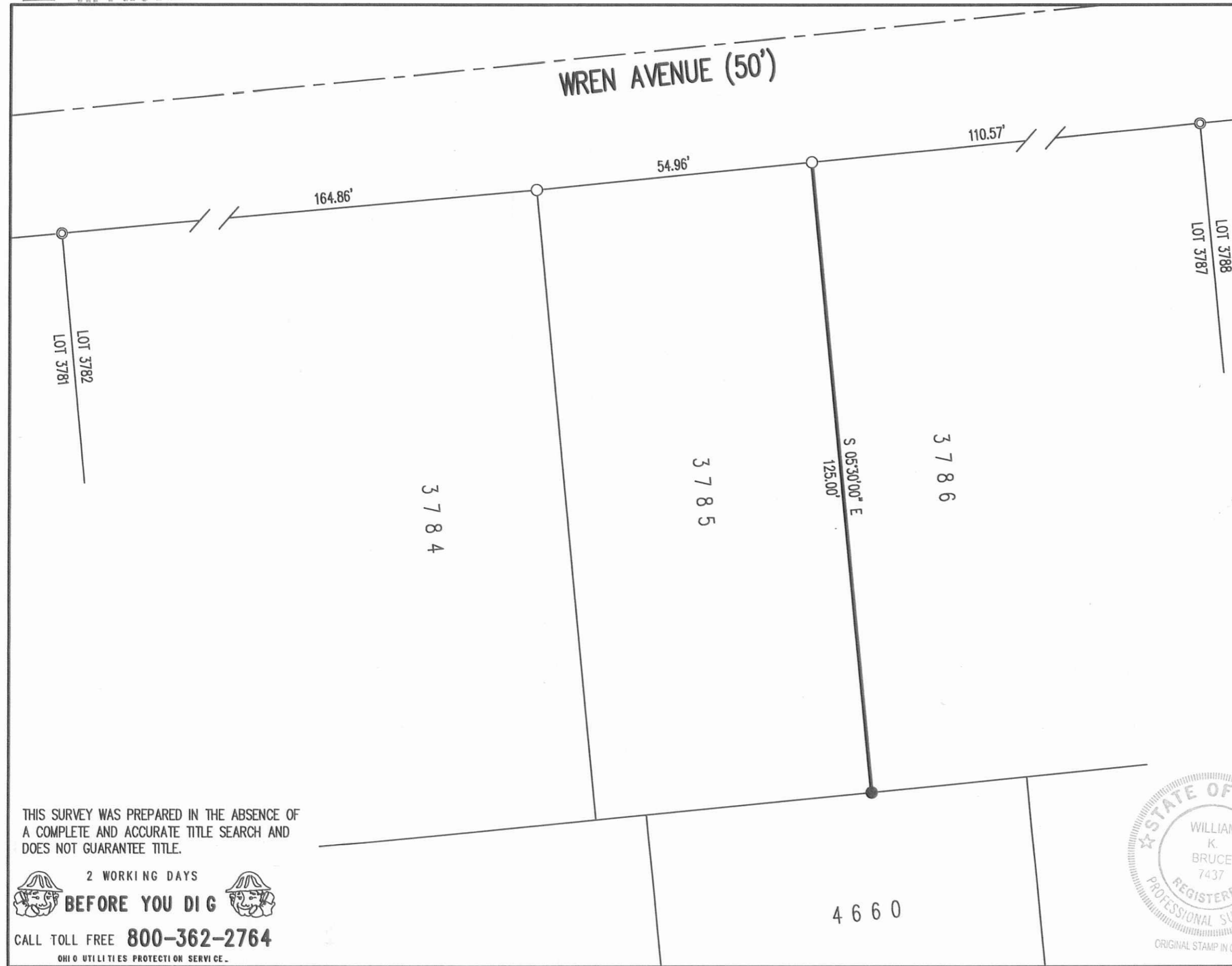
8-16-14

APPROVED

WREN AVENUE (50')



- LEGEND:
- ⊙ 1/2 INCH IRON PIPE FOUND
  - 5/8 INCH IRON ROD FOUND
  - 5/8 INCH IRON ROD SET WITH PLASTIC I.D. CAP STAMPED :LSM 7437"



RETRACEMENT SURVEY OF  
THE EAST LINE OF LOT 3785  
SOUTHVIEW ADDITION NO. 2  
PLAT CABINET A, SLIDE 313  
CITY OF BELLEFONTAINE  
LAKE TOWNSHIP  
LOGAN COUNTY, OHIO

SURVEYED BY:  
*William K. Bruce*

WILLIAM K. BRUCE  
PROFESSIONAL SURVEYOR 7437  
AUGUST 5, 2016



COPYRIGHT 2016 BY:  
**LEE SURVEYING & MAPPING CO., INC.**  
117 North Madriver Street  
BELLEFONTAINE, OHIO 43311  
(937) 593-7335  
WWW.LSMINC.US  
surveys@lsminc.us  
KSS D0716 61450716 L-6145-3

THIS SURVEY WAS PREPARED IN THE ABSENCE OF  
A COMPLETE AND ACCURATE TITLE SEARCH AND  
DOES NOT GUARANTEE TITLE.



CALL TOLL FREE **800-362-2764**  
OHIO UTILITIES PROTECTION SERVICE

INDEXED ON MAP  
*4600 2P*