

INDEXED ON MAP  
4177 1P

REFERENCES:  
VOL. 1 BOOK A PAGE 24  
M<sup>c</sup>CRACKIN REVISED ADD.  
DEED VOL. 312 PAGE 588  
50' OFF S. END OF LOTS  
1462-1463



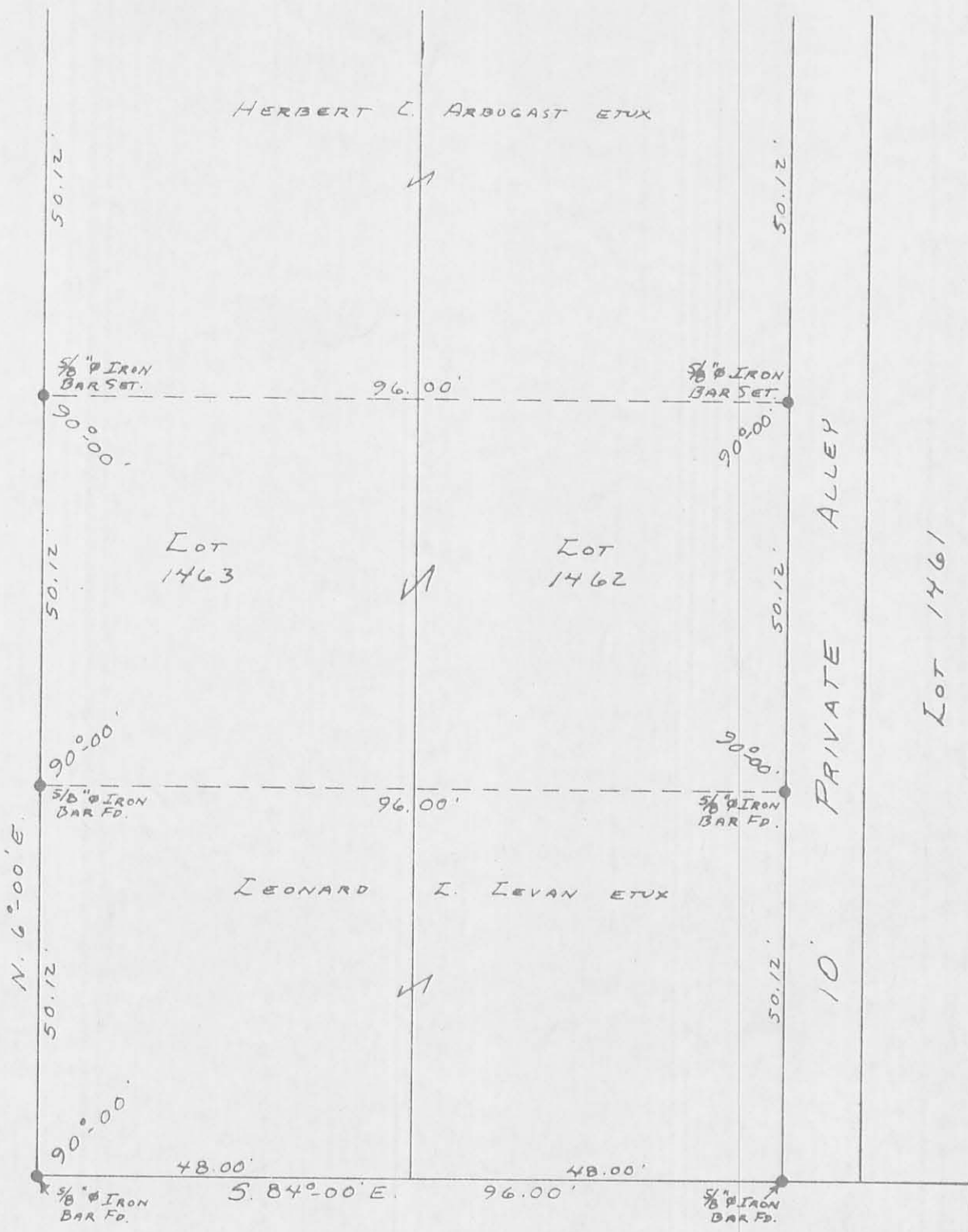
SURVEY OF PT. LOTS 1462-1463  
M<sup>c</sup>CRACKIN REVISED ADDITION  
SECTION 35 T. 4 R. 14  
CITY OF BELLEFONTAINE  
LAKE TOWNSHIP  
LOGAN COUNTY, OHIO  
DECEMBER 23, 1967

SURVEYED AND PLATTED BY:  
DANIEL E. GILBERT  
REG. SUR. No. 5402

SCALE: 1" = 40'



EUCLID ST. - 60'



N. 62°00' E.

50.12'

50.12'

50.12'

50.12'

50.12'

50.12'

50.12'

50.12'

96.00'

96.00'

96.00'

LOT 1463

LOT 1462

LEONARD I. LEVAN ETUX

HERBERT C. ARBUGAST ETUX

10' PRIVATE ALLEY

LOT 1461

48.00'

48.00'

S. 84°00' E.

INDEXED ON MAP  
4177 2P

FLORENCE AVE. - 60'

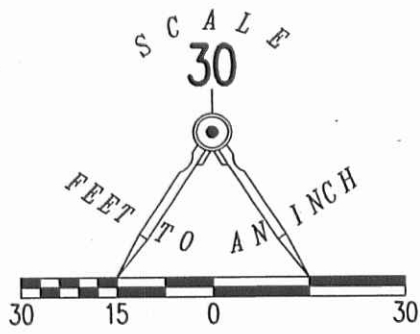
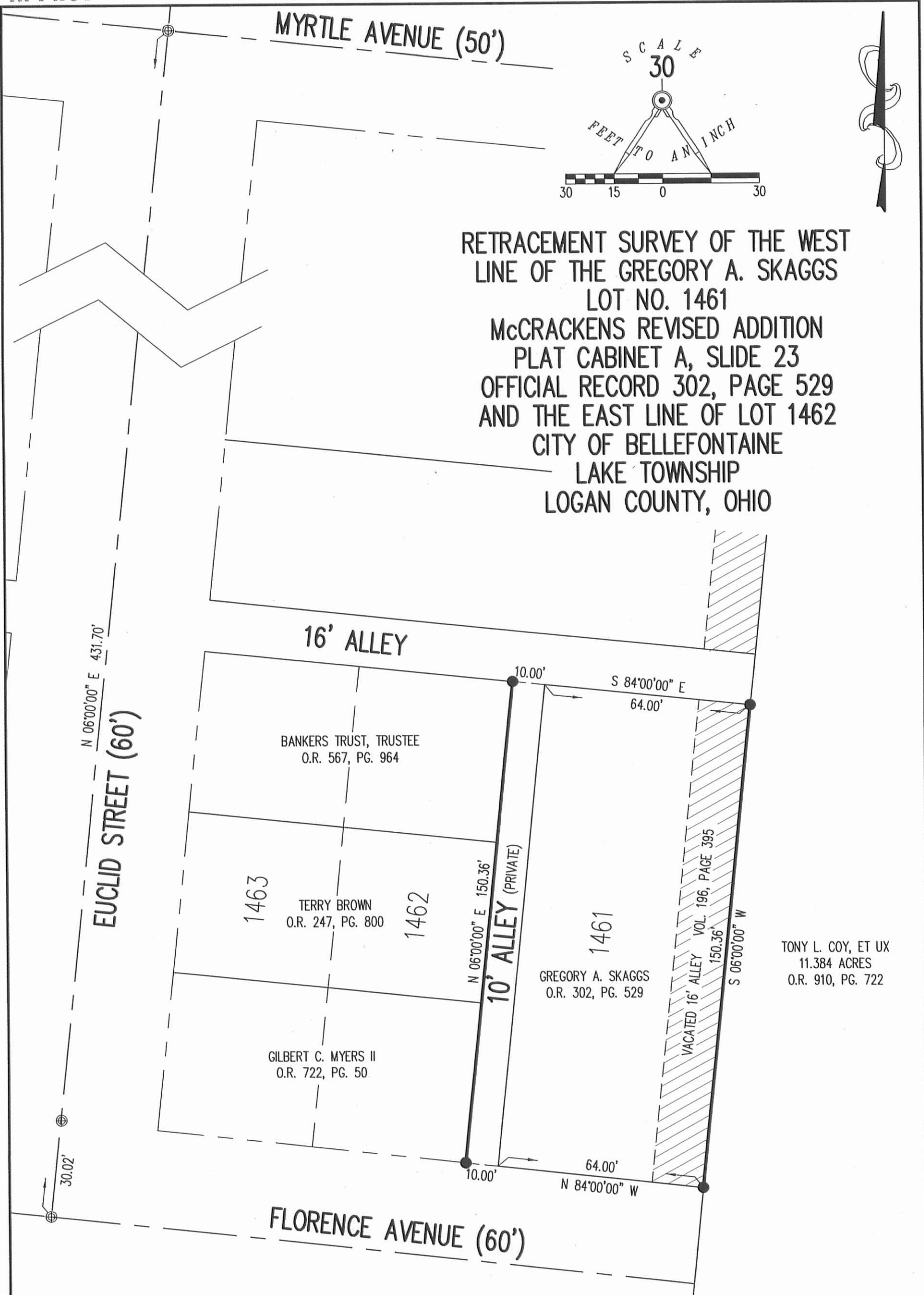
SURVEYED AND PLATED BY:  
DANIEL E. GILBERT, P.S.  
REG. SUR. NO. 5402  
1041 N. MAIN ST.  
BELLEFONTAINE, OHIO 43311



BREWER SURVEY  
CENTER PART LOTS 1462-1463  
M.S. CRACKIN REVISED ADDITION  
CITY OF BELLEFONTAINE  
LAKE TOWNSHIP  
LOGAN COUNTY, OHIO  
FEBRUARY 27, 1974  
SCALE: 1" = 20'

6-24-14

**APPROVED**



RETRACEMENT SURVEY OF THE WEST  
LINE OF THE GREGORY A. SKAGGS  
LOT NO. 1461  
McCRACKENS REVISED ADDITION  
PLAT CABINET A, SLIDE 23  
OFFICIAL RECORD 302, PAGE 529  
AND THE EAST LINE OF LOT 1462  
CITY OF BELLEFONTAINE  
LAKE TOWNSHIP  
LOGAN COUNTY, OHIO

SURVEYED BY:

*William K. Bruce*

WILLIAM K. BRUCE  
PROFESSIONAL SURVEYOR 7437  
JUNE 9, 2014

COPYRIGHT 2014 BY:  
**LEE SURVEYING & MAPPING CO., INC.**  
117 North Madriver Street  
BELLEFONTAINE, OHIO 43311  
(937) 593-7335  
WWW.LSMINC.US  
surveys@lsminc.us



ORIGINAL STAMP IN GREEN

LEGEND:

- ⊕ 1/2 INCH IRON BOLT FOUND
- 5/8 INCH IRON ROD SET WITH PLASTIC I.D. CAP STAMPED "LSM 7437"



CALL TOLL FREE **800-362-2764**

OHIO UTILITIES PROTECTION SERVICE

INDEXED ON MAP  
4177 3P

KSS D0514 53550514 L-5355-3